



**Australian Government**  
**Department of Veterans' Affairs**

# **TREATMENT POPULATION STATISTICS**

**QUARTERLY REPORT - DECEMBER 2015**  
**DATA EXTRACT AS AT 01 JANUARY 2016**

**DEPARTMENT OF VETERANS' AFFAIRS  
TRANSPORT, RESEARCH AND DEVELOPMENT  
STATISTICAL SERVICES & NOMINAL ROLLS  
CANBERRA**

## SUMMARY TREND

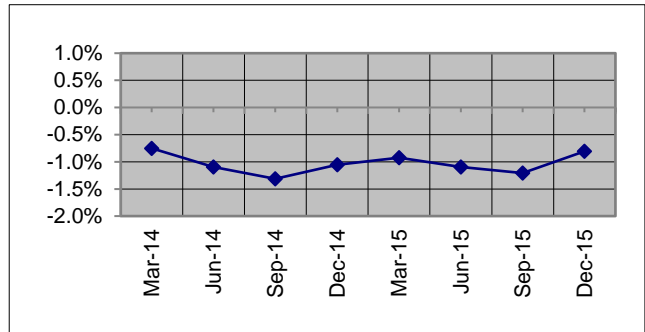
### TREATMENT POPULATION STATISTICS

#### TREATMENT POPULATION BY QUARTER

TABLE: TOTAL AND % CHANGE BY QUARTER

Quarter	Tpop	% Change
Dec-13	221,635	
Mar-14	219,970	-0.75%
Jun-14	217,562	-1.09%
Sep-14	214,705	-1.31%
Dec-14	212,447	-1.05%
Mar-15	210,487	-0.92%
Jun-15	208,181	-1.10%
Sep-15	205,667	-1.21%
Dec-15	204,008	-0.81%

CHART: PERCENT CHANGE

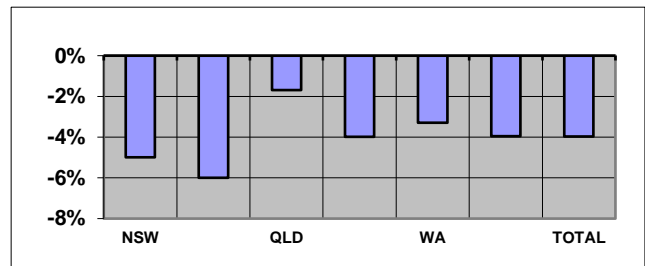


#### TREATMENT POPULATION BY STATE: DEC 14 and DEC 15

TABLE: TOTAL AND % CHANGE

	Dec-14	Dec-15	% Change
NSW	69,143	65,697	-4.98%
VIC	42,110	39,584	-6.00%
QLD	56,435	55,477	-1.70%
SA	17,565	16,866	-3.98%
WA	19,667	19,020	-3.29%
TAS	6,545	6,286	-3.96%
TOTAL	212,447	204,008	-3.97%

CHART: PERCENT CHANGE



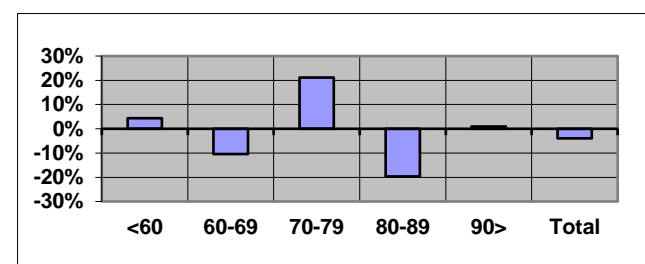
Overseas residents included in total but not reported. ACT and NT included within NSW and SA respectively.

#### TREATMENT POPULATION BY AGE GROUP: DEC 14 and DEC 15

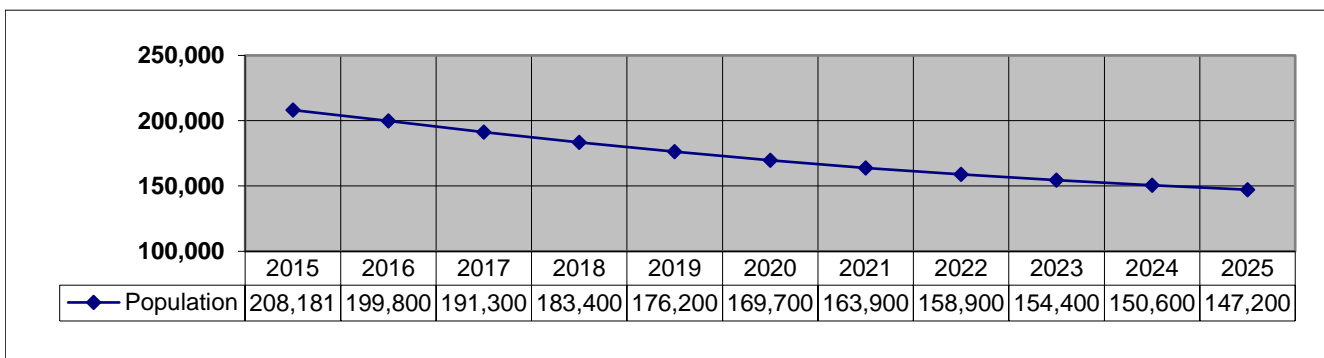
TABLE: TOTAL AND % CHANGE

	Dec-14	Dec-15	% Change
<60	38,179	39,836	4.34%
60-69	45,913	41,149	-10.38%
70-79	25,073	30,371	21.13%
80-89	56,311	45,256	-19.63%
90>	46,967	47,393	0.91%
Total	212,447	204,008	-3.97%

CHART: PERCENT CHANGE



#### TREATMENT POPULATION PROJECTIONS AS AT 31 DECEMBER



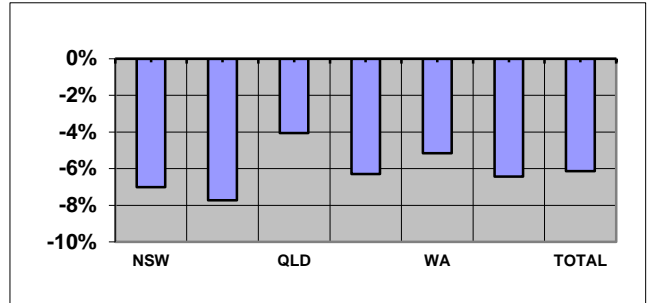
**SUMMARY TREND (Continuation)**  
**TREATMENT POPULATION STATISTICS**

**NUMBER OF GOLD CARDS BY STATE: DEC 14 and DEC 15**

**TABLE: TOTAL AND % CHANGE**

	<b>Dec-14</b>	<b>Dec-15</b>	<b>% Change</b>
<b>NSW</b>	53,422	49,680	-7.00%
<b>VIC</b>	33,124	30,567	-7.72%
<b>QLD</b>	39,094	37,506	-4.06%
<b>SA</b>	12,931	12,117	-6.29%
<b>WA</b>	13,706	13,000	-5.15%
<b>TAS</b>	5,058	4,733	-6.43%
<b>TOTAL</b>	157,884	148,188	-6.14%

**CHART: PERCENT CHANGE**

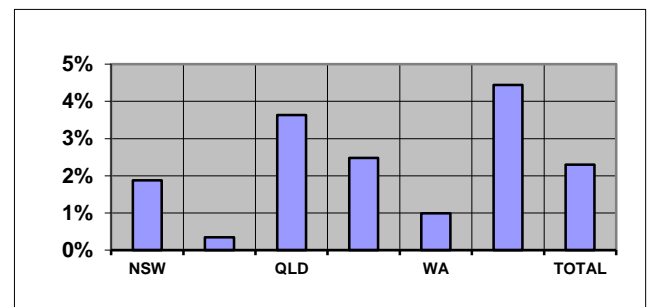


**NUMBER OF WHITE CARDS BY STATE: DEC 14 and DEC 15**

**TABLE: TOTAL AND % CHANGE**

	<b>Dec-14</b>	<b>Dec-15</b>	<b>% Change</b>
<b>NSW</b>	15,721	16,017	1.88%
<b>VIC</b>	8,986	9,017	0.34%
<b>QLD</b>	17,341	17,971	3.63%
<b>SA</b>	4,634	4,749	2.48%
<b>WA</b>	5,961	6,020	0.99%
<b>TAS</b>	1,487	1,553	4.44%
<b>TOTAL</b>	54,563	55,820	2.30%

**CHART: PERCENT CHANGE**

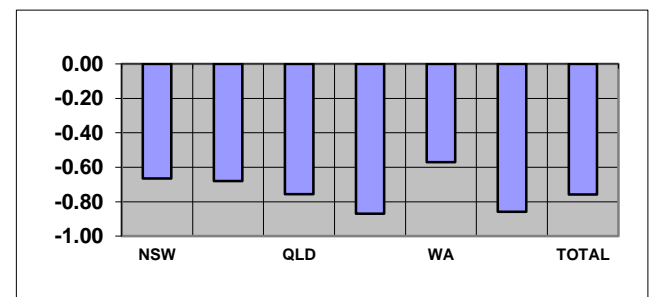


**AVERAGE AGE BY STATE: DEC 14 and DEC 15**

**TABLE: AVERAGE AGE CHANGE**

	<b>Dec-14</b>	<b>Dec-15</b>	<b>Yrs Change</b>
<b>NSW</b>	76.49	75.83	-0.66
<b>VIC</b>	77.72	77.04	-0.68
<b>QLD</b>	70.62	69.87	-0.76
<b>SA</b>	74.43	73.56	-0.87
<b>WA</b>	72.29	71.72	-0.57
<b>TAS</b>	74.33	73.47	-0.86
<b>TOTAL</b>	74.50	73.74	-0.76

**CHART: AVERAGE AGE CHANGE**

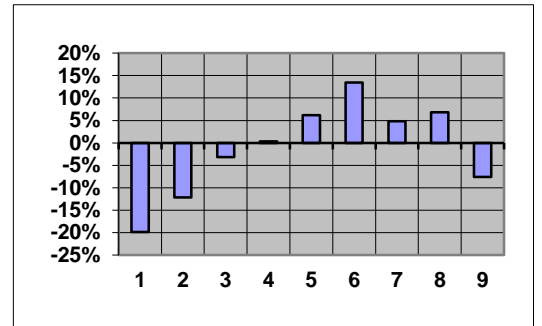


*Overseas residents included in total but not reported. ACT and NT included within NSW and SA respectively.*

**TABLE: TREATMENT POPULATION BY CONFLICT (TOTAL)**

<b>Conflict</b>	<b>Dec-14</b>	<b>Dec-15</b>	<b>% Change</b>
1. First World War	141	113	-19.86%
2. Second World War	98,339	86,340	-12.20%
3. Korea, Malaya & FESR	19,581	18,964	-3.15%
4. Vietnam	46,826	46,982	0.33%
5. Gulf War	1,021	1,084	6.17%
6. East Timor, Afghanistan & Iraq	7,964	9,037	13.47%
7. Peacekeeping & Other Operations	4,006	4,200	4.84%
8. No Operational Service	41,853	44,712	6.83%
9. British Commonwealth & Allied	4,174	3,856	-7.62%

**CHART: PERCENT CHANGE**



Note 1: Unknown numbers are not included in Summary Tables.

<b>CONTENTS</b>	<b>PAGE No</b>
<b>NOTES</b>	2
<b>GRAPH</b>	
1. Treatment population by state and sex	3
2. Treatment population by state and age group	4
3. Treatment population by state	5
4. Treatment population by single age trend from January 2010 to January 2025	6
5. Treatment population by state and card holder	7
<b>TABLE</b>	
1. Treatment population by state and age group	8
2. Treatment population by state, card and age group	9
3. Average age of the treatment population by card and state	10
4. Treatment population by state, sex and age group - Gold & White Card Group	11
4. Treatment population by state, sex and age group - Gold Card Group	12
4. Treatment population by state, sex and age group - White Card Group	13
5. Treatment population by Act, card, sex and age group	14
6. Treatment Population by conflict, card and sex	15
7. Prisoners of War, by POW country and state	16
8. DVA treatment population compared with Australian population by age group over 64 and sex	17
9. Treatment population trends - actual and projections as at 31 December	18
9. Treatment population trends - actual and projections as at 31 December (Continuation)	19

## **NOTES**

### **Definition**

The "treatment population" consists of veterans and dependants who have been issued a Gold or White card entitling them to medical and other treatment at Department expense under the Veterans' Entitlement Act, the Social Security and Veterans' Entitlements Amendment (No2) Act 1987, the Veterans' Entitlement (Transitional Provisions and Consequential Amendments) Act 1986, the Military Rehabilitation and Compensation Act 2004 and the Safety Rehabilitation and Compensation Act 1988.

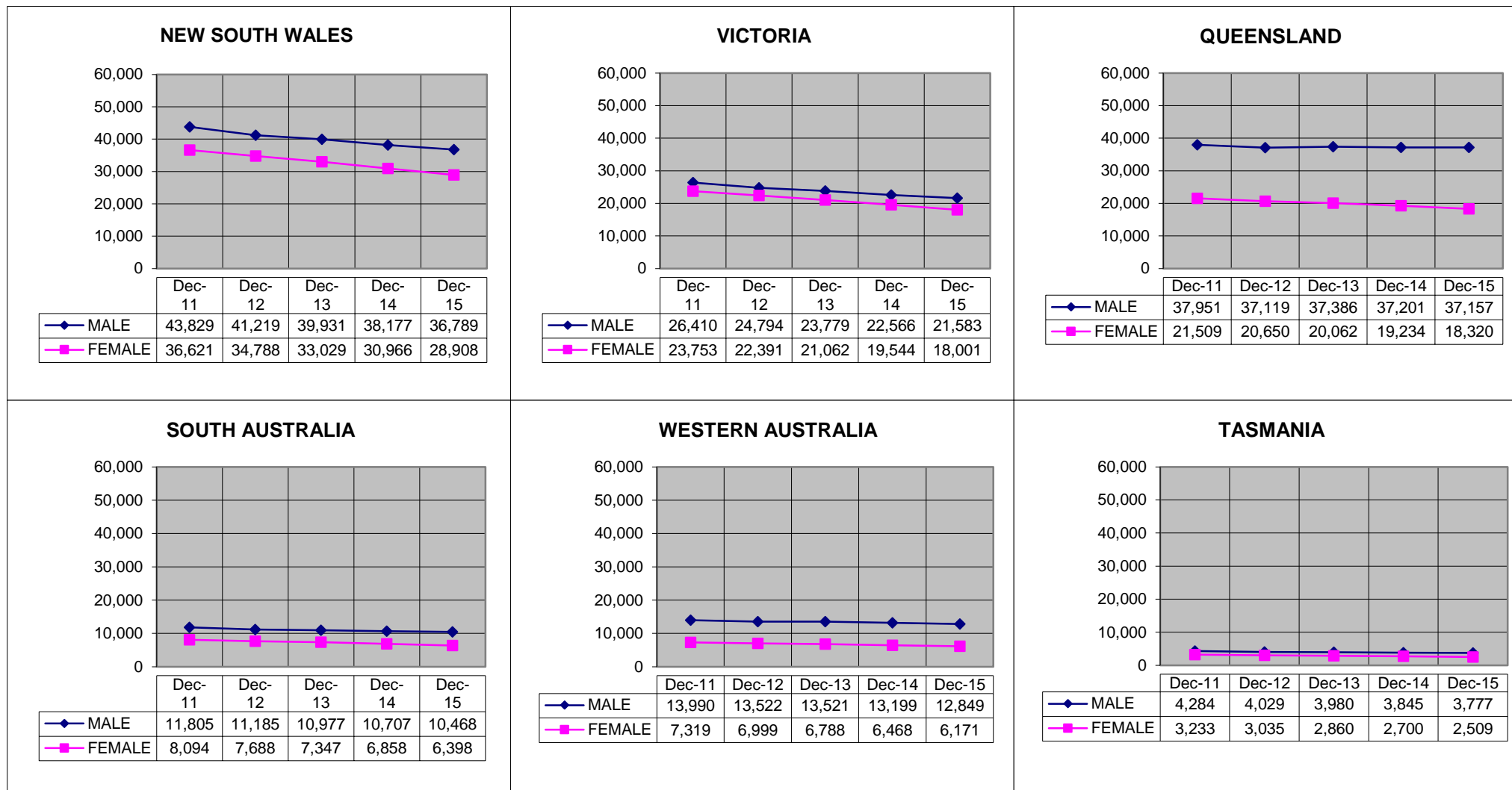
### **Revisions**

From September 2013 table 5 reports card holders by the legislation under which treatment expenses are paid.

Considerable changes have been made to table 6 and so it is no longer comparable to historical reports. Prior to September 2013, table 6 grouped clients by conflict using DVA file number. This resulted in veterans from recent conflicts being counted in a single group (Defence/Peace Keeping). From September 2013, clients are now counted under each conflict or operation in which they are known to have served. This change has made it possible to report figures for conflicts such as East Timor, Afghanistan and Iraq. Merchant mariners from the second world war are now included in the count of all former servicemen and women from World War II. Veterans from the Far East Strategic Reserve (FESR) are now included with those who served in Korea or Malaya.

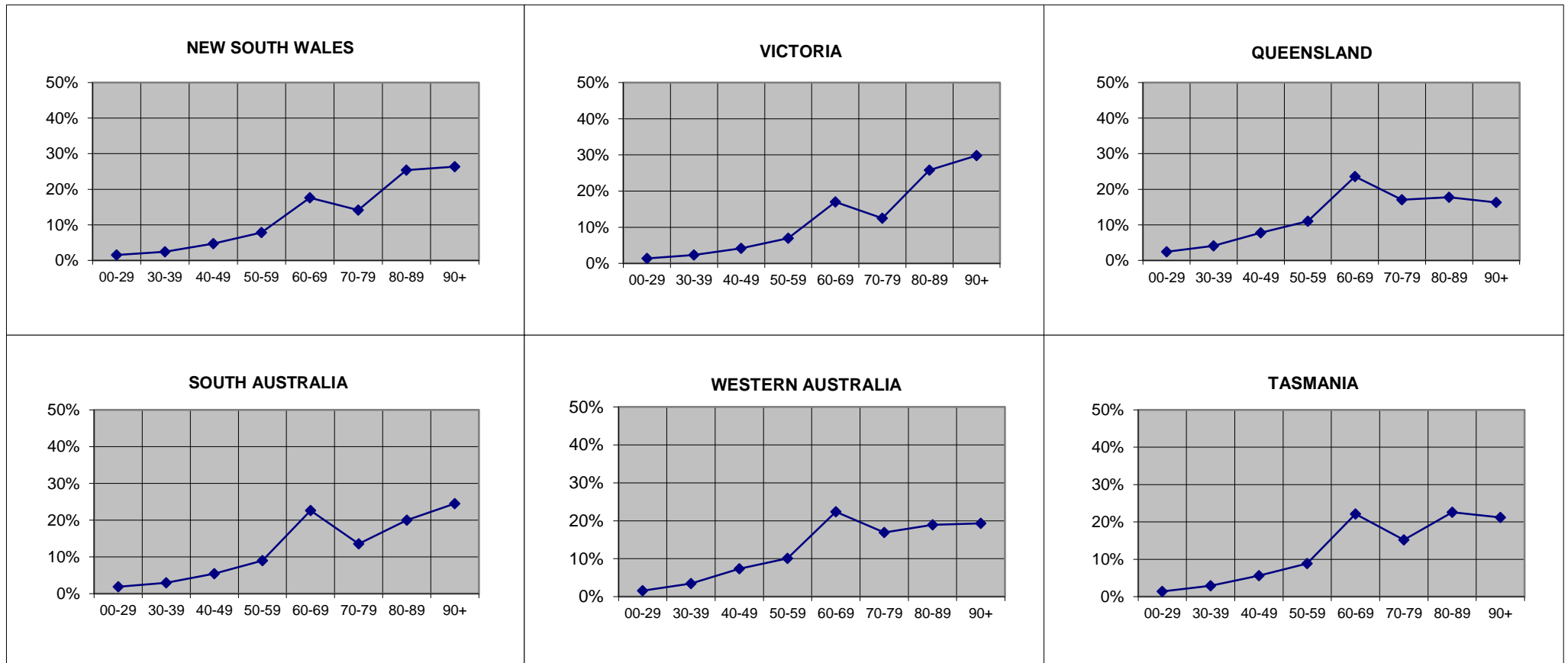
Veterans with service in more than one of the specified conflict groups are counted under each relevant conflict. For this reason, individual conflicts can not be summed. Net totals for multiple conflicts can be requested by emailing 'stats@dva.gov.au'.

**GRAPH 1: TREATMENT POPULATION BY STATE AND SEX FROM DECEMBER 2011 - DECEMBER 2015**



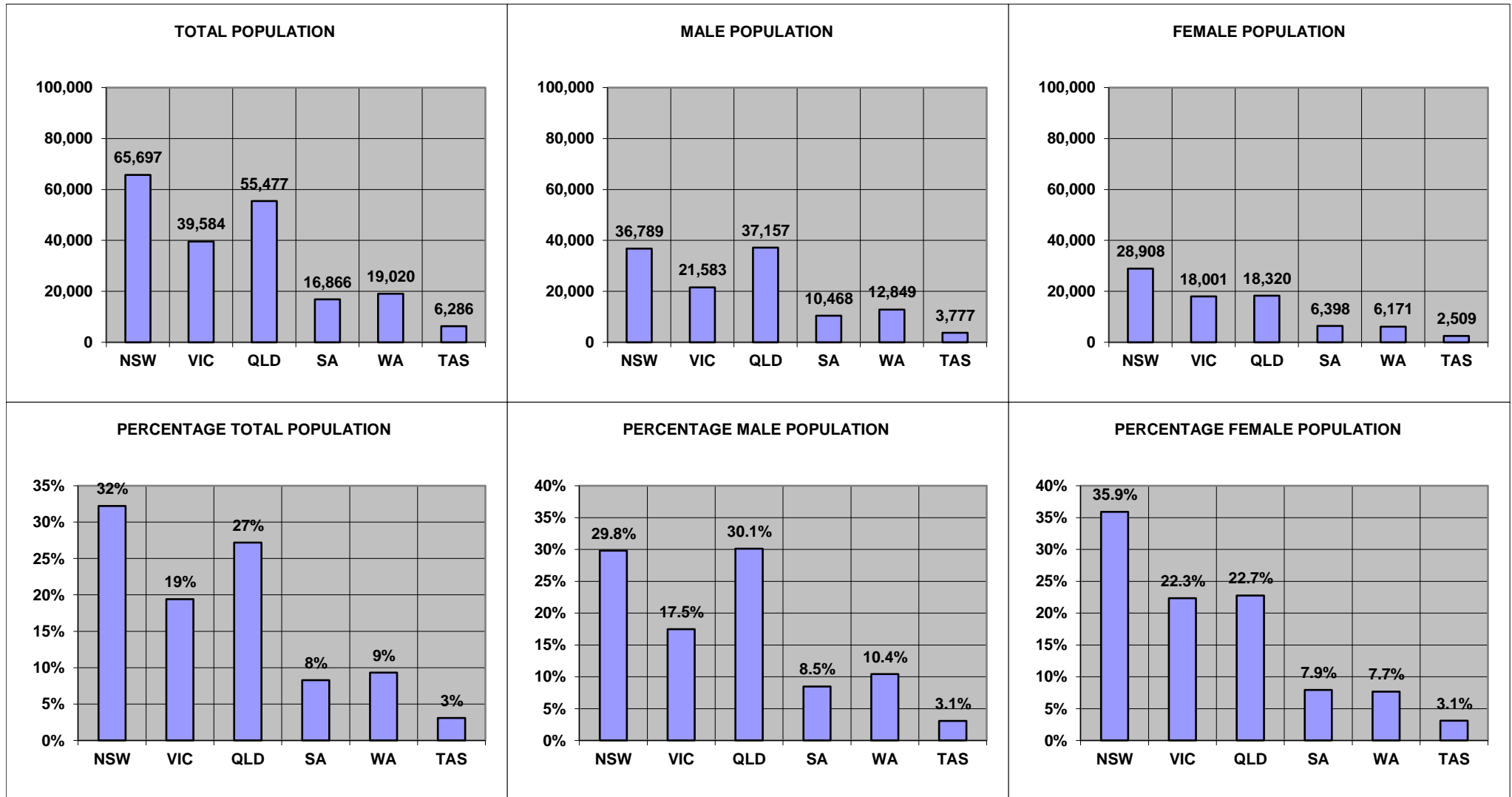
Overseas residents not reported. ACT and NT included within NSW and SA respectively.

**GRAPH 2: TREATMENT POPULATION BY STATE AND AGE GROUP, AS AT 01 JANUARY 2016**



Overseas residents not reported. ACT and NT included within NSW and SA respectively.

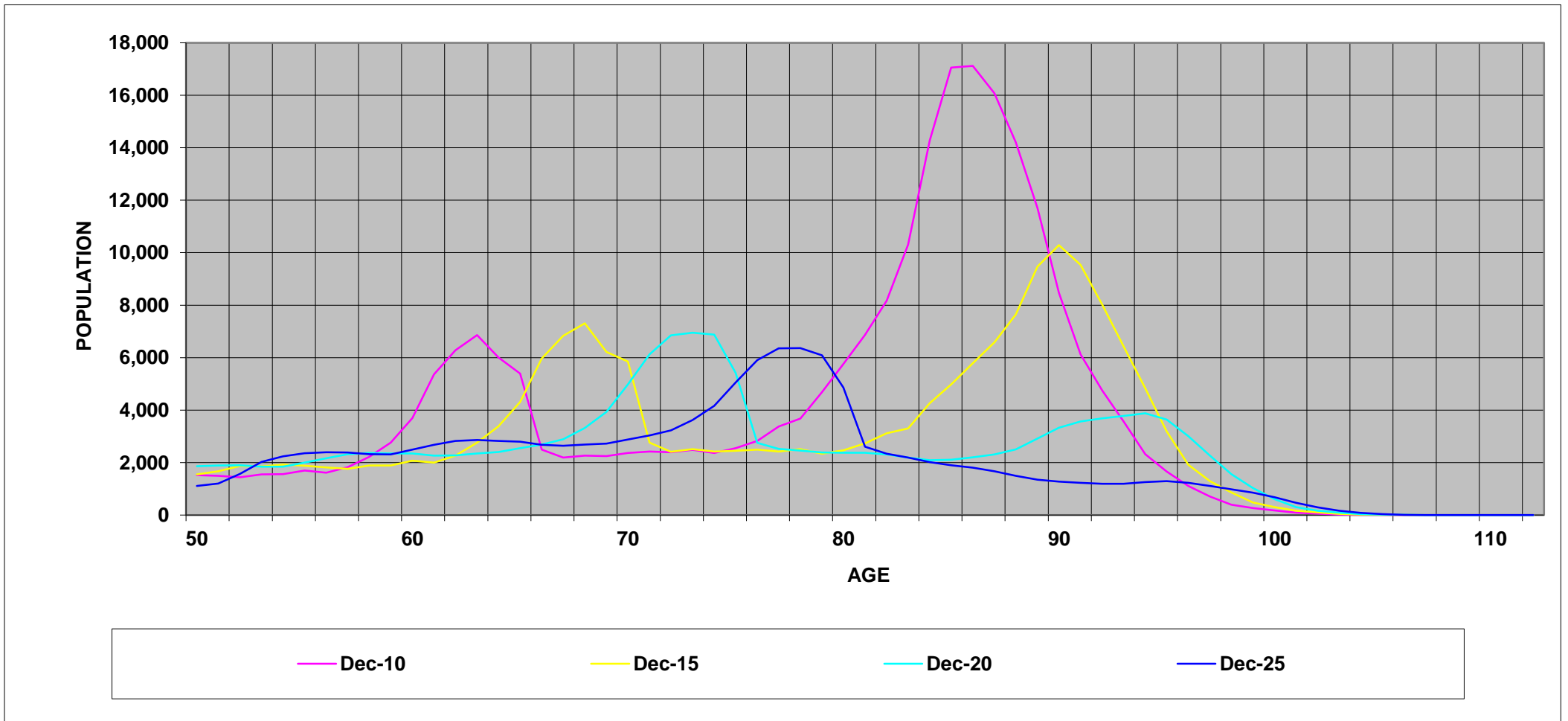
**GRAPH 3: TREATMENT POPULATION BY STATE AND SEX, AS AT 01 JANUARY 2016**



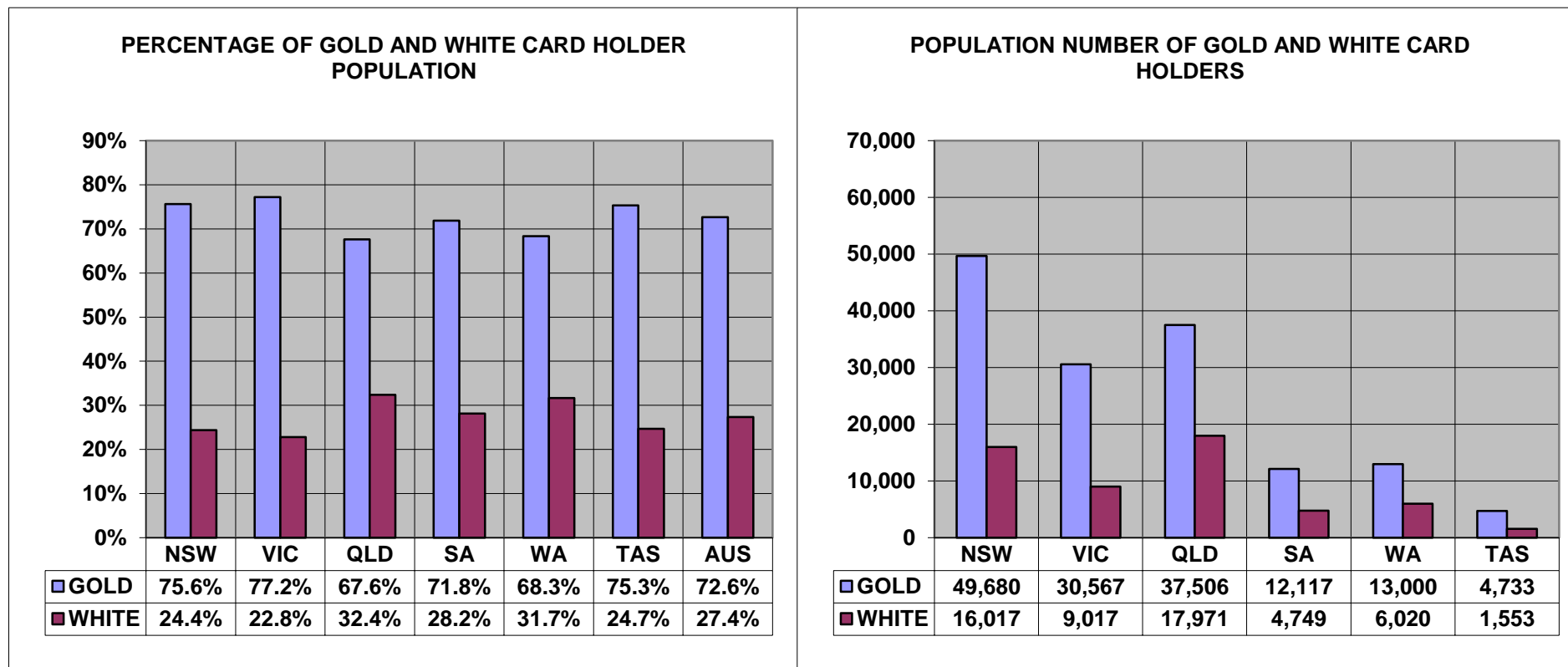
Overseas residents not reported. ACT and NT included within NSW and SA respectively.



**GRAPH 4: TOTAL TREATMENT POPULATION BY AGE TREND FROM DECEMBER 2010 TO DECEMBER 2025  
DATA AS AT JANUARY 2016**



**GRAPH 5: TREATMENT POPULATION BY STATE AND CARD HOLDER, AS AT 01 JANUARY 2016**



Overseas residents not reported. ACT and NT included within NSW and SA respectively.

**TABLE 1 : TREATMENT POPULATION BY STATE AND AGE GROUP, AS AT 01 JANUARY 2016**

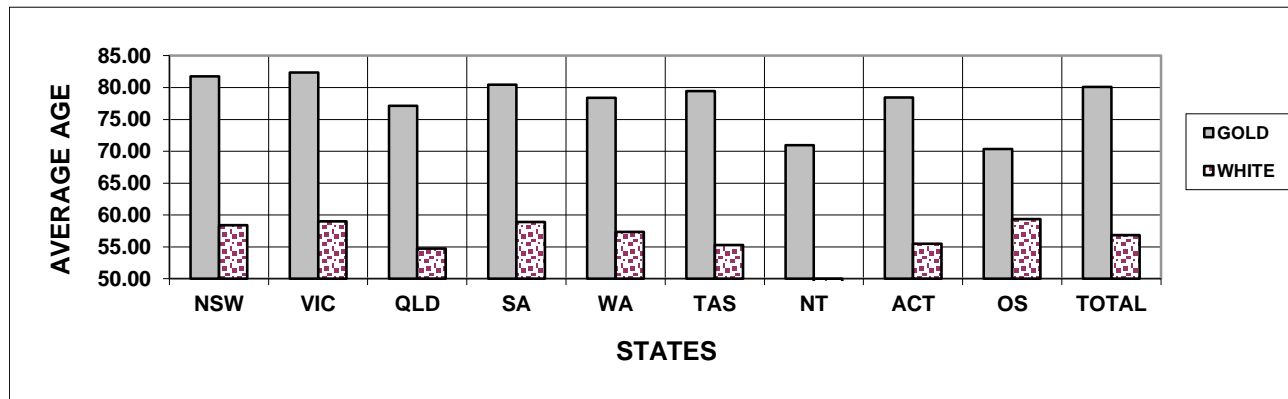
	<b>UNDER 30</b>	<b>30-39</b>	<b>40-49</b>	<b>50-59</b>	<b>60-69</b>	<b>70-79</b>	<b>80-89</b>	<b>90 &amp; OVER</b>	<b>TOTAL</b>
<b>NEW SOUTH WALES</b>	860	1,357	2,572	4,268	10,522	8,358	15,821	16,658	<b>60,417</b>
	1.4%	2.2%	4.3%	7.1%	17.4%	13.8%	26.2%	27.6%	<b>100.0%</b>
<b>VICTORIA</b>	555	922	1,651	2,769	6,736	4,949	10,205	11,796	<b>39,584</b>
	1.4%	2.3%	4.2%	7.0%	17.0%	12.5%	25.8%	29.8%	<b>100.0%</b>
<b>QUEENSLAND</b>	1,330	2,258	4,295	6,132	13,085	9,469	9,870	9,037	<b>55,477</b>
	2.4%	4.1%	7.7%	11.1%	23.6%	17.1%	17.8%	16.3%	<b>100.0%</b>
<b>SOUTH AUSTRALIA</b>	239	350	679	1,230	3,496	2,128	3,303	4,090	<b>15,515</b>
	1.5%	2.3%	4.4%	7.9%	22.5%	13.7%	21.3%	26.4%	<b>100.0%</b>
<b>WESTERN AUSTRALIA</b>	295	659	1,405	1,919	4,253	3,221	3,596	3,672	<b>19,020</b>
	1.6%	3.5%	7.4%	10.1%	22.4%	16.9%	18.9%	19.3%	<b>100.0%</b>
<b>TASMANIA</b>	90	182	352	559	1,390	956	1,422	1,335	<b>6,286</b>
	1.4%	2.9%	5.6%	8.9%	22.1%	15.2%	22.6%	21.2%	<b>100.0%</b>
<b>NORTHERN TERRITORY</b>	83	152	234	286	317	162	75	42	<b>1,351</b>
	6.1%	11.3%	17.3%	21.2%	23.5%	12.0%	5.6%	3.1%	<b>100.0%</b>
<b>AUSTRALIAN CAPITAL TERRITORY</b>	133	230	510	904	1,057	923	866	657	<b>5,280</b>
	2.5%	4.4%	9.7%	17.1%	20.0%	17.5%	16.4%	12.4%	<b>100.0%</b>
<b>OVERSEAS</b>	20	47	118	191	293	205	98	106	<b>1,078</b>
	1.9%	4.4%	10.9%	17.7%	27.2%	19.0%	9.1%	9.8%	<b>100.0%</b>
<b>TOTAL</b>	<b>3,605</b>	<b>6,157</b>	<b>11,816</b>	<b>18,258</b>	<b>41,149</b>	<b>30,371</b>	<b>45,256</b>	<b>47,393</b>	<b>204,008</b>
	<b>1.8%</b>	<b>3.0%</b>	<b>5.8%</b>	<b>8.9%</b>	<b>20.2%</b>	<b>14.9%</b>	<b>22.2%</b>	<b>23.2%</b>	<b>100.0%</b>

**TABLE 2: TREATMENT POPULATION BY STATE, CARD AND AGE GROUP, AS AT 01 JANUARY 2016**

		UNDER 30	30-39	40-49	50-59	60-69	70-79	80-89	90 & OVER	TOTAL
<b>NEW SOUTH WALES</b>	<b>GOLD</b>	131	122	407	1,023	7,253	7,505	14,889	15,643	<b>46,973</b>
	<b>WHITE</b>	729	1,235	2,165	3,245	3,269	853	932	1,015	<b>13,444</b>
	<b>TOTAL</b>	<b>860</b>	<b>1,357</b>	<b>2,572</b>	<b>4,268</b>	<b>10,522</b>	<b>8,358</b>	<b>15,821</b>	<b>16,658</b>	<b>60,417</b>
<b>VICTORIA</b>	<b>GOLD</b>	67	84	261	642	4,564	4,426	9,518	11,005	<b>30,567</b>
	<b>WHITE</b>	488	838	1,390	2,127	2,172	523	687	791	<b>9,017</b>
	<b>TOTAL</b>	<b>555</b>	<b>922</b>	<b>1,651</b>	<b>2,769</b>	<b>6,736</b>	<b>4,949</b>	<b>10,205</b>	<b>11,796</b>	<b>39,584</b>
<b>QUEENSLAND</b>	<b>GOLD</b>	197	255	777	1,587	8,692	8,400	9,163	8,435	<b>37,506</b>
	<b>WHITE</b>	1,133	2,003	3,518	4,545	4,393	1,069	707	602	<b>17,971</b>
	<b>TOTAL</b>	<b>1,330</b>	<b>2,258</b>	<b>4,295</b>	<b>6,132</b>	<b>13,085</b>	<b>9,469</b>	<b>9,870</b>	<b>9,037</b>	<b>55,477</b>
<b>SOUTH AUSTRALIA</b>	<b>GOLD</b>	26	17	108	294	2,527	1,876	2,980	3,813	<b>11,641</b>
	<b>WHITE</b>	213	333	571	936	969	252	323	277	<b>3,874</b>
	<b>TOTAL</b>	<b>239</b>	<b>350</b>	<b>679</b>	<b>1,230</b>	<b>3,496</b>	<b>2,128</b>	<b>3,303</b>	<b>4,090</b>	<b>15,515</b>
<b>WESTERN AUSTRALIA</b>	<b>GOLD</b>	35	40	212	482	2,948	2,749	3,163	3,371	<b>13,000</b>
	<b>WHITE</b>	260	619	1,193	1,437	1,305	472	433	301	<b>6,020</b>
	<b>TOTAL</b>	<b>295</b>	<b>659</b>	<b>1,405</b>	<b>1,919</b>	<b>4,253</b>	<b>3,221</b>	<b>3,596</b>	<b>3,672</b>	<b>19,020</b>
<b>TASMANIA</b>	<b>GOLD</b>	9	13	60	154	1,004	851	1,356	1,286	<b>4,733</b>
	<b>WHITE</b>	81	169	292	405	386	105	66	49	<b>1,553</b>
	<b>TOTAL</b>	<b>90</b>	<b>182</b>	<b>352</b>	<b>559</b>	<b>1,390</b>	<b>956</b>	<b>1,422</b>	<b>1,335</b>	<b>6,286</b>
<b>NORTHERN TERRITORY</b>	<b>GOLD</b>	0	1	18	40	173	142	63	39	<b>476</b>
	<b>WHITE</b>	83	151	216	246	144	20	12	3	<b>875</b>
	<b>TOTAL</b>	<b>83</b>	<b>152</b>	<b>234</b>	<b>286</b>	<b>317</b>	<b>162</b>	<b>75</b>	<b>42</b>	<b>1,351</b>
<b>AUSTRALIAN CAPITAL TERRITORY</b>	<b>GOLD</b>	19	8	44	100	372	774	786	604	<b>2,707</b>
	<b>WHITE</b>	114	222	466	804	685	149	80	53	<b>2,573</b>
	<b>TOTAL</b>	<b>133</b>	<b>230</b>	<b>510</b>	<b>904</b>	<b>1,057</b>	<b>923</b>	<b>866</b>	<b>657</b>	<b>5,280</b>
<b>OVERSEAS</b>	<b>GOLD</b>	7	10	25	62	182	157	78	64	<b>585</b>
	<b>WHITE</b>	13	37	93	129	111	48	20	42	<b>493</b>
	<b>TOTAL</b>	<b>20</b>	<b>47</b>	<b>118</b>	<b>191</b>	<b>293</b>	<b>205</b>	<b>98</b>	<b>106</b>	<b>1,078</b>
<b>TOTAL</b>	<b>GOLD</b>	491	550	1,912	4,384	27,715	26,880	41,996	44,260	<b>148,188</b>
	<b>WHITE</b>	3,114	5,607	9,904	13,874	13,434	3,491	3,260	3,133	<b>55,820</b>
	<b>TOTAL</b>	<b>3,605</b>	<b>6,157</b>	<b>11,816</b>	<b>18,258</b>	<b>41,149</b>	<b>30,371</b>	<b>45,256</b>	<b>47,393</b>	<b>204,008</b>

**TABLE 3: AVERAGE AGE OF THE TREATMENT POPULATION BY CARD AND STATE, AS AT 01 JANUARY 2016**

CARD	NSW	VIC	QLD	SA	WA	TAS	NT	ACT	OS	TOTAL
<b>GOLD</b>	81.78	82.36	77.12	80.44	78.38	79.44	70.96	78.46	70.34	<b>80.10</b>
<b>WHITE</b>	58.38	59.02	54.74	58.90	57.34	55.28	48.37	55.47	59.37	<b>56.87</b>
<b>TOTAL</b>	<b>76.57</b>	<b>77.04</b>	<b>69.87</b>	<b>75.06</b>	<b>71.72</b>	<b>73.47</b>	<b>56.33</b>	<b>67.26</b>	<b>65.32</b>	<b>73.74</b>



**TABLE 4: TREATMENT POPULATION BY STATE, SEX AND AGE GROUP, AS AT 01 JANUARY 2016**  
**GOLD AND WHITE CARDS**

		UNDER 30	30-39	40-49	50-59	60-69	70-79	80-89	90 & OVER	TOTAL
NEW SOUTH WALES	MALE	656	1,137	2,138	3,660	9,092	5,757	3,862	6,714	33,017
	FEMALE	204	220	434	608	1,430	2,601	11,959	9,944	27,400
	<b>TOTAL</b>	<b>860</b>	<b>1,357</b>	<b>2,572</b>	<b>4,268</b>	<b>10,522</b>	<b>8,358</b>	<b>15,821</b>	<b>16,658</b>	<b>60,417</b>
VICTORIA	MALE	441	765	1,367	2,324	5,862	3,553	2,236	5,034	21,583
	FEMALE	114	157	284	445	874	1,396	7,969	6,762	18,001
	<b>TOTAL</b>	<b>555</b>	<b>922</b>	<b>1,651</b>	<b>2,769</b>	<b>6,736</b>	<b>4,949</b>	<b>10,205</b>	<b>11,796</b>	<b>39,584</b>
QUEENSLAND	MALE	1,029	1,862	3,555	5,286	11,483	7,207	2,951	3,783	37,157
	FEMALE	301	396	740	846	1,602	2,262	6,919	5,254	18,320
	<b>TOTAL</b>	<b>1,330</b>	<b>2,258</b>	<b>4,295</b>	<b>6,132</b>	<b>13,085</b>	<b>9,469</b>	<b>9,870</b>	<b>9,037</b>	<b>55,476</b>
SOUTH AUSTRALIA	MALE	196	294	555	1,049	3,070	1,633	840	1,716	9,353
	FEMALE	43	56	124	181	426	495	2,463	2,374	6,162
	<b>TOTAL</b>	<b>239</b>	<b>350</b>	<b>679</b>	<b>1,230</b>	<b>3,496</b>	<b>2,128</b>	<b>3,303</b>	<b>4,090</b>	<b>15,515</b>
WESTERN AUSTRALIA	MALE	218	512	1,161	1,671	3,792	2,534	1,294	1,667	12,849
	FEMALE	77	147	244	248	461	687	2,302	2,005	6,171
	<b>TOTAL</b>	<b>295</b>	<b>659</b>	<b>1,405</b>	<b>1,919</b>	<b>4,253</b>	<b>3,221</b>	<b>3,596</b>	<b>3,672</b>	<b>19,020</b>
TASMANIA	MALE	73	135	280	474	1,217	679	366	553	3,777
	FEMALE	17	47	72	85	173	277	1,056	782	2,509
	<b>TOTAL</b>	<b>90</b>	<b>182</b>	<b>352</b>	<b>559</b>	<b>1,390</b>	<b>956</b>	<b>1,422</b>	<b>1,335</b>	<b>6,286</b>
NORTHERN TERRITORY	MALE	68	125	199	255	281	126	37	24	1,115
	FEMALE	15	27	35	31	36	36	38	18	236
	<b>TOTAL</b>	<b>83</b>	<b>152</b>	<b>234</b>	<b>286</b>	<b>317</b>	<b>162</b>	<b>75</b>	<b>42</b>	<b>1,351</b>
AUSTRALIAN CAPITAL TERRITORY	MALE	99	167	379	742	942	752	386	305	3,772
	FEMALE	34	63	131	162	115	171	480	352	1,508
	<b>TOTAL</b>	<b>133</b>	<b>230</b>	<b>510</b>	<b>904</b>	<b>1,057</b>	<b>923</b>	<b>866</b>	<b>657</b>	<b>5,280</b>
OVERSEAS	MALE	13	36	88	154	261	161	43	70	826
	FEMALE	7	11	30	37	32	44	55	36	252
	<b>TOTAL</b>	<b>20</b>	<b>47</b>	<b>118</b>	<b>191</b>	<b>293</b>	<b>205</b>	<b>98</b>	<b>106</b>	<b>1,078</b>
<b>TOTAL</b>	MALE	2,793	5,033	9,722	15,615	36,000	22,402	12,015	19,866	123,449
	FEMALE	812	1,124	2,094	2,643	5,149	7,969	33,241	27,527	80,559
	<b>TOTAL</b>	<b>3,605</b>	<b>6,157</b>	<b>11,816</b>	<b>18,258</b>	<b>41,149</b>	<b>30,371</b>	<b>45,256</b>	<b>47,393</b>	<b>204,008</b>

**TABLE 4: TREATMENT POPULATION BY STATE, SEX AND AGE GROUP, AS AT 01 JANUARY 2016****GOLD CARD**

		<b>UNDER 30</b>	<b>30-39</b>	<b>40-49</b>	<b>50-59</b>	<b>60-69</b>	<b>70-79</b>	<b>80-89</b>	<b>90 &amp; OVER</b>	<b>TOTAL</b>
<b>NEW SOUTH WALES</b>	<b>MALE</b>	71	95	318	726	5,931	4,930	2,983	5,959	<b>21,013</b>
	<b>FEMALE</b>	60	27	89	297	1,322	2,575	11,906	9,684	<b>25,960</b>
	<b>TOTAL</b>	<b>131</b>	<b>122</b>	<b>407</b>	<b>1,023</b>	<b>7,253</b>	<b>7,505</b>	<b>14,889</b>	<b>15,643</b>	<b>46,973</b>
<b>VICTORIA</b>	<b>MALE</b>	33	73	213	436	3,765	3,042	1,582	4,395	<b>13,539</b>
	<b>FEMALE</b>	34	11	48	206	799	1,384	7,936	6,610	<b>17,028</b>
	<b>TOTAL</b>	<b>67</b>	<b>84</b>	<b>261</b>	<b>642</b>	<b>4,564</b>	<b>4,426</b>	<b>9,518</b>	<b>11,005</b>	<b>30,567</b>
<b>QUEENSLAND</b>	<b>MALE</b>	93	216	642	1,199	7,268	6,158	2,276	3,319	<b>21,171</b>
	<b>FEMALE</b>	104	39	135	388	1,424	2,242	6,887	5,116	<b>16,335</b>
	<b>TOTAL</b>	<b>197</b>	<b>255</b>	<b>777</b>	<b>1,587</b>	<b>8,692</b>	<b>8,400</b>	<b>9,163</b>	<b>8,435</b>	<b>37,506</b>
<b>SOUTH AUSTRALIA</b>	<b>MALE</b>	14	13	85	210	2,133	1,385	531	1,497	<b>5,868</b>
	<b>FEMALE</b>	12	4	23	84	394	491	2,449	2,316	<b>5,773</b>
	<b>TOTAL</b>	<b>26</b>	<b>17</b>	<b>108</b>	<b>294</b>	<b>2,527</b>	<b>1,876</b>	<b>2,980</b>	<b>3,813</b>	<b>11,641</b>
<b>WESTERN AUSTRALIA</b>	<b>MALE</b>	18	28	165	367	2,529	2,071	876	1,442	<b>7,496</b>
	<b>FEMALE</b>	17	12	47	115	419	678	2,287	1,929	<b>5,504</b>
	<b>TOTAL</b>	<b>35</b>	<b>40</b>	<b>212</b>	<b>482</b>	<b>2,948</b>	<b>2,749</b>	<b>3,163</b>	<b>3,371</b>	<b>13,000</b>
<b>TASMANIA</b>	<b>MALE</b>	4	9	52	119	851	577	304	516	<b>2,432</b>
	<b>FEMALE</b>	5	4	8	35	153	274	1,052	770	<b>2,301</b>
	<b>TOTAL</b>	<b>9</b>	<b>13</b>	<b>60</b>	<b>154</b>	<b>1,004</b>	<b>851</b>	<b>1,356</b>	<b>1,286</b>	<b>4,733</b>
<b>NORTHERN TERRITORY</b>	<b>MALE</b>	0	1	13	34	142	106	26	22	<b>344</b>
	<b>FEMALE</b>	0	0	5	6	31	36	37	17	<b>132</b>
	<b>TOTAL</b>	<b>0</b>	<b>1</b>	<b>18</b>	<b>40</b>	<b>173</b>	<b>142</b>	<b>63</b>	<b>39</b>	<b>476</b>
<b>AUSTRALIAN CAPITAL TERRITORY</b>	<b>MALE</b>	11	7	28	64	284	608	308	266	<b>1,576</b>
	<b>FEMALE</b>	8	1	16	36	88	166	478	338	<b>1,131</b>
	<b>TOTAL</b>	<b>19</b>	<b>8</b>	<b>44</b>	<b>100</b>	<b>372</b>	<b>774</b>	<b>786</b>	<b>604</b>	<b>2,707</b>
<b>OVERSEAS</b>	<b>MALE</b>	3	8	18	34	152	113	24	32	<b>384</b>
	<b>FEMALE</b>	4	2	7	28	30	44	54	32	<b>201</b>
	<b>TOTAL</b>	<b>7</b>	<b>10</b>	<b>25</b>	<b>62</b>	<b>182</b>	<b>157</b>	<b>78</b>	<b>64</b>	<b>585</b>
<b>TOTAL</b>	<b>MALE</b>	247	450	1,534	3,189	23,055	18,990	8,910	17,448	<b>73,823</b>
	<b>FEMALE</b>	244	100	378	1,195	4,660	7,890	33,086	26,812	<b>74,365</b>
	<b>TOTAL</b>	<b>491</b>	<b>550</b>	<b>1,912</b>	<b>4,384</b>	<b>27,715</b>	<b>26,880</b>	<b>41,996</b>	<b>44,260</b>	<b>148,188</b>

**TABLE 4: TREATMENT POPULATION BY STATE, SEX AND AGE GROUP, AS AT 01 JANUARY 2016****WHITE CARD**

		<b>UNDER 30</b>	<b>30-39</b>	<b>40-49</b>	<b>50-59</b>	<b>60-69</b>	<b>70-79</b>	<b>80-89</b>	<b>90 &amp; OVER</b>	<b>TOTAL</b>
<b>NEW SOUTH WALES</b>	<b>MALE</b>	585	1,042	1,820	2,934	3,161	827	879	755	<b>12,004</b>
	<b>FEMALE</b>	144	193	345	311	108	26	53	260	<b>1,440</b>
	<b>TOTAL</b>	<b>729</b>	<b>1,235</b>	<b>2,165</b>	<b>3,245</b>	<b>3,269</b>	<b>853</b>	<b>932</b>	<b>1,015</b>	<b>13,444</b>
<b>VICTORIA</b>	<b>MALE</b>	408	692	1,154	1,888	2,097	511	654	639	<b>8,044</b>
	<b>FEMALE</b>	80	146	236	239	75	12	33	152	<b>973</b>
	<b>TOTAL</b>	<b>488</b>	<b>838</b>	<b>1,390</b>	<b>2,127</b>	<b>2,172</b>	<b>523</b>	<b>687</b>	<b>791</b>	<b>9,017</b>
<b>QUEENSLAND</b>	<b>MALE</b>	936	1,646	2,913	4,087	4,215	1,049	675	464	<b>15,986</b>
	<b>FEMALE</b>	197	357	605	458	178	20	32	138	<b>1,985</b>
	<b>TOTAL</b>	<b>1,133</b>	<b>2,003</b>	<b>3,518</b>	<b>4,545</b>	<b>4,393</b>	<b>1,069</b>	<b>707</b>	<b>602</b>	<b>17,970</b>
<b>SOUTH AUSTRALIA</b>	<b>MALE</b>	182	281	470	839	937	248	309	219	<b>3,485</b>
	<b>FEMALE</b>	31	52	101	97	32	4	14	58	<b>389</b>
	<b>TOTAL</b>	<b>213</b>	<b>333</b>	<b>571</b>	<b>936</b>	<b>969</b>	<b>252</b>	<b>323</b>	<b>277</b>	<b>3,874</b>
<b>WESTERN AUSTRALIA</b>	<b>MALE</b>	200	484	996	1,304	1,263	463	418	225	<b>5,353</b>
	<b>FEMALE</b>	60	135	197	133	42	9	15	76	<b>667</b>
	<b>TOTAL</b>	<b>260</b>	<b>619</b>	<b>1,193</b>	<b>1,437</b>	<b>1,305</b>	<b>472</b>	<b>433</b>	<b>301</b>	<b>6,020</b>
<b>TASMANIA</b>	<b>MALE</b>	69	126	228	355	366	102	62	37	<b>1,345</b>
	<b>FEMALE</b>	12	43	64	50	20	3	4	12	<b>208</b>
	<b>TOTAL</b>	<b>81</b>	<b>169</b>	<b>292</b>	<b>405</b>	<b>386</b>	<b>105</b>	<b>66</b>	<b>49</b>	<b>1,553</b>
<b>NORTHERN TERRITORY</b>	<b>MALE</b>	68	124	186	221	139	20	11	2	<b>771</b>
	<b>FEMALE</b>	15	27	30	25	5	0	1	1	<b>104</b>
	<b>TOTAL</b>	<b>83</b>	<b>151</b>	<b>216</b>	<b>246</b>	<b>144</b>	<b>20</b>	<b>12</b>	<b>3</b>	<b>875</b>
<b>AUSTRALIAN CAPITAL TERRITORY</b>	<b>MALE</b>	88	160	351	678	658	144	78	39	<b>2,196</b>
	<b>FEMALE</b>	26	62	115	126	27	5	2	14	<b>377</b>
	<b>TOTAL</b>	<b>114</b>	<b>222</b>	<b>466</b>	<b>804</b>	<b>685</b>	<b>149</b>	<b>80</b>	<b>53</b>	<b>2,573</b>
<b>OVERSEAS</b>	<b>MALE</b>	10	28	70	120	109	48	19	38	<b>442</b>
	<b>FEMALE</b>	3	9	23	9	2	0	1	4	<b>51</b>
	<b>TOTAL</b>	<b>13</b>	<b>37</b>	<b>93</b>	<b>129</b>	<b>111</b>	<b>48</b>	<b>20</b>	<b>42</b>	<b>493</b>
<b>TOTAL</b>	<b>MALE</b>	2,546	4,583	8,188	12,426	12,945	3,412	3,105	2,418	<b>49,626</b>
	<b>FEMALE</b>	568	1,024	1,716	1,448	489	79	155	715	<b>6,194</b>
	<b>TOTAL</b>	<b>3,114</b>	<b>5,607</b>	<b>9,904</b>	<b>13,874</b>	<b>13,434</b>	<b>3,491</b>	<b>3,260</b>	<b>3,133</b>	<b>55,820</b>



**TABLE 5: TREATMENT POPULATION BY ACT, CARD TYPE, SEX AND AGE GROUP, AS AT 01 JANUARY 2016**

			<b>UNDER 30</b>	<b>30-39</b>	<b>40-49</b>	<b>50-59</b>	<b>60-69</b>	<b>70-79</b>	<b>80-89</b>	<b>90 &amp; OVER</b>	<b>TOTAL</b>
<b>VEA</b>	<b>GOLD</b>	<b>MALE</b>	154	192	1,284	3,086	23,003	18,986	8,910	17,448	<b>73,063</b>
		<b>FEMALE</b>	176	50	327	1,171	4,649	7,890	33,086	26,812	<b>74,161</b>
		<b>TOTAL</b>	<b>330</b>	<b>242</b>	<b>1,611</b>	<b>4,257</b>	<b>27,652</b>	<b>26,876</b>	<b>41,996</b>	<b>44,260</b>	<b>147,224</b>
	<b>WHITE</b>	<b>MALE</b>	164	873	5,147	10,939	11,669	2,807	2,830	2,415	<b>36,846</b>
		<b>FEMALE</b>	44	152	1,000	1,148	393	55	151	715	<b>3,658</b>
		<b>TOTAL</b>	<b>208</b>	<b>1,025</b>	<b>6,147</b>	<b>12,087</b>	<b>12,062</b>	<b>2,862</b>	<b>2,981</b>	<b>3,130</b>	<b>40,504</b>
<b>TOTAL</b>		<b>MALE</b>	318	1,065	6,431	14,025	34,672	21,793	11,740	19,863	<b>109,909</b>
		<b>FEMALE</b>	220	202	1,327	2,319	5,042	7,945	33,237	27,527	<b>77,819</b>
		<b>TOTAL</b>	<b>538</b>	<b>1,267</b>	<b>7,758</b>	<b>16,344</b>	<b>39,714</b>	<b>29,738</b>	<b>44,977</b>	<b>47,390</b>	<b>187,728</b>
<b>MRCA</b>	<b>GOLD</b>	<b>MALE</b>	93	258	250	103	52	4	0	0	<b>760</b>
		<b>FEMALE</b>	68	50	51	24	11	0	0	0	<b>204</b>
		<b>TOTAL</b>	<b>161</b>	<b>308</b>	<b>301</b>	<b>127</b>	<b>63</b>	<b>4</b>	<b>0</b>	<b>0</b>	<b>964</b>
	<b>WHITE</b>	<b>MALE</b>	2,378	3,022	1,833	920	358	18	0	0	<b>8,529</b>
		<b>FEMALE</b>	520	599	335	143	25	0	0	0	<b>1,622</b>
		<b>TOTAL</b>	<b>2,898</b>	<b>3,621</b>	<b>2,168</b>	<b>1,063</b>	<b>383</b>	<b>18</b>	<b>0</b>	<b>0</b>	<b>10,151</b>
<b>TOTAL</b>		<b>MALE</b>	2,471	3,280	2,083	1,023	410	22	0	0	<b>9,289</b>
		<b>FEMALE</b>	588	649	386	167	36	0	0	0	<b>1,826</b>
		<b>TOTAL</b>	<b>3,059</b>	<b>3,929</b>	<b>2,469</b>	<b>1,190</b>	<b>446</b>	<b>22</b>	<b>0</b>	<b>0</b>	<b>11,115</b>
<b>SRCA</b>	<b>WHITE</b>	<b>MALE</b>	4	688	1,208	567	918	587	275	3	<b>4,251</b>
		<b>FEMALE</b>	4	273	381	157	71	24	4	0	<b>914</b>
		<b>TOTAL</b>	<b>8</b>	<b>961</b>	<b>1,589</b>	<b>724</b>	<b>989</b>	<b>611</b>	<b>279</b>	<b>3</b>	<b>5,165</b>

**Note:**

This table shows the Act liable to pay for all eligible treatment. Where a client has treatment eligibility under multiple Acts, all treatment costs are paid under a single Act.

**TABLE 6: TREATMENT POPULATION BY CONFLICT, CARD AND SEX, AS AT 01 JANUARY 2016**

	Sex	Card	CONFLICTS - AUSTRALIAN FORCES											Total
			First World War	Second World War	Korea, Malaya & FESR	Vietnam	Gulf War	East Timor	Afghanistan	Iraq	Other Operations	Peace-keeping Forces	No Operational Service	
Veterans	Male	Gold	0	20,087	12,472	37,028	295	1,459	554	362	809	879	6,943	73,426
		White	0	2,652	513	3,210	684	3,687	2,487	1,229	1,119	1,241	31,635	45,918
		<b>Total</b>	<b>0</b>	<b>22,739</b>	<b>12,985</b>	<b>40,238</b>	<b>979</b>	<b>5,146</b>	<b>3,041</b>	<b>1,591</b>	<b>1,928</b>	<b>2,120</b>	<b>38,578</b>	<b>119,344</b>
	Female	Gold	0	872	32	117	19	82	33	28	39	15	444	1,621
		White	0	747	11	51	42	310	185	119	116	78	4,551	6,046
		<b>Total</b>	<b>0</b>	<b>1,619</b>	<b>43</b>	<b>168</b>	<b>61</b>	<b>392</b>	<b>218</b>	<b>147</b>	<b>155</b>	<b>93</b>	<b>4,995</b>	<b>7,667</b>
Total	Gold	0	20,959	12,504	37,145	314	1,541	587	390	848	894	7,387	75,047	
	<b>White Total</b>	<b>0</b>	<b>3,399</b>	<b>524</b>	<b>3,261</b>	<b>726</b>	<b>3,997</b>	<b>2,672</b>	<b>1,348</b>	<b>1,235</b>	<b>1,319</b>	<b>36,186</b>	<b>51,964</b>	
			<b>0</b>	<b>24,358</b>	<b>13,028</b>	<b>40,406</b>	<b>1,040</b>	<b>5,538</b>	<b>3,259</b>	<b>1,738</b>	<b>2,083</b>	<b>2,213</b>	<b>43,573</b>	<b>127,011</b>
Dependants	Male	Gold	10	179	20	71	13	25	21	11	9	10	55	397
		White	0	0	0	0	0	0	0	0	0	0	0	0
		<b>Total</b>	<b>10</b>	<b>179</b>	<b>20</b>	<b>71</b>	<b>13</b>	<b>25</b>	<b>21</b>	<b>11</b>	<b>9</b>	<b>10</b>	<b>55</b>	<b>397</b>
	Female	Gold	103	61,803	5,916	6,505	31	74	63	33	31	98	1,084	72,744
		White	0	0	0	0	0	0	0	0	0	0	0	0
		<b>Total</b>	<b>103</b>	<b>61,803</b>	<b>5,916</b>	<b>6,505</b>	<b>31</b>	<b>74</b>	<b>63</b>	<b>33</b>	<b>31</b>	<b>98</b>	<b>1,084</b>	<b>72,744</b>
Total	Gold	113	61,982	5,936	6,576	44	99	84	44	40	108	1,139	73,141	
	<b>White Total</b>	<b>0</b>	<b>0</b>	<b>0</b>	<b>0</b>	<b>0</b>	<b>0</b>	<b>0</b>	<b>0</b>	<b>0</b>	<b>0</b>	<b>0</b>	<b>0</b>	
			<b>113</b>	<b>61,982</b>	<b>5,936</b>	<b>6,576</b>	<b>44</b>	<b>99</b>	<b>84</b>	<b>44</b>	<b>40</b>	<b>108</b>	<b>1,139</b>	<b>73,141</b>
<b>Total</b>			<b>113</b>	<b>86,340</b>	<b>18,964</b>	<b>46,982</b>	<b>1,084</b>	<b>5,637</b>	<b>3,343</b>	<b>1,782</b>	<b>2,123</b>	<b>2,321</b>	<b>44,712</b>	<b>200,152</b>
			<b>British Commonwealth and Allied veterans with a White card</b>											<b>3,856</b>
<b>Grand Total</b>														<b>204,008</b>

**Notes:**

- (1) For veterans, the conflict categories have been derived from a combination of the conflict(s) to which any accepted disabilities have been attributed, the conflict from which the veteran has Qualifying Service (QS) or the conflict(s) listed in the veterans' service details (where known by DVA). Where none of these are known, DVA File Number is used.
- (2) For dependants the conflict categories have been derived from a combination of the conflict(s) to which any accepted disabilities for the deceased veteran have been attributed or the conflict(s) listed in the deceased veterans' service details (where known by DVA). Where neither of these are known, DVA File Number is used.
- (3) Veterans and dependants of veterans who have served in multiple conflicts are counted once under each relevant conflict group. For this reason the reported numbers for each conflict must not be summed.

**TABLE 7: PRISONERS OF WAR, BY POW COUNTRY AND STATE  
WITH A GOLD CARD, AS AT 01 JANUARY 2016**

	NSW	VIC	QLD	SA	WA	TAS	NT	ACT	OS	AUS
<b>EUROPE</b>	32	28	20	9	17	3	2	3	0	<b>114</b>
<b>JAPAN</b>	61	36	31	12	15	7	0	1	1	<b>164</b>
<b>KOREA</b>	3	0	1	1	1	0	0	0	0	<b>6</b>
<b>TOTAL</b>	<b>96</b>	<b>64</b>	<b>52</b>	<b>22</b>	<b>33</b>	<b>10</b>	<b>2</b>	<b>4</b>	<b>1</b>	<b>284</b>

**TABLE 8: DVA TREATMENT POPULATION COMPARED WITH AUSTRALIAN POPULATION  
BY AGE GROUP OVER 64 AND SEX, AS AT 01 JANUARY 2016**

Age Groups	Males			Females			Persons		
	Total Population <sup>1</sup>	Treatment Population	% of Total Population	Total Population <sup>1</sup>	Treatment Population	% of Total Population	Total Population <sup>1</sup>	Treatment Population	% of Total Population
<b>65-69</b>	570,582	26,033	4.6%	582,977	3,180	0.5%	1,153,559	29,213	2.5%
<b>70-74</b>	419,402	14,944	3.6%	438,461	3,214	0.7%	857,863	18,158	2.1%
<b>75-79</b>	302,432	7,458	2.5%	331,850	4,755	1.4%	634,282	12,213	1.9%
<b>80-84</b>	198,364	5,281	2.7%	253,360	9,347	3.7%	451,724	14,628	3.2%
<b>85 &amp; over</b>	172,991	26,600	15.4%	299,137	51,421	17.2%	472,128	78,021	16.5%
<b>65 &amp; over</b>	1,663,771	80,316	4.8%	1,905,785	71,917	3.8%	3,569,556	152,233	4.3%
<b>70 &amp; over</b>	1,093,189	54,283	5.0%	1,322,808	68,737	5.2%	2,415,997	123,020	5.1%
<b>75 &amp; over</b>	673,787	39,339	5.8%	884,347	65,523	7.4%	1,558,134	104,862	6.7%
<b>80 &amp; over</b>	371,355	31,881	8.6%	552,497	60,768	11.0%	923,852	92,649	10.0%
<b>85 &amp; over</b>	172,991	26,600	15.4%	299,137	51,421	17.2%	472,128	78,021	16.5%

Source:

<sup>1</sup> Australian Demographic Statistics June 2015 ABS Cat. No. 3101.0 (Table 8)

**TABLE 9: TREATMENT POPULATION TRENDS - ACTUAL AND PROJECTIONS AS AT 31 DECEMBER**

	ACTUALS					PROJECTIONS									
	2011	2012	2013	2014	2015	2016	2017	2018	2019	2020	2021	2022	2023	2024	2025
<b>CARD</b>															
<b>Gold</b>	196,619	185,031	174,168	163,578	153,033	143,400	133,800	124,800	116,400	108,700	101,600	95,300	89,700	84,700	80,300
<b>White</b>	48,986	48,769	49,013	53,984	55,148	56,400	57,400	58,500	59,700	61,000	62,300	63,500	64,700	65,900	66,900
<b>GENDER</b>															
<b>Male</b>	142,556	135,572	129,865	128,640	124,947	121,800	118,700	116,200	114,200	112,500	111,200	110,000	109,100	108,200	107,300
<b>Female</b>	103,049	98,228	93,316	88,922	83,234	78,000	72,500	67,100	62,000	57,200	52,800	48,800	45,400	42,400	39,900
<b>AVERAGE AGE</b>															
<b>Male</b>	72.5	71.9	71.3	70.0	69.1	68.3	67.7	67.2	66.9	66.6	66.5	66.5	66.6	66.8	67.0
<b>Female</b>	82.9	83.2	83.4	83.1	83.0	82.8	82.6	82.3	81.9	81.4	80.7	80.0	79.3	78.6	77.9
<b>STATE</b>															
<b>NSW</b>	82,750	78,124	74,100	71,241	67,485	64,000	60,600	57,400	54,500	51,900	49,600	47,600	45,800	44,300	43,000
<b>Vic</b>	51,740	48,623	45,783	43,574	40,835	38,400	36,100	33,900	31,900	30,100	28,600	27,200	26,000	25,000	24,100
<b>Qld</b>	60,429	58,624	56,987	57,091	55,935	54,900	53,600	52,400	51,300	50,300	49,400	48,600	47,900	47,300	46,700
<b>SA</b>	20,463	19,376	18,408	17,996	17,180	16,500	15,900	15,200	14,700	14,200	13,800	13,400	13,100	12,800	12,600
<b>WA</b>	21,758	20,941	20,192	20,020	19,286	18,700	18,100	17,600	17,100	16,600	16,200	15,900	15,500	15,200	15,000
<b>Tas</b>	8,465	8,112	7,711	7,640	7,460	7,300	7,000	6,800	6,700	6,500	6,300	6,200	6,100	6,000	5,900
<b>Total</b>	245,605	233,800	223,181	217,562	208,181	199,800	191,300	183,400	176,200	169,700	163,900	158,900	154,400	150,600	147,200

- Notes:**
1. State figures are by state of residence with ACT and NT included in NSW and SA respectively.
  2. Projected client numbers may not add exactly to totals due to rounding.
  3. Figures to December 2015 are actual.

**TABLE 9: TREATMENT POPULATION TRENDS - ACTUAL AND PROJECTIONS AS AT 31 DECEMBER (Continuation)**

	ACTUALS					PROJECTIONS									
	2011	2012	2013	2014	2015	2016	2017	2018	2019	2020	2021	2022	2023	2024	2025
<b>GOLD AND WHITE CARDS</b>															
<b>AGE GROUP</b>															
<55	24,094	24,218	24,883	28,500	29,765	30,500	30,400	30,200	30,000	29,700	29,400	28,900	28,100	27,100	25,900
55-59	9,248	8,798	8,695	9,098	9,230	9,600	10,100	10,700	11,100	11,200	11,200	11,200	11,200	11,400	11,800
60-64	25,550	21,406	17,397	14,306	12,497	11,700	11,300	11,300	11,400	11,600	12,100	12,600	13,100	13,500	13,700
65-69	18,531	23,398	27,851	31,694	30,637	27,700	24,200	20,400	17,400	15,400	14,300	13,700	13,400	13,400	13,500
70-74	12,156	12,124	12,064	12,523	15,968	20,300	24,900	29,200	32,500	31,800	28,800	25,400	21,900	19,000	16,900
75-79	14,757	13,547	12,536	12,361	12,215	12,200	12,200	12,300	12,600	15,500	19,800	23,800	27,500	30,300	29,800
80-84	34,958	28,025	23,081	19,129	15,881	13,800	12,600	11,900	11,500	11,300	11,300	11,300	11,300	11,500	14,000
85-89	72,043	63,468	53,912	43,958	34,470	27,400	22,000	17,900	14,600	12,000	10,300	9,300	8,700	8,400	8,200
90+	34,268	38,816	42,762	45,993	47,518	46,500	43,400	39,500	35,200	31,000	26,700	22,700	19,100	16,000	13,400
<b>Total</b>	<b>245,605</b>	<b>233,800</b>	<b>223,181</b>	<b>217,562</b>	<b>208,181</b>	<b>199,800</b>	<b>191,300</b>	<b>183,400</b>	<b>176,200</b>	<b>169,700</b>	<b>163,900</b>	<b>158,900</b>	<b>154,400</b>	<b>150,600</b>	<b>147,200</b>
<b>GOLD CARD</b>															
<b>AGE GROUP</b>															
<55	4,689	4,587	4,611	4,677	4,710	4,600	4,400	4,300	4,100	4,000	3,900	3,800	3,700	3,600	3,400
55-59	3,338	2,874	2,710	2,678	2,621	2,600	2,600	2,600	2,500	2,400	2,300	2,100	2,000	2,000	2,000
60-64	18,461	14,680	11,038	7,880	5,920	5,000	4,400	4,000	3,800	3,600	3,600	3,500	3,500	3,400	3,300
65-69	14,702	18,749	22,390	25,099	23,862	21,000	17,500	13,700	10,500	8,300	6,900	6,100	5,500	5,100	4,800
70-74	10,652	10,655	10,674	10,943	14,241	18,000	21,900	25,600	28,200	26,900	23,500	19,700	15,900	12,700	10,300
75-79	13,445	12,206	11,167	10,738	10,561	10,600	10,600	10,600	10,800	13,600	17,400	20,900	24,000	26,200	25,200
80-84	32,500	26,628	21,919	17,935	14,635	12,500	11,200	10,300	9,800	9,600	9,500	9,400	9,400	9,600	11,800
85-89	66,674	58,250	49,530	40,483	32,026	25,900	21,000	17,000	13,700	11,100	9,300	8,200	7,500	7,100	6,800
90+	32,158	36,402	40,129	43,145	44,457	43,300	40,300	36,800	33,000	29,200	25,300	21,500	18,000	15,100	12,600
<b>Total</b>	<b>196,619</b>	<b>185,031</b>	<b>174,168</b>	<b>163,578</b>	<b>153,033</b>	<b>143,400</b>	<b>133,800</b>	<b>124,800</b>	<b>116,400</b>	<b>108,700</b>	<b>101,600</b>	<b>95,300</b>	<b>89,700</b>	<b>84,700</b>	<b>80,300</b>
<b>WHITE CARD</b>															
<b>AGE GROUP</b>															
<55	19,405	19,631	20,272	23,823	25,055	25,800	26,000	26,000	25,900	25,700	25,500	25,100	24,400	23,500	22,500
55-59	5,910	5,924	5,985	6,420	6,609	7,100	7,600	8,100	8,600	8,800	8,900	9,000	9,200	9,400	9,800
60-64	7,089	6,726	6,359	6,426	6,577	6,700	6,900	7,200	7,600	8,000	8,500	9,100	9,600	10,100	10,400
65-69	3,829	4,649	5,461	6,595	6,775	6,700	6,700	6,700	6,900	7,100	7,400	7,600	7,900	8,300	8,700
70-74	1,504	1,469	1,390	1,580	1,727	2,300	3,000	3,600	4,300	4,900	5,300	5,700	6,000	6,300	6,600
75-79	1,312	1,341	1,369	1,623	1,654	1,700	1,700	1,700	1,700	1,900	2,300	2,900	3,500	4,100	4,600
80-84	2,458	1,397	1,162	1,194	1,246	1,300	1,500	1,600	1,700	1,800	1,800	1,900	1,900	1,900	2,200
85-89	5,369	5,218	4,382	3,475	2,444	1,500	1,000	900	800	900	1,000	1,100	1,200	1,300	1,400
90+	2,110	2,414	2,633	2,848	3,061	3,200	3,100	2,700	2,200	1,800	1,500	1,200	1,000	900	800
<b>Total</b>	<b>48,986</b>	<b>48,769</b>	<b>49,013</b>	<b>53,984</b>	<b>55,148</b>	<b>56,400</b>	<b>57,400</b>	<b>58,500</b>	<b>59,700</b>	<b>61,000</b>	<b>62,300</b>	<b>63,500</b>	<b>64,700</b>	<b>65,900</b>	<b>66,900</b>