



Australian Government

Department of Veterans' Affairs

DVA PENSIONER SUMMARY

SEPTEMBER 2011

Notes - DVA Pensioner Summary - September 2011

Method of extraction

The data used for this publication was extracted using "the current date" method of extraction which read data as at 30/09/2011. Please note that figures can be slightly overstated because of normal delays in processing death cases.

As noted in the March 2002 publication, extracting data by 'eligibility' alone resulted in some figures being overstated. From June 2002 onwards data is extracted on both 'eligibility' and 'payability', i.e. on the basis of a client not only being entitled to receive a benefit, but also in actual receipt of the benefit/s or payment.

Data integrity

The numbers shown in the publication reflect the data currently stored in the Department's client database. Any inaccuracies existing in the publication may be attributed to data entry errors or various data conversions in the past. All due professional care is taken in correcting such errors, especially where they can be readily detected, by amending the client statistics as necessary. However, many errors are hidden within large aggregate numbers requiring extensive reconciliation and verification processes for detection. Such inconsistencies are actioned by business areas as they are detected.

Conflict groupings

Significant changes have been made to tables reporting veterans by conflict. Tables 5 and 6, reporting on veterans receiving Service Pension, now include a category 'Other Post 1972 Conflicts'. This group includes Cambodia, Namibia, Rwanda, Somalia, the War in Iraq (2003) and Afghanistan.

Changes have also been made to the tables reporting on veterans receiving Disability Pension. The Second World War category now includes mariners from the Merchant Navy. Veterans who served in the Far East Strategic Reserve are now included with those who served in Korea and/or Malaya. The Vietnam group may include some veterans who served in North East Thailand. The 2003 War in Iraq, and the 2001-2003 operations in Afghanistan (previously 'War on Terror') are now reported and an additional category 'Other Operations' has been created comprising of Namibia, Cambodia, Yugoslavia and Somalia. The 'Serving Member' category refers to service men and women who were on active duty between 1972 and 1994 but did not serve in an operational area.

Those veterans who have served in more than one conflict or operational area have been included only in the earliest of those conflicts. For example, a veteran who saw service in both Korea and later Vietnam will not be included under Vietnam. Similarly, a veteran from Afghanistan who has also served in East Timor will only be included in the East Timor figure. Reports specific to any individual conflict or operation are available on request.

Revision

All changes mentioned above have been made following consultation with the Policy and Development and Service Delivery Divisions. As part of an on-going review of statistical products and publications, this report will continue to be enhanced in future issues in consultation with relevant business areas.

Tables with "state"

Prior to June 2009 tables with "state" were based on state of processing, not state of residence. ACT and the NT were included in the NSW and South Australian results respectively, with overseas residents included in the Tasmania figure. From June 2009 onwards residential address is used with ACT, NT and overseas reported separately.

Feedback

Any comments for improving both the content and layout of this publication can be directed to James Rope on (02) 6289 6702 or via email to stats@dva.gov.au

Contents

Net Total Persons Receiving a Pension From The Department of Veterans' Affairs
Trend Analysis

Charts:

Chart 1 Service Pensioners by State and by Age
Chart 2 Disability Pensioners by State and by Age

Chart 3 War Widow(er) Pensioners by State and by Age
Chart 4 Service, Disability and War Widow(er) Pensioners by State

Tables:

Table 01 Service Pensioners by Classification
Table 02 Disability Pensioners by Broad Rate Group
Table 03 Dependants of Deceased Veterans by Type
Table 04 ISS Recipients and Social Security Age Pensioners
Table 05 Veteran Service Pensioners by Conflict and State
Table 06 Veteran Service Pensioners by Conflict and Age
Table 07 Income Support Beneficiaries by State, Classification and Age
Table 08 Service Pensioners by Rate, Rate Level and State
Table 09 Disability Pensioners by Rate and State
Table 10 Disability Pensioners by Rate and Conflict
Table 11 Disability Pensioners by Conflict, Rate Group and State
Table 12 Disability Pensioners by State, Age and Conflict
Table 13 War Widow(er)s by Age and State
Table 14 War Widow(er)s by Conflict and State
Table 15 Widow(er)s Receiving Income Support Supplement by Rate and State

Table 16 Orphans by Age and State
Table 17 Orphans by Conflict and State
Table 18 Disability Pensioners on Service Pension by Rate and State
Table 19 Disability Pensioners on Service Pension by Rate and Conflict
Table 20 Disability Pensioners on Service Pension by Conflict, Rate Group and State
Table 21 Disability Pensioners on Service Pension by State, Age and Conflict
Table 22 Specific Disability Allowances by Item Number and State
Table 23 Social Security Age Pensioners by Age Group and State
Table 24 Disability Pensioners Also Receiving Social Security Age Pension by Disability Pension Rate and State
Table 25 Disability Pensioners also Receiving Social Security Age Pension by Conflict, Disability Pension Rate Group and Age Group
Table 26 Defence Force Income Support Allowance by Type and State
Table 27 Defence Force Income Support Allowance by Type and Age Group
Table 28 Defence Force Income Support Allowance also Receiving Disability Pension, by Conflict and State

**Net Total Persons Receiving Income Support or a Compensation
Pension From The Department of Veterans' Affairs - September 2011**

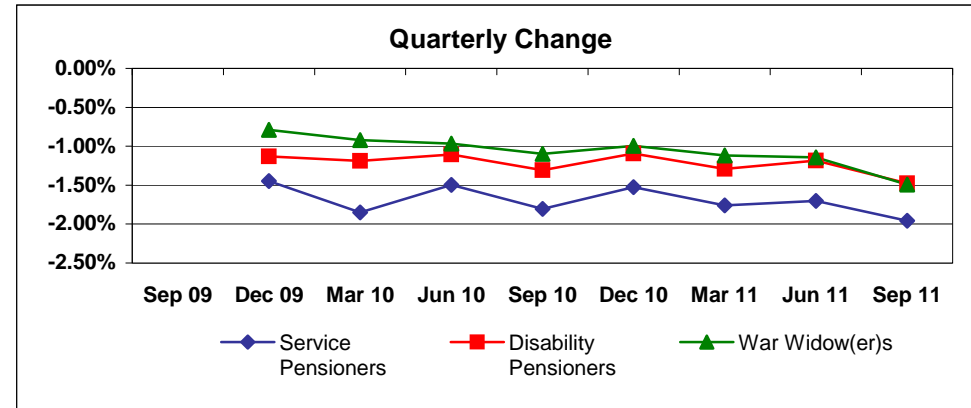
| | |
|--|----------------|
| Veteran Service Pensioners | 86,748 |
| Partner/Widow(er) Service Pensioners | 77,345 |
| Total Service Pensioners | 164,093 |
| | |
| Income Support Supplement recipients | 72,750 |
| | |
| Social Security Age Pensioners | 4,685 |
| | |
| Commonwealth Seniors' Health Card holders | 6,843 |
| | |
| Disability Pensioners receiving Income Support⁽¹⁾ | 61,121 |
| Disability Pensioners not receiving Income Support | 53,656 |
| Total Disability Pensioners | 114,777 |
| | |
| War Widow(er) Pensioners receiving Income Support⁽¹⁾ | 72,951 |
| War Widow(er) Pensioners not receiving Income Support | 22,366 |
| Total War Widow(er) Pensioners | 95,317 |
| | |
| Orphan Pensioners | 178 |
| | |
| Net Total⁽²⁾ | 319,805 |

(1) 'Income Support' includes Service Pension, Age Pension or Income Support Supplement.

(2) Components do not add to total due to overlaps.

Trend Analysis

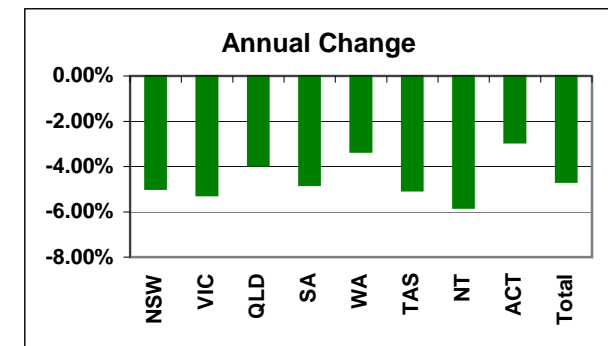
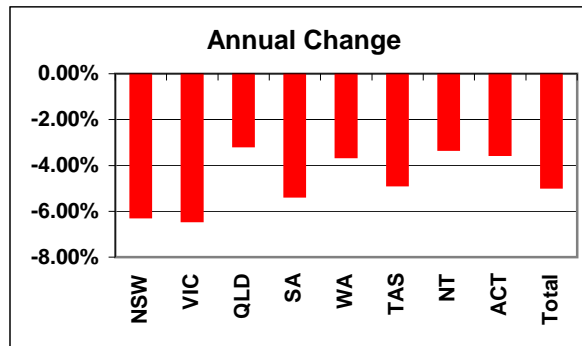
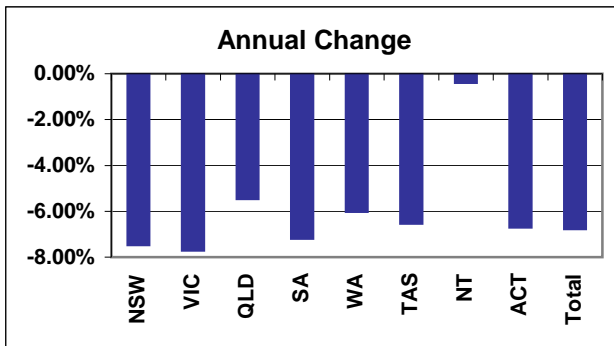
| | Service Pensioners | | Disability Pensioners | | War Widow(er)s | |
|--------|--------------------|--------|-----------------------|--------|----------------|--------|
| | Number | Change | Number | Change | Number | Change |
| Sep 09 | 188,124 | | 126,646 | | 103,840 | |
| Dec 09 | 185,403 | -1.45% | 125,212 | -1.13% | 103,022 | -0.79% |
| Mar 10 | 181,969 | -1.85% | 123,722 | -1.19% | 102,075 | -0.92% |
| Jun 10 | 179,242 | -1.50% | 122,355 | -1.10% | 101,090 | -0.96% |
| Sep 10 | 176,006 | -1.81% | 120,755 | -1.31% | 99,982 | -1.10% |
| Dec 10 | 173,319 | -1.53% | 119,436 | -1.09% | 98,989 | -0.99% |
| Mar 11 | 170,266 | -1.76% | 117,894 | -1.29% | 97,881 | -1.12% |
| Jun 11 | 167,368 | -1.70% | 116,498 | -1.18% | 96,761 | -1.14% |
| Sep 11 | 164,093 | -1.96% | 114,777 | -1.48% | 95,317 | -1.49% |



| | Service Pensioners | | |
|--------------|--------------------|----------------|---------------|
| | Sep 10 | Sep 11 | Change |
| NSW | 53,357 | 49,375 | -7.46% |
| VIC | 35,794 | 33,034 | -7.71% |
| QLD | 41,328 | 39,073 | -5.46% |
| SA | 17,055 | 15,829 | -7.19% |
| WA | 18,675 | 17,551 | -6.02% |
| TAS | 6,301 | 5,889 | -6.54% |
| NT | 508 | 506 | -0.39% |
| ACT | 2,014 | 1,879 | -6.70% |
| Total | 176,006 | 164,093 | -6.77% |

| | Disability Pensioners | | |
|--------------|-----------------------|----------------|---------------|
| | Sep 10 | Sep 11 | Change |
| NSW | 35,839 | 33,597 | -6.26% |
| VIC | 22,887 | 21,416 | -6.43% |
| QLD | 33,491 | 32,434 | -3.16% |
| SA | 8,674 | 8,210 | -5.35% |
| WA | 11,290 | 10,880 | -3.63% |
| TAS | 3,792 | 3,608 | -4.85% |
| NT | 817 | 790 | -3.30% |
| ACT | 3,172 | 3,060 | -3.53% |
| Total | 120,755 | 114,777 | -4.95% |

| | War Widow(er)s | | |
|--------------|----------------|---------------|---------------|
| | Sep 10 | Sep 11 | Change |
| NSW | 35,404 | 33,642 | -4.98% |
| VIC | 24,065 | 22,798 | -5.26% |
| QLD | 20,714 | 19,898 | -3.94% |
| SA | 7,932 | 7,551 | -4.80% |
| WA | 6,961 | 6,729 | -3.33% |
| TAS | 3,153 | 2,994 | -5.04% |
| NT | 155 | 146 | -5.81% |
| ACT | 1,300 | 1,262 | -2.92% |
| Total | 99,982 | 95,317 | -4.67% |



Overseas clients are included in the totals but not reported separately.

Trend Analysis (Continuation)

Service Pensioners

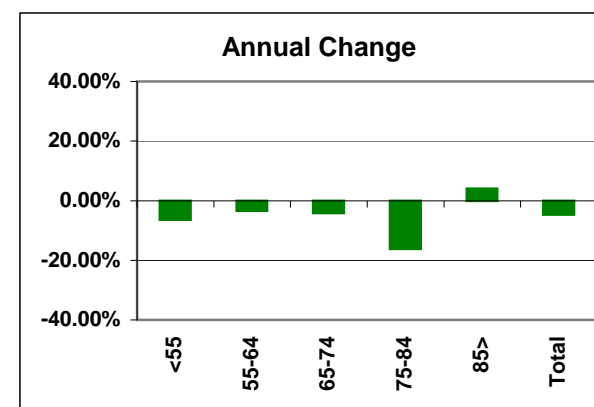
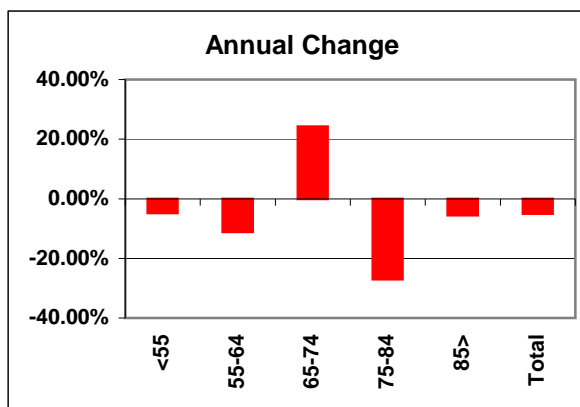
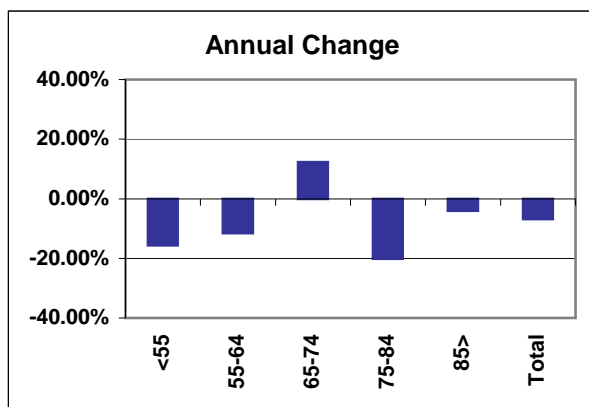
| | Sep 10 | Sep 11 | Change |
|--------------|----------------|----------------|---------------|
| <55 | 3,159 | 2,666 | -15.61% |
| 55-64 | 36,757 | 32,520 | -11.53% |
| 65-74 | 30,207 | 33,915 | 12.28% |
| 75-84 | 41,107 | 32,829 | -20.14% |
| 85> | 64,776 | 62,163 | -4.03% |
| Total | 176,006 | 164,093 | -6.77% |

Disability Pensioners

| | Sep 10 | Sep 11 | Change |
|--------------|----------------|----------------|---------------|
| <55 | 19,344 | 18,423 | -4.76% |
| 55-64 | 31,662 | 28,160 | -11.06% |
| 65-74 | 17,526 | 21,764 | 24.18% |
| 75-84 | 13,574 | 9,911 | -26.99% |
| 85> | 38,649 | 36,519 | -5.51% |
| Total | 120,755 | 114,777 | -4.95% |

War Widow(er)s

| | Sep 10 | Sep 11 | Change |
|--------------|---------------|---------------|---------------|
| <55 | 741 | 694 | -6.34% |
| 55-64 | 3,196 | 3,089 | -3.35% |
| 65-74 | 6,594 | 6,320 | -4.16% |
| 75-84 | 38,862 | 32,563 | -16.21% |
| 85> | 50,589 | 52,651 | 4.08% |
| Total | 99,982 | 95,317 | -4.67% |



Veteran Service Pensioners

| | Sep 10 | Sep 11 | Change |
|----------------------|--------|--------|---------|
| 1. WWII | 38,629 | 32,729 | -15.27% |
| 2. Korea/Malaya/FESR | 8,483 | 8,057 | -5.02% |
| 3. Vietnam | 30,339 | 30,862 | 1.72% |
| 4. Gulf War | 53 | 57 | 7.55% |
| 5. East Timor | 218 | 241 | 10.55% |
| 6. Other Post 1972 | 181 | 197 | 8.84% |
| 7. Defence/P'keeping | | | |
| 8. Comm' & Allied | 15,604 | 14,467 | -7.29% |

Disability Pensioners

| | Sep 10 | Sep 11 | Change |
|----------------------|--------|--------|---------|
| 1. WWII | 45,340 | 39,007 | -13.97% |
| 2. Korea/Malaya/FESR | 10,586 | 10,315 | -2.56% |
| 3. Vietnam | 32,431 | 32,447 | 0.05% |
| 4. Gulf War | 416 | 448 | 7.69% |
| 5. East Timor | 2,103 | 2,246 | 6.80% |
| 6. Other Post 1972 | 1,028 | 1,076 | 4.67% |
| 7. Defence/P'keeping | 28,626 | 29,005 | 1.32% |
| 8. Comm' & Allied | | | |

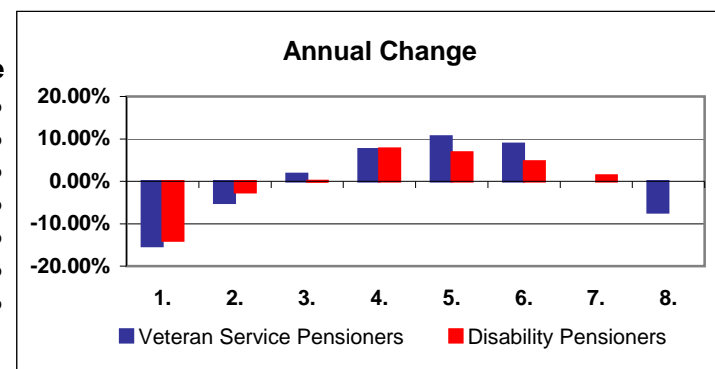


Chart 1: Service Pensioners by State and by Age - September 2011

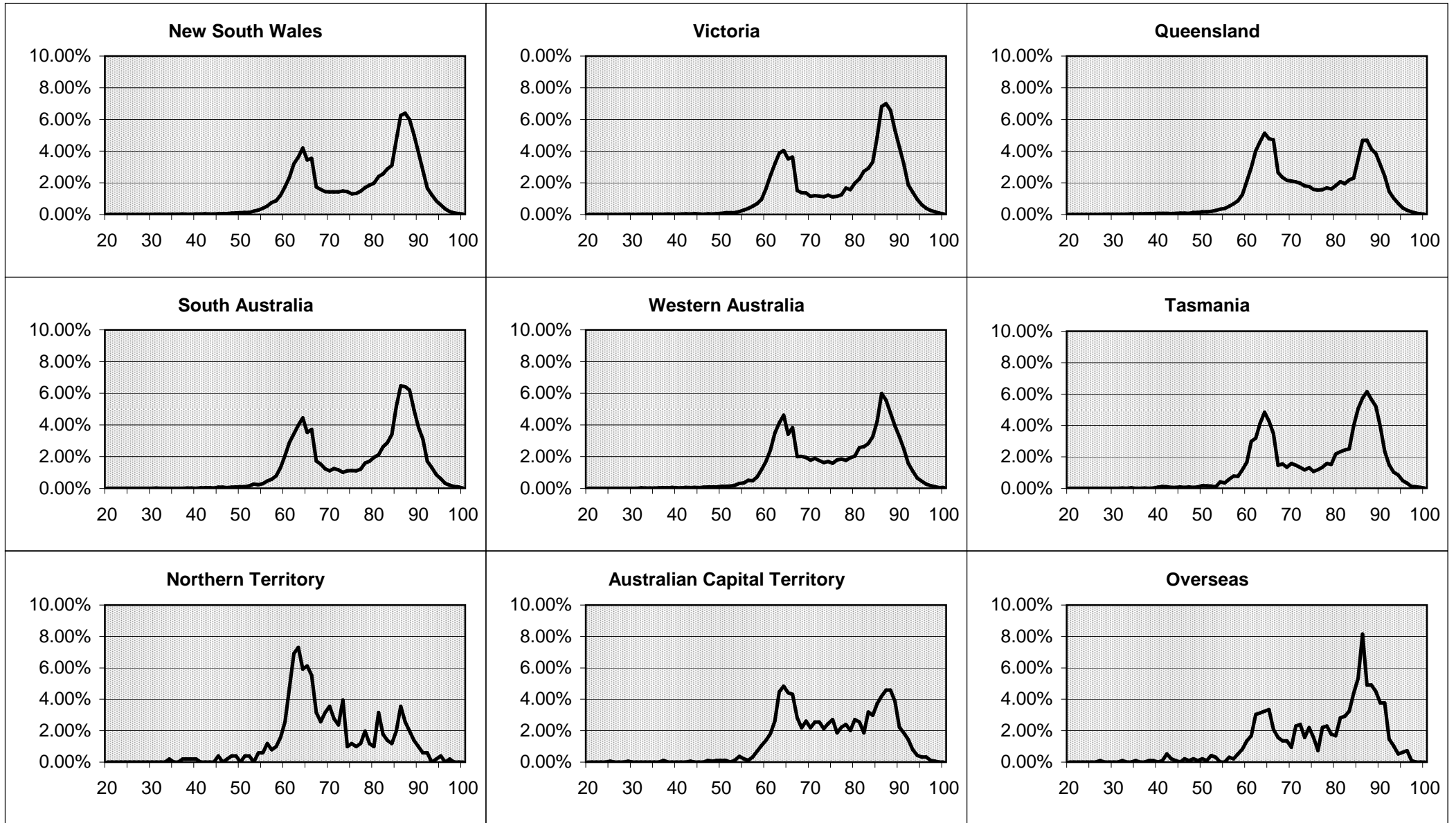


Chart 2: Disability Pensioners by State and by Age - September 2011

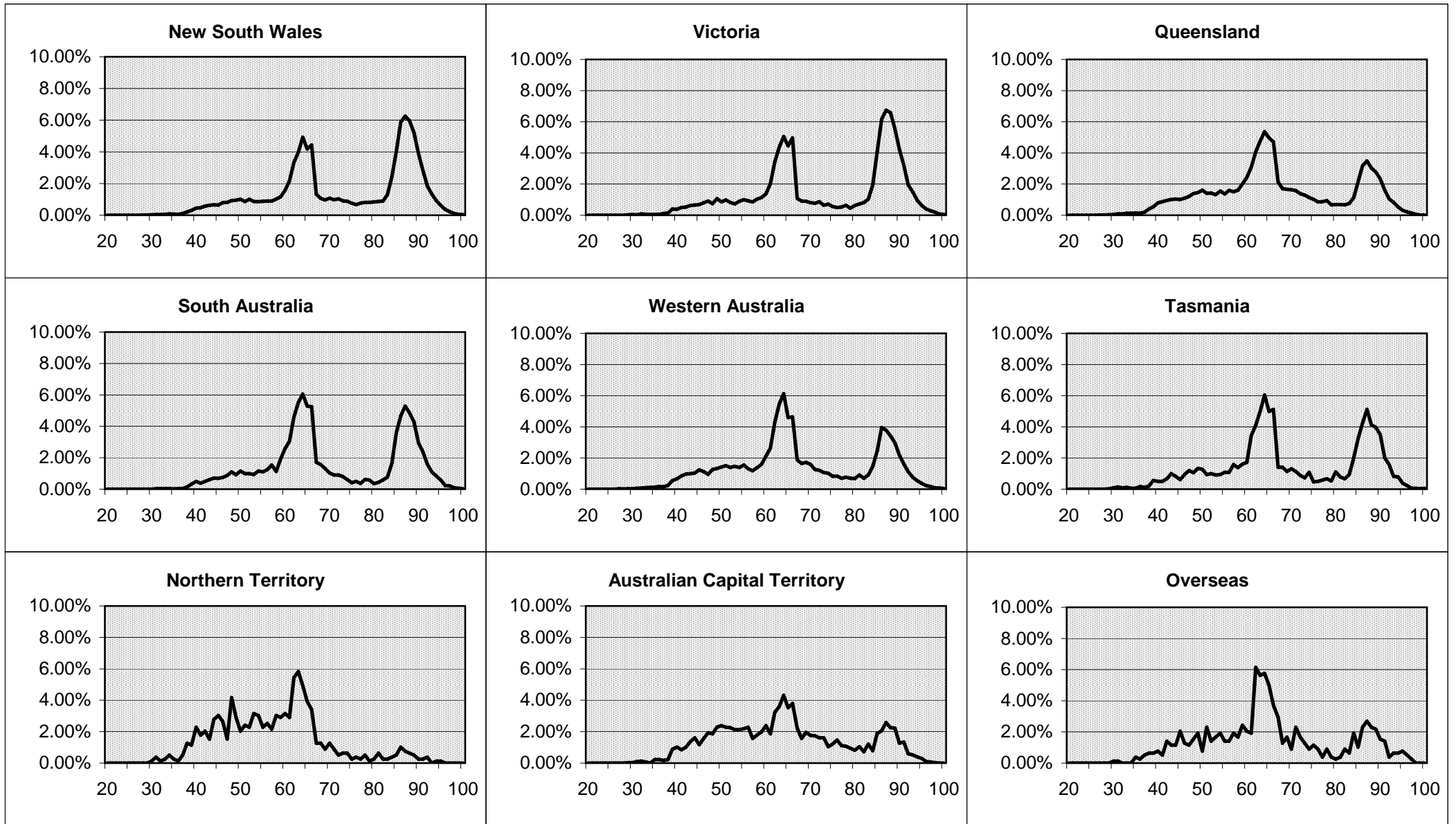


Chart 3: War Widow(er) Pensioners by State and by Age - September 2011

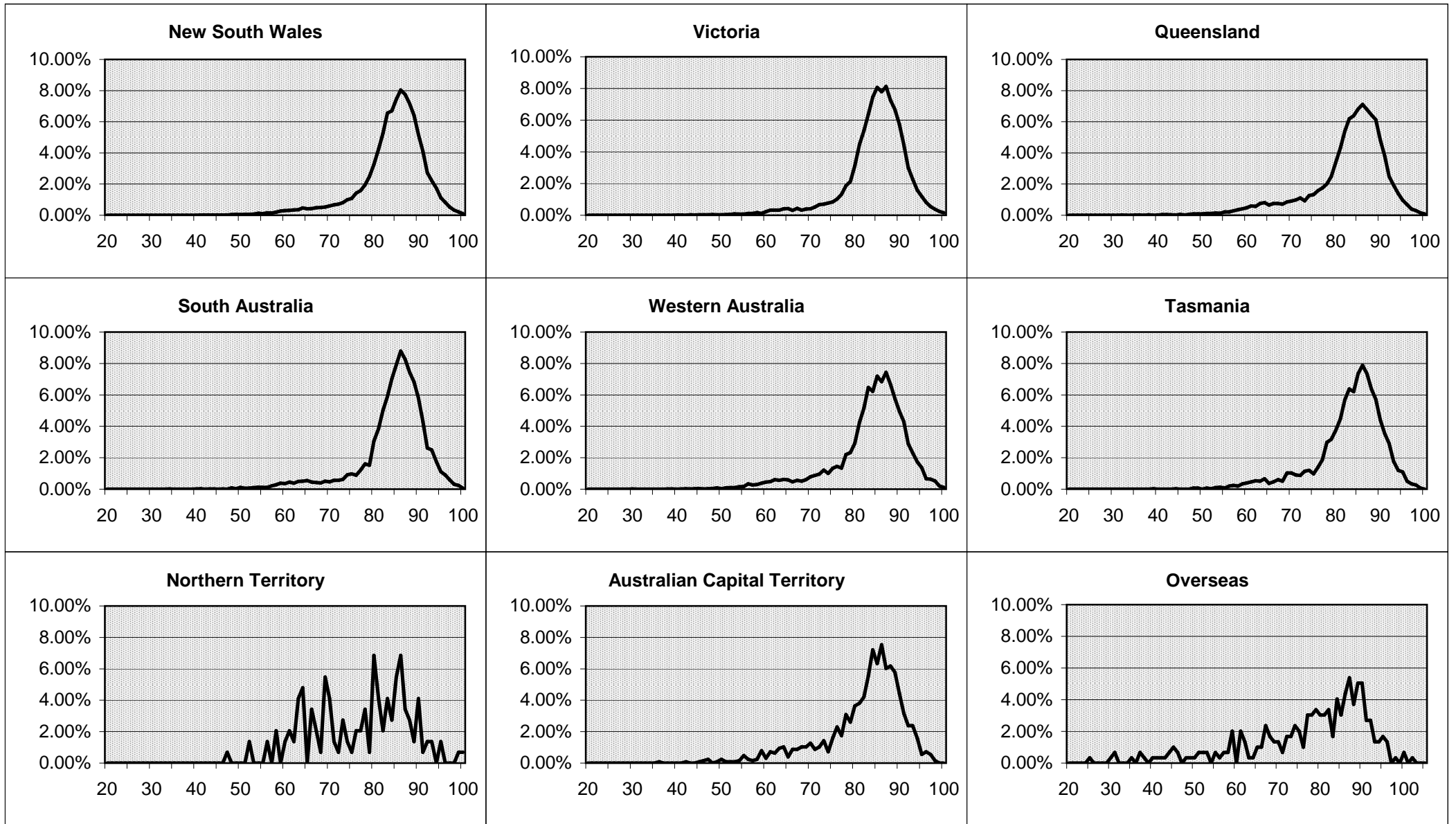


Chart 4: Service, Disability and War Widow(er) Pensioners by State - September 2011

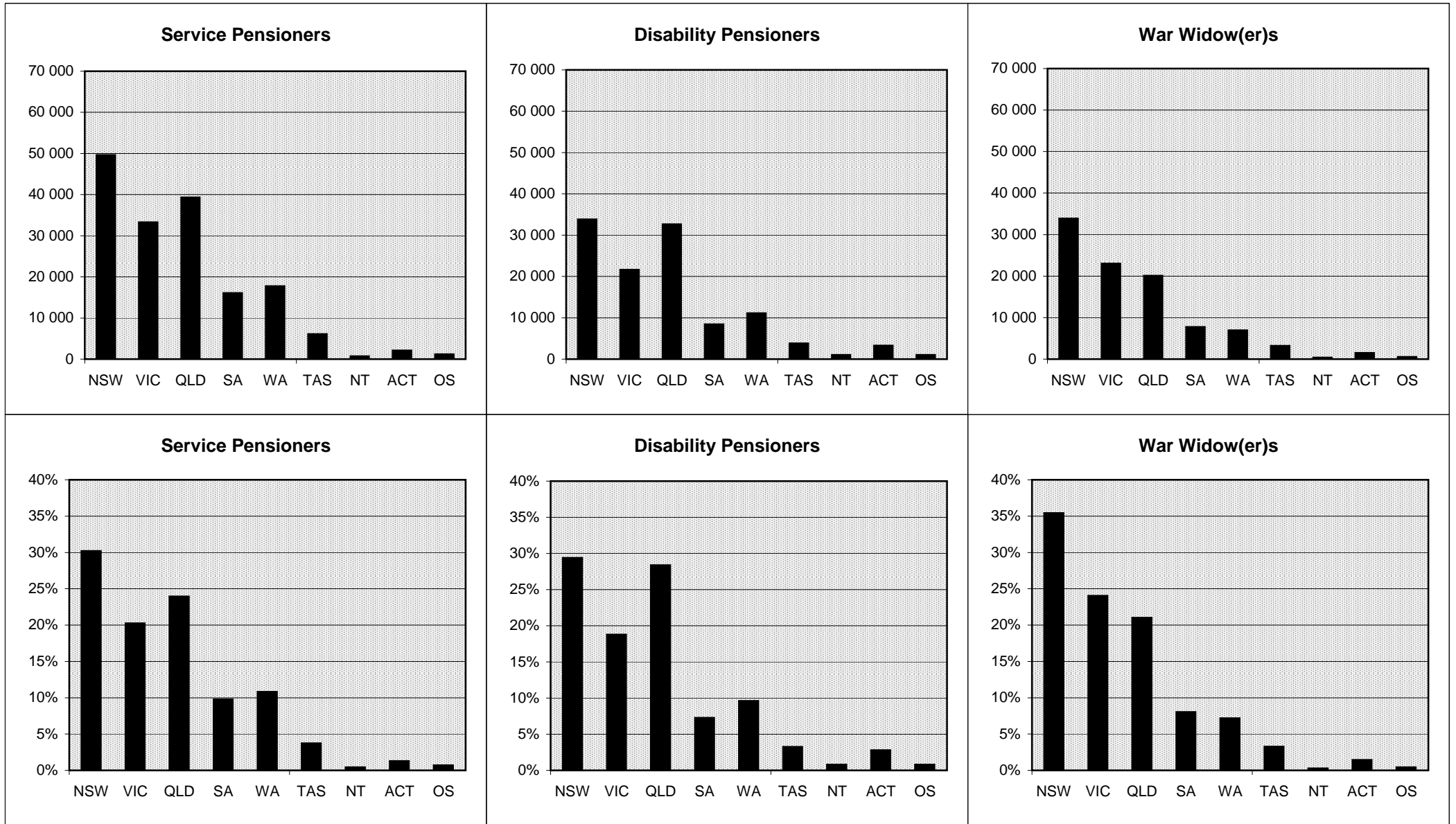


Table 01: Service Pensioners by Classification - Yearly and Quarterly Time Series

| | Old Age | Permanently Incapacitated | Tuberculosis | Total Veterans | Partners/ Widow(er)s | Total Service Pensioners |
|--------------------------------|---------|---------------------------|--------------|----------------|-------------------------|--------------------------|
| At the end of June 2001 | 146 098 | 15 431 | 126 | 161 655 | 129 040 | 290 695 |
| 2002 | 138 066 | 16 922 | 111 | 155 099 | 124 419 | 279 518 |
| 2003 | 129 382 | 18 144 | 91 | 147 617 | 119 887 | 267 504 |
| 2004 | 119 803 | 18 854 | 83 | 138 740 | 114 011 | 252 751 |
| 2005 | 111 491 | 19 160 | 68 | 130 719 | 108 598 | 239 317 |
| 2006 | 103 273 | 19 121 | 64 | 122 458 | 103 110 | 225 568 |
| 2007 | 94 903 | 18 742 | 53 | 113 698 | 96 864 | 210 562 |
| 2008 | 89 893 | 18 641 | 46 | 108 580 | 93 959 | 202 539 |
| 2009 | 83 838 | 18 180 | 35 | 102 053 | 88 972 | 191 025 |
| 2010 | 79 521 | 15 812 | 30 | 95 363 | 83 879 | 179 242 |
| 2011 | 75 663 | 12 964 | 25 | 88 652 | 78 716 | 167 368 |
| September 2008 | 87 543 | 18 487 | 43 | 106 073 | 92 103 | 198 176 |
| December 2008 | 86 394 | 18 445 | 43 | 104 882 | 91 213 | 196 095 |
| March 2009 | 85 001 | 18 319 | 41 | 103 361 | 90 036 | 193 397 |
| June 2009 | 83 838 | 18 180 | 35 | 102 053 | 88 972 | 191 025 |
| September 2009 | 82 320 | 18 015 | 32 | 100 367 | 87 757 | 188 124 |
| December 2009 | 81 012 | 17 765 | 32 | 98 809 | 86 594 | 185 403 |
| March 2010 | 80 196 | 16 685 | 30 | 96 911 | 85 058 | 181 969 |
| June 2010 | 79 521 | 15 812 | 30 | 95 363 | 83 879 | 179 242 |
| September 2010 | 78 420 | 15 085 | 28 | 93 533 | 82 473 | 176 006 |
| December 2010 | 77 670 | 14 317 | 27 | 92 014 | 81 305 | 173 319 |
| March 2011 | 76 562 | 13 753 | 25 | 90 340 | 79 926 | 170 266 |
| June 2011 | 75 663 | 12 964 | 25 | 88 652 | 78 716 | 167 368 |
| September 2011 | 74 488 | 12 237 | 23 | 86 748 | 77 345 | 164 093 |

Note: The source of data for this time series changed from February 1999. The source before February 1999 was IMS SAS jobs which read the Client Data Base (CDB) and the Payment Master File (PMF).

Since February 1999 the source is the DVA Ad hoc Information System, which reads extracts from the CDB.

Due to system changes data from April to August 2000 was unavailable. June 2000 data was estimated.

Table 02: Disability Pensioners by Broad Rate Group - Yearly and Quarterly Time Series

| | Special Rate | Intermediate Rate | EDA | 100% General Rate | 10-95% General Rate | Total |
|-------------------------|--------------|-------------------|--------|----------------------|------------------------|---------|
| At end June 2001 | 25 046 | 1 003 | 11 331 | 25 740 | 99 385 | 162 505 |
| 2002 | 26 423 | 984 | 12 510 | 25 225 | 94 283 | 159 425 |
| 2003 | 27 772 | 965 | 14 256 | 24 154 | 90 718 | 157 865 |
| 2004 | 28 449 | 973 | 14 603 | 23 337 | 87 240 | 154 602 |
| 2005 | 28 786 | 967 | 14 723 | 22 211 | 83 928 | 150 615 |
| 2006 | 28 955 | 933 | 14 259 | 21 188 | 80 211 | 145 546 |
| 2007 | 29 054 | 917 | 13 582 | 19 908 | 76 266 | 139 727 |
| 2008 | 29 428 | 880 | 12 946 | 18 716 | 72 341 | 134 311 |
| 2009 | 29 537 | 842 | 12 137 | 17 298 | 68 332 | 128 146 |
| 2010 | 29 478 | 825 | 11 315 | 16 170 | 64 567 | 122 355 |
| 2011 | 29 315 | 796 | 10 219 | 15 096 | 61 072 | 116 498 |
| September 2008 | 29 345 | 858 | 12 631 | 18 292 | 71 043 | 132 169 |
| December 2008 | 29 474 | 852 | 12 500 | 17 981 | 70 193 | 131 000 |
| March 2009 | 29 465 | 847 | 12 329 | 17 616 | 69 259 | 129 516 |
| June 2009 | 29 537 | 842 | 12 137 | 17 298 | 68 332 | 128 146 |
| September 2009 | 29 504 | 835 | 11 912 | 17 049 | 67 346 | 126 646 |
| December 2009 | 29 499 | 823 | 11 758 | 16 774 | 66 358 | 125 212 |
| March 2010 | 29 452 | 832 | 11 538 | 16 475 | 65 425 | 123 722 |
| June 2010 | 29 478 | 825 | 11 315 | 16 170 | 64 567 | 122 355 |
| September 2010 | 29 459 | 817 | 11 015 | 15 848 | 63 616 | 120 755 |
| December 2010 | 29 437 | 814 | 10 784 | 15 666 | 62 735 | 119 436 |
| March 2011 | 29 350 | 807 | 10 502 | 15 343 | 61 892 | 117 894 |
| June 2011 | 29 315 | 796 | 10 219 | 15 096 | 61 072 | 116 498 |
| September 2011 | 29 211 | 785 | 9 912 | 14 737 | 60 132 | 114 777 |

Note: The source of data for this time series changed from February 1999. The source before February 1999 was IMS SAS jobs which read the Client Data Base (CDB) and the Payment Master File (PMF).

Since February 1999 the source is the DVA Ad hoc Information System, which reads extracts from the CDB.

Due to system changes data from April to August 2000 was unavailable. June 2000 data was estimated.

Table 03: Dependents of Deceased Veterans by Pension Type - Yearly and Quarterly Time Series

| | War Widow(er)s | Orphans | Total |
|-------------------------|-----------------------|----------------|--------------|
| At end June 2001 | 110 656 | 382 | 111 038 |
| 2002 | 113 059 | 344 | 113 403 |
| 2003 | 114 235 | 298 | 114 533 |
| 2004 | 114 418 | 270 | 114 688 |
| 2005 | 114 239 | 239 | 114 478 |
| 2006 | 112 882 | 222 | 113 104 |
| 2007 | 110 590 | 198 | 110 788 |
| 2008 | 108 023 | 193 | 108 216 |
| 2009 | 104 760 | 201 | 104 961 |
| 2010 | 101 090 | 190 | 101 280 |
| 2011 | 96 761 | 187 | 96 948 |
| September 2008 | 106 914 | 195 | 107 109 |
| December 2008 | 106 273 | 203 | 106 476 |
| March 2009 | 105 488 | 201 | 105 689 |
| June 2009 | 104 760 | 201 | 104 961 |
| September 2009 | 103 840 | 200 | 104 040 |
| December 2009 | 103 022 | 196 | 103 218 |
| March 2010 | 102 075 | 194 | 102 269 |
| June 2010 | 101 090 | 190 | 101 280 |
| September 2010 | 99 982 | 192 | 100 174 |
| December 2010 | 98 989 | 194 | 99 183 |
| March 2011 | 97 881 | 192 | 98 073 |
| June 2011 | 96 761 | 187 | 96 948 |
| September 2011 | 95 317 | 178 | 95 495 |

Note: The source of data for this time series changed from February 1999. The source before February 1999 was IMS SAS jobs which read the Client Data Base (CDB) and the Payment Master File (PMF).

Since February 1999 the source is the DVA Ad hoc Information System, which reads extracts from the CDB.

Due to system changes data from April to August 2000 was unavailable. June 2000 data was estimated.

**Table 04: ISS Recipients
Yearly and Quarterly Time Series**

| | Income Support Supplement |
|-------------------------|--------------------------------------|
| At end June 2001 | 79 491 |
| 2002 | 83 741 |
| 2003 | 86 443 |
| 2004 | 88 269 |
| 2005 | 88 493 |
| 2006 | 87 003 |
| 2007 | 84 471 |
| 2008 | 82 550 |
| 2009 | 80 521 |
| 2010 | 77 584 |
| 2011 | 73 970 |
| September 2008 | 81 830 |
| December 2008 | 81 465 |
| March 2009 | 80 968 |
| June 2009 | 80 521 |
| September 2009 | 79 900 |
| December 2009 | 79 286 |
| March 2010 | 78 322 |
| June 2010 | 77 584 |
| September 2010 | 76 674 |
| December 2010 | 75 864 |
| March 2011 | 74 920 |
| June 2011 | 73 970 |
| September 2011 | 72 750 |

**Table 04A: Social Security Age Pensioners
Yearly and Quarterly Time Series**

| | Social Security Age Pension |
|-------------------------|--|
| At end June 2001 | 7 872 |
| 2002 | 7 462 |
| 2003 | 7 095 |
| 2004 | 6 663 |
| 2005 | 6 526 |
| 2006 | 6 385 |
| 2007 | 6 068 |
| 2008 | 5 896 |
| 2009 | 5 572 |
| 2010 | 5 167 |
| 2011 | 4 779 |
| September 2008 | 5 783 |
| December 2008 | 5 755 |
| March 2009 | 5 676 |
| June 2009 | 5 572 |
| September 2009 | 5 474 |
| December 2009 | 5 389 |
| March 2010 | 5 278 |
| June 2010 | 5 167 |
| September 2010 | 5 076 |
| December 2010 | 4 956 |
| March 2011 | 4 830 |
| June 2011 | 4 779 |
| September 2011 | 4 685 |

Note: The source of data for this time series changed from February 1999. The source before February 1999 was IMS SAS jobs which read the Client Data Base (CDB) and the Payment Master File (PMF). Since February 1999 the source is the DVA Ad hoc Information System, which reads extracts from the CDB.

Due to system changes data from April to August 2000 was unavailable. June 2000 data was estimated.

Table 05: Veteran Service Pensioners by Conflict and State - September 2011

| | NSW | VIC | QLD | SA | WA | TAS | NT | ACT | O'seas | Total |
|-----------------------------------|------------|------------|------------|-----------|-----------|------------|-----------|------------|---------------|--------------|
| Second World War | 10 730 | 7 690 | 6 450 | 2 921 | 2 705 | 1 370 | 37 | 259 | 27 | 32 189 |
| Korea and Malayan Forces | 1 833 | 856 | 1 441 | 328 | 504 | 180 | 23 | 60 | 21 | 5 246 |
| Far East Strategic Reserve | 889 | 393 | 768 | 224 | 360 | 80 | 28 | 60 | 9 | 2 811 |
| Vietnam | 7 852 | 4 884 | 9 926 | 2 774 | 3 454 | 1 182 | 180 | 442 | 168 | 30 862 |
| British Commonwealth | 2 006 | 1 535 | 1 616 | 1 229 | 1 233 | 210 | 19 | 60 | 168 | 8 076 |
| Allied Veterans | 2 689 | 1 726 | 492 | 392 | 404 | 40 | 12 | 59 | 94 | 5 908 |
| British Commonwealth & | | | | | | | | | | |
| Allied Mariners | 156 | 81 | 94 | 54 | 70 | 15 | 3 | 4 | 6 | 483 |
| Australian Mariners | 234 | 73 | 111 | 44 | 53 | 19 | 1 | 4 | 1 | 540 |
| Gulf War | 27 | 7 | 13 | 1 | 5 | 1 | 0 | 1 | 2 | 57 |
| East Timor | 56 | 34 | 114 | 10 | 12 | 9 | 4 | 1 | 1 | 241 |
| Other Post 1972 Conflicts | 46 | 29 | 81 | 8 | 17 | 11 | 0 | 3 | 2 | 197 |
| Unknown | 35 | 24 | 48 | 9 | 10 | 3 | 2 | 7 | 0 | 138 |
| All Wars and Conflicts | 26 553 | 17 332 | 21 154 | 7 994 | 8 827 | 3 120 | 309 | 960 | 499 | 86 748 |

Note: Conflict has been determined using SP Entitlement code. Please see Conflict Groupings note on first page.
Source: DVA Ad hoc Information System.

Table 06: Veteran Service Pensioners by Conflict and Age Group - September 2011

| | Under 55 | 55 to 59 | 60 to 64 | 65 to 69 | 70 to 74 | 75 to 79 | 80 to 84 | 85 to 89 | 90 or over | Total | Ave Age |
|---|----------|----------|----------|----------|----------|----------|----------|----------|------------|--------|---------|
| Second World War | 0 | 0 | 0 | 0 | 0 | 0 | 530 | 20 952 | 10 707 | 32 189 | 88.7 |
| Korea and Malayan Forces | 0 | 0 | 15 | 122 | 459 | 1 928 | 2 323 | 373 | 26 | 5 246 | 79.3 |
| Far East Strategic Reserve | 0 | 0 | 80 | 484 | 1 220 | 703 | 288 | 32 | 4 | 2 811 | 73.2 |
| Vietnam | 78 | 435 | 13 008 | 11 416 | 3 620 | 1 446 | 719 | 129 | 11 | 30 862 | 66.2 |
| British Commonwealth | 0 | 0 | 50 | 184 | 252 | 785 | 807 | 4 291 | 1 707 | 8 076 | 85.4 |
| Allied Veterans | 1 | 425 | 1 655 | 1 325 | 739 | 379 | 425 | 626 | 333 | 5 908 | 70.8 |
| British Commonwealth & Allied Mariners | 0 | 0 | 0 | 0 | 0 | 0 | 147 | 278 | 58 | 483 | 86.1 |
| Australian Mariners | 0 | 0 | 1 | 2 | 0 | 0 | 176 | 252 | 109 | 540 | 86.4 |
| Gulf War | 39 | 5 | 12 | 1 | 0 | 0 | 0 | 0 | 0 | 57 | 50.2 |
| East Timor | 194 | 22 | 21 | 4 | 0 | 0 | 0 | 0 | 0 | 241 | 45.3 |
| Other Post 1972 Conflicts | 142 | 24 | 27 | 4 | 0 | 0 | 0 | 0 | 0 | 197 | 48.8 |
| Unknown | 1 | 5 | 22 | 44 | 35 | 14 | 16 | 1 | 0 | 138 | 69.6 |
| All Wars and Conflicts | 455 | 916 | 14 891 | 13 586 | 6 325 | 5 255 | 5 431 | 26 934 | 12 955 | 86 748 | 77.8 |

Note: Conflict has been determined using SP Entitlement code. Please see Conflict Groupings note on first page.
Source: DVA Ad hoc Information System.

Table 07: Income Support Beneficiaries by State, Benefit Entitlement and Age Group - September 2011

| Total | Under 55 | 55 to 59 | 60 to 64 | 65 to 69 | 70 to 74 | 75 to 79 | 80 to 84 | 85 to 89 | 90 or over | Total | Ave Age |
|---------------------------------------|-----------------|-----------------|-----------------|-----------------|-----------------|-----------------|-----------------|-----------------|-------------------|--------------|----------------|
| Old Age | 0 | 2 | 4 023 | 13 586 | 6 325 | 5 255 | 5 429 | 26 920 | 12 948 | 74 488 | 80.5 |
| Permanently Incapacitated | | | | | | | | | | | |
| Under Pension Age | 455 | 914 | 10 868 | 0 | 0 | 0 | 0 | 0 | 0 | 12 237 | 61.6 |
| Tuberculosis | 0 | 0 | 0 | 0 | 0 | 0 | 2 | 14 | 7 | 23 | 88.0 |
| Total Veterans | 455 | 916 | 14 891 | 13 586 | 6 325 | 5 255 | 5 431 | 26 934 | 12 955 | 86 748 | 77.8 |
| Female Veterans | | | | | | | | | | | |
| (Included Above) | 18 | 6 | 22 | 34 | 22 | 16 | 26 | 376 | 274 | 794 | 85.7 |
| Partners/Widows | 2 211 | 4 714 | 11 999 | 7 848 | 6 156 | 7 205 | 14 938 | 16 574 | 5 700 | 77 345 | 75.5 |
| Total Service Pensioners | 2 666 | 5 630 | 26 890 | 21 434 | 12 481 | 12 460 | 20 369 | 43 508 | 18 655 | 164 093 | 76.7 |
| Income Support Supplement | 270 | 438 | 1 107 | 1 737 | 2 861 | 6 178 | 19 661 | 26 674 | 13 824 | 72 750 | 84.2 |
| Social Security Age Pensioners | 2 | 3 | 19 | 275 | 310 | 350 | 1 304 | 1 840 | 582 | 4 685 | 83.2 |
| Commonwealth Seniors Health | | | | | | | | | | | |
| Card holders | 0 | 1 | 545 | 927 | 492 | 495 | 1 122 | 2 243 | 1 018 | 6 843 | 80.5 |
| Net Total Income Support | 2 938 | 6 072 | 28 561 | 24 373 | 16 144 | 19 483 | 42 456 | 74 265 | 34 079 | 248 371 | 79.1 |
| New South Wales | | | | | | | | | | | |
| | Under 55 | 55 to 59 | 60 to 64 | 65 to 69 | 70 to 74 | 75 to 79 | 80 to 84 | 85 to 89 | 90 or over | Total | Ave Age |
| Old Age | 0 | 1 | 1 070 | 3 687 | 1 764 | 1 597 | 1 832 | 8 831 | 4 119 | 22 901 | 81.2 |
| Permanently Incapacitated | | | | | | | | | | | |
| Under Pension Age | 104 | 439 | 3 102 | 0 | 0 | 0 | 0 | 0 | 0 | 3 645 | 61.5 |
| Tuberculosis | 0 | 0 | 0 | 0 | 0 | 0 | 1 | 1 | 5 | 7 | 89.1 |
| Total Veterans | 104 | 440 | 4 172 | 3 687 | 1 764 | 1 597 | 1 833 | 8 832 | 4 124 | 26 553 | 78.5 |
| Female Veterans | | | | | | | | | | | |
| (Included Above) | 1 | 2 | 12 | 8 | 11 | 6 | 11 | 63 | 66 | 180 | 84.9 |
| Partners/Widows | 629 | 1 417 | 3 294 | 2 109 | 1 789 | 2 183 | 4 540 | 5 163 | 1 698 | 22 822 | 75.9 |
| Total Service Pensioners | 733 | 1 857 | 7 466 | 5 796 | 3 553 | 3 780 | 6 373 | 13 995 | 5 822 | 49 375 | 77.3 |
| Income Support Supplement | 86 | 137 | 344 | 560 | 941 | 2 256 | 7 041 | 9 643 | 4 870 | 25 878 | 84.3 |
| Social Security Age Pensioners | 2 | 2 | 5 | 61 | 72 | 104 | 477 | 674 | 198 | 1 595 | 83.9 |
| Commonwealth Seniors Health | | | | | | | | | | | |
| Card holders | 0 | 0 | 130 | 229 | 122 | 156 | 346 | 679 | 317 | 1 979 | 81.4 |
| Net Total Income Support | 821 | 1 996 | 7 945 | 6 646 | 4 688 | 6 296 | 14 237 | 24 991 | 11 207 | 78 827 | 79.8 |

Note: Column Totals may include unknown ages.
Source: DVA Ad hoc Information System.

Table 07: Income Support Beneficiaries by State, Benefit Entitlement and Age Group - September 2011

| Victoria | Under 55 | 55 to 59 | 60 to 64 | 65 to 69 | 70 to 74 | 75 to 79 | 80 to 84 | 85 to 89 | 90 or over | Total | Ave Age |
|---------------------------------------|-----------------|-----------------|-----------------|-----------------|-----------------|-----------------|-----------------|-----------------|-------------------|--------------|----------------|
| Old Age | 0 | 1 | 1 056 | 2 443 | 951 | 805 | 962 | 6 186 | 3 042 | 15 446 | 81.3 |
| Permanently Incapacitated | | | | | | | | | | | |
| Under Pension Age | 65 | 96 | 1 720 | 0 | 0 | 0 | 0 | 0 | 0 | 1 881 | 61.7 |
| Tuberculosis | 0 | 0 | 0 | 0 | 0 | 0 | 0 | 5 | 0 | 5 | 87.2 |
| Total Veterans | 65 | 97 | 2 776 | 2 443 | 951 | 805 | 962 | 6 191 | 3 042 | 17 332 | 79.2 |
| Female Veterans | | | | | | | | | | | |
| (Included Above) | 1 | 1 | 5 | 5 | 3 | 2 | 3 | 56 | 48 | 124 | 86.6 |
| Partners/Widows | 293 | 832 | 2 229 | 1 310 | 980 | 1 414 | 3 390 | 3 918 | 1 336 | 15 702 | 77.0 |
| Total Service Pensioners | 358 | 929 | 5 005 | 3 753 | 1 931 | 2 219 | 4 352 | 10 109 | 4 378 | 33 034 | 78.2 |
| Income Support Supplement | 45 | 69 | 194 | 283 | 512 | 1 247 | 4 742 | 6 559 | 3 514 | 17 165 | 84.8 |
| Social Security Age Pensioners | 0 | 0 | 1 | 41 | 44 | 61 | 315 | 456 | 161 | 1 079 | 84.4 |
| Commonwealth Seniors Health | | | | | | | | | | | |
| Card holders | 0 | 0 | 112 | 167 | 66 | 81 | 259 | 545 | 284 | 1 514 | 81.9 |
| Net Total Income Support | 403 | 998 | 5 312 | 4 244 | 2 553 | 3 608 | 9 668 | 17 669 | 8 337 | 52 792 | 80.6 |
| Queensland | | | | | | | | | | | |
| | Under 55 | 55 to 59 | 60 to 64 | 65 to 69 | 70 to 74 | 75 to 79 | 80 to 84 | 85 to 89 | 90 or over | Total | Ave Age |
| Old Age | 0 | 0 | 913 | 4 038 | 2 067 | 1 530 | 1 197 | 5 208 | 2 719 | 17 672 | 78.8 |
| Permanently Incapacitated | | | | | | | | | | | |
| Under Pension Age | 195 | 193 | 3 085 | 0 | 0 | 0 | 0 | 0 | 0 | 3 473 | 61.3 |
| Tuberculosis | 0 | 0 | 0 | 0 | 0 | 0 | 1 | 6 | 2 | 9 | 87.6 |
| Total Veterans | 195 | 193 | 3 998 | 4 038 | 2 067 | 1 530 | 1 198 | 5 214 | 2 721 | 21 154 | 76.0 |
| Female Veterans | | | | | | | | | | | |
| (Included Above) | 11 | 1 | 2 | 8 | 3 | 5 | 6 | 54 | 52 | 142 | 83.2 |
| Partners/Widows | 701 | 1 246 | 3 359 | 2 457 | 1 727 | 1 583 | 2 827 | 2 915 | 1 104 | 17 919 | 73.2 |
| Total Service Pensioners | 896 | 1 439 | 7 357 | 6 495 | 3 794 | 3 113 | 4 025 | 8 129 | 3 825 | 39 073 | 74.7 |
| Income Support Supplement | 87 | 134 | 337 | 530 | 810 | 1 485 | 4 164 | 5 360 | 2 725 | 15 632 | 83.3 |
| Social Security Age Pensioners | 0 | 0 | 3 | 102 | 110 | 101 | 237 | 372 | 119 | 1 044 | 81.9 |
| Commonwealth Seniors Health | | | | | | | | | | | |
| Card holders | 0 | 1 | 131 | 247 | 136 | 102 | 186 | 331 | 141 | 1 275 | 78.0 |
| Net Total Income Support | 983 | 1 574 | 7 828 | 7 374 | 4 850 | 4 801 | 8 612 | 14 192 | 6 810 | 57 024 | 77.2 |

Note: Column Totals may include unknown ages.
Source: DVA Ad hoc Information System.

Table 07: Income Support Beneficiaries by State, Benefit Entitlement and Age Group - September 2011

South Australia

| | Under 55 | 55 to 59 | 60 to 64 | 65 to 69 | 70 to 74 | 75 to 79 | 80 to 84 | 85 to 89 | 90 or over | Total | Ave Age |
|---------------------------------------|----------|----------|----------|----------|----------|----------|----------|----------|------------|--------|---------|
| Old Age | 0 | 0 | 383 | 1 199 | 407 | 382 | 449 | 2 690 | 1 283 | 6 793 | 81.2 |
| Permanently Incapacitated | | | | | | | | | | | |
| Under Pension Age | 18 | 84 | 1 099 | 0 | 0 | 0 | 0 | 0 | 0 | 1 201 | 61.9 |
| Tuberculosis | 0 | 0 | 0 | 0 | 0 | 0 | 0 | 0 | 0 | 0 | |
| Total Veterans | 18 | 84 | 1 482 | 1 199 | 407 | 382 | 449 | 2 690 | 1 283 | 7 994 | 78.3 |
| Female Veterans | | | | | | | | | | | |
| (Included Above) | 1 | 0 | 1 | 2 | 1 | 1 | 2 | 21 | 23 | 52 | 87.0 |
| Partners/Widows | 194 | 456 | 1 184 | 656 | 479 | 683 | 1 603 | 1 932 | 648 | 7 835 | 76.5 |
| Total Service Pensioners | 212 | 540 | 2 666 | 1 855 | 886 | 1 065 | 2 052 | 4 622 | 1 931 | 15 829 | 77.4 |
| Income Support Supplement | 19 | 32 | 87 | 131 | 191 | 385 | 1 561 | 2 375 | 1 204 | 5 985 | 84.7 |
| Social Security Age Pensioners | 0 | 1 | 3 | 21 | 19 | 31 | 97 | 178 | 58 | 408 | 83.7 |
| Commonwealth Seniors Health | | | | | | | | | | | |
| Card holders | 0 | 0 | 53 | 77 | 28 | 33 | 97 | 237 | 85 | 610 | 81.1 |
| Net Total Income Support | 231 | 573 | 2 809 | 2 084 | 1 124 | 1 514 | 3 807 | 7 412 | 3 278 | 22 832 | 79.5 |

Western Australia

| | Under 55 | 55 to 59 | 60 to 64 | 65 to 69 | 70 to 74 | 75 to 79 | 80 to 84 | 85 to 89 | 90 or over | Total | Ave Age |
|---------------------------------------|----------|----------|----------|----------|----------|----------|----------|----------|------------|--------|---------|
| Old Age | 0 | 0 | 355 | 1 460 | 750 | 666 | 619 | 2 503 | 1 153 | 7 506 | 79.8 |
| Permanently Incapacitated | | | | | | | | | | | |
| Under Pension Age | 44 | 56 | 1 221 | 0 | 0 | 0 | 0 | 0 | 0 | 1 321 | 61.8 |
| Tuberculosis | 0 | 0 | 0 | 0 | 0 | 0 | 0 | 0 | 0 | 0 | |
| Total Veterans | 44 | 56 | 1 576 | 1 460 | 750 | 666 | 619 | 2 503 | 1 153 | 8 827 | 77.1 |
| Female Veterans | | | | | | | | | | | |
| (Included Above) | 0 | 1 | 2 | 4 | 4 | 1 | 2 | 54 | 48 | 116 | 87.6 |
| Partners/Widows | 246 | 505 | 1 287 | 858 | 782 | 896 | 1 719 | 1 794 | 637 | 8 724 | 75.6 |
| Total Service Pensioners | 290 | 561 | 2 863 | 2 318 | 1 532 | 1 562 | 2 338 | 4 297 | 1 790 | 17 551 | 76.4 |
| Income Support Supplement | 20 | 41 | 88 | 131 | 237 | 449 | 1 312 | 1 710 | 1 004 | 4 992 | 83.9 |
| Social Security Age Pensioners | 0 | 0 | 5 | 37 | 45 | 32 | 117 | 137 | 36 | 409 | 81.6 |
| Commonwealth Seniors Health | | | | | | | | | | | |
| Card holders | 0 | 0 | 91 | 117 | 79 | 79 | 179 | 341 | 147 | 1 033 | 80.6 |
| Net Total Income Support | 310 | 602 | 3 047 | 2 603 | 1 893 | 2 122 | 3 946 | 6 485 | 2 977 | 23 985 | 78.2 |

Note: Column Totals may include unknown ages.
Source: DVA Ad hoc Information System.

Table 07: Income Support Beneficiaries by State, Benefit Entitlement and Age Group - September 2011

| Tasmania | | | | | | | | | | | |
|---------------------------------------|-----------------|-----------------|-----------------|-----------------|-----------------|-----------------|-----------------|-----------------|-------------------|--------------|----------------|
| | Under 55 | 55 to 59 | 60 to 64 | 65 to 69 | 70 to 74 | 75 to 79 | 80 to 84 | 85 to 89 | 90 or over | Total | Ave Age |
| Old Age | 0 | 0 | 142 | 461 | 181 | 134 | 213 | 1 065 | 461 | 2 657 | 81.0 |
| Permanently Incapacitated | | | | | | | | | | | |
| Under Pension Age | 16 | 26 | 419 | 0 | 0 | 0 | 0 | 0 | 0 | 461 | 61.8 |
| Tuberculosis | 0 | 0 | 0 | 0 | 0 | 0 | 0 | 2 | 0 | 2 | 87.5 |
| Total Veterans | 16 | 26 | 561 | 461 | 181 | 134 | 213 | 1 067 | 461 | 3 120 | 78.2 |
| Female Veterans | | | | | | | | | | | |
| (Included Above) | 2 | 0 | 0 | 5 | 0 | 0 | 1 | 123 | 34 | 165 | 87.2 |
| Partners/Widows | 89 | 189 | 430 | 252 | 222 | 261 | 579 | 571 | 176 | 2 769 | 75.2 |
| Total Service Pensioners | 105 | 215 | 991 | 713 | 403 | 395 | 792 | 1 638 | 637 | 5 889 | 76.8 |
| Income Support Supplement | 5 | 15 | 44 | 72 | 136 | 280 | 683 | 819 | 388 | 2 442 | 83.2 |
| Social Security Age Pensioners | 0 | 0 | 2 | 6 | 12 | 14 | 39 | 19 | 8 | 100 | 80.5 |
| Commonwealth Seniors Health | | | | | | | | | | | |
| Card holders | 0 | 0 | 7 | 16 | 9 | 13 | 20 | 50 | 25 | 140 | 82.1 |
| Net Total Income Support | 110 | 230 | 1 044 | 807 | 560 | 702 | 1 534 | 2 526 | 1 058 | 8 571 | 78.8 |
| Northern Territory | | | | | | | | | | | |
| | Under 55 | 55 to 59 | 60 to 64 | 65 to 69 | 70 to 74 | 75 to 79 | 80 to 84 | 85 to 89 | 90 or over | Total | Ave Age |
| Old Age | 0 | 0 | 38 | 70 | 44 | 18 | 20 | 38 | 14 | 242 | 73.5 |
| Permanently Incapacitated | | | | | | | | | | | |
| Under Pension Age | 3 | 8 | 56 | 0 | 0 | 0 | 0 | 0 | 0 | 67 | 60.8 |
| Tuberculosis | 0 | 0 | 0 | 0 | 0 | 0 | 0 | 0 | 0 | 0 | |
| Total Veterans | 3 | 8 | 94 | 70 | 44 | 18 | 20 | 38 | 14 | 309 | 70.8 |
| Female Veterans | | | | | | | | | | | |
| (Included Above) | 1 | 1 | 0 | 0 | 0 | 0 | 0 | 1 | 2 | 5 | 73.6 |
| Partners/Widows | 16 | 18 | 45 | 34 | 25 | 15 | 23 | 20 | 1 | 197 | 68.7 |
| Total Service Pensioners | 19 | 26 | 139 | 104 | 69 | 33 | 43 | 58 | 15 | 506 | 69.9 |
| Income Support Supplement | 3 | 2 | 3 | 12 | 10 | 10 | 15 | 17 | 8 | 80 | 77.2 |
| Social Security Age Pensioners | 0 | 0 | 0 | 3 | 1 | 0 | 4 | 0 | 0 | 8 | 74.9 |
| Commonwealth Seniors Health | | | | | | | | | | | |
| Card holders | 0 | 0 | 4 | 5 | 2 | 5 | 5 | 4 | 2 | 27 | 75.9 |
| Net Total Income Support | 22 | 28 | 146 | 124 | 82 | 48 | 67 | 79 | 25 | 621 | 71.2 |

Note: Column Totals may include unknown ages.
Source: DVA Ad hoc Information System.

Table 07: Income Support Beneficiaries by State, Benefit Entitlement and Age Group - September 2011

Australian Capital Territory

| | Under 55 | 55 to 59 | 60 to 64 | 65 to 69 | 70 to 74 | 75 to 79 | 80 to 84 | 85 to 89 | 90 or over | Total | Ave Age |
|---------------------------------------|----------|----------|----------|----------|----------|----------|----------|----------|------------|-------|---------|
| Old Age | 0 | 0 | 51 | 170 | 124 | 93 | 88 | 243 | 91 | 860 | 78.3 |
| Permanently Incapacitated | | | | | | | | | | | |
| Under Pension Age | 3 | 5 | 92 | 0 | 0 | 0 | 0 | 0 | 0 | 100 | 61.9 |
| Tuberculosis | 0 | 0 | 0 | 0 | 0 | 0 | 0 | 0 | 0 | 0 | |
| Total Veterans | 3 | 5 | 143 | 170 | 124 | 93 | 88 | 243 | 91 | 960 | 76.6 |
| Female Veterans | | | | | | | | | | | |
| (Included Above) | 0 | 0 | 0 | 2 | 0 | 1 | 1 | 3 | 0 | 7 | 79.6 |
| Partners/Widows | 20 | 40 | 141 | 137 | 99 | 118 | 162 | 151 | 51 | 919 | 74.6 |
| Total Service Pensioners | 23 | 45 | 284 | 307 | 223 | 211 | 250 | 394 | 142 | 1 879 | 75.6 |
| Income Support Supplement | 3 | 5 | 8 | 13 | 17 | 58 | 135 | 180 | 103 | 522 | 83.9 |
| Social Security Age Pensioners | 0 | 0 | 0 | 4 | 5 | 7 | 16 | 4 | 2 | 38 | 79.4 |
| Commonwealth Seniors Health | | | | | | | | | | | |
| Card holders | 0 | 0 | 17 | 69 | 50 | 26 | 30 | 55 | 17 | 264 | 76.1 |
| Net Total Income Support | 26 | 50 | 309 | 393 | 295 | 302 | 431 | 633 | 264 | 2 703 | 77.3 |

Overseas

| | Under 55 | 55 to 59 | 60 to 64 | 65 to 69 | 70 to 74 | 75 to 79 | 80 to 84 | 85 to 89 | 90 or over | Total | Ave Age |
|---------------------------------------|----------|----------|----------|----------|----------|----------|----------|----------|------------|-------|---------|
| Old Age | 0 | 0 | 15 | 58 | 37 | 30 | 49 | 156 | 66 | 411 | 81.2 |
| Permanently Incapacitated | | | | | | | | | | | |
| Under Pension Age | 7 | 7 | 74 | 0 | 0 | 0 | 0 | 0 | 0 | 88 | 60.6 |
| Tuberculosis | 0 | 0 | 0 | 0 | 0 | 0 | 0 | 0 | 0 | 0 | |
| Total Veterans | 7 | 7 | 89 | 58 | 37 | 30 | 49 | 156 | 66 | 499 | 77.6 |
| Female Veterans | | | | | | | | | | | |
| (Included Above) | 1 | 0 | 0 | 0 | 0 | 0 | 0 | 1 | 1 | 3 | 74.7 |
| Partners/Widows | 23 | 11 | 30 | 35 | 53 | 52 | 95 | 110 | 49 | 458 | 77.8 |
| Total Service Pensioners | 30 | 18 | 119 | 93 | 90 | 82 | 144 | 266 | 115 | 957 | 77.7 |
| Income Support Supplement | 2 | 3 | 2 | 5 | 7 | 8 | 8 | 11 | 8 | 54 | 78.2 |
| Social Security Age Pensioners | 0 | 0 | 0 | 0 | 2 | 0 | 2 | 0 | 0 | 4 | 77.5 |
| Commonwealth Seniors Health | | | | | | | | | | | |
| Card holders | 0 | 0 | 0 | 0 | 0 | 0 | 0 | 1 | 0 | 1 | 88.0 |
| Net Total Income Support | 32 | 21 | 121 | 98 | 99 | 90 | 154 | 278 | 123 | 1 016 | 77.7 |

Note: Column Totals may include unknown ages.
Source: DVA Ad hoc Information System.

Table 08: Service Pensioners by Rate, Rate Level and State - September 2011

| | | | NSW | VIC | QLD | SA | WA | TAS | NT | ACT | O'seas | Total | |
|----------------|---------------------|---------------------|----------|----------|----------|----------|----------|----------|----------|----------|----------|----------|----------|
| Married | Less than | Persons | 12 352 | 8 445 | 12 703 | 3 784 | 5 024 | 1 571 | 152 | 1 067 | 216 | 45 314 | |
| | Maximum | Ave' payment | \$344.63 | \$345.78 | \$343.00 | \$348.50 | \$347.00 | \$352.48 | \$334.30 | \$241.73 | \$380.49 | \$342.96 | |
| | Maximum | Persons | 18 396 | 11 271 | 13 522 | 5 586 | 5 892 | 2 027 | 141 | 278 | 174 | 57 287 | |
| | | Ave' payment | \$519.46 | \$519.43 | \$519.42 | \$519.46 | \$519.63 | \$519.40 | \$519.40 | \$519.40 | \$519.40 | \$526.22 | \$519.48 |
| | Total | Persons | 30 748 | 19 716 | 26 225 | 9 370 | 10 916 | 3 598 | 293 | 1 345 | 390 | 102 601 | |
| | | Ave' payment | \$449.23 | \$445.05 | \$433.97 | \$450.42 | \$440.18 | \$446.52 | \$423.38 | \$299.13 | \$445.51 | \$441.52 | |
| Single | Less than | Persons | 6 786 | 5 317 | 4 859 | 2 461 | 2 743 | 913 | 82 | 293 | 289 | 23 743 | |
| | Maximum | Ave' payment | \$493.14 | \$493.88 | \$483.18 | \$498.80 | \$478.29 | \$472.50 | \$422.94 | \$378.00 | \$533.84 | \$488.18 | |
| | Maximum | Persons | 11 833 | 7 993 | 7 976 | 3 992 | 3 886 | 1 378 | 131 | 241 | 278 | 37 708 | |
| | | Ave' payment | \$689.00 | \$689.00 | \$689.00 | \$689.00 | \$689.00 | \$689.00 | \$689.00 | \$689.00 | \$689.00 | \$689.00 | \$689.00 |
| | Total | Persons | 18 619 | 13 310 | 12 835 | 6 453 | 6 629 | 2 291 | 213 | 534 | 567 | 61 451 | |
| | | Ave' payment | \$617.62 | \$611.06 | \$611.08 | \$616.46 | \$601.81 | \$602.72 | \$586.57 | \$518.36 | \$609.91 | \$611.41 | |
| Other | Fixed Rate | Persons | 8 | 8 | 13 | 6 | 6 | 0 | 0 | 0 | 0 | 41 | |
| | | Ave' payment | \$23.59 | \$28.33 | \$25.82 | \$28.90 | \$31.78 | | | | | \$27.20 | |
| Total | Less than | Persons | 19 138 | 13 762 | 17 562 | 6 245 | 7 767 | 2 484 | 234 | 1 360 | 505 | 69 057 | |
| | Maximum | Ave' payment | \$397.29 | \$403.00 | \$381.78 | \$407.73 | \$393.37 | \$396.59 | \$365.36 | \$271.09 | \$468.25 | \$392.89 | |
| | Maximum | Persons | 30 229 | 19 264 | 21 498 | 9 578 | 9 778 | 3 405 | 272 | 519 | 452 | 94 995 | |
| | | Ave' payment | \$585.83 | \$589.79 | \$582.34 | \$590.12 | \$586.94 | \$588.04 | \$601.08 | \$598.15 | \$626.34 | \$586.77 | |
| | Fixed Rate | Persons | 8 | 8 | 13 | 6 | 6 | 0 | 0 | 0 | 0 | 41 | |
| | | Ave' payment | \$23.59 | \$28.33 | \$25.82 | \$28.90 | \$31.78 | | | | | \$27.20 | |
| Total | Persons | 49 375 | 33 034 | 39 073 | 15 829 | 17 551 | 5 889 | 506 | 1 879 | 957 | 164 093 | | |
| | Ave' payment | \$512.66 | \$511.83 | \$492.01 | \$517.95 | \$501.09 | \$507.29 | \$492.07 | \$361.43 | \$542.91 | \$505.04 | | |

Source: DVA Ad hoc Information System.

Table 09: Disability Pensioners by Rate and State - September 2011

| | | NSW | VIC | QLD | SA | WA | TAS | NT | ACT | O'seas | Total |
|---------------------|---------------------|--------|--------|--------|-------|--------|-------|-----|-------|--------|---------|
| General Rate | 010 | 2 074 | 1 418 | 2 203 | 602 | 792 | 170 | 82 | 447 | 68 | 7 856 |
| | 015 | 41 | 37 | 15 | 21 | 29 | 2 | 2 | 1 | 4 | 152 |
| | 020 | 1 870 | 1 346 | 2 200 | 591 | 716 | 193 | 80 | 324 | 70 | 7 390 |
| | 025 | 29 | 17 | 7 | 6 | 11 | 3 | 0 | 4 | 1 | 78 |
| | 030 | 2 304 | 1 636 | 2 604 | 661 | 952 | 268 | 95 | 414 | 72 | 9 006 |
| | 035 | 5 | 5 | 2 | 1 | 1 | 1 | 0 | 0 | 0 | 15 |
| | 040 | 2 455 | 1 690 | 2 688 | 634 | 852 | 290 | 78 | 328 | 64 | 9 079 |
| | 045 | 1 | 2 | 0 | 0 | 1 | 0 | 0 | 0 | 0 | 4 |
| | 050 | 1 867 | 1 304 | 1 794 | 423 | 589 | 232 | 55 | 225 | 55 | 6 544 |
| | 055 | 1 | 0 | 0 | 1 | 2 | 0 | 0 | 0 | 0 | 4 |
| | 060 | 1 768 | 1 207 | 1 704 | 406 | 573 | 188 | 49 | 196 | 42 | 6 133 |
| | 065 | 0 | 1 | 0 | 0 | 0 | 0 | 0 | 0 | 0 | 1 |
| | 070 | 1 225 | 794 | 1 143 | 295 | 342 | 124 | 42 | 94 | 25 | 4 084 |
| | 075 | 3 | 1 | 2 | 2 | 2 | 0 | 0 | 0 | 0 | 10 |
| | 080 | 1 541 | 963 | 1 286 | 315 | 434 | 143 | 30 | 143 | 35 | 4 890 |
| | 085 | 0 | 0 | 1 | 0 | 2 | 0 | 0 | 0 | 0 | 3 |
| | 090 | 1 518 | 751 | 1 438 | 308 | 501 | 165 | 50 | 108 | 44 | 4 883 |
| | 095 | 0 | 0 | 0 | 0 | 0 | 0 | 0 | 0 | 0 | 0 |
| | 100 | 5 003 | 2 994 | 3 617 | 943 | 1 358 | 405 | 65 | 290 | 62 | 14 737 |
| | EDA | 3 593 | 2 694 | 2 366 | 539 | 434 | 186 | 9 | 73 | 18 | 9 912 |
| Total | | 25 298 | 16 860 | 23 070 | 5 748 | 7 591 | 2 370 | 637 | 2 647 | 560 | 84 781 |
| Intermediate | Intermediate | 241 | 113 | 230 | 74 | 75 | 23 | 4 | 14 | 11 | 785 |
| | Total | 241 | 113 | 230 | 74 | 75 | 23 | 4 | 14 | 11 | 785 |
| Special Rate | Blind | 185 | 96 | 114 | 19 | 32 | 15 | 2 | 3 | 3 | 469 |
| | TPI | 7 862 | 4 336 | 8 986 | 2 360 | 3 178 | 1 195 | 146 | 395 | 207 | 28 665 |
| | TTI | 11 | 11 | 34 | 9 | 4 | 5 | 1 | 1 | 1 | 77 |
| | Total | 8 058 | 4 443 | 9 134 | 2 388 | 3 214 | 1 215 | 149 | 399 | 211 | 29 211 |
| Grand Total | | 33 597 | 21 416 | 32 434 | 8 210 | 10 880 | 3 608 | 790 | 3 060 | 782 | 114 777 |

Source: DVA Ad hoc Information System.

Table 10: Disability Pensioners by Rate and Conflict - September 2011

| | | Second World War | Korea, Malaya & FESR | Vietnam | Gulf War | East Timor | Afghan-istan | War in Iraq (2003) | Other Operations | Peace-keeping Forces | Serving Member | Not Stated | All Wars |
|----------------------|----------------------|------------------|----------------------|---------|----------|------------|--------------|--------------------|------------------|----------------------|----------------|------------|----------|
| General Rate | 010 | 2 029 | 387 | 969 | 46 | 213 | 19 | 8 | 38 | 53 | 4 071 | 23 | 7 856 |
| | 015 | 136 | 4 | 8 | 0 | 0 | 0 | 0 | 0 | 0 | 4 | 0 | 152 |
| | 020 | 2 020 | 546 | 890 | 38 | 183 | 20 | 8 | 37 | 54 | 3 576 | 18 | 7 390 |
| | 025 | 68 | 5 | 2 | 0 | 0 | 0 | 0 | 0 | 0 | 3 | 0 | 78 |
| | 030 | 2 574 | 688 | 1 009 | 44 | 262 | 28 | 11 | 49 | 63 | 4 260 | 18 | 9 006 |
| | 035 | 15 | 0 | 0 | 0 | 0 | 0 | 0 | 0 | 0 | 0 | 0 | 15 |
| | 040 | 3 098 | 841 | 1 178 | 47 | 286 | 30 | 16 | 63 | 69 | 3 440 | 11 | 9 079 |
| | 045 | 3 | 1 | 0 | 0 | 0 | 0 | 0 | 0 | 0 | 0 | 0 | 4 |
| | 050 | 2 470 | 571 | 859 | 31 | 161 | 17 | 12 | 50 | 65 | 2 305 | 3 | 6 544 |
| | 055 | 4 | 0 | 0 | 0 | 0 | 0 | 0 | 0 | 0 | 0 | 0 | 4 |
| | 060 | 2 163 | 561 | 1 022 | 39 | 157 | 12 | 7 | 58 | 56 | 2 050 | 8 | 6 133 |
| | 065 | 1 | 0 | 0 | 0 | 0 | 0 | 0 | 0 | 0 | 0 | 0 | 1 |
| | 070 | 1 713 | 384 | 677 | 18 | 101 | 12 | 1 | 46 | 37 | 1 093 | 2 | 4 084 |
| | 075 | 8 | 0 | 0 | 0 | 0 | 0 | 0 | 0 | 0 | 2 | 0 | 10 |
| | 080 | 2 233 | 483 | 851 | 16 | 135 | 15 | 4 | 53 | 40 | 1 052 | 8 | 4 890 |
| | 085 | 2 | 1 | 0 | 0 | 0 | 0 | 0 | 0 | 0 | 0 | 0 | 3 |
| | 090 | 2 076 | 525 | 1 084 | 27 | 138 | 12 | 7 | 40 | 39 | 932 | 3 | 4 883 |
| | 095 | 0 | 0 | 0 | 0 | 0 | 0 | 0 | 0 | 0 | 0 | 0 | 0 |
| | 100 | 7 628 | 1 686 | 2 800 | 62 | 200 | 20 | 14 | 93 | 94 | 2 026 | 114 | 14 737 |
| | EDA | 8 105 | 1 320 | 411 | 0 | 0 | 0 | 0 | 0 | 5 | 63 | 8 | 9 912 |
| Total | 36 346 | 8 003 | 11 760 | 368 | 1 836 | 185 | 88 | 527 | 575 | 24 877 | 216 | 84 781 | |
| Inter-mediate | Inter-mediate | 135 | 59 | 307 | 3 | 15 | 2 | 0 | 7 | 7 | 250 | 0 | 785 |
| | Total | 135 | 59 | 307 | 3 | 15 | 2 | 0 | 7 | 7 | 250 | 0 | 785 |
| Special Rate | Blind | 428 | 23 | 14 | 0 | 0 | 0 | 0 | 0 | 0 | 4 | 0 | 469 |
| | TPI | 2 098 | 2 230 | 20 353 | 73 | 367 | 19 | 5 | 236 | 183 | 3 084 | 17 | 28 665 |
| | TTI | 0 | 0 | 13 | 4 | 28 | 1 | 2 | 4 | 2 | 23 | 0 | 77 |
| Total | 2 526 | 2 253 | 20 380 | 77 | 395 | 20 | 7 | 240 | 185 | 3 111 | 17 | 29 211 | |
| Grand Total | | 39 007 | 10 315 | 32 447 | 448 | 2 246 | 207 | 95 | 774 | 767 | 28 238 | 233 | 114 777 |

Note: Conflict has been determined using earliest accepted disability conflict. Please see Conflict Groupings note on first page.
Source: DVA Ad hoc Information System.

Table 11: Disability Pensioners by Conflict, Rate Group and State - September 2011

| | NSW | VIC | QLD | SA | WA | TAS | NT | ACT | O'seas | Total | |
|------------------------------|---------------------------------|------------------------------|-------|-------|-------|-------|-------|-----|--------|-------|--------|
| Second World War | General Rate - 10-45% | 3 267 | 2 426 | 1 781 | 960 | 970 | 272 | 12 | 203 | 52 | 9 943 |
| | General Rate - 50-95% | 3 914 | 2 577 | 2 062 | 800 | 796 | 338 | 9 | 119 | 55 | 10 670 |
| | General Rate - 100% | 2 996 | 1 846 | 1 401 | 485 | 569 | 219 | 6 | 93 | 13 | 7 628 |
| | General Rate - EDA | 3 017 | 2 351 | 1 743 | 454 | 330 | 145 | 5 | 53 | 7 | 8 105 |
| | Intermediate | 77 | 25 | 15 | 10 | 3 | 3 | 0 | 1 | 1 | 135 |
| | Special Rate | 1 046 | 487 | 459 | 131 | 150 | 204 | 4 | 36 | 9 | 2 526 |
| | Total | 14 317 | 9 712 | 7 461 | 2 840 | 2 818 | 1 181 | 36 | 505 | 137 | 39 007 |
| | Korea, Malaya & FESR | General Rate - 10-45% | 676 | 373 | 719 | 163 | 326 | 82 | 13 | 103 | 17 |
| General Rate - 50-95% | | 745 | 346 | 836 | 127 | 258 | 109 | 12 | 75 | 17 | 2 525 |
| General Rate - 100% | | 553 | 215 | 505 | 106 | 199 | 56 | 3 | 38 | 11 | 1 686 |
| General Rate - EDA | | 460 | 244 | 417 | 58 | 82 | 35 | 2 | 15 | 7 | 1 320 |
| Intermediate | | 24 | 6 | 15 | 7 | 3 | 2 | 1 | 0 | 1 | 59 |
| Special Rate | | 639 | 253 | 749 | 152 | 319 | 69 | 13 | 43 | 16 | 2 253 |
| Total | | 3 097 | 1 437 | 3 241 | 613 | 1 187 | 353 | 44 | 274 | 69 | 10 315 |

Note: Conflict has been determined using earliest accepted disability conflict. Please see Conflict Groupings note on first page.
Source: DVA Ad hoc Information System.

Table 11: Disability Pensioners by Conflict, Rate Group and State - September 2011

| | NSW | VIC | QLD | SA | WA | TAS | NT | ACT | O'seas | Total |
|-----------------------|--------------|--------------|--------------|--------------|--------------|--------------|------------|------------|------------|---------------|
| Vietnam | | | | | | | | | | |
| General Rate - 10-45% | 934 | 846 | 1 185 | 316 | 367 | 121 | 29 | 211 | 47 | 4 056 |
| General Rate - 50-95% | 1 179 | 874 | 1 296 | 357 | 392 | 141 | 44 | 160 | 50 | 4 493 |
| General Rate - 100% | 785 | 569 | 826 | 188 | 243 | 68 | 23 | 77 | 21 | 2 800 |
| General Rate - EDA | 100 | 85 | 169 | 23 | 20 | 5 | 1 | 4 | 4 | 411 |
| Intermediate | 84 | 57 | 86 | 24 | 38 | 5 | 3 | 7 | 3 | 307 |
| Special Rate | 5 479 | 3 248 | 6 252 | 1 843 | 2 267 | 786 | 97 | 256 | 152 | 20 380 |
| Total | 8 561 | 5 679 | 9 814 | 2 751 | 3 327 | 1 126 | 197 | 715 | 277 | 32 447 |
| Gulf War | | | | | | | | | | |
| General Rate - 10-45% | 71 | 26 | 30 | 9 | 19 | 6 | 2 | 10 | 2 | 175 |
| General Rate - 50-95% | 46 | 13 | 38 | 4 | 13 | 3 | 4 | 9 | 1 | 131 |
| General Rate - 100% | 20 | 7 | 8 | 0 | 17 | 4 | 1 | 5 | 0 | 62 |
| General Rate - EDA | 0 | 0 | 0 | 0 | 0 | 0 | 0 | 0 | 0 | 0 |
| Intermediate | 0 | 0 | 1 | 0 | 0 | 1 | 0 | 0 | 1 | 3 |
| Special Rate | 36 | 9 | 18 | 1 | 6 | 1 | 0 | 3 | 3 | 77 |
| Total | 173 | 55 | 95 | 14 | 55 | 15 | 7 | 27 | 7 | 448 |

Note: Conflict has been determined using earliest accepted disability conflict. Please see Conflict Groupings note on first page.
Source: DVA Ad hoc Information System.

Table 11: Disability Pensioners by Conflict, Rate Group and State - September 2011

| | NSW | VIC | QLD | SA | WA | TAS | NT | ACT | O'seas | Total | |
|------------------------------|------------------------------|-----|-----|-----|----|-----|----|-----|--------|-------|-------|
| East Timor | General Rate - 10-45% | 187 | 121 | 410 | 21 | 87 | 35 | 23 | 49 | 11 | 944 |
| | General Rate - 50-95% | 135 | 78 | 296 | 26 | 75 | 23 | 20 | 32 | 7 | 692 |
| | General Rate - 100% | 42 | 22 | 79 | 7 | 29 | 3 | 6 | 9 | 3 | 200 |
| | General Rate - EDA | 0 | 0 | 0 | 0 | 0 | 0 | 0 | 0 | 0 | 0 |
| | Intermediate | 3 | 1 | 7 | 1 | 1 | 0 | 0 | 1 | 1 | 15 |
| | Special Rate | 76 | 50 | 199 | 23 | 25 | 11 | 3 | 4 | 4 | 395 |
| | Total | 443 | 272 | 991 | 78 | 217 | 72 | 52 | 95 | 26 | 2 246 |
| | Afghanistan | | | | | | | | | | |
| General Rate - 10-45% | 28 | 7 | 20 | 2 | 22 | 5 | 2 | 10 | 1 | 97 | |
| General Rate - 50-95% | 19 | 7 | 16 | 1 | 21 | 1 | 0 | 2 | 1 | 68 | |
| General Rate - 100% | 6 | 1 | 5 | 1 | 3 | 0 | 1 | 3 | 0 | 20 | |
| General Rate - EDA | 0 | 0 | 0 | 0 | 0 | 0 | 0 | 0 | 0 | 0 | |
| Intermediate | 1 | 0 | 0 | 0 | 1 | 0 | 0 | 0 | 0 | 2 | |
| Special Rate | 7 | 3 | 2 | 1 | 7 | 0 | 0 | 0 | 0 | 20 | |
| Total | 61 | 18 | 43 | 5 | 54 | 6 | 3 | 15 | 2 | 207 | |

Note: Conflict has been determined using earliest accepted disability conflict. Please see Conflict Groupings note on first page.
Source: DVA Ad hoc Information System.

Table 11: Disability Pensioners by Conflict, Rate Group and State - September 2011

| | NSW | VIC | QLD | SA | WA | TAS | NT | ACT | O'seas | Total | |
|----------------------------------|----------------------------------|-----|-----|----|----|-----|----|-----|--------|-------|----|
| War in Iraq (2003) | General Rate - 10-45% | 14 | 8 | 13 | 2 | 2 | 1 | 0 | 3 | 0 | 43 |
| | General Rate - 50-95% | 10 | 4 | 7 | 2 | 4 | 0 | 0 | 4 | 0 | 31 |
| | General Rate - 100% | 2 | 4 | 6 | 2 | 0 | 0 | 0 | 0 | 0 | 14 |
| | General Rate - EDA | 0 | 0 | 0 | 0 | 0 | 0 | 0 | 0 | 0 | 0 |
| | Intermediate | 0 | 0 | 0 | 0 | 0 | 0 | 0 | 0 | 0 | 0 |
| | Special Rate | 2 | 1 | 2 | 1 | 1 | 0 | 0 | 0 | 0 | 7 |
| | Total | 28 | 17 | 28 | 7 | 7 | 1 | 0 | 7 | 0 | 95 |
| | Other Operations | | | | | | | | | | |
| General Rate - 10-45% | 39 | 36 | 70 | 10 | 13 | 3 | 2 | 11 | 3 | 187 | |
| General Rate - 50-95% | 45 | 43 | 95 | 8 | 30 | 5 | 6 | 15 | 0 | 247 | |
| General Rate - 100% | 20 | 18 | 34 | 3 | 8 | 2 | 2 | 4 | 2 | 93 | |
| General Rate - EDA | 0 | 0 | 0 | 0 | 0 | 0 | 0 | 0 | 0 | 0 | |
| Intermediate | 0 | 0 | 3 | 1 | 2 | 1 | 0 | 0 | 0 | 7 | |
| Special Rate | 37 | 35 | 114 | 7 | 24 | 10 | 2 | 4 | 7 | 240 | |
| Total | 141 | 132 | 316 | 29 | 77 | 21 | 12 | 34 | 12 | 774 | |

Note: Conflict has been determined using earliest accepted disability conflict. Please see Conflict Groupings note on first page.
Source: DVA Ad hoc Information System.

Table 11: Disability Pensioners by Conflict, Rate Group and State - September 2011

| | NSW | VIC | QLD | SA | WA | TAS | NT | ACT | O'seas | Total | | |
|----------------------------|------------------------------|------------------------------|-------|--------|-------|-------|-------|-----|--------|-------|--------|--------|
| Peacekeeping Forces | General Rate - 10-45% | 56 | 38 | 99 | 8 | 11 | 5 | 4 | 14 | 4 | 239 | |
| | General Rate - 50-95% | 56 | 31 | 94 | 7 | 18 | 7 | 3 | 16 | 5 | 237 | |
| | General Rate - 100% | 28 | 9 | 25 | 5 | 14 | 3 | 2 | 7 | 1 | 94 | |
| | General Rate - EDA | 1 | 1 | 0 | 3 | 0 | 0 | 0 | 0 | 0 | 5 | |
| | Intermediate | 0 | 0 | 6 | 1 | 0 | 0 | 0 | 0 | 0 | 7 | |
| | Special Rate | 34 | 26 | 76 | 11 | 18 | 8 | 3 | 9 | 0 | 185 | |
| | Total | 175 | 105 | 300 | 35 | 61 | 23 | 12 | 46 | 10 | 767 | |
| | Serving Member | General Rate - 10-45% | 3 497 | 2 245 | 5 377 | 1 020 | 1 529 | 395 | 249 | 901 | 141 | 15 354 |
| | | General Rate - 50-95% | 1 770 | 1 044 | 2 622 | 415 | 836 | 225 | 128 | 329 | 65 | 7 434 |
| General Rate - 100% | | 524 | 278 | 703 | 124 | 269 | 45 | 21 | 52 | 10 | 2 026 | |
| General Rate - EDA | | 13 | 10 | 34 | 1 | 2 | 1 | 1 | 1 | 0 | 63 | |
| Intermediate | | 52 | 24 | 97 | 30 | 27 | 11 | 0 | 5 | 4 | 250 | |
| Special Rate | | 697 | 328 | 1 260 | 217 | 395 | 123 | 27 | 44 | 20 | 3 111 | |
| Total | | 6 553 | 3 929 | 10 093 | 1 807 | 3 058 | 800 | 426 | 1 332 | 240 | 28 238 | |

Note: Conflict has been determined using earliest accepted disability conflict. Please see Conflict Groupings note on first page.
Source: DVA Ad hoc Information System.

Table 11: Disability Pensioners by Conflict, Rate Group and State - September 2011

| | NSW | VIC | QLD | SA | WA | TAS | NT | ACT | O'seas | Total |
|-------------------------------|---------------|---------------|---------------|--------------|---------------|--------------|------------|--------------|------------|----------------|
| Not Stated | | | | | | | | | | |
| General Rate - 10-45% | 10 | 25 | 15 | 5 | 8 | 2 | 1 | 3 | 1 | 70 |
| General Rate - 50-95% | 4 | 4 | 6 | 3 | 2 | 0 | 0 | 5 | 0 | 24 |
| General Rate - 100% | 27 | 25 | 25 | 22 | 7 | 5 | 0 | 2 | 1 | 114 |
| General Rate - EDA | 2 | 3 | 3 | 0 | 0 | 0 | 0 | 0 | 0 | 8 |
| Intermediate | 0 | 0 | 0 | 0 | 0 | 0 | 0 | 0 | 0 | 0 |
| Special Rate | 5 | 3 | 3 | 1 | 2 | 3 | 0 | 0 | 0 | 17 |
| Total | 48 | 60 | 52 | 31 | 19 | 10 | 1 | 10 | 2 | 233 |
| All Wars and Conflicts | | | | | | | | | | |
| General Rate - 10-45% | 8 779 | 6 151 | 9 719 | 2 516 | 3 354 | 927 | 337 | 1 518 | 279 | 33 580 |
| General Rate - 50-95% | 7 923 | 5 021 | 7 368 | 1 750 | 2 445 | 852 | 226 | 766 | 201 | 26 552 |
| General Rate - 100% | 5 003 | 2 994 | 3 617 | 943 | 1 358 | 405 | 65 | 290 | 62 | 14 737 |
| General Rate - EDA | 3 593 | 2 694 | 2 366 | 539 | 434 | 186 | 9 | 73 | 18 | 9 912 |
| Intermediate | 241 | 113 | 230 | 74 | 75 | 23 | 4 | 14 | 11 | 785 |
| Special Rate | 8 058 | 4 443 | 9 134 | 2 388 | 3 214 | 1 215 | 149 | 399 | 211 | 29 211 |
| Total | 33 597 | 21 416 | 32 434 | 8 210 | 10 880 | 3 608 | 790 | 3 060 | 782 | 114 777 |

Note: Conflict has been determined using earliest accepted disability conflict. Please see Conflict Groupings note on first page.
Source: DVA Ad hoc Information System.

Table 12: Disability Pensioners by State, Age Group and Conflict - September 2011

| Total | | | | | | | | | | | | |
|--------------------|-------------------------|---------------------------------|----------------|-----------------|-------------------|--------------------|---------------------------|-------------------------|-----------------------------|-----------------------|-------------------|-----------------|
| | Second World War | Korea, Malaya & FESR | Vietnam | Gulf War | East Timor | Afghanistan | War in Iraq (2003) | Other Operations | Peace-keeping Forces | Serving Member | Not Stated | All Wars |
| Under 55 | 0 | 0 | 29 | 399 | 2 031 | 192 | 81 | 631 | 442 | 14 582 | 36 | 18 423 |
| 55 to 59 | 0 | 0 | 811 | 34 | 145 | 13 | 11 | 102 | 121 | 6 111 | 8 | 7 356 |
| 60 to 64 | 0 | 352 | 16 037 | 12 | 54 | 2 | 3 | 31 | 97 | 4 204 | 12 | 20 804 |
| 65 to 69 | 0 | 2 118 | 11 567 | 1 | 14 | 0 | 0 | 9 | 56 | 1 736 | 7 | 15 508 |
| 70 to 74 | 0 | 2 744 | 2 542 | 2 | 2 | 0 | 0 | 0 | 31 | 921 | 14 | 6 256 |
| 75 to 79 | 0 | 2 760 | 974 | 0 | 0 | 0 | 0 | 1 | 12 | 436 | 26 | 4 209 |
| 80 to 84 | 2 937 | 2 099 | 412 | 0 | 0 | 0 | 0 | 0 | 6 | 200 | 48 | 5 702 |
| 85 to 89 | 24 606 | 221 | 70 | 0 | 0 | 0 | 0 | 0 | 1 | 44 | 66 | 25 008 |
| 90 or over | 11 464 | 21 | 5 | 0 | 0 | 0 | 0 | 0 | 1 | 4 | 16 | 11 511 |
| Unknown | 0 | 0 | 0 | 0 | 0 | 0 | 0 | 0 | 0 | 0 | 0 | 0 |
| Total | 39 007 | 10 315 | 32 447 | 448 | 2 246 | 207 | 95 | 774 | 767 | 28 238 | 233 | 114 777 |
| Average Age | 88.2 | 74.3 | 65.2 | 47.0 | 43.1 | 43.4 | 44.5 | 47.8 | 52.7 | 54.6 | 75.0 | 70.5 |

New South Wales

| | Second World War | Korea, Malaya & FESR | Vietnam | Gulf War | East Timor | Afghanistan | War in Iraq (2003) | Other Operations | Peace-keeping Forces | Serving Member | Not Stated | All Wars |
|--------------------|-------------------------|---------------------------------|----------------|-----------------|-------------------|--------------------|---------------------------|-------------------------|-----------------------------|-----------------------|-------------------|-----------------|
| Under 55 | 0 | 0 | 3 | 152 | 400 | 53 | 24 | 116 | 97 | 3 378 | 1 | 4 224 |
| 55 to 59 | 0 | 0 | 206 | 12 | 33 | 7 | 2 | 16 | 24 | 1 331 | 0 | 1 631 |
| 60 to 64 | 0 | 115 | 4 189 | 7 | 6 | 1 | 2 | 7 | 19 | 1 017 | 0 | 5 363 |
| 65 to 69 | 0 | 503 | 3 106 | 0 | 3 | 0 | 0 | 2 | 15 | 395 | 0 | 4 024 |
| 70 to 74 | 0 | 729 | 639 | 2 | 1 | 0 | 0 | 0 | 16 | 245 | 4 | 1 636 |
| 75 to 79 | 0 | 900 | 262 | 0 | 0 | 0 | 0 | 0 | 2 | 113 | 10 | 1 287 |
| 80 to 84 | 1 165 | 752 | 133 | 0 | 0 | 0 | 0 | 0 | 2 | 59 | 15 | 2 126 |
| 85 to 89 | 9 039 | 88 | 21 | 0 | 0 | 0 | 0 | 0 | 0 | 15 | 16 | 9 179 |
| 90 or over | 4 113 | 10 | 2 | 0 | 0 | 0 | 0 | 0 | 0 | 0 | 2 | 4 127 |
| Unknown | 0 | 0 | 0 | 0 | 0 | 0 | 0 | 0 | 0 | 0 | 0 | 0 |
| Total | 14 317 | 3 097 | 8 561 | 173 | 443 | 61 | 28 | 141 | 175 | 6 553 | 48 | 33 597 |
| Average Age | 88.2 | 75.2 | 65.2 | 48.1 | 43.4 | 43.6 | 42.6 | 48.0 | 53.8 | 54.8 | 81.1 | 73.3 |

Note: Conflict has been determined using earliest accepted disability conflict. Please see Conflict Groupings note on first page.
Source: DVA Ad hoc Information System.

Table 12: Disability Pensioners by State, Age Group and Conflict - September 2011

| Victoria | | | | | | | | | | | | |
|--------------------|------------------|----------------------|--------------|-------------|-------------|-------------|--------------------|------------------|----------------------|----------------|-------------|---------------|
| | Second World War | Korea, Malaya & FESR | Vietnam | Gulf War | East Timor | Afghanistan | War in Iraq (2003) | Other Operations | Peace-keeping Forces | Serving Member | Not Stated | All Wars |
| Under 55 | 0 | 0 | 1 | 50 | 246 | 18 | 14 | 118 | 64 | 2 088 | 11 | 2 610 |
| 55 to 59 | 0 | 0 | 102 | 5 | 20 | 0 | 3 | 12 | 10 | 908 | 3 | 1 063 |
| 60 to 64 | 0 | 39 | 2 883 | 0 | 6 | 0 | 0 | 1 | 17 | 521 | 7 | 3 474 |
| 65 to 69 | 0 | 266 | 2 136 | 0 | 0 | 0 | 0 | 1 | 8 | 223 | 4 | 2 638 |
| 70 to 74 | 0 | 358 | 349 | 0 | 0 | 0 | 0 | 0 | 4 | 103 | 1 | 815 |
| 75 to 79 | 0 | 396 | 125 | 0 | 0 | 0 | 0 | 0 | 1 | 50 | 6 | 578 |
| 80 to 84 | 650 | 344 | 71 | 0 | 0 | 0 | 0 | 0 | 0 | 29 | 8 | 1 102 |
| 85 to 89 | 6 168 | 32 | 11 | 0 | 0 | 0 | 0 | 0 | 0 | 7 | 15 | 6 233 |
| 90 or over | 2 894 | 2 | 1 | 0 | 0 | 0 | 0 | 0 | 1 | 0 | 5 | 2 903 |
| Unknown | 0 | 0 | 0 | 0 | 0 | 0 | 0 | 0 | 0 | 0 | 0 | 0 |
| Total | 9 712 | 1 437 | 5 679 | 55 | 272 | 18 | 17 | 132 | 105 | 3 929 | 60 | 21 416 |
| Average Age | 88.3 | 74.8 | 65.0 | 46.0 | 42.6 | 41.7 | 44.2 | 46.5 | 52.1 | 54.2 | 72.7 | 73.7 |

| Queensland | | | | | | | | | | | | |
|--------------------|------------------|----------------------|--------------|-------------|-------------|-------------|--------------------|------------------|----------------------|----------------|-------------|---------------|
| | Second World War | Korea, Malaya & FESR | Vietnam | Gulf War | East Timor | Afghanistan | War in Iraq (2003) | Other Operations | Peace-keeping Forces | Serving Member | Not Stated | All Wars |
| Under 55 | 0 | 0 | 13 | 83 | 898 | 39 | 24 | 254 | 190 | 4 990 | 8 | 6 499 |
| 55 to 59 | 0 | 0 | 259 | 7 | 60 | 3 | 3 | 44 | 52 | 2 185 | 3 | 2 616 |
| 60 to 64 | 0 | 95 | 4 567 | 5 | 25 | 1 | 1 | 17 | 34 | 1 638 | 4 | 6 387 |
| 65 to 69 | 0 | 677 | 3 527 | 0 | 8 | 0 | 0 | 1 | 14 | 695 | 1 | 4 923 |
| 70 to 74 | 0 | 963 | 945 | 0 | 0 | 0 | 0 | 0 | 6 | 359 | 5 | 2 278 |
| 75 to 79 | 0 | 888 | 351 | 0 | 0 | 0 | 0 | 0 | 3 | 161 | 3 | 1 406 |
| 80 to 84 | 524 | 557 | 125 | 0 | 0 | 0 | 0 | 0 | 1 | 54 | 10 | 1 271 |
| 85 to 89 | 4 633 | 57 | 25 | 0 | 0 | 0 | 0 | 0 | 0 | 9 | 15 | 4 739 |
| 90 or over | 2 304 | 4 | 2 | 0 | 0 | 0 | 0 | 0 | 0 | 2 | 3 | 2 315 |
| Unknown | 0 | 0 | 0 | 0 | 0 | 0 | 0 | 0 | 0 | 0 | 0 | 0 |
| Total | 7 461 | 3 241 | 9 814 | 95 | 991 | 43 | 28 | 316 | 300 | 10 093 | 52 | 32 434 |
| Average Age | 88.3 | 74.0 | 65.4 | 46.9 | 43.1 | 42.6 | 45.7 | 47.9 | 51.0 | 54.9 | 73.9 | 67.2 |

Note: Conflict has been determined using earliest accepted disability conflict. Please see Conflict Groupings note on first page.
Source: DVA Ad hoc Information System.

Table 12: Disability Pensioners by State, Age Group and Conflict - September 2011

South Australia

| | Second World War | Korea, Malaya & FESR | Vietnam | Gulf War | East Timor | Afghanistan | War in Iraq (2003) | Other Operations | Peace-keeping Forces | Serving Member | Not Stated | All Wars |
|--------------------|------------------|----------------------|--------------|-------------|-------------|-------------|--------------------|------------------|----------------------|----------------|-------------|--------------|
| Under 55 | 0 | 0 | 3 | 11 | 66 | 3 | 6 | 22 | 14 | 936 | 3 | 1 064 |
| 55 to 59 | 0 | 0 | 88 | 3 | 8 | 2 | 1 | 6 | 7 | 451 | 2 | 568 |
| 60 to 64 | 0 | 33 | 1 502 | 0 | 3 | 0 | 0 | 1 | 3 | 246 | 0 | 1 788 |
| 65 to 69 | 0 | 199 | 939 | 0 | 1 | 0 | 0 | 0 | 6 | 96 | 0 | 1 241 |
| 70 to 74 | 0 | 156 | 147 | 0 | 0 | 0 | 0 | 0 | 0 | 45 | 1 | 349 |
| 75 to 79 | 0 | 125 | 54 | 0 | 0 | 0 | 0 | 0 | 4 | 19 | 2 | 204 |
| 80 to 84 | 193 | 86 | 14 | 0 | 0 | 0 | 0 | 0 | 0 | 12 | 5 | 310 |
| 85 to 89 | 1 828 | 13 | 4 | 0 | 0 | 0 | 0 | 0 | 1 | 1 | 12 | 1 859 |
| 90 or over | 819 | 1 | 0 | 0 | 0 | 0 | 0 | 0 | 0 | 1 | 6 | 827 |
| Unknown | 0 | 0 | 0 | 0 | 0 | 0 | 0 | 0 | 0 | 0 | 0 | 0 |
| Total | 2 840 | 613 | 2 751 | 14 | 78 | 5 | 7 | 29 | 35 | 1 807 | 31 | 8 210 |
| Average Age | 88.2 | 72.7 | 64.5 | 46.7 | 45.2 | 51.2 | 44.9 | 48.3 | 57.8 | 54.3 | 80.5 | 70.8 |

Western Australia

| | Second World War | Korea, Malaya & FESR | Vietnam | Gulf War | East Timor | Afghanistan | War in Iraq (2003) | Other Operations | Peace-keeping Forces | Serving Member | Not Stated | All Wars |
|--------------------|------------------|----------------------|--------------|-------------|-------------|-------------|--------------------|------------------|----------------------|----------------|-------------|---------------|
| Under 55 | 0 | 0 | 2 | 54 | 200 | 53 | 7 | 66 | 30 | 1 685 | 4 | 2 101 |
| 55 to 59 | 0 | 0 | 85 | 1 | 10 | 1 | 0 | 6 | 13 | 647 | 0 | 763 |
| 60 to 64 | 0 | 40 | 1 800 | 0 | 5 | 0 | 0 | 2 | 8 | 390 | 0 | 2 245 |
| 65 to 69 | 0 | 312 | 1 083 | 0 | 1 | 0 | 0 | 3 | 7 | 168 | 1 | 1 575 |
| 70 to 74 | 0 | 342 | 234 | 0 | 1 | 0 | 0 | 0 | 0 | 91 | 2 | 670 |
| 75 to 79 | 0 | 276 | 88 | 0 | 0 | 0 | 0 | 0 | 1 | 48 | 3 | 416 |
| 80 to 84 | 241 | 203 | 31 | 0 | 0 | 0 | 0 | 0 | 2 | 26 | 6 | 509 |
| 85 to 89 | 1 783 | 12 | 4 | 0 | 0 | 0 | 0 | 0 | 0 | 3 | 3 | 1 805 |
| 90 or over | 794 | 2 | 0 | 0 | 0 | 0 | 0 | 0 | 0 | 0 | 0 | 796 |
| Unknown | 0 | 0 | 0 | 0 | 0 | 0 | 0 | 0 | 0 | 0 | 0 | 0 |
| Total | 2 818 | 1 187 | 3 327 | 55 | 217 | 54 | 7 | 77 | 61 | 3 058 | 19 | 10 880 |
| Average Age | 88.2 | 73.3 | 64.9 | 44.1 | 42.1 | 43.3 | 42.3 | 46.4 | 54.6 | 54.1 | 71.8 | 67.9 |

Note: Conflict has been determined using earliest accepted disability conflict. Please see Conflict Groupings note on first page.
Source: DVA Ad hoc Information System.

Table 12: Disability Pensioners by State, Age Group and Conflict - September 2011

| Tasmania | | | | | | | | | | | | |
|--------------------|------------------|----------------------|--------------|-------------|-------------|-------------|--------------------|------------------|----------------------|----------------|-------------|--------------|
| | Second World War | Korea, Malaya & FESR | Vietnam | Gulf War | East Timor | Afghanistan | War in Iraq (2003) | Other Operations | Peace-keeping Forces | Serving Member | Not Stated | All Wars |
| Under 55 | 0 | 0 | 3 | 15 | 64 | 6 | 1 | 12 | 11 | 437 | 2 | 551 |
| 55 to 59 | 0 | 0 | 37 | 0 | 3 | 0 | 0 | 6 | 3 | 194 | 0 | 243 |
| 60 to 64 | 0 | 17 | 589 | 0 | 4 | 0 | 0 | 1 | 7 | 113 | 1 | 732 |
| 65 to 69 | 0 | 79 | 390 | 0 | 1 | 0 | 0 | 1 | 1 | 35 | 1 | 508 |
| 70 to 74 | 0 | 99 | 71 | 0 | 0 | 0 | 0 | 0 | 1 | 14 | 0 | 185 |
| 75 to 79 | 0 | 73 | 19 | 0 | 0 | 0 | 0 | 1 | 0 | 5 | 1 | 99 |
| 80 to 84 | 103 | 78 | 14 | 0 | 0 | 0 | 0 | 0 | 0 | 1 | 2 | 198 |
| 85 to 89 | 734 | 6 | 3 | 0 | 0 | 0 | 0 | 0 | 0 | 1 | 3 | 747 |
| 90 or over | 344 | 1 | 0 | 0 | 0 | 0 | 0 | 0 | 0 | 0 | 0 | 345 |
| Unknown | 0 | 0 | 0 | 0 | 0 | 0 | 0 | 0 | 0 | 0 | 0 | 0 |
| Total | 1 181 | 353 | 1 126 | 15 | 72 | 6 | 1 | 21 | 23 | 800 | 10 | 3 608 |
| Average Age | 88.1 | 73.9 | 64.7 | 44.9 | 43.5 | 38.3 | 50.0 | 51.9 | 53.4 | 53.3 | 72.7 | 70.1 |

| Northern Territory | | | | | | | | | | | | |
|--------------------|------------------|----------------------|-------------|-------------|-------------|-------------|--------------------|------------------|----------------------|----------------|-------------|-------------|
| | Second World War | Korea, Malaya & FESR | Vietnam | Gulf War | East Timor | Afghanistan | War in Iraq (2003) | Other Operations | Peace-keeping Forces | Serving Member | Not Stated | All Wars |
| Under 55 | 0 | 0 | 0 | 6 | 48 | 3 | 0 | 10 | 7 | 259 | 1 | 334 |
| 55 to 59 | 0 | 0 | 7 | 1 | 4 | 0 | 0 | 0 | 2 | 88 | 0 | 102 |
| 60 to 64 | 0 | 2 | 119 | 0 | 0 | 0 | 0 | 1 | 1 | 53 | 0 | 176 |
| 65 to 69 | 0 | 17 | 52 | 0 | 0 | 0 | 0 | 1 | 1 | 14 | 0 | 85 |
| 70 to 74 | 0 | 10 | 13 | 0 | 0 | 0 | 0 | 0 | 1 | 7 | 0 | 31 |
| 75 to 79 | 0 | 6 | 4 | 0 | 0 | 0 | 0 | 0 | 0 | 2 | 0 | 12 |
| 80 to 84 | 4 | 7 | 2 | 0 | 0 | 0 | 0 | 0 | 0 | 1 | 0 | 14 |
| 85 to 89 | 23 | 2 | 0 | 0 | 0 | 0 | 0 | 0 | 0 | 2 | 0 | 27 |
| 90 or over | 9 | 0 | 0 | 0 | 0 | 0 | 0 | 0 | 0 | 0 | 0 | 9 |
| Unknown | 0 | 0 | 0 | 0 | 0 | 0 | 0 | 0 | 0 | 0 | 0 | 0 |
| Total | 36 | 44 | 197 | 7 | 52 | 3 | 0 | 12 | 12 | 426 | 1 | 790 |
| Average Age | 87.8 | 72.5 | 64.3 | 48.7 | 42.1 | 48.7 | | 49.5 | 51.8 | 52.5 | 54.0 | 57.4 |

Note: Conflict has been determined using earliest accepted disability conflict. Please see Conflict Groupings note on first page.
Source: DVA Ad hoc Information System.

Table 12: Disability Pensioners by State, Age Group and Conflict - September 2011

Australian Capital Territory

| | Second World War | Korea, Malaya & FESR | Vietnam | Gulf War | East Timor | Afghanistan | War in Iraq (2003) | Other Operations | Peace-keeping Forces | Serving Member | Not Stated | All Wars |
|--------------------|------------------|----------------------|-------------|-------------|-------------|-------------|--------------------|------------------|----------------------|----------------|-------------|--------------|
| Under 55 | 0 | 0 | 2 | 22 | 86 | 15 | 5 | 26 | 25 | 669 | 5 | 855 |
| 55 to 59 | 0 | 0 | 19 | 4 | 5 | 0 | 2 | 7 | 8 | 256 | 0 | 301 |
| 60 to 64 | 0 | 10 | 252 | 0 | 4 | 0 | 0 | 1 | 6 | 198 | 0 | 471 |
| 65 to 69 | 0 | 51 | 247 | 1 | 0 | 0 | 0 | 0 | 3 | 98 | 0 | 400 |
| 70 to 74 | 0 | 69 | 112 | 0 | 0 | 0 | 0 | 0 | 2 | 53 | 1 | 237 |
| 75 to 79 | 0 | 79 | 62 | 0 | 0 | 0 | 0 | 0 | 1 | 35 | 1 | 178 |
| 80 to 84 | 44 | 57 | 19 | 0 | 0 | 0 | 0 | 0 | 1 | 17 | 2 | 140 |
| 85 to 89 | 321 | 8 | 2 | 0 | 0 | 0 | 0 | 0 | 0 | 5 | 1 | 337 |
| 90 or over | 140 | 0 | 0 | 0 | 0 | 0 | 0 | 0 | 0 | 1 | 0 | 141 |
| Unknown | 0 | 0 | 0 | 0 | 0 | 0 | 0 | 0 | 0 | 0 | 0 | 0 |
| Total | 505 | 274 | 715 | 27 | 95 | 15 | 7 | 34 | 46 | 1 332 | 10 | 3 060 |
| Average Age | 88.1 | 74.5 | 67.1 | 48.7 | 43.2 | 45.7 | 48.7 | 49.9 | 54.7 | 55.5 | 58.7 | 64.7 |

Overseas

| | Second World War | Korea, Malaya & FESR | Vietnam | Gulf War | East Timor | Afghanistan | War in Iraq (2003) | Other Operations | Peace-keeping Forces | Serving Member | Not Stated | All Wars |
|--------------------|------------------|----------------------|-------------|-------------|-------------|-------------|--------------------|------------------|----------------------|----------------|-------------|-------------|
| Under 55 | 0 | 0 | 2 | 6 | 23 | 2 | 0 | 7 | 4 | 140 | 1 | 185 |
| 55 to 59 | 0 | 0 | 8 | 1 | 2 | 0 | 0 | 5 | 2 | 51 | 0 | 69 |
| 60 to 64 | 0 | 1 | 136 | 0 | 1 | 0 | 0 | 0 | 2 | 28 | 0 | 168 |
| 65 to 69 | 0 | 14 | 87 | 0 | 0 | 0 | 0 | 0 | 1 | 12 | 0 | 114 |
| 70 to 74 | 0 | 18 | 32 | 0 | 0 | 0 | 0 | 0 | 1 | 4 | 0 | 55 |
| 75 to 79 | 0 | 17 | 9 | 0 | 0 | 0 | 0 | 0 | 0 | 3 | 0 | 29 |
| 80 to 84 | 13 | 15 | 3 | 0 | 0 | 0 | 0 | 0 | 0 | 1 | 0 | 32 |
| 85 to 89 | 77 | 3 | 0 | 0 | 0 | 0 | 0 | 0 | 0 | 1 | 1 | 82 |
| 90 or over | 47 | 1 | 0 | 0 | 0 | 0 | 0 | 0 | 0 | 0 | 0 | 48 |
| Unknown | 0 | 0 | 0 | 0 | 0 | 0 | 0 | 0 | 0 | 0 | 0 | 0 |
| Total | 137 | 69 | 277 | 7 | 26 | 2 | 0 | 12 | 10 | 240 | 2 | 782 |
| Average Age | 88.8 | 75.2 | 65.3 | 46.0 | 42.9 | 43.5 | | 51.1 | 53.7 | 53.4 | 70.0 | 65.3 |

Note: Conflict has been determined using earliest accepted disability conflict. Please see Conflict Groupings note on first page.
Source: DVA Ad hoc Information System.

Table 13: War Widow Pensioners by Age Group and State - September 2011

| | NSW | VIC | QLD | SA | WA | TAS | NT | ACT | O'seas | Total |
|--------------------|------------|------------|------------|-----------|-----------|------------|-----------|------------|---------------|--------------|
| Under 55 | 194 | 114 | 217 | 49 | 56 | 16 | 3 | 17 | 28 | 694 |
| 55 to 59 | 293 | 133 | 296 | 82 | 98 | 31 | 5 | 24 | 13 | 975 |
| 60 to 64 | 607 | 364 | 640 | 165 | 183 | 77 | 20 | 46 | 12 | 2 114 |
| 65 to 69 | 793 | 424 | 743 | 176 | 184 | 89 | 17 | 53 | 22 | 2 501 |
| 70 to 74 | 1 269 | 697 | 1 031 | 237 | 326 | 154 | 15 | 67 | 23 | 3 819 |
| 75 to 79 | 2 868 | 1 634 | 1 821 | 468 | 582 | 311 | 13 | 143 | 37 | 7 877 |
| 80 to 84 | 8 754 | 6 094 | 5 104 | 1 876 | 1 683 | 793 | 29 | 308 | 45 | 24 686 |
| 85 to 89 | 12 390 | 8 645 | 6 622 | 2 963 | 2 281 | 1 038 | 29 | 402 | 64 | 34 434 |
| 90 or over | 6 474 | 4 693 | 3 424 | 1 535 | 1 336 | 485 | 15 | 202 | 53 | 18 217 |
| Unknown | 0 | 0 | 0 | 0 | 0 | 0 | 0 | 0 | 0 | 0 |
| Total | 33 642 | 22 798 | 19 898 | 7 551 | 6 729 | 2 994 | 146 | 1 262 | 297 | 95 317 |
| Average Age | 84.0 | 84.6 | 82.6 | 84.3 | 83.4 | 83.1 | 76.6 | 82.0 | 77.1 | 83.7 |

Source: DVA Ad hoc Information System.

Table 14: War Widow Pensioners by Conflict and State - September 2011

| | NSW | VIC | QLD | SA | WA | TAS | NT | ACT | O'seas | Total |
|------------------------------------|------------|------------|------------|-----------|-----------|------------|-----------|------------|---------------|--------------|
| First World War | 73 | 65 | 50 | 16 | 17 | 11 | 1 | 0 | 4 | 237 |
| Second World War | 29 991 | 21 313 | 16 797 | 6 893 | 5 725 | 2 704 | 98 | 899 | 217 | 84 637 |
| Korea & Malaya Forces | 1 200 | 461 | 753 | 161 | 278 | 108 | 12 | 70 | 22 | 3 065 |
| Far East Strategic Reserve | 181 | 83 | 130 | 25 | 57 | 18 | 5 | 9 | 3 | 511 |
| Vietnam | 919 | 658 | 974 | 315 | 285 | 111 | 25 | 85 | 31 | 3 403 |
| Defence/Peacekeeping Forces | 957 | 122 | 1 070 | 89 | 323 | 27 | 3 | 195 | 16 | 2 802 |
| Seaman's War Pension | 319 | 96 | 124 | 51 | 44 | 15 | 2 | 4 | 4 | 659 |
| New Guinea Civilians | 2 | 0 | 0 | 0 | 0 | 0 | 0 | 0 | 0 | 2 |
| Gulf War | 0 | 0 | 0 | 1 | 0 | 0 | 0 | 0 | 0 | 1 |
| All Wars and Conflicts | 33 642 | 22 798 | 19 898 | 7 551 | 6 729 | 2 994 | 146 | 1 262 | 297 | 95 317 |

Note: Conflict has been determined using File Prefix.
Source: DVA Ad hoc Information System.

Table 15: Widows Receiving Income Support Supplement by Rate and State - September 2011

| | NSW | VIC | QLD | SA | WA | TAS | NT | ACT | O'seas | Total |
|---------------------------|------------|------------|------------|-----------|-----------|------------|-----------|------------|---------------|--------------|
| Less than \$226.80 | 2 579 | 1 898 | 1 794 | 594 | 575 | 254 | 14 | 106 | 16 | 7 830 |
| \$226.80 | 23 181 | 15 259 | 13 812 | 5 391 | 4 411 | 2 187 | 66 | 414 | 37 | 64 758 |
| More than \$226.80 | 118 | 8 | 26 | 0 | 6 | 1 | 0 | 2 | 1 | 162 |
| Total | 25 878 | 17 165 | 15 632 | 5 985 | 4 992 | 2 442 | 80 | 522 | 54 | 72 750 |
| Average Payment | \$219.73 | \$217.98 | \$218.20 | \$218.49 | \$217.76 | \$218.42 | \$218.21 | \$207.95 | \$198.59 | \$218.61 |

Source: DVA Ad hoc Information System.

Table 16: Orphan Pensioners by Age Group and State - September 2011

| | NSW | VIC | QLD | SA | WA | TAS | NT | ACT | O'seas | Total |
|--------------------|------------|------------|------------|-----------|-----------|------------|-----------|------------|---------------|--------------|
| Under 10 | 11 | 4 | 7 | 4 | 2 | 0 | 0 | 2 | 3 | 33 |
| 10 to 14 | 24 | 21 | 40 | 6 | 4 | 1 | 0 | 6 | 6 | 108 |
| 15 to 19 | 7 | 7 | 17 | 2 | 3 | 0 | 0 | 0 | 1 | 37 |
| 20 to 24 | 0 | 0 | 0 | 0 | 0 | 0 | 0 | 0 | 0 | 0 |
| 25 to 29 | 0 | 0 | 0 | 0 | 0 | 0 | 0 | 0 | 0 | 0 |
| Total | 42 | 32 | 64 | 12 | 9 | 1 | 0 | 8 | 10 | 178 |
| Average Age | 11.6 | 12.7 | 12.4 | 11.6 | 12.2 | 14.0 | | 11.5 | 10.8 | 12.0 |

Source: DVA Ad hoc Information System.

Table 17: Orphan Pensioners by Conflict and State - September 2011

| | NSW | VIC | QLD | SA | WA | TAS | NT | ACT | O'seas | Total |
|-------------------------------------|-----|-----|-----|----|----|-----|----|-----|--------|-------|
| Second World War | 5 | 4 | 5 | 2 | 0 | 0 | 0 | 0 | 2 | 18 |
| Korea and Malaya Forces | 0 | 4 | 0 | 1 | 0 | 0 | 0 | 0 | 1 | 6 |
| Far East Strategic reserve | 0 | 0 | 1 | 0 | 0 | 0 | 0 | 0 | 0 | 1 |
| Vietnam | 11 | 11 | 18 | 0 | 2 | 1 | 0 | 3 | 3 | 49 |
| Defence/ Peacekeeping Forces | 26 | 12 | 40 | 7 | 7 | 0 | 0 | 5 | 4 | 101 |
| Seaman's War Pension | 0 | 0 | 0 | 0 | 0 | 0 | 0 | 0 | 0 | 0 |
| New Guinea Civilians | 0 | 0 | 0 | 0 | 0 | 0 | 0 | 0 | 0 | 0 |
| Gulf War | 0 | 1 | 0 | 2 | 0 | 0 | 0 | 0 | 0 | 3 |
| All Wars and Conflicts | 42 | 32 | 64 | 12 | 9 | 1 | 0 | 8 | 10 | 178 |

Note: Conflict has been determined using File Prefix.
Source: DVA Ad hoc Information System.

Table 18: Disability Pensioners on Service Pension by Rate and State - September 2011

| | | NSW | VIC | QLD | SA | WA | TAS | NT | ACT | O'seas | Total |
|---------------------|---------------------|--------|--------|--------|-------|-------|-------|-----|-----|--------|--------|
| General Rate | 010 | 456 | 343 | 397 | 169 | 176 | 40 | 4 | 35 | 5 | 1 625 |
| | 015 | 16 | 19 | 7 | 9 | 15 | 1 | 0 | 0 | 1 | 68 |
| | 020 | 498 | 350 | 468 | 180 | 191 | 66 | 11 | 38 | 2 | 1 804 |
| | 025 | 14 | 7 | 2 | 3 | 4 | 0 | 0 | 1 | 0 | 31 |
| | 030 | 631 | 509 | 564 | 235 | 253 | 90 | 5 | 43 | 5 | 2 335 |
| | 035 | 2 | 3 | 2 | 1 | 1 | 1 | 0 | 0 | 0 | 10 |
| | 040 | 844 | 585 | 742 | 255 | 262 | 121 | 10 | 34 | 5 | 2 858 |
| | 045 | 0 | 0 | 0 | 0 | 1 | 0 | 0 | 0 | 0 | 1 |
| | 050 | 720 | 535 | 570 | 194 | 203 | 109 | 6 | 42 | 5 | 2 384 |
| | 055 | 0 | 0 | 0 | 0 | 1 | 0 | 0 | 0 | 0 | 1 |
| | 060 | 730 | 522 | 581 | 192 | 174 | 80 | 7 | 35 | 4 | 2 325 |
| | 065 | 0 | 1 | 0 | 0 | 0 | 0 | 0 | 0 | 0 | 1 |
| | 070 | 597 | 359 | 437 | 142 | 120 | 68 | 6 | 20 | 2 | 1 751 |
| | 075 | 2 | 0 | 0 | 1 | 1 | 0 | 0 | 0 | 0 | 4 |
| | 080 | 795 | 491 | 561 | 155 | 194 | 96 | 6 | 25 | 3 | 2 326 |
| | 085 | 0 | 0 | 1 | 0 | 2 | 0 | 0 | 0 | 0 | 3 |
| | 090 | 786 | 423 | 729 | 157 | 245 | 112 | 14 | 23 | 10 | 2 499 |
| | 095 | 0 | 0 | 0 | 0 | 0 | 0 | 0 | 0 | 0 | 0 |
| | 100 | 2 602 | 1 530 | 1 832 | 547 | 652 | 285 | 21 | 89 | 20 | 7 578 |
| | EDA | 2 743 | 1 934 | 1 835 | 414 | 364 | 165 | 7 | 48 | 9 | 7 519 |
| Total | 11 436 | 7 611 | 8 728 | 2 654 | 2 859 | 1 234 | 97 | 433 | 71 | 35 123 | |
| Intermediate | Intermediate | 119 | 55 | 77 | 26 | 20 | 6 | 3 | 4 | 1 | 311 |
| | Total | 119 | 55 | 77 | 26 | 20 | 6 | 3 | 4 | 1 | 311 |
| Special Rate | Blind | 134 | 73 | 86 | 14 | 26 | 15 | 1 | 2 | 1 | 352 |
| | TPI | 6 032 | 3 372 | 6 764 | 1 912 | 2 436 | 974 | 91 | 214 | 130 | 21 925 |
| | TTI | 1 | 1 | 1 | 3 | 0 | 0 | 0 | 0 | 0 | 6 |
| | Total | 6 167 | 3 446 | 6 851 | 1 929 | 2 462 | 989 | 92 | 216 | 131 | 22 283 |
| Grand Total | | 17 722 | 11 112 | 15 656 | 4 609 | 5 341 | 2 229 | 192 | 653 | 203 | 57 717 |

Source: DVA Ad hoc Information System.

Table 19: Disability Pensioners on Service Pension by Rate and Conflict - September 2011

| | | Second World War | Korea, Malaya & FESR | Vietnam | Gulf War | East Timor | Afghan-istan | War in Iraq (2003) | Other Operations | Peace-keeping Forces | Serving Member | Not Stated | All Wars |
|----------------------|----------------------|------------------|----------------------|---------|----------|------------|--------------|--------------------|------------------|----------------------|----------------|------------|----------|
| General Rate | 010 | 906 | 259 | 375 | 2 | 0 | 0 | 0 | 0 | 1 | 81 | 1 | 1 625 |
| | 015 | 64 | 3 | 0 | 0 | 0 | 0 | 0 | 0 | 0 | 1 | 0 | 68 |
| | 020 | 983 | 370 | 376 | 0 | 2 | 0 | 0 | 0 | 0 | 73 | 0 | 1 804 |
| | 025 | 26 | 4 | 1 | 0 | 0 | 0 | 0 | 0 | 0 | 0 | 0 | 31 |
| | 030 | 1 309 | 497 | 458 | 0 | 1 | 0 | 0 | 1 | 0 | 67 | 2 | 2 335 |
| | 035 | 10 | 0 | 0 | 0 | 0 | 0 | 0 | 0 | 0 | 0 | 0 | 10 |
| | 040 | 1 637 | 625 | 533 | 0 | 6 | 0 | 0 | 1 | 0 | 55 | 1 | 2 858 |
| | 045 | 0 | 1 | 0 | 0 | 0 | 0 | 0 | 0 | 0 | 0 | 0 | 1 |
| | 050 | 1 457 | 448 | 424 | 1 | 0 | 0 | 0 | 1 | 0 | 53 | 0 | 2 384 |
| | 055 | 1 | 0 | 0 | 0 | 0 | 0 | 0 | 0 | 0 | 0 | 0 | 1 |
| | 060 | 1 279 | 435 | 560 | 1 | 5 | 0 | 0 | 1 | 0 | 43 | 1 | 2 325 |
| | 065 | 1 | 0 | 0 | 0 | 0 | 0 | 0 | 0 | 0 | 0 | 0 | 1 |
| | 070 | 1 065 | 307 | 351 | 0 | 1 | 0 | 0 | 0 | 0 | 26 | 1 | 1 751 |
| | 075 | 4 | 0 | 0 | 0 | 0 | 0 | 0 | 0 | 0 | 0 | 0 | 4 |
| | 080 | 1 438 | 385 | 465 | 1 | 5 | 0 | 0 | 6 | 0 | 25 | 1 | 2 326 |
| | 085 | 2 | 1 | 0 | 0 | 0 | 0 | 0 | 0 | 0 | 0 | 0 | 3 |
| | 090 | 1 411 | 439 | 618 | 4 | 5 | 0 | 0 | 0 | 1 | 21 | 0 | 2 499 |
| | 095 | 0 | 0 | 0 | 0 | 0 | 0 | 0 | 0 | 0 | 0 | 0 | 0 |
| | 100 | 4 385 | 1 418 | 1 651 | 2 | 7 | 0 | 0 | 10 | 0 | 44 | 61 | 7 578 |
| | EDA | 5 943 | 1 210 | 360 | 0 | 0 | 0 | 0 | 0 | 0 | 5 | 1 | 7 519 |
| Total | | 21 921 | 6 402 | 6 172 | 11 | 32 | 0 | 0 | 20 | 2 | 494 | 69 | 35 123 |
| Inter-mediate | Inter-mediate | 91 | 46 | 164 | 0 | 2 | 0 | 0 | 1 | 0 | 7 | 0 | 311 |
| | Total | 91 | 46 | 164 | 0 | 2 | 0 | 0 | 1 | 0 | 7 | 0 | 311 |
| Special Rate | Blind | 318 | 20 | 14 | 0 | 0 | 0 | 0 | 0 | 0 | 0 | 0 | 352 |
| | TPI | 1 378 | 1 966 | 17 871 | 44 | 196 | 10 | 2 | 165 | 42 | 239 | 12 | 21 925 |
| | TTI | 0 | 0 | 6 | 0 | 0 | 0 | 0 | 0 | 0 | 0 | 0 | 6 |
| Total | | 1 696 | 1 986 | 17 891 | 44 | 196 | 10 | 2 | 165 | 42 | 239 | 12 | 22 283 |
| Grand Total | | 23 708 | 8 434 | 24 227 | 55 | 230 | 10 | 2 | 186 | 44 | 740 | 81 | 57 717 |

Note: Conflict has been determined using earliest accepted disability conflict. Please see Conflict Groupings note on first page.
Source: DVA Ad hoc Information System.

Table 20: Disability Pensioners on Service Pension by Conflict, Rate Group and State - September 2011

| | NSW | VIC | QLD | SA | WA | TAS | NT | ACT | O'seas | Total | |
|------------------------------|---------------------------------|------------------------------|-------|-------|-------|-------|-----|-----|--------|-------|--------|
| Second World War | General Rate - 10-45% | 1 531 | 1 156 | 970 | 531 | 487 | 180 | 5 | 69 | 6 | 4 935 |
| | General Rate - 50-95% | 2 389 | 1 578 | 1 323 | 515 | 518 | 270 | 7 | 51 | 7 | 6 658 |
| | General Rate - 100% | 1 671 | 1 024 | 815 | 310 | 342 | 179 | 4 | 38 | 2 | 4 385 |
| | General Rate - EDA | 2 227 | 1 636 | 1 305 | 335 | 270 | 131 | 4 | 33 | 2 | 5 943 |
| | Intermediate | 48 | 21 | 12 | 5 | 2 | 2 | 0 | 1 | 0 | 91 |
| | Special Rate | 674 | 306 | 323 | 89 | 104 | 178 | 2 | 16 | 4 | 1 696 |
| | Total | 8 540 | 5 721 | 4 748 | 1 785 | 1 723 | 940 | 22 | 208 | 21 | 23 708 |
| | Korea, Malaya & FESR | General Rate - 10-45% | 486 | 278 | 522 | 129 | 230 | 65 | 11 | 33 | 5 |
| General Rate - 50-95% | | 586 | 275 | 687 | 112 | 208 | 100 | 8 | 34 | 5 | 2 015 |
| General Rate - 100% | | 464 | 164 | 440 | 98 | 170 | 52 | 2 | 23 | 5 | 1 418 |
| General Rate - EDA | | 427 | 223 | 378 | 56 | 77 | 30 | 2 | 13 | 4 | 1 210 |
| Intermediate | | 19 | 5 | 12 | 6 | 3 | 1 | 0 | 0 | 0 | 46 |
| Special Rate | | 552 | 216 | 683 | 139 | 288 | 61 | 9 | 27 | 11 | 1 986 |
| Total | | 2 534 | 1 161 | 2 722 | 540 | 976 | 309 | 32 | 130 | 30 | 8 434 |

Note: Conflict has been determined using earliest accepted disability conflict. Please see Conflict Groupings note on first page.

Source: DVA Ad hoc Information System.

Table 20: Disability Pensioners on Service Pension by Conflict, Rate Group and State - September 2011

| | NSW | VIC | QLD | SA | WA | TAS | NT | ACT | O'seas | Total |
|--------------------------|--------------|--------------|--------------|--------------|--------------|------------|------------|------------|------------|---------------|
| Vietnam | | | | | | | | | | |
| General Rate - 10-45% | 371 | 357 | 571 | 171 | 156 | 63 | 12 | 37 | 5 | 1 743 |
| General Rate - 50-95% | 601 | 458 | 790 | 201 | 192 | 91 | 20 | 53 | 12 | 2 418 |
| General Rate - 100% | 435 | 318 | 540 | 129 | 128 | 51 | 14 | 24 | 12 | 1 651 |
| General Rate - EDA | 88 | 74 | 149 | 23 | 16 | 4 | 1 | 2 | 3 | 360 |
| Intermediate | 48 | 28 | 50 | 14 | 14 | 3 | 3 | 3 | 1 | 164 |
| Special Rate | 4 762 | 2 829 | 5 560 | 1 667 | 1 997 | 728 | 75 | 166 | 107 | 17 891 |
| Total | 6 305 | 4 064 | 7 660 | 2 205 | 2 503 | 940 | 125 | 285 | 140 | 24 227 |
| Gulf War | | | | | | | | | | |
| General Rate - 10-45% | 0 | 0 | 1 | 0 | 0 | 1 | 0 | 0 | 0 | 2 |
| General Rate - 50-95% | 3 | 1 | 2 | 0 | 0 | 0 | 0 | 1 | 0 | 7 |
| General Rate - 100% | 1 | 0 | 0 | 0 | 0 | 1 | 0 | 0 | 0 | 2 |
| General Rate - EDA | 0 | 0 | 0 | 0 | 0 | 0 | 0 | 0 | 0 | 0 |
| Intermediate | 0 | 0 | 0 | 0 | 0 | 0 | 0 | 0 | 0 | 0 |
| Special Rate | 18 | 6 | 11 | 1 | 5 | 0 | 0 | 0 | 3 | 44 |
| Total | 22 | 7 | 14 | 1 | 5 | 2 | 0 | 1 | 3 | 55 |

Note: Conflict has been determined using earliest accepted disability conflict. Please see Conflict Groupings note on first page.

Source: DVA Ad hoc Information System.

Table 20: Disability Pensioners on Service Pension by Conflict, Rate Group and State - September 2011

| | NSW | VIC | QLD | SA | WA | TAS | NT | ACT | O'seas | Total |
|---------------------|-----------------------|-----|-----|----|----|-----|----|-----|--------|-------|
| East Timor | General Rate - | | | | | | | | | |
| | 10-45% | 0 | 0 | 6 | 0 | 1 | 2 | 0 | 0 | 9 |
| | General Rate - | | | | | | | | | |
| | 50-95% | 3 | 2 | 7 | 1 | 2 | 1 | 0 | 0 | 16 |
| | General Rate - | | | | | | | | | |
| | 100% | 4 | 0 | 2 | 0 | 0 | 0 | 1 | 0 | 7 |
| | General Rate - | | | | | | | | | |
| | EDA | 0 | 0 | 0 | 0 | 0 | 0 | 0 | 0 | 0 |
| | Intermediate | 1 | 1 | 0 | 0 | 0 | 0 | 0 | 0 | 2 |
| Special Rate | 45 | 24 | 94 | 10 | 14 | 6 | 1 | 1 | 1 | 196 |
| Total | 53 | 27 | 109 | 11 | 17 | 9 | 2 | 1 | 1 | 230 |
| Afghanistan | General Rate - | | | | | | | | | |
| | 10-45% | 0 | 0 | 0 | 0 | 0 | 0 | 0 | 0 | 0 |
| | General Rate - | | | | | | | | | |
| | 50-95% | 0 | 0 | 0 | 0 | 0 | 0 | 0 | 0 | 0 |
| | General Rate - | | | | | | | | | |
| | 100% | 0 | 0 | 0 | 0 | 0 | 0 | 0 | 0 | 0 |
| | General Rate - | | | | | | | | | |
| | EDA | 0 | 0 | 0 | 0 | 0 | 0 | 0 | 0 | 0 |
| | Intermediate | 0 | 0 | 0 | 0 | 0 | 0 | 0 | 0 | 0 |
| Special Rate | 3 | 1 | 1 | 0 | 5 | 0 | 0 | 0 | 0 | 10 |
| Total | 3 | 1 | 1 | 0 | 5 | 0 | 0 | 0 | 0 | 10 |

Note: Conflict has been determined using earliest accepted disability conflict. Please see Conflict Groupings note on first page.

Source: DVA Ad hoc Information System.

Table 20: Disability Pensioners on Service Pension by Conflict, Rate Group and State - September 2011

| | NSW | VIC | QLD | SA | WA | TAS | NT | ACT | O'seas | Total | |
|--------------------------------|----------------------------------|----------------------------------|-----|----|----|-----|----|-----|--------|-------|---|
| War in Iraq (2003) | General Rate - 10-45% | 0 | 0 | 0 | 0 | 0 | 0 | 0 | 0 | 0 | |
| | General Rate - 50-95% | 0 | 0 | 0 | 0 | 0 | 0 | 0 | 0 | 0 | |
| | General Rate - 100% | 0 | 0 | 0 | 0 | 0 | 0 | 0 | 0 | 0 | |
| | General Rate - EDA | 0 | 0 | 0 | 0 | 0 | 0 | 0 | 0 | 0 | |
| | Intermediate | 0 | 0 | 0 | 0 | 0 | 0 | 0 | 0 | 0 | |
| | Special Rate | 0 | 0 | 0 | 1 | 1 | 0 | 0 | 0 | 2 | |
| | Total | 0 | 0 | 0 | 1 | 1 | 0 | 0 | 0 | 2 | |
| | Other Operations | General Rate - 10-45% | 0 | 0 | 2 | 0 | 0 | 0 | 0 | 0 | 2 |
| | | General Rate - 50-95% | 1 | 0 | 5 | 0 | 1 | 1 | 0 | 0 | 8 |
| General Rate - 100% | | 3 | 0 | 4 | 1 | 1 | 1 | 0 | 0 | 10 | |
| General Rate - EDA | | 0 | 0 | 0 | 0 | 0 | 0 | 0 | 0 | 0 | |
| Intermediate | | 0 | 0 | 1 | 0 | 0 | 0 | 0 | 0 | 1 | |
| Special Rate | | 29 | 26 | 76 | 3 | 15 | 8 | 2 | 2 | 165 | |
| Total | | 33 | 26 | 88 | 4 | 17 | 10 | 2 | 2 | 186 | |

Note: Conflict has been determined using earliest accepted disability conflict. Please see Conflict Groupings note on first page.

Source: DVA Ad hoc Information System.

Table 20: Disability Pensioners on Service Pension by Conflict, Rate Group and State - September 2011

| | NSW | VIC | QLD | SA | WA | TAS | NT | ACT | O'seas | Total | |
|----------------------------|-----------------------|-----------------------|-----|-----|-----|-----|----|-----|--------|-------|-----|
| Peacekeeping Forces | General Rate - 10-45% | 1 | 0 | 0 | 0 | 0 | 0 | 0 | 0 | 1 | |
| | General Rate - 50-95% | 0 | 0 | 1 | 0 | 0 | 0 | 0 | 0 | 1 | |
| | General Rate - 100% | 0 | 0 | 0 | 0 | 0 | 0 | 0 | 0 | 0 | |
| | General Rate - EDA | 0 | 0 | 0 | 0 | 0 | 0 | 0 | 0 | 0 | |
| | Intermediate | 0 | 0 | 0 | 0 | 0 | 0 | 0 | 0 | 0 | |
| | Special Rate | 8 | 9 | 17 | 2 | 3 | 2 | 0 | 1 | 0 | 42 |
| | Total | 9 | 9 | 18 | 2 | 3 | 2 | 0 | 1 | 0 | 44 |
| | Serving Member | General Rate - 10-45% | 70 | 24 | 109 | 21 | 29 | 8 | 2 | 12 | 2 |
| General Rate - 50-95% | | 46 | 17 | 63 | 12 | 18 | 2 | 4 | 6 | 0 | 168 |
| General Rate - 100% | | 10 | 5 | 13 | 3 | 8 | 0 | 0 | 4 | 1 | 44 |
| General Rate - EDA | | 1 | 1 | 2 | 0 | 1 | 0 | 0 | 0 | 0 | 5 |
| Intermediate Rate | | 3 | 0 | 2 | 1 | 1 | 0 | 0 | 0 | 0 | 7 |
| Special Rate | | 72 | 26 | 84 | 16 | 29 | 5 | 3 | 3 | 1 | 239 |
| Total | | 202 | 73 | 273 | 53 | 86 | 15 | 9 | 25 | 4 | 740 |

Note: Conflict has been determined using earliest accepted disability conflict. Please see Conflict Groupings note on first page.

Source: DVA Ad hoc Information System.

Table 20: Disability Pensioners on Service Pension by Conflict, Rate Group and State - September 2011

| | NSW | VIC | QLD | SA | WA | TAS | NT | ACT | O'seas | Total | |
|-------------------------------|-----------------------|--------|--------|-------|-------|-------|-----|-----|--------|--------|--------|
| Not Stated | General Rate - | | | | | | | | | | |
| | 10-45% | 2 | 1 | 1 | 0 | 0 | 0 | 0 | 0 | 4 | |
| | General Rate - | | | | | | | | | | |
| | 50-95% | 1 | 0 | 1 | 0 | 1 | 0 | 0 | 0 | 3 | |
| | General Rate - | | | | | | | | | | |
| | 100% | 14 | 19 | 18 | 6 | 3 | 1 | 0 | 0 | 61 | |
| | General Rate - | | | | | | | | | | |
| | EDA | 0 | 0 | 1 | 0 | 0 | 0 | 0 | 0 | 1 | |
| Intermediate | 0 | 0 | 0 | 0 | 0 | 0 | 0 | 0 | 0 | | |
| Special Rate | 4 | 3 | 2 | 1 | 1 | 1 | 0 | 0 | 0 | 12 | |
| Total | 21 | 23 | 23 | 7 | 5 | 2 | 0 | 0 | 0 | 81 | |
| All Wars and Conflicts | General Rate - | | | | | | | | | | |
| | 10-45% | 2461 | 1816 | 2182 | 852 | 903 | 319 | 30 | 151 | 18 | 8732 |
| | General Rate - | | | | | | | | | | |
| | 50-95% | 3 630 | 2 331 | 2 879 | 841 | 940 | 465 | 39 | 145 | 24 | 11 294 |
| | General Rate - | | | | | | | | | | |
| | 100% | 2 602 | 1 530 | 1 832 | 547 | 652 | 285 | 21 | 89 | 20 | 7 578 |
| | General Rate - | | | | | | | | | | |
| | EDA | 2 743 | 1 934 | 1 835 | 414 | 364 | 165 | 7 | 48 | 9 | 7 519 |
| Intermediate | 119 | 55 | 77 | 26 | 20 | 6 | 3 | 4 | 1 | 311 | |
| Special Rate | 6 167 | 3 446 | 6 851 | 1 929 | 2 462 | 989 | 92 | 216 | 131 | 22 283 | |
| Total | 17 722 | 11 112 | 15 656 | 4 609 | 5 341 | 2 229 | 192 | 653 | 203 | 57 717 | |

Note: Conflict has been determined using earliest accepted disability conflict. Please see Conflict Groupings note on first page.

Source: DVA Ad hoc Information System.

Table 21: Disability Pensioners on Service Pension by State, Age Group and Conflict - September 2011

| Total | | | | | | | | | | | | |
|--------------------|-------------------------|---------------------------------|----------------|-----------------|-------------------|--------------------|---------------------------|-------------------------|-----------------------------|-----------------------|-------------------|-----------------|
| | Second World War | Korea, Malaya & FESR | Vietnam | Gulf War | East Timor | Afghanistan | War in Iraq (2003) | Other Operations | Peace-keeping Forces | Serving Member | Not Stated | All Wars |
| Under 55 | 0 | 0 | 3 | 41 | 190 | 9 | 2 | 143 | 34 | 47 | 0 | 469 |
| 55 to 59 | 0 | 0 | 377 | 8 | 17 | 1 | 0 | 29 | 4 | 57 | 0 | 493 |
| 60 to 64 | 0 | 259 | 11 731 | 4 | 16 | 0 | 0 | 9 | 3 | 172 | 6 | 12 200 |
| 65 to 69 | 0 | 1 649 | 8 979 | 1 | 6 | 0 | 0 | 4 | 2 | 174 | 1 | 10 816 |
| 70 to 74 | 0 | 2 276 | 2 037 | 1 | 1 | 0 | 0 | 0 | 1 | 149 | 0 | 4 465 |
| 75 to 79 | 0 | 2 302 | 734 | 0 | 0 | 0 | 0 | 1 | 0 | 78 | 7 | 3 122 |
| 80 to 84 | 843 | 1 757 | 317 | 0 | 0 | 0 | 0 | 0 | 0 | 40 | 16 | 2 973 |
| 85 to 89 | 15 296 | 176 | 46 | 0 | 0 | 0 | 0 | 0 | 0 | 20 | 41 | 15 579 |
| 90 or over | 7 569 | 15 | 3 | 0 | 0 | 0 | 0 | 0 | 0 | 3 | 10 | 7 600 |
| Total | 23 708 | 8 434 | 24 227 | 55 | 230 | 10 | 2 | 186 | 44 | 740 | 81 | 57 717 |
| Average Age | 88.6 | 74.4 | 65.4 | 49.1 | 44.8 | 43.1 | 50.0 | 48.3 | 48.2 | 67.3 | 83.8 | 76.1 |

| New South Wales | | | | | | | | | | | | |
|------------------------|-------------------------|---------------------------------|----------------|-----------------|-------------------|--------------------|---------------------------|-------------------------|-----------------------------|-----------------------|-------------------|-----------------|
| | Second World War | Korea, Malaya & FESR | Vietnam | Gulf War | East Timor | Afghanistan | War in Iraq (2003) | Other Operations | Peace-keeping Forces | Serving Member | Not Stated | All Wars |
| Under 55 | 0 | 0 | 1 | 15 | 49 | 3 | 0 | 22 | 6 | 11 | 0 | 107 |
| 55 to 59 | 0 | 0 | 101 | 3 | 1 | 0 | 0 | 6 | 2 | 17 | 0 | 130 |
| 60 to 64 | 0 | 83 | 3 023 | 3 | 1 | 0 | 0 | 4 | 0 | 55 | 0 | 3 169 |
| 65 to 69 | 0 | 376 | 2 371 | 0 | 1 | 0 | 0 | 1 | 0 | 38 | 0 | 2 787 |
| 70 to 74 | 0 | 606 | 499 | 1 | 1 | 0 | 0 | 0 | 1 | 41 | 0 | 1 149 |
| 75 to 79 | 0 | 747 | 189 | 0 | 0 | 0 | 0 | 0 | 0 | 22 | 3 | 961 |
| 80 to 84 | 357 | 641 | 104 | 0 | 0 | 0 | 0 | 0 | 0 | 11 | 6 | 1 119 |
| 85 to 89 | 5 520 | 74 | 15 | 0 | 0 | 0 | 0 | 0 | 0 | 7 | 10 | 5 626 |
| 90 or over | 2 663 | 7 | 2 | 0 | 0 | 0 | 0 | 0 | 0 | 0 | 2 | 2 674 |
| Total | 8 540 | 2 534 | 6 305 | 22 | 53 | 3 | 0 | 33 | 9 | 202 | 21 | 17 722 |
| Average Age | 88.5 | 75.4 | 65.4 | 51.2 | 43.9 | 41.7 | | 50.4 | 49.9 | 67.2 | 84.7 | 77.9 |

Note: Conflict has been determined using earliest accepted disability conflict. Please see Conflict Groupings note on first page.
Source: DVA Ad hoc Information System.

Table 21: Disability Pensioners on Service Pension by State, Age Group and Conflict - September 2011

| Victoria | | | | | | | | | | | | |
|--------------------|-------------------------|---------------------------------|----------------|-----------------|-------------------|--------------------|---------------------------|-------------------------|-----------------------------|-----------------------|-------------------|-----------------|
| | Second World War | Korea, Malaya & FESR | Vietnam | Gulf War | East Timor | Afghanistan | War in Iraq (2003) | Other Operations | Peace-keeping Forces | Serving Member | Not Stated | All Wars |
| Under 55 | 0 | 0 | 0 | 6 | 25 | 1 | 0 | 22 | 8 | 5 | 0 | 67 |
| 55 to 59 | 0 | 0 | 31 | 1 | 1 | 0 | 0 | 3 | 0 | 4 | 0 | 40 |
| 60 to 64 | 0 | 30 | 2 030 | 0 | 1 | 0 | 0 | 1 | 1 | 16 | 4 | 2 083 |
| 65 to 69 | 0 | 202 | 1 577 | 0 | 0 | 0 | 0 | 0 | 0 | 19 | 0 | 1 798 |
| 70 to 74 | 0 | 296 | 275 | 0 | 0 | 0 | 0 | 0 | 0 | 13 | 0 | 584 |
| 75 to 79 | 0 | 316 | 90 | 0 | 0 | 0 | 0 | 0 | 0 | 8 | 1 | 415 |
| 80 to 84 | 136 | 288 | 57 | 0 | 0 | 0 | 0 | 0 | 0 | 4 | 2 | 487 |
| 85 to 89 | 3 714 | 28 | 4 | 0 | 0 | 0 | 0 | 0 | 0 | 4 | 13 | 3 763 |
| 90 or over | 1 871 | 1 | 0 | 0 | 0 | 0 | 0 | 0 | 0 | 0 | 3 | 1 875 |
| Total | 5 721 | 1 161 | 4 064 | 7 | 27 | 1 | 0 | 26 | 9 | 73 | 23 | 11 112 |
| Average Age | 88.7 | 75.0 | 65.2 | 45.9 | 41.1 | 32.0 | | 45.7 | 45.3 | 68.1 | 83.0 | 78.2 |

| Queensland | | | | | | | | | | | | |
|--------------------|-------------------------|---------------------------------|----------------|-----------------|-------------------|--------------------|---------------------------|-------------------------|-----------------------------|-----------------------|-------------------|-----------------|
| | Second World War | Korea, Malaya & FESR | Vietnam | Gulf War | East Timor | Afghanistan | War in Iraq (2003) | Other Operations | Peace-keeping Forces | Serving Member | Not Stated | All Wars |
| Under 55 | 0 | 0 | 1 | 10 | 89 | 1 | 0 | 67 | 14 | 16 | 0 | 198 |
| 55 to 59 | 0 | 0 | 138 | 3 | 8 | 0 | 0 | 17 | 1 | 23 | 0 | 190 |
| 60 to 64 | 0 | 68 | 3 448 | 1 | 8 | 0 | 0 | 4 | 2 | 60 | 1 | 3 592 |
| 65 to 69 | 0 | 550 | 2 866 | 0 | 4 | 0 | 0 | 0 | 1 | 71 | 1 | 3 493 |
| 70 to 74 | 0 | 815 | 800 | 0 | 0 | 0 | 0 | 0 | 0 | 61 | 0 | 1 676 |
| 75 to 79 | 0 | 768 | 293 | 0 | 0 | 0 | 0 | 0 | 0 | 28 | 1 | 1 090 |
| 80 to 84 | 143 | 471 | 95 | 0 | 0 | 0 | 0 | 0 | 0 | 7 | 5 | 721 |
| 85 to 89 | 2 995 | 46 | 18 | 0 | 0 | 0 | 0 | 0 | 0 | 5 | 12 | 3 076 |
| 90 or over | 1 610 | 4 | 1 | 0 | 0 | 0 | 0 | 0 | 0 | 2 | 3 | 1 620 |
| Total | 4 748 | 2 722 | 7 660 | 14 | 109 | 1 | 0 | 88 | 18 | 273 | 23 | 15 656 |
| Average Age | 88.7 | 74.1 | 65.7 | 48.8 | 45.4 | 41.0 | | 48.2 | 47.6 | 67.0 | 84.1 | 73.9 |

Note: Conflict has been determined using earliest accepted disability conflict. Please see Conflict Groupings note on first page.
Source: DVA Ad hoc Information System.

Table 21: Disability Pensioners on Service Pension by State, Age Group and Conflict - September 2011

South Australia

| | Second World War | Korea, Malaya & FESR | Vietnam | Gulf War | East Timor | Afghan-istan | War in Iraq (2003) | Other Operations | Peace-keeping Forces | Serving Member | Not Stated | All Wars |
|--------------------|------------------|----------------------|---------|----------|------------|--------------|--------------------|------------------|----------------------|----------------|------------|----------|
| Under 55 | 0 | 0 | 1 | 1 | 7 | 0 | 1 | 4 | 2 | 5 | 0 | 21 |
| 55 to 59 | 0 | 0 | 44 | 0 | 3 | 0 | 0 | 0 | 0 | 5 | 0 | 52 |
| 60 to 64 | 0 | 28 | 1 189 | 0 | 1 | 0 | 0 | 0 | 0 | 12 | 0 | 1 230 |
| 65 to 69 | 0 | 169 | 787 | 0 | 0 | 0 | 0 | 0 | 0 | 14 | 0 | 970 |
| 70 to 74 | 0 | 137 | 125 | 0 | 0 | 0 | 0 | 0 | 0 | 9 | 0 | 271 |
| 75 to 79 | 0 | 115 | 42 | 0 | 0 | 0 | 0 | 0 | 0 | 1 | 1 | 159 |
| 80 to 84 | 62 | 81 | 13 | 0 | 0 | 0 | 0 | 0 | 0 | 5 | 1 | 162 |
| 85 to 89 | 1 174 | 10 | 4 | 0 | 0 | 0 | 0 | 0 | 0 | 1 | 3 | 1 192 |
| 90 or over | 549 | 0 | 0 | 0 | 0 | 0 | 0 | 0 | 0 | 1 | 2 | 552 |
| Total | 1 785 | 540 | 2 205 | 1 | 11 | 0 | 1 | 4 | 2 | 53 | 7 | 4 609 |
| Average Age | 88.5 | 72.8 | 64.7 | 45.0 | 47.6 | | 46.0 | 44.3 | 49.0 | 66.3 | 87.4 | 74.8 |

Western Australia

| | Second World War | Korea, Malaya & FESR | Vietnam | Gulf War | East Timor | Afghan-istan | War in Iraq (2003) | Other Operations | Peace-keeping Forces | Serving Member | Not Stated | All Wars |
|--------------------|------------------|----------------------|---------|----------|------------|--------------|--------------------|------------------|----------------------|----------------|------------|----------|
| Under 55 | 0 | 0 | 0 | 5 | 12 | 4 | 1 | 14 | 2 | 7 | 0 | 45 |
| 55 to 59 | 0 | 0 | 33 | 0 | 2 | 1 | 0 | 2 | 0 | 3 | 0 | 41 |
| 60 to 64 | 0 | 29 | 1 295 | 0 | 2 | 0 | 0 | 0 | 0 | 17 | 0 | 1 343 |
| 65 to 69 | 0 | 244 | 866 | 0 | 1 | 0 | 0 | 1 | 1 | 20 | 0 | 1 133 |
| 70 to 74 | 0 | 285 | 205 | 0 | 0 | 0 | 0 | 0 | 0 | 19 | 0 | 509 |
| 75 to 79 | 0 | 240 | 75 | 0 | 0 | 0 | 0 | 0 | 0 | 11 | 1 | 327 |
| 80 to 84 | 79 | 166 | 27 | 0 | 0 | 0 | 0 | 0 | 0 | 9 | 2 | 283 |
| 85 to 89 | 1 124 | 11 | 2 | 0 | 0 | 0 | 0 | 0 | 0 | 0 | 2 | 1 139 |
| 90 or over | 520 | 1 | 0 | 0 | 0 | 0 | 0 | 0 | 0 | 0 | 0 | 521 |
| Total | 1 723 | 976 | 2 503 | 5 | 17 | 5 | 1 | 17 | 3 | 86 | 5 | 5 341 |
| Average Age | 88.5 | 73.5 | 65.2 | 46.6 | 45.0 | 46.6 | 54.0 | 47.2 | 52.0 | 68.1 | 81.4 | 74.1 |

Note: Conflict has been determined using earliest accepted disability conflict. Please see Conflict Groupings note on first page.
Source: DVA Ad hoc Information System.

Table 21: Disability Pensioners on Service Pension by State, Age Group and Conflict - September 2011

| Tasmania | | | | | | | | | | | | | |
|--------------------|------------------|----------------------|---------|----------|------------|--------------|--------------------|------------------|----------------------|----------------|------------|----------|--|
| | Second World War | Korea, Malaya & FESR | Vietnam | Gulf War | East Timor | Afghan-istan | War in Iraq (2003) | Other Operations | Peace-keeping Forces | Serving Member | Not Stated | All Wars | |
| Under 55 | 0 | 0 | 0 | 2 | 5 | 0 | 0 | 8 | 1 | 1 | 0 | 17 | |
| 55 to 59 | 0 | 0 | 23 | 0 | 1 | 0 | 0 | 0 | 1 | 2 | 0 | 27 | |
| 60 to 64 | 0 | 16 | 491 | 0 | 3 | 0 | 0 | 0 | 0 | 3 | 1 | 514 | |
| 65 to 69 | 0 | 62 | 337 | 0 | 0 | 0 | 0 | 1 | 0 | 5 | 0 | 405 | |
| 70 to 74 | 0 | 88 | 58 | 0 | 0 | 0 | 0 | 0 | 0 | 1 | 0 | 147 | |
| 75 to 79 | 0 | 68 | 18 | 0 | 0 | 0 | 0 | 1 | 0 | 2 | 0 | 89 | |
| 80 to 84 | 50 | 71 | 10 | 0 | 0 | 0 | 0 | 0 | 0 | 0 | 0 | 131 | |
| 85 to 89 | 606 | 3 | 3 | 0 | 0 | 0 | 0 | 0 | 0 | 1 | 1 | 614 | |
| 90 or over | 284 | 1 | 0 | 0 | 0 | 0 | 0 | 0 | 0 | 0 | 0 | 285 | |
| Total | 940 | 309 | 940 | 2 | 9 | 0 | 0 | 10 | 2 | 15 | 2 | 2 229 | |
| Average Age | 88.3 | 74.0 | 64.8 | 42.5 | 51.4 | | | 51.2 | 50.5 | 66.5 | 73.5 | 75.9 | |

| Northern Territory | | | | | | | | | | | | | |
|---------------------------|------------------|----------------------|---------|----------|------------|--------------|--------------------|------------------|----------------------|----------------|------------|----------|--|
| | Second World War | Korea, Malaya & FESR | Vietnam | Gulf War | East Timor | Afghan-istan | War in Iraq (2003) | Other Operations | Peace-keeping Forces | Serving Member | Not Stated | All Wars | |
| Under 55 | 0 | 0 | 0 | 0 | 1 | 0 | 0 | 1 | 0 | 2 | 0 | 4 | |
| 55 to 59 | 0 | 0 | 2 | 0 | 1 | 0 | 0 | 0 | 0 | 1 | 0 | 4 | |
| 60 to 64 | 0 | 1 | 70 | 0 | 0 | 0 | 0 | 0 | 0 | 3 | 0 | 74 | |
| 65 to 69 | 0 | 15 | 36 | 0 | 0 | 0 | 0 | 1 | 0 | 0 | 0 | 52 | |
| 70 to 74 | 0 | 6 | 11 | 0 | 0 | 0 | 0 | 0 | 0 | 1 | 0 | 18 | |
| 75 to 79 | 0 | 4 | 4 | 0 | 0 | 0 | 0 | 0 | 0 | 0 | 0 | 8 | |
| 80 to 84 | 0 | 5 | 2 | 0 | 0 | 0 | 0 | 0 | 0 | 0 | 0 | 7 | |
| 85 to 89 | 13 | 1 | 0 | 0 | 0 | 0 | 0 | 0 | 0 | 2 | 0 | 16 | |
| 90 or over | 9 | 0 | 0 | 0 | 0 | 0 | 0 | 0 | 0 | 0 | 0 | 9 | |
| Total | 22 | 32 | 125 | 0 | 2 | 0 | 0 | 2 | 0 | 9 | 0 | 192 | |
| Average Age | 89.0 | 71.7 | 65.0 | | 45.0 | | | 53.5 | | 63.7 | | 68.5 | |

Note: Conflict has been determined using earliest accepted disability conflict. Please see Conflict Groupings note on first page.
Source: DVA Ad hoc Information System.

Table 21: Disability Pensioners on Service Pension by State, Age Group and Conflict - September 2011

Australian Capital Territory

| | Second World War | Korea, Malaya & FESR | Vietnam | Gulf War | East Timor | Afghanistan | War in Iraq (2003) | Other Operations | Peace-keeping Forces | Serving Member | Not Stated | All Wars |
|--------------------|------------------|----------------------|---------|----------|------------|-------------|--------------------|------------------|----------------------|----------------|------------|----------|
| Under 55 | 0 | 0 | 0 | 0 | 1 | 0 | 0 | 1 | 1 | 0 | 0 | 3 |
| 55 to 59 | 0 | 0 | 0 | 0 | 0 | 0 | 0 | 1 | 0 | 1 | 0 | 2 |
| 60 to 64 | 0 | 3 | 110 | 0 | 0 | 0 | 0 | 0 | 0 | 4 | 0 | 117 |
| 65 to 69 | 0 | 23 | 100 | 1 | 0 | 0 | 0 | 0 | 0 | 7 | 0 | 131 |
| 70 to 74 | 0 | 34 | 47 | 0 | 0 | 0 | 0 | 0 | 0 | 4 | 0 | 85 |
| 75 to 79 | 0 | 35 | 19 | 0 | 0 | 0 | 0 | 0 | 0 | 5 | 0 | 59 |
| 80 to 84 | 13 | 32 | 9 | 0 | 0 | 0 | 0 | 0 | 0 | 4 | 0 | 58 |
| 85 to 89 | 139 | 3 | 0 | 0 | 0 | 0 | 0 | 0 | 0 | 0 | 0 | 142 |
| 90 or over | 56 | 0 | 0 | 0 | 0 | 0 | 0 | 0 | 0 | 0 | 0 | 56 |
| Total | 208 | 130 | 285 | 1 | 1 | 0 | 0 | 2 | 1 | 25 | 0 | 653 |
| Average Age | 88.2 | 74.7 | 67.1 | 66.0 | 37.0 | | | 51.0 | 51.0 | 71.4 | | 75.4 |

Overseas

| | Second World War | Korea, Malaya & FESR | Vietnam | Gulf War | East Timor | Afghanistan | War in Iraq (2003) | Other Operations | Peace-keeping Forces | Serving Member | Not Stated | All Wars |
|--------------------|------------------|----------------------|---------|----------|------------|-------------|--------------------|------------------|----------------------|----------------|------------|----------|
| Under 55 | 0 | 0 | 0 | 2 | 1 | 0 | 0 | 4 | 0 | 0 | 0 | 7 |
| 55 to 59 | 0 | 0 | 5 | 1 | 0 | 0 | 0 | 0 | 0 | 1 | 0 | 7 |
| 60 to 64 | 0 | 1 | 75 | 0 | 0 | 0 | 0 | 0 | 0 | 2 | 0 | 78 |
| 65 to 69 | 0 | 8 | 39 | 0 | 0 | 0 | 0 | 0 | 0 | 0 | 0 | 47 |
| 70 to 74 | 0 | 9 | 17 | 0 | 0 | 0 | 0 | 0 | 0 | 0 | 0 | 26 |
| 75 to 79 | 0 | 9 | 4 | 0 | 0 | 0 | 0 | 0 | 0 | 1 | 0 | 14 |
| 80 to 84 | 3 | 2 | 0 | 0 | 0 | 0 | 0 | 0 | 0 | 0 | 0 | 5 |
| 85 to 89 | 11 | 0 | 0 | 0 | 0 | 0 | 0 | 0 | 0 | 0 | 0 | 11 |
| 90 or over | 7 | 1 | 0 | 0 | 0 | 0 | 0 | 0 | 0 | 0 | 0 | 8 |
| Total | 21 | 30 | 140 | 3 | 1 | 0 | 0 | 4 | 0 | 4 | 0 | 203 |
| Average Age | 88.4 | 73.5 | 64.9 | 47.3 | 35.0 | | | 44.8 | | 64.0 | | 67.8 |

Note: Conflict has been determined using earliest accepted disability conflict. Please see Conflict Groupings note on first page.

Source: DVA Ad hoc Information System.

Table 22: Specific Disability Allowances by Item Number and State - September 2011

| | NSW | VIC | QLD | SA | WA | TAS | NT | ACT | O'seas | Total |
|---|------------|------------|------------|-----------|-----------|-----------|----------|-----------|----------|------------|
| 001 Two arms amputated | 0 | 1 | 1 | 0 | 1 | 0 | 0 | 0 | 0 | 3 |
| 002 Two legs and one arm amputated | 0 | 1 | 0 | 0 | 0 | 0 | 0 | 0 | 0 | 1 |
| 003 Two legs amputated above the knee | 3 | 2 | 6 | 2 | 4 | 0 | 0 | 1 | 0 | 18 |
| 004 Two legs amputated and blinded in one eye | 0 | 0 | 0 | 0 | 0 | 0 | 0 | 0 | 0 | 0 |
| 005 One arm and one leg amputated and blinded in one eye | 0 | 0 | 0 | 0 | 0 | 0 | 0 | 0 | 0 | 0 |
| 006 One leg and one arm amputated | 2 | 0 | 1 | 0 | 1 | 0 | 0 | 0 | 0 | 4 |
| 007 One leg amputated above, and one leg amputated below, the knee | 0 | 0 | 1 | 0 | 0 | 0 | 0 | 0 | 0 | 1 |
| 008 Two legs amputated below the knee | 4 | 3 | 4 | 2 | 1 | 0 | 0 | 1 | 0 | 15 |
| 009 One arm amputated and blinded in one eye | 0 | 0 | 0 | 0 | 0 | 0 | 0 | 0 | 0 | 0 |
| 010 One leg amputated and blinded in one eye | 1 | 0 | 0 | 0 | 0 | 0 | 0 | 0 | 0 | 1 |
| 011 One leg amputated above the knee | 14 | 10 | 6 | 5 | 10 | 1 | 0 | 0 | 0 | 46 |
| 012 One leg amputated below the knee | 23 | 14 | 17 | 4 | 9 | 2 | 0 | 3 | 0 | 72 |
| 013 One arm amputated above the elbow | 3 | 4 | 2 | 2 | 1 | 1 | 0 | 0 | 0 | 13 |
| 014 One arm amputated below the elbow | 1 | 1 | 1 | 1 | 2 | 0 | 0 | 0 | 0 | 6 |
| 015 Blinded in one eye | 321 | 162 | 131 | 33 | 43 | 15 | 1 | 7 | 4 | 717 |
| Total | 372 | 198 | 170 | 49 | 72 | 19 | 1 | 12 | 4 | 897 |

Source: DVA Ad hoc Information System.

Table 23: Social Security Age Pensioners by Age Group and State - September 2011

| | NSW | VIC | QLD | SA | WA | TAS | NT | ACT | O'seas | Total |
|--------------------|-------|-------|-------|------|------|------|------|------|--------|-------|
| Under 55 | 2 | 0 | 0 | 0 | 0 | 0 | 0 | 0 | 0 | 2 |
| 55 to 59 | 2 | 0 | 0 | 1 | 0 | 0 | 0 | 0 | 0 | 3 |
| 60 to 64 | 5 | 1 | 3 | 3 | 5 | 2 | 0 | 0 | 0 | 19 |
| 65 to 69 | 61 | 41 | 102 | 21 | 37 | 6 | 3 | 4 | 0 | 275 |
| 70 to 74 | 72 | 44 | 110 | 19 | 45 | 12 | 1 | 5 | 2 | 310 |
| 75 to 79 | 104 | 61 | 101 | 31 | 32 | 14 | 0 | 7 | 0 | 350 |
| 80 to 84 | 477 | 315 | 237 | 97 | 117 | 39 | 4 | 16 | 2 | 1 304 |
| 85 to 89 | 674 | 456 | 372 | 178 | 137 | 19 | 0 | 4 | 0 | 1 840 |
| 90 or over | 198 | 161 | 119 | 58 | 36 | 8 | 0 | 2 | 0 | 582 |
| Unknown | 0 | 0 | 0 | 0 | 0 | 0 | 0 | 0 | 0 | 0 |
| Total | 1 595 | 1 079 | 1 044 | 408 | 409 | 100 | 8 | 38 | 4 | 4 685 |
| Average Age | 83.9 | 84.4 | 81.9 | 83.7 | 81.6 | 80.5 | 74.9 | 79.4 | 77.5 | 83.0 |

Source: DVA Ad hoc Information System.

**Table 24: Disability Pensioners Also Receiving Social Security Age Pension by
Disability Pension Rate and State - September 2011**

| | | NSW | VIC | QLD | SA | WA | TAS | NT | ACT | O'seas | Total |
|---------------------|---------------------|-----|-----|-----|-----|-----|-----|----|-----|--------|-------|
| General Rate | 010 | 33 | 21 | 22 | 11 | 9 | 3 | 0 | 1 | 0 | 100 |
| | 015 | 3 | 2 | 0 | 1 | 2 | 0 | 1 | 0 | 0 | 9 |
| | 020 | 26 | 21 | 24 | 15 | 13 | 5 | 0 | 1 | 0 | 105 |
| | 025 | 1 | 0 | 0 | 0 | 1 | 0 | 0 | 0 | 0 | 2 |
| | 030 | 32 | 34 | 34 | 22 | 19 | 2 | 0 | 3 | 0 | 146 |
| | 035 | 0 | 0 | 0 | 0 | 0 | 0 | 0 | 0 | 0 | 0 |
| | 040 | 49 | 42 | 38 | 18 | 17 | 5 | 0 | 5 | 0 | 174 |
| | 045 | 1 | 1 | 0 | 0 | 0 | 0 | 0 | 0 | 0 | 2 |
| | 050 | 33 | 19 | 24 | 10 | 14 | 2 | 0 | 1 | 0 | 103 |
| | 055 | 0 | 0 | 0 | 0 | 0 | 0 | 0 | 0 | 0 | 0 |
| | 060 | 53 | 25 | 35 | 9 | 8 | 4 | 0 | 1 | 0 | 135 |
| | 065 | 0 | 0 | 0 | 0 | 0 | 0 | 0 | 0 | 0 | 0 |
| | 070 | 36 | 30 | 24 | 6 | 6 | 5 | 0 | 1 | 0 | 108 |
| | 075 | 0 | 0 | 0 | 0 | 1 | 0 | 0 | 0 | 0 | 1 |
| | 080 | 37 | 30 | 31 | 11 | 6 | 1 | 0 | 3 | 0 | 119 |
| | 085 | 0 | 0 | 0 | 0 | 0 | 0 | 0 | 0 | 0 | 0 |
| | 090 | 30 | 16 | 32 | 7 | 12 | 2 | 1 | 0 | 1 | 101 |
| | 095 | 0 | 0 | 0 | 0 | 0 | 0 | 0 | 0 | 0 | 0 |
| | 100 | 297 | 159 | 179 | 55 | 69 | 17 | 1 | 5 | 0 | 782 |
| | EDA | 220 | 174 | 137 | 45 | 12 | 6 | 0 | 2 | 0 | 596 |
| Total | | 851 | 574 | 580 | 210 | 189 | 52 | 3 | 23 | 1 | 2 483 |
| Intermediate | Intermediate | 1 | 1 | 2 | 2 | 0 | 0 | 0 | 0 | 1 | 7 |
| | Total | 1 | 1 | 2 | 2 | 0 | 0 | 0 | 0 | 1 | 7 |
| Special Rate | Blind | 12 | 8 | 10 | 1 | 2 | 0 | 0 | 0 | 0 | 33 |
| | TPI | 60 | 36 | 46 | 14 | 23 | 7 | 0 | 1 | 1 | 188 |
| | TTI | 0 | 0 | 0 | 0 | 0 | 0 | 0 | 0 | 0 | 0 |
| | Total | 72 | 44 | 56 | 15 | 25 | 7 | 0 | 1 | 1 | 221 |
| Grand Total | | 924 | 619 | 638 | 227 | 214 | 59 | 3 | 24 | 3 | 2 711 |

Source: DVA Ad hoc Information System.

**Table 25: Disability Pensioners also Receiving Social Security Age Pension by Conflict,
Disability Pension Rate Group and Age Group - September 2011**

| | | 65 to 69 | 70 to 74 | 75 to 79 | 80 to 84 | 85 to 89 | 90 or Over | Total |
|-------------------------|---------------------------------|------------------------------|----------|----------|----------|----------|------------|-------|
| Second World War | General Rate - 10-45% | 0 | 0 | 0 | 84 | 264 | 95 | 443 |
| | General Rate - 50-95% | 0 | 0 | 0 | 94 | 255 | 100 | 449 |
| | General Rate - 100% | 0 | 0 | 0 | 167 | 397 | 110 | 674 |
| | General Rate - EDA | 0 | 0 | 0 | 185 | 299 | 77 | 561 |
| | Intermediate Rate | 0 | 0 | 0 | 1 | 2 | 1 | 4 |
| | Special Rate | 0 | 0 | 0 | 41 | 87 | 19 | 147 |
| | Total | 0 | 0 | 0 | 572 | 1304 | 402 | 2278 |
| | Korea, Malaya & FESR | General Rate - 10-45% | 5 | 6 | 9 | 5 | 0 | 0 |
| | General Rate - 50-95% | 7 | 8 | 6 | 4 | 1 | 0 | 26 |
| | General Rate - 100% | 3 | 11 | 8 | 7 | 0 | 0 | 29 |
| | General Rate - EDA | 1 | 4 | 3 | 4 | 0 | 0 | 12 |
| | Intermediate Rate | 0 | 0 | 0 | 0 | 0 | 0 | 0 |
| | Special Rate | 4 | 7 | 2 | 3 | 0 | 0 | 16 |
| | Total | 20 | 36 | 28 | 23 | 1 | 0 | 108 |

Note: Conflict has been determined using earliest accepted disability conflict. Please see Conflict Groupings note on first page.
Source: DVA Ad hoc Information System.

**Table 25: Disability Pensioners also Receiving Social Security Age Pension by Conflict,
Disability Pension Rate Group and Age Group - September 2011**

| | | 65 to 69 | 70 to 74 | 75 to 79 | 80 to 84 | 85 to 89 | 90 or Over | Total |
|---------------------|--------------------------|----------|----------|----------|----------|----------|------------|-------|
| Vietnam | General Rate - | | | | | | | |
| | 10-45% | 1 | 2 | 1 | 1 | 0 | 0 | 5 |
| | General Rate - | | | | | | | |
| | 50-95% | 0 | 4 | 2 | 0 | 0 | 0 | 6 |
| | General Rate - | | | | | | | |
| | 100% | 1 | 3 | 0 | 1 | 0 | 0 | 5 |
| | General Rate - | | | | | | | |
| | EDA | 0 | 2 | 1 | 0 | 0 | 0 | 3 |
| | Intermediate Rate | 0 | 0 | 0 | 0 | 0 | 0 | 0 |
| Special Rate | 0 | 1 | 0 | 0 | 0 | 0 | 1 | |
| Total | 2 | 12 | 4 | 2 | 0 | 0 | 20 | |
| Gulf War | General Rate - | | | | | | | |
| | 10-45% | 0 | 0 | 0 | 0 | 0 | 0 | 0 |
| | General Rate - | | | | | | | |
| | 50-95% | 0 | 0 | 0 | 0 | 0 | 0 | 0 |
| | General Rate - | | | | | | | |
| | 100% | 0 | 0 | 0 | 0 | 0 | 0 | 0 |
| | General Rate - | | | | | | | |
| | EDA | 0 | 0 | 0 | 0 | 0 | 0 | 0 |
| | Intermediate Rate | 0 | 0 | 0 | 0 | 0 | 0 | 0 |
| Special Rate | 0 | 0 | 0 | 0 | 0 | 0 | 0 | |
| Total | 0 | 0 | 0 | 0 | 0 | 0 | 0 | |

Note: Conflict has been determined using earliest accepted disability conflict. Please see Conflict Groupings note on first page.
Source: DVA Ad hoc Information System.

**Table 25: Disability Pensioners also Receiving Social Security Age Pension by Conflict,
Disability Pension Rate Group and Age Group - September 2011**

| | | 65 to 69 | 70 to 74 | 75 to 79 | 80 to 84 | 85 to 89 | 90 or Over | Total |
|---------------------|--------------------------|----------|----------|----------|----------|----------|------------|-------|
| East Timor | General Rate - | | | | | | | |
| | 10-45% | 0 | 0 | 0 | 0 | 0 | 0 | 0 |
| | General Rate - | | | | | | | |
| | 50-95% | 0 | 0 | 0 | 0 | 0 | 0 | 0 |
| | General Rate - | | | | | | | |
| | 100% | 0 | 0 | 0 | 0 | 0 | 0 | 0 |
| | General Rate - | | | | | | | |
| | EDA | 0 | 0 | 0 | 0 | 0 | 0 | 0 |
| | Intermediate Rate | 0 | 0 | 0 | 0 | 0 | 0 | 0 |
| Special Rate | 0 | 0 | 0 | 0 | 0 | 0 | 0 | |
| Total | 0 | 0 | 0 | 0 | 0 | 0 | 0 | |
| Afghanistan | General Rate - | | | | | | | |
| | 10-45% | 0 | 0 | 0 | 0 | 0 | 0 | 0 |
| | General Rate - | | | | | | | |
| | 50-95% | 0 | 0 | 0 | 0 | 0 | 0 | 0 |
| | General Rate - | | | | | | | |
| | 100% | 0 | 0 | 0 | 0 | 0 | 0 | 0 |
| | General Rate - | | | | | | | |
| | EDA | 0 | 0 | 0 | 0 | 0 | 0 | 0 |
| | Intermediate Rate | 0 | 0 | 0 | 0 | 0 | 0 | 0 |
| Special Rate | 0 | 0 | 0 | 0 | 0 | 0 | 0 | |
| Total | 0 | 0 | 0 | 0 | 0 | 0 | 0 | |

Note: Conflict has been determined using earliest accepted disability conflict. Please see Conflict Groupings note on first page.
Source: DVA Ad hoc Information System.

**Table 25: Disability Pensioners also Receiving Social Security Age Pension by Conflict,
Disability Pension Rate Group and Age Group - September 2011**

| | 65 to 69 | 70 to 74 | 75 to 79 | 80 to 84 | 85 to 89 | 90 or Over | Total |
|---------------------------|----------|----------|----------|----------|----------|------------|-------|
| War in Iraq (2003) | | | | | | | |
| General Rate - | | | | | | | |
| 10-45% | 0 | 0 | 0 | 0 | 0 | 0 | 0 |
| General Rate - | | | | | | | |
| 50-95% | 0 | 0 | 0 | 0 | 0 | 0 | 0 |
| General Rate - | | | | | | | |
| 100% | 0 | 0 | 0 | 0 | 0 | 0 | 0 |
| General Rate - | | | | | | | |
| EDA | 0 | 0 | 0 | 0 | 0 | 0 | 0 |
| Intermediate Rate | 0 | 0 | 0 | 0 | 0 | 0 | 0 |
| Special Rate | 0 | 0 | 0 | 0 | 0 | 0 | 0 |
| Total | 0 | 0 | 0 | 0 | 0 | 0 | 0 |
| <hr/> | | | | | | | |
| Other Operations | | | | | | | |
| General Rate - | | | | | | | |
| 10-45% | 0 | 0 | 0 | 0 | 0 | 0 | 0 |
| General Rate - | | | | | | | |
| 50-95% | 0 | 0 | 0 | 0 | 0 | 0 | 0 |
| General Rate - | | | | | | | |
| 100% | 0 | 0 | 0 | 0 | 0 | 0 | 0 |
| General Rate - | | | | | | | |
| EDA | 0 | 0 | 0 | 0 | 0 | 0 | 0 |
| Intermediate Rate | 0 | 0 | 0 | 0 | 0 | 0 | 0 |
| Special Rate | 0 | 0 | 0 | 0 | 0 | 0 | 0 |
| Total | 0 | 0 | 0 | 0 | 0 | 0 | 0 |

Note: Conflict has been determined using earliest accepted disability conflict. Please see Conflict Groupings note on first page.
Source: DVA Ad hoc Information System.

**Table 25: Disability Pensioners also Receiving Social Security Age Pension by Conflict,
Disability Pension Rate Group and Age Group - September 2011**

| | | 65 to 69 | 70 to 74 | 75 to 79 | 80 to 84 | 85 to 89 | 90 or Over | Total | |
|----------------------------|------------------------------|------------------------------|----------|----------|----------|----------|------------|-------|----|
| Peacekeeping Forces | General Rate - 10-45% | 0 | 0 | 1 | 0 | 0 | 0 | 1 | |
| | General Rate - 50-95% | 1 | 2 | 0 | 0 | 0 | 0 | 3 | |
| | General Rate - 100% | 0 | 2 | 0 | 0 | 0 | 0 | 2 | |
| | General Rate - EDA | 0 | 2 | 2 | 0 | 0 | 0 | 4 | |
| | Intermediate Rate | 0 | 0 | 0 | 0 | 0 | 0 | 0 | |
| | Special Rate | 1 | 1 | 0 | 0 | 0 | 0 | 2 | |
| | Total | 2 | 7 | 3 | 0 | 0 | 0 | 12 | |
| | Serving Member | General Rate - 10-45% | 27 | 15 | 12 | 7 | 0 | 0 | 62 |
| | | General Rate - 50-95% | 32 | 25 | 15 | 8 | 0 | 0 | 81 |
| General Rate - 100% | | 29 | 23 | 8 | 2 | 1 | 0 | 63 | |
| General Rate - EDA | | 3 | 4 | 4 | 0 | 0 | 0 | 11 | |
| Intermediate Rate | | 2 | 1 | 0 | 0 | 0 | 0 | 3 | |
| Special Rate | | 33 | 15 | 7 | 0 | 0 | 0 | 55 | |
| Total | | 126 | 83 | 46 | 17 | 1 | 0 | 275 | |

Note: Conflict has been determined using earliest accepted disability conflict. Please see Conflict Groupings note on first page.
Source: DVA Ad hoc Information System.

**Table 25: Disability Pensioners also Receiving Social Security Age Pension by Conflict,
Disability Pension Rate Group and Age Group - September 2011**

| | | 65 to 69 | 70 to 74 | 75 to 79 | 80 to 84 | 85 to 89 | 90 or Over | Total |
|-----------------------------------|--------------------------|----------|----------|----------|----------|----------|------------|-------|
| Not Stated | General Rate - | | | | | | | |
| | 10-45% | 0 | 1 | 0 | 1 | 0 | 0 | 2 |
| | General Rate - | | | | | | | |
| | 50-95% | 0 | 1 | 1 | 0 | 0 | 0 | 2 |
| | General Rate - | | | | | | | |
| | 100% | 0 | 1 | 2 | 4 | 2 | 0 | 9 |
| | General Rate - | | | | | | | |
| | EDA | 0 | 0 | 1 | 4 | 0 | 0 | 5 |
| | Intermediate Rate | 0 | 0 | 0 | 0 | 0 | 0 | 0 |
| Special Rate | 0 | 0 | 0 | 0 | 0 | 0 | 0 | |
| Total | 0 | 3 | 4 | 9 | 2 | 0 | 18 | |
| All Wars and Conflicts | General Rate - | | | | | | | |
| | 10-45% | 33 | 24 | 23 | 98 | 264 | 95 | 538 |
| | General Rate - | | | | | | | |
| | 50-95% | 40 | 40 | 24 | 106 | 256 | 100 | 567 |
| | General Rate - | | | | | | | |
| | 100% | 33 | 40 | 18 | 181 | 400 | 110 | 782 |
| | General Rate - | | | | | | | |
| | EDA | 4 | 12 | 11 | 193 | 299 | 77 | 596 |
| Intermediate Rate | 2 | 1 | 0 | 1 | 2 | 1 | 7 | |
| Special Rate | 38 | 24 | 9 | 44 | 87 | 19 | 221 | |
| Total | 150 | 141 | 85 | 623 | 1308 | 402 | 2711 | |

Note: Conflict has been determined using earliest accepted disability conflict. Please see Conflict Groupings note on first page.
Source: DVA Ad hoc Information System.

Table 26: Defence Force Income Support Allowance by Type and State - September 2011

| | | NSW | VIC | QLD | SA | WA | TAS | NT | ACT | O'seas | Total |
|-------------------------|---------------------|------------|------------|------------|-----------|-----------|------------|-----------|------------|---------------|--------------|
| DFISA Centrelink | Persons | 4 039 | 2 732 | 3 718 | 790 | 1 090 | 316 | 28 | 182 | 6 | 12 901 |
| Pension | Ave' Payment | \$93.62 | \$88.02 | \$104.30 | \$100.19 | \$108.41 | \$119.67 | \$86.51 | \$60.84 | \$119.43 | \$97.34 |
| DFISA Centrelink | Persons | 72 | 52 | 113 | 27 | 28 | 14 | 1 | 4 | 0 | 311 |
| Benefit | Ave' Payment | \$85.28 | \$101.16 | \$104.01 | \$76.19 | \$116.39 | \$106.84 | \$172.61 | \$15.30 | | \$97.10 |
| DFISA DVA | Persons | 1 292 | 863 | 878 | 313 | 292 | 85 | 5 | 37 | 4 | 3 769 |
| | Ave' Payment | \$113.28 | \$112.87 | \$109.70 | \$105.25 | \$96.82 | \$116.89 | \$91.64 | \$82.29 | \$239.92 | \$110.29 |
| Total | Persons | 5 403 | 3 647 | 4 709 | 1 130 | 1 410 | 415 | 34 | 223 | 10 | 16 981 |
| | Ave' Payment | \$98.21 | \$94.08 | \$105.30 | \$101.02 | \$106.17 | \$118.67 | \$89.79 | \$63.58 | \$167.63 | \$100.21 |

Source: DVA Ad hoc Information System.

Table 27: Defence Force Income Support Allowance by Type and Age Group - September 2011

| | Under 55 | 55 to 59 | 60 to 64 | 65 to 69 | 70 to 74 | 75 to 79 | 80 to 84 | 85 to 89 | 90 or over | Unknown | Total |
|---------------------------------|-----------------|-----------------|-----------------|-----------------|-----------------|-----------------|-----------------|-----------------|-------------------|----------------|--------------|
| DFISA Centrelink Pension | 1 309 | 1 106 | 1 385 | 1 282 | 913 | 732 | 2 015 | 3 033 | 1 126 | 0 | 12 901 |
| DFISA Centrelink Benefit | 143 | 77 | 87 | 0 | 0 | 0 | 0 | 3 | 1 | 0 | 311 |
| DFISA DVA | 2 | 2 | 19 | 258 | 278 | 270 | 1 058 | 1 474 | 408 | 0 | 3 769 |
| Total | 1 454 | 1 185 | 1 491 | 1 540 | 1 191 | 1 002 | 3 073 | 4 510 | 1 535 | 0 | 16 981 |

Source: DVA Ad hoc Information System.

Table 28: Defence Force Income Support allowance also Receiving Disability Pension by Conflict and State - September 2011

| | NSW | VIC | QLD | SA | WA | TAS | NT | ACT | O'seas | Total |
|---------------------------------|------------|------------|------------|-----------|-----------|------------|-----------|------------|---------------|--------------|
| Second World War | 2 285 | 1 679 | 1 198 | 436 | 412 | 85 | 6 | 49 | 2 | 6 152 |
| Korea, Malaya & FESR | 128 | 76 | 126 | 13 | 56 | 17 | 1 | 9 | 1 | 427 |
| Vietnam | 86 | 51 | 84 | 17 | 25 | 10 | 0 | 9 | 1 | 283 |
| Gulf War | 3 | 3 | 2 | 0 | 0 | 1 | 0 | 0 | 0 | 9 |
| East Timor | 2 | 4 | 13 | 3 | 3 | 1 | 1 | 0 | 0 | 27 |
| Afghanistan | 0 | 0 | 0 | 0 | 0 | 0 | 0 | 0 | 0 | 0 |
| War in Iraq (2003) | 2 | 0 | 2 | 0 | 0 | 0 | 0 | 0 | 0 | 4 |
| Other Operations | 4 | 4 | 6 | 1 | 1 | 0 | 0 | 0 | 0 | 16 |
| Peacekeeping Forces | 22 | 11 | 32 | 11 | 9 | 2 | 0 | 4 | 0 | 91 |
| Serving Member | 824 | 410 | 1 330 | 222 | 328 | 131 | 17 | 49 | 4 | 3 315 |
| Not Stated | 11 | 8 | 11 | 10 | 7 | 3 | 0 | 1 | 0 | 51 |
| All Wars and Conflicts | 3 367 | 2 246 | 2 804 | 713 | 841 | 250 | 25 | 121 | 8 | 10 375 |

Note: Conflict has been determined using earliest accepted disability conflict. Please see Conflict Groupings note on first page.
Source: DVA Ad hoc Information System.