



**Australian Government**

---

**Department of Veterans' Affairs**

# **DVA PENSIONER SUMMARY**

**DECEMBER 2011**

## Notes - DVA Pensioner Summary - December 2011

### **Method of extraction**

The data used for this publication was extracted using "the current date" method of extraction which read data as at 30/12/2011. Please note that figures can be slightly overstated because of normal delays in processing death cases.

As noted in the March 2002 publication, extracting data by 'eligibility' alone resulted in some figures being overstated. From June 2002 onwards data is extracted on both 'eligibility' and 'payability', i.e. on the basis of a client not only being entitled to receive a benefit, but also in actual receipt of the benefit/s or payment.

### **Data integrity**

The numbers shown in the publication reflect the data currently stored in the Department's client database. Any inaccuracies existing in the publication may be attributed to data entry errors or various data conversions in the past. All due professional care is taken in correcting such errors, especially where they can be readily detected, by amending the client statistics as necessary. However, many errors are hidden within large aggregate numbers requiring extensive reconciliation and verification processes for detection. Such inconsistencies are actioned by business areas as they are detected.

### **Conflict groupings**

Significant changes have been made to tables reporting veterans by conflict. Tables 5 and 6, reporting on veterans receiving Service Pension, now include a category 'Other Post 1972 Conflicts'. This group includes Cambodia, Namibia, Rwanda, Somalia, the War in Iraq (2003) and Afghanistan.

Changes have also been made to the tables reporting on veterans receiving Disability Pension. The Second World War category now includes mariners from the Merchant Navy. Veterans who served in the Far East Strategic Reserve are now included with those who served in Korea and/or Malaya. The Vietnam group may include some veterans who served in North East Thailand. The 2003 War in Iraq, and the 2001-2003 operations in Afghanistan (previously 'War on Terror') are now reported and an additional category 'Other Operations' has been created comprising of Namibia, Cambodia, Yugoslavia and Somalia. The 'Serving Member' category refers to service men and women who were on active duty between 1972 and 1994 but did not serve in an operational area.

Those veterans who have served in more than one conflict or operational area have been included only in the earliest of those conflicts. For example, a veteran who saw service in both Korea and later Vietnam will not be included under Vietnam. Similarly, a veteran from Afghanistan who has also served in East Timor will only be included in the East Timor figure. Reports specific to any individual conflict or operation are available on request.

### **Revision**

All changes mentioned above have been made following consultation with the Policy and Development and Service Delivery Divisions. As part of an on-going review of statistical products and publications, this report will continue to be enhanced in future issues in consultation with relevant business areas.

### **Tables with "state"**

Prior to June 2009 tables with "state" were based on state of processing, not state of residence. ACT and the NT were included in the NSW and South Australian results respectively, with overseas residents included in the Tasmania figure. From June 2009 onwards residential address is used with ACT, NT and overseas reported separately.

### **Feedback**

Any comments for improving both the content and layout of this publication can be directed to James Rope on (02) 6289 6702 or via email to stats@dva.gov.au

## Contents

Net Total Persons Receiving a Pension From The Department of Veterans' Affairs  
Trend Analysis

### Charts:

Chart 1 Service Pensioners by State and by Age  
Chart 2 Disability Pensioners by State and by Age

Chart 3 War Widow(er) Pensioners by State and by Age  
Chart 4 Service, Disability and War Widow(er) Pensioners by State

### Tables:

Table 01 Service Pensioners by Classification  
Table 02 Disability Pensioners by Broad Rate Group  
Table 03 Dependants of Deceased Veterans by Type  
Table 04 ISS Recipients and Social Security Age Pensioners  
Table 05 Veteran Service Pensioners by Conflict and State  
Table 06 Veteran Service Pensioners by Conflict and Age  
Table 07 Income Support Beneficiaries by State, Classification and Age  
Table 08 Service Pensioners by Rate, Rate Level and State  
Table 09 Disability Pensioners by Rate and State  
Table 10 Disability Pensioners by Rate and Conflict  
Table 11 Disability Pensioners by Conflict, Rate Group and State  
Table 12 Disability Pensioners by State, Age and Conflict  
Table 13 War Widow(er)s by Age and State  
Table 14 War Widow(er)s by Conflict and State  
Table 15 Widow(er)s Receiving Income Support Supplement by Rate and State

Table 16 Orphans by Age and State  
Table 17 Orphans by Conflict and State  
Table 18 Disability Pensioners on Service Pension by Rate and State  
Table 19 Disability Pensioners on Service Pension by Rate and Conflict  
Table 20 Disability Pensioners on Service Pension by Conflict, Rate Group and State  
Table 21 Disability Pensioners on Service Pension by State, Age and Conflict  
Table 22 Specific Disability Allowances by Item Number and State  
Table 23 Social Security Age Pensioners by Age Group and State  
Table 24 Disability Pensioners Also Receiving Social Security Age Pension by Disability Pension Rate and State  
Table 25 Disability Pensioners also Receiving Social Security Age Pension by Conflict, Disability Pension Rate Group and Age Group  
Table 26 Defence Force Income Support Allowance by Type and State  
Table 27 Defence Force Income Support Allowance by Type and Age Group  
Table 28 Defence Force Income Support Allowance also Receiving Disability Pension, by Conflict and State

**Net Total Persons Receiving Income Support or a Compensation  
Pension From The Department of Veterans' Affairs - December 2011**

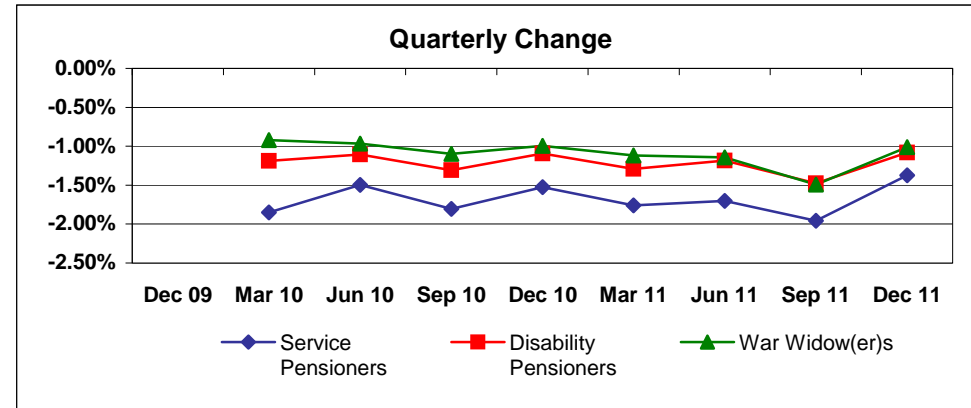
<b>Veteran Service Pensioners</b>	<b>85,476</b>
<b>Partner/Widow(er) Service Pensioners</b>	<b>76,361</b>
<b>Total Service Pensioners</b>	<b>161,837</b>
<b>Income Support Supplement recipients</b>	<b>71,978</b>
<b>Social Security Age Pensioners</b>	<b>4,590</b>
<b>Commonwealth Seniors' Health Card holders</b>	<b>6,686</b>
<b>Disability Pensioners receiving Income Support<sup>(1)</sup></b>	<b>60,336</b>
<b>Disability Pensioners not receiving Income Support</b>	<b>53,202</b>
<b>Total Disability Pensioners</b>	<b>113,538</b>
<b>War Widow(er) Pensioners receiving Income Support<sup>(1)</sup></b>	<b>72,165</b>
<b>War Widow(er) Pensioners not receiving Income Support</b>	<b>22,187</b>
<b>Total War Widow(er) Pensioners</b>	<b>94,352</b>
<b>Orphan Pensioners</b>	<b>172</b>
<b>Net Total<sup>(2)</sup></b>	<b>315,979</b>

(1) 'Income Support' includes Service Pension, Age Pension or Income Support Supplement.

(2) Components do not add to total due to overlaps.

## Trend Analysis

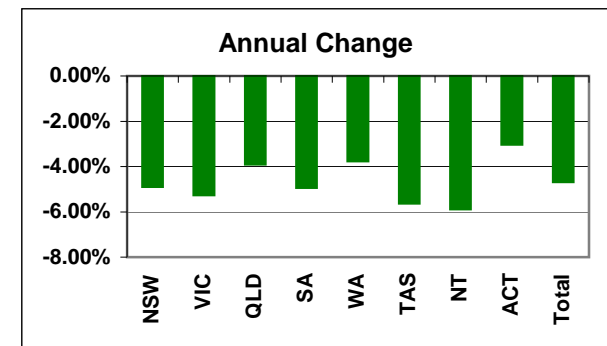
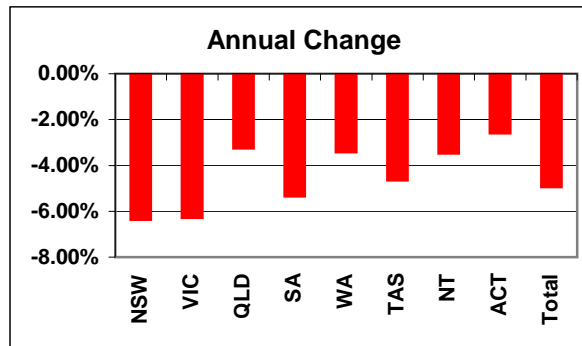
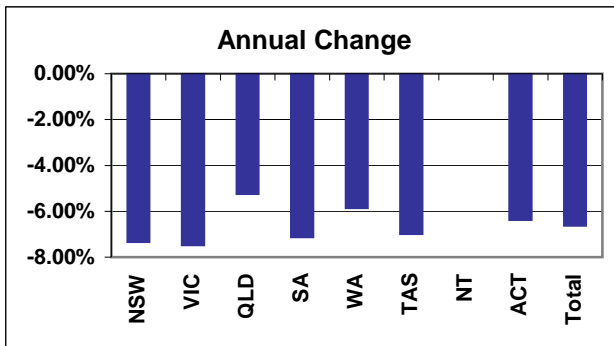
	Service Pensioners		Disability Pensioners		War Widow(er)s	
	Number	Change	Number	Change	Number	Change
<b>Dec 09</b>	185,403		125,212		103,022	
<b>Mar 10</b>	181,969	-1.85%	123,722	-1.19%	102,075	-0.92%
<b>Jun 10</b>	179,242	-1.50%	122,355	-1.10%	101,090	-0.96%
<b>Sep 10</b>	176,006	-1.81%	120,755	-1.31%	99,982	-1.10%
<b>Dec 10</b>	173,319	-1.53%	119,436	-1.09%	98,989	-0.99%
<b>Mar 11</b>	170,266	-1.76%	117,894	-1.29%	97,881	-1.12%
<b>Jun 11</b>	167,368	-1.70%	116,498	-1.18%	96,761	-1.14%
<b>Sep 11</b>	164,093	-1.96%	114,777	-1.48%	95,317	-1.49%
<b>Dec 11</b>	161,837	-1.37%	113,538	-1.08%	94,352	-1.01%



	Service Pensioners		
	Dec 10	Dec 11	Change
<b>NSW</b>	52,434	48,591	-7.33%
<b>VIC</b>	35,187	32,557	-7.47%
<b>QLD</b>	40,833	38,694	-5.24%
<b>SA</b>	16,770	15,577	-7.11%
<b>WA</b>	18,398	17,321	-5.85%
<b>TAS</b>	6,218	5,784	-6.98%
<b>NT</b>	497	497	0.00%
<b>ACT</b>	1,993	1,866	-6.37%
<b>Total</b>	173,319	161,837	-6.62%

	Disability Pensioners		
	Dec 10	Dec 11	Change
<b>NSW</b>	35,366	33,115	-6.36%
<b>VIC</b>	22,534	21,118	-6.28%
<b>QLD</b>	33,289	32,205	-3.26%
<b>SA</b>	8,572	8,114	-5.34%
<b>WA</b>	11,188	10,805	-3.42%
<b>TAS</b>	3,761	3,586	-4.65%
<b>NT</b>	806	778	-3.47%
<b>ACT</b>	3,125	3,044	-2.59%
<b>Total</b>	119,436	113,538	-4.94%

	War Widow(er)s		
	Dec 10	Dec 11	Change
<b>NSW</b>	35,028	33,317	-4.88%
<b>VIC</b>	23,779	22,529	-5.26%
<b>QLD</b>	20,573	19,769	-3.91%
<b>SA</b>	7,842	7,455	-4.93%
<b>WA</b>	6,913	6,653	-3.76%
<b>TAS</b>	3,114	2,939	-5.62%
<b>NT</b>	153	144	-5.88%
<b>ACT</b>	1,288	1,249	-3.03%
<b>Total</b>	98,989	94,352	-4.68%



Overseas clients are included in the totals but not reported separately.

## Trend Analysis (Continuation)

### Service Pensioners

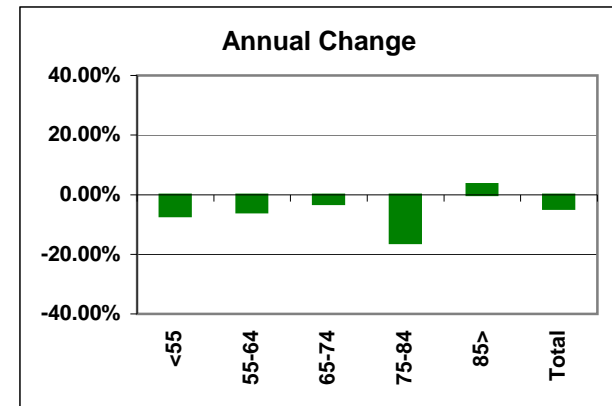
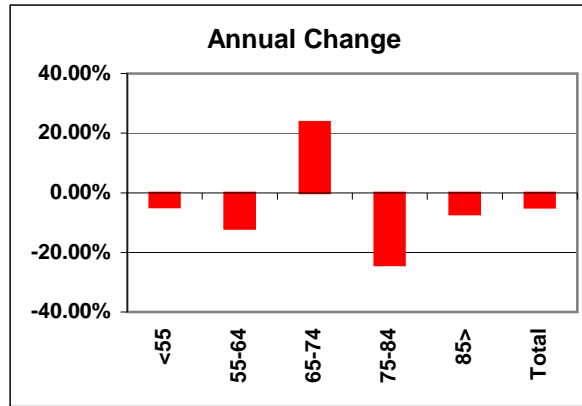
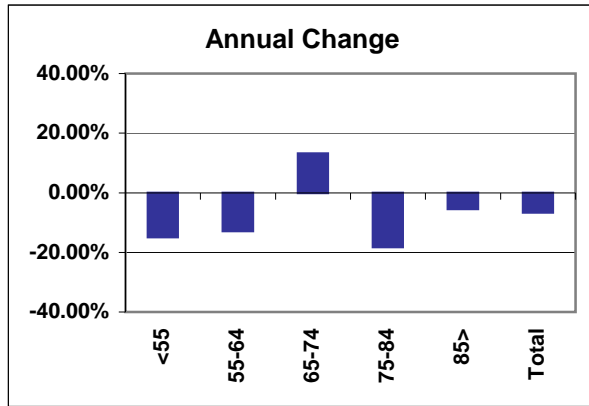
	Dec 10	Dec 11	Change
<55	3,018	2,569	-14.88%
55-64	35,690	31,129	-12.78%
65-74	31,185	35,286	13.15%
75-84	38,669	31,636	-18.19%
85>	64,757	61,217	-5.47%
<b>Total</b>	<b>173,319</b>	<b>161,837</b>	<b>-6.62%</b>

### Disability Pensioners

	Dec 10	Dec 11	Change
<55	19,091	18,175	-4.80%
55-64	30,688	27,027	-11.93%
65-74	18,681	23,107	23.69%
75-84	12,447	9,431	-24.23%
85>	38,529	35,798	-7.09%
<b>Total</b>	<b>119,436</b>	<b>113,538</b>	<b>-4.94%</b>

### War Widow(er)s

	Dec 10	Dec 11	Change
<55	729	677	-7.13%
55-64	3,209	3,021	-5.86%
65-74	6,497	6,298	-3.06%
75-84	37,249	31,242	-16.13%
85>	51,305	53,114	3.53%
<b>Total</b>	<b>98,989</b>	<b>94,352</b>	<b>-4.68%</b>

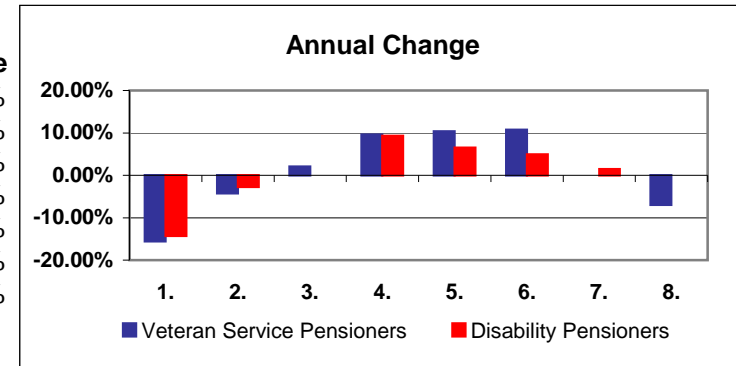


### Veteran Service Pensioners

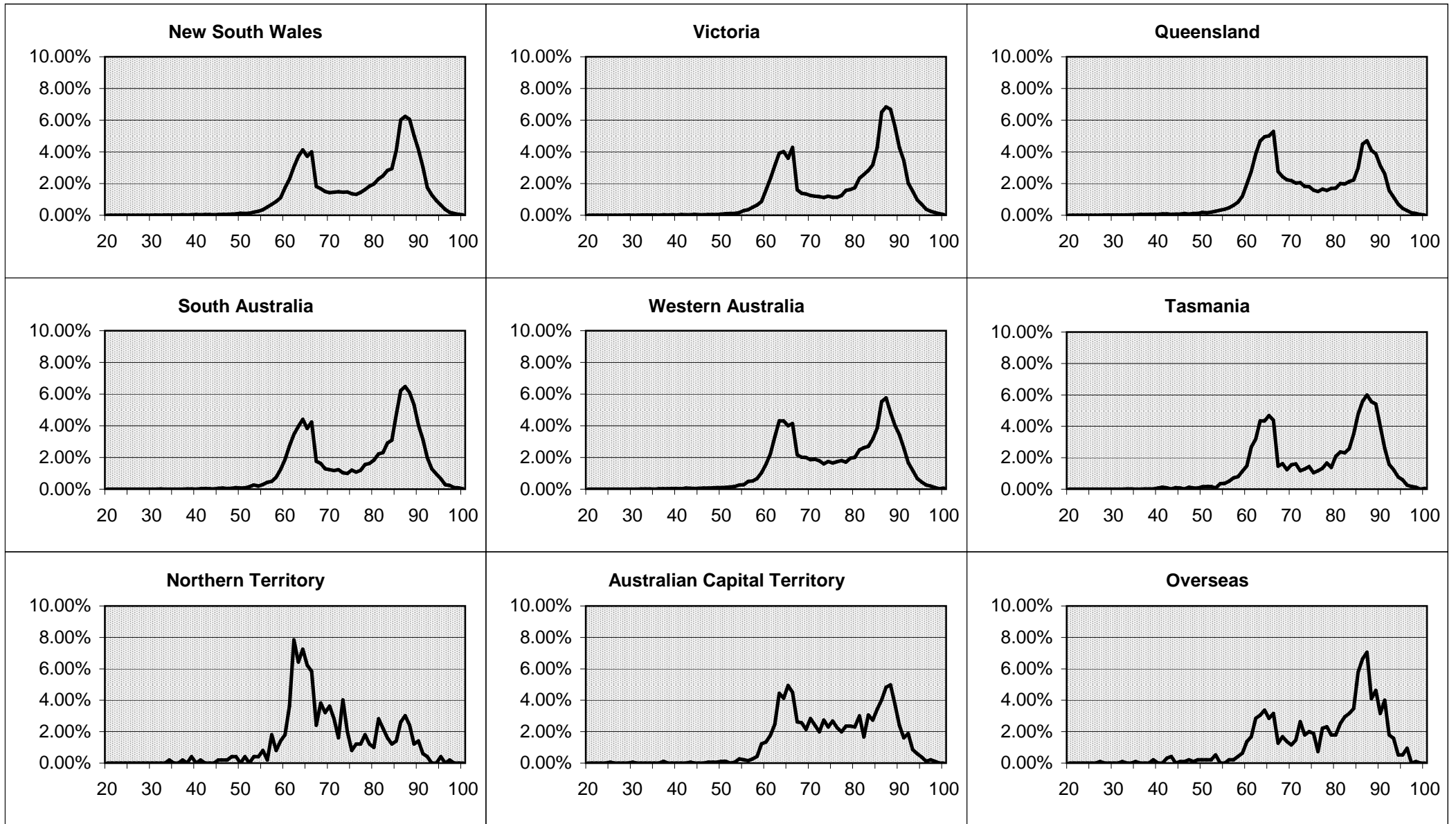
	Dec 10	Dec 11	Change
1. WWII	37,291	31,491	-15.55%
2. Korea/Malaya/FESR	8,334	7,981	-4.24%
3. Vietnam	30,469	31,081	2.01%
4. Gulf War	52	57	9.62%
5. East Timor	222	245	10.36%
6. Other Post 1972	187	207	10.70%
7. Defence/P'keeping			
8. Comm' & Allied	15,340	14,271	-6.97%

### Disability Pensioners

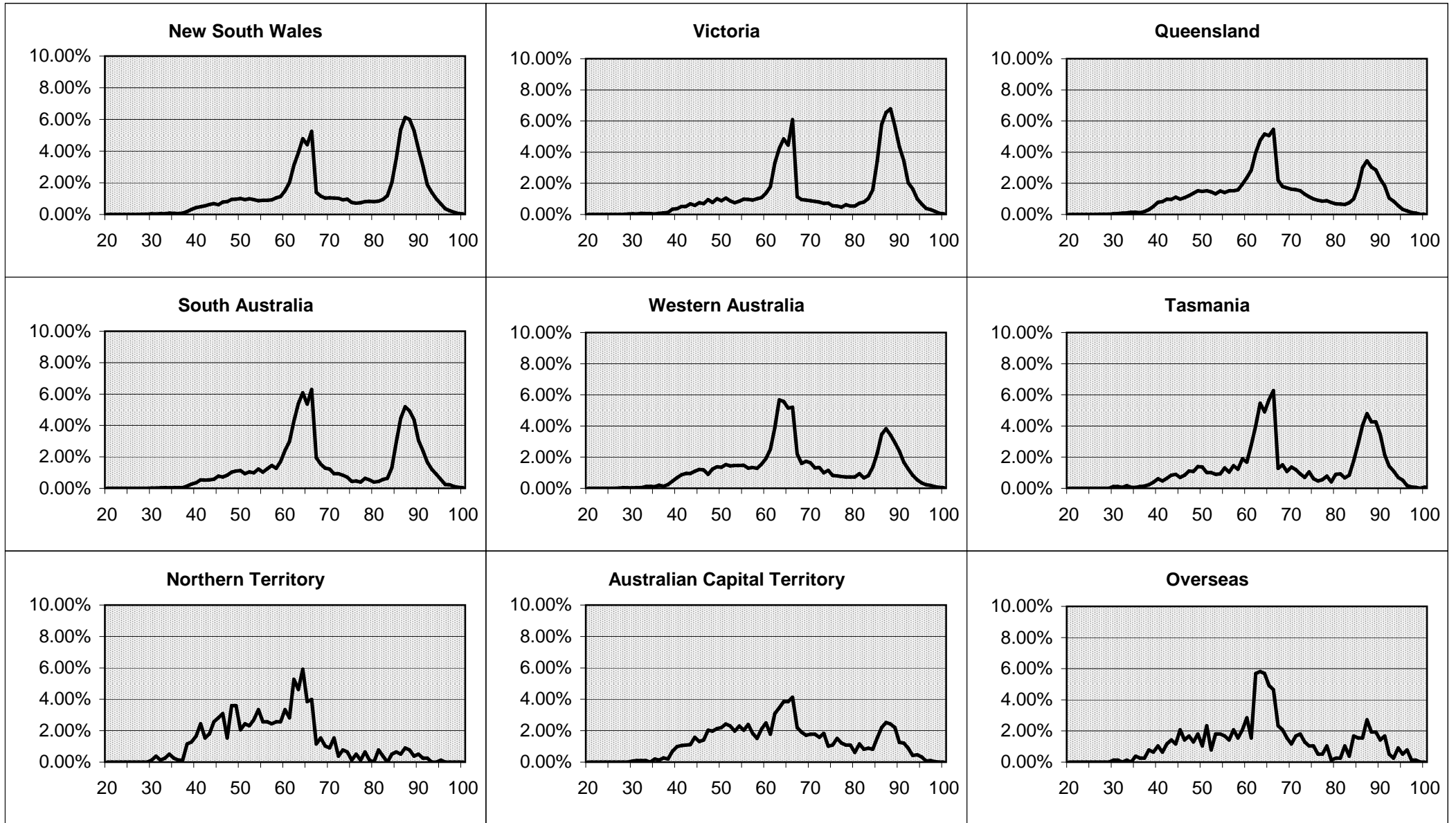
	Dec 10	Dec 11	Change
1. WWII	43,925	37,666	-14.25%
2. Korea/Malaya/FESR	10,544	10,261	-2.68%
3. Vietnam	32,473	32,469	-0.01%
4. Gulf War	421	460	9.26%
5. East Timor	2,133	2,272	6.52%
6. Other Post 1972	1,036	1,087	4.92%
7. Defence/P'keeping	28,684	29,091	1.42%
8. Comm' & Allied			



**Chart 1: Service Pensioners by State and by Age - December 2011**

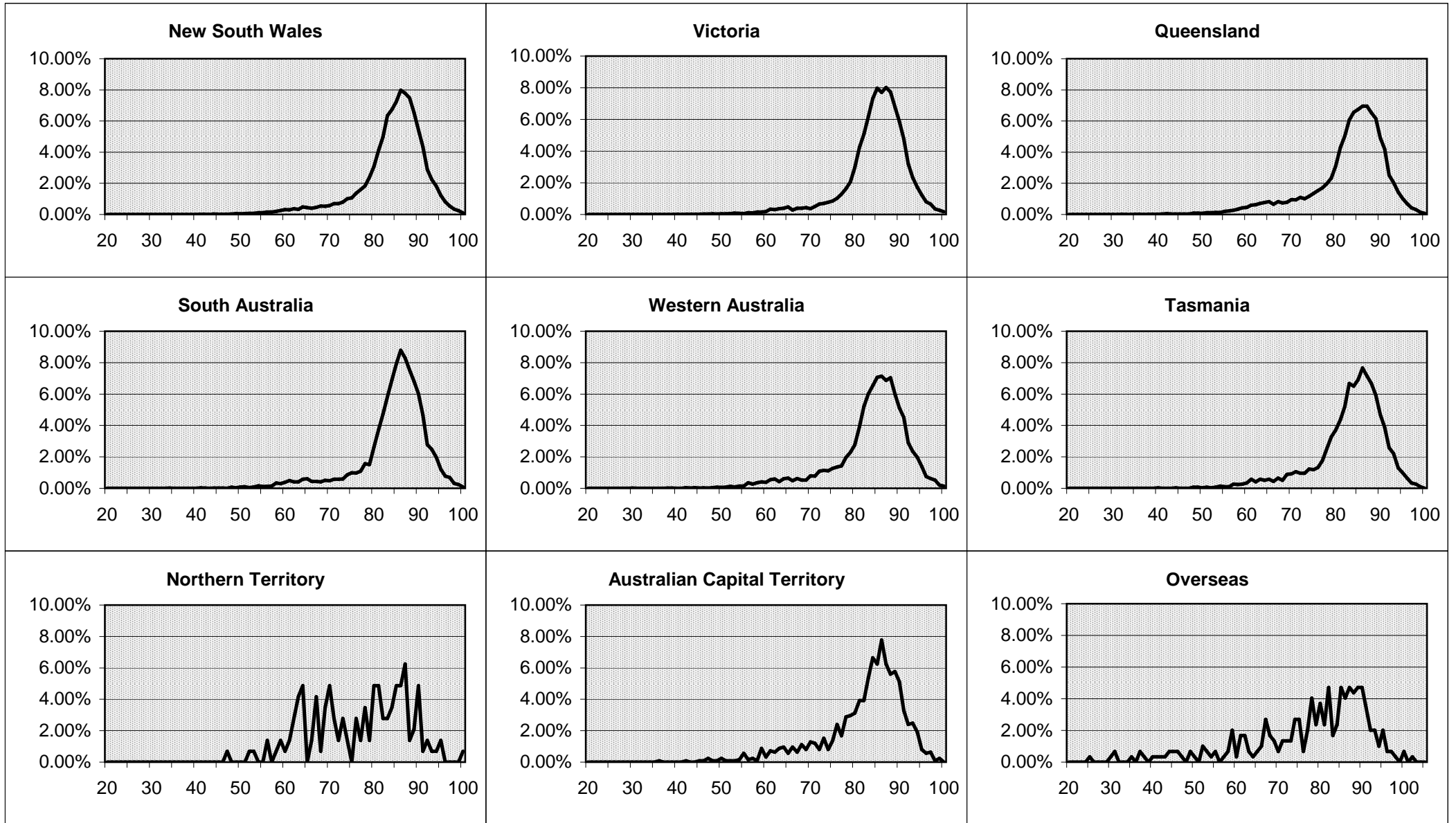


**Chart 2: Disability Pensioners by State and by Age - December 2011**

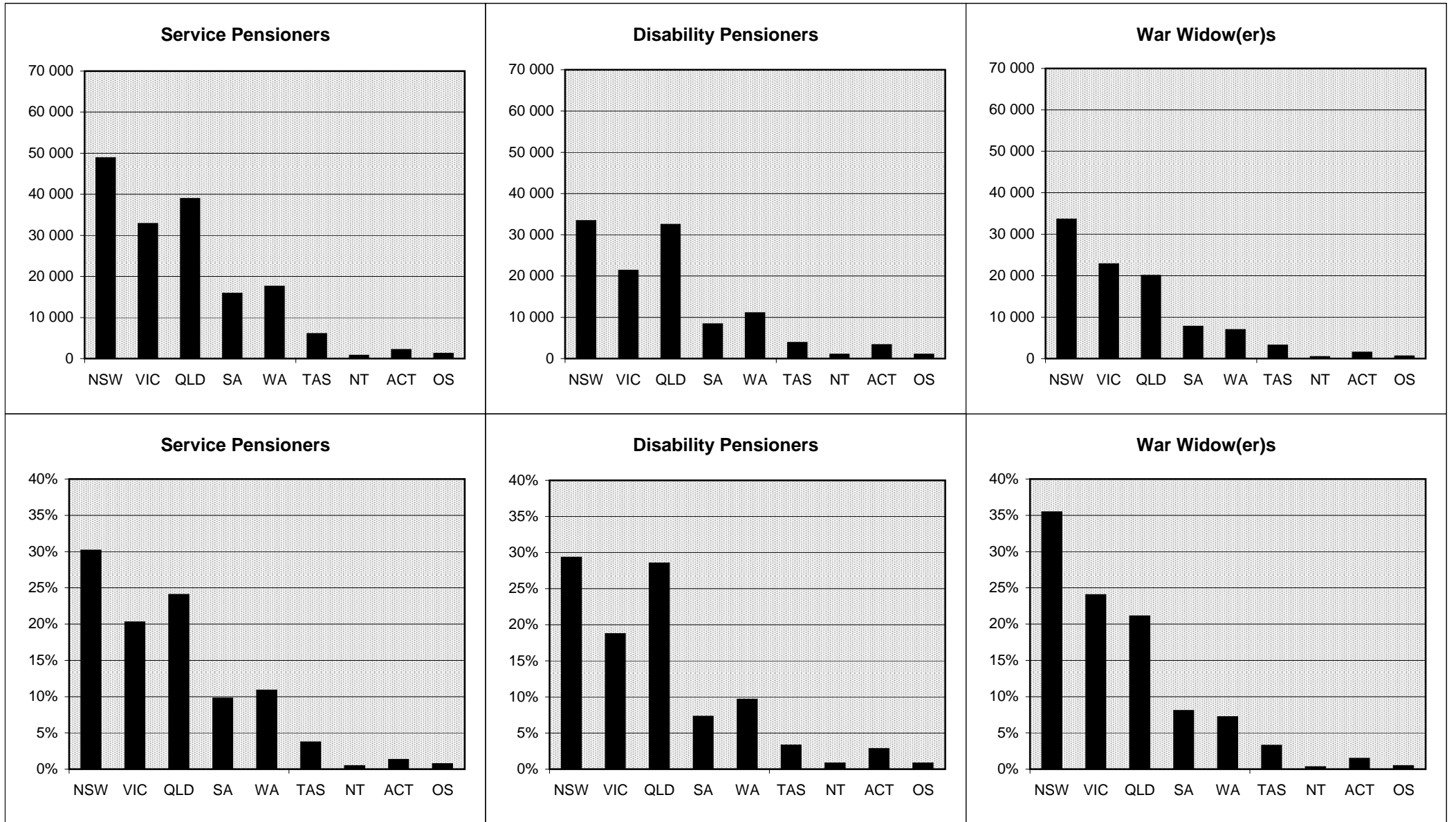




**Chart 3: War Widow(er) Pensioners by State and by Age - December 2011**



**Chart 4: Service, Disability and War Widow(er) Pensioners by State - December 2011**



**Table 01: Service Pensioners by Classification - Yearly and Quarterly Time Series**

	Old Age	Permanently Incapacitated	Tuberculosis	Total Veterans	Partners/ Widow(er)s	Total Service Pensioners
<b>At the end of June 2001</b>	146 098	15 431	126	161 655	129 040	290 695
<b>2002</b>	138 066	16 922	111	155 099	124 419	279 518
<b>2003</b>	129 382	18 144	91	147 617	119 887	267 504
<b>2004</b>	119 803	18 854	83	138 740	114 011	252 751
<b>2005</b>	111 491	19 160	68	130 719	108 598	239 317
<b>2006</b>	103 273	19 121	64	122 458	103 110	225 568
<b>2007</b>	94 903	18 742	53	113 698	96 864	210 562
<b>2008</b>	89 893	18 641	46	108 580	93 959	202 539
<b>2009</b>	83 838	18 180	35	102 053	88 972	191 025
<b>2010</b>	79 521	15 812	30	95 363	83 879	179 242
<b>2011</b>	75 663	12 964	25	88 652	78 716	167 368
<b>December 2008</b>	86 394	18 445	43	104 882	91 213	196 095
<b>March 2009</b>	85 001	18 319	41	103 361	90 036	193 397
<b>June 2009</b>	83 838	18 180	35	102 053	88 972	191 025
<b>September 2009</b>	82 320	18 015	32	100 367	87 757	188 124
<b>December 2009</b>	81 012	17 765	32	98 809	86 594	185 403
<b>March 2010</b>	80 196	16 685	30	96 911	85 058	181 969
<b>June 2010</b>	79 521	15 812	30	95 363	83 879	179 242
<b>September 2010</b>	78 420	15 085	28	93 533	82 473	176 006
<b>December 2010</b>	77 670	14 317	27	92 014	81 305	173 319
<b>March 2011</b>	76 562	13 753	25	90 340	79 926	170 266
<b>June 2011</b>	75 663	12 964	25	88 652	78 716	167 368
<b>September 2011</b>	74 488	12 237	23	86 748	77 345	164 093
<b>December 2011</b>	74 067	11 387	22	85 476	76 361	161 837

Note: The source of data for this time series changed from February 1999. The source before February 1999 was IMS SAS jobs which read the Client Data Base (CDB) and the Payment Master File (PMF).

Since February 1999 the source is the DVA Ad hoc Information System, which reads extracts from the CDB.

Due to system changes data from April to August 2000 was unavailable. June 2000 data was estimated.

**Table 02: Disability Pensioners by Broad Rate Group - Yearly and Quarterly Time Series**

	Special Rate	Intermediate Rate	EDA	100% General Rate	10-95% General Rate	Total
<b>At end June 2001</b>	25 046	1 003	11 331	25 740	99 385	162 505
<b>2002</b>	26 423	984	12 510	25 225	94 283	159 425
<b>2003</b>	27 772	965	14 256	24 154	90 718	157 865
<b>2004</b>	28 449	973	14 603	23 337	87 240	154 602
<b>2005</b>	28 786	967	14 723	22 211	83 928	150 615
<b>2006</b>	28 955	933	14 259	21 188	80 211	145 546
<b>2007</b>	29 054	917	13 582	19 908	76 266	139 727
<b>2008</b>	29 428	880	12 946	18 716	72 341	134 311
<b>2009</b>	29 537	842	12 137	17 298	68 332	128 146
<b>2010</b>	29 478	825	11 315	16 170	64 567	122 355
<b>2011</b>	29 315	796	10 219	15 096	61 072	116 498
<b>December 2008</b>	29 474	852	12 500	17 981	70 193	131 000
<b>March 2009</b>	29 465	847	12 329	17 616	69 259	129 516
<b>June 2009</b>	29 537	842	12 137	17 298	68 332	128 146
<b>September 2009</b>	29 504	835	11 912	17 049	67 346	126 646
<b>December 2009</b>	29 499	823	11 758	16 774	66 358	125 212
<b>March 2010</b>	29 452	832	11 538	16 475	65 425	123 722
<b>June 2010</b>	29 478	825	11 315	16 170	64 567	122 355
<b>September 2010</b>	29 459	817	11 015	15 848	63 616	120 755
<b>December 2010</b>	29 437	814	10 784	15 666	62 735	119 436
<b>March 2011</b>	29 350	807	10 502	15 343	61 892	117 894
<b>June 2011</b>	29 315	796	10 219	15 096	61 072	116 498
<b>September 2011</b>	29 211	785	9 912	14 737	60 132	114 777
<b>December 2011</b>	29 217	784	9 673	14 478	59 386	113 538

Note: The source of data for this time series changed from February 1999. The source before February 1999 was IMS SAS jobs which read the Client Data Base (CDB) and the Payment Master File (PMF).

Since February 1999 the source is the DVA Ad hoc Information System, which reads extracts from the CDB.

Due to system changes data from April to August 2000 was unavailable. June 2000 data was estimated.

**Table 03: Dependants of Deceased Veterans by Pension Type - Yearly and Quarterly Time Series**

	<b>War Widow(er)s</b>	<b>Orphans</b>	<b>Total</b>
<b>At end June 2001</b>	110 656	382	111 038
<b>2002</b>	113 059	344	113 403
<b>2003</b>	114 235	298	114 533
<b>2004</b>	114 418	270	114 688
<b>2005</b>	114 239	239	114 478
<b>2006</b>	112 882	222	113 104
<b>2007</b>	110 590	198	110 788
<b>2008</b>	108 023	193	108 216
<b>2009</b>	104 760	201	104 961
<b>2010</b>	101 090	190	101 280
<b>2011</b>	96 761	187	96 948
<b>December 2008</b>	106 273	203	106 476
<b>March 2009</b>	105 488	201	105 689
<b>June 2009</b>	104 760	201	104 961
<b>September 2009</b>	103 840	200	104 040
<b>December 2009</b>	103 022	196	103 218
<b>March 2010</b>	102 075	194	102 269
<b>June 2010</b>	101 090	190	101 280
<b>September 2010</b>	99 982	192	100 174
<b>December 2010</b>	98 989	194	99 183
<b>March 2011</b>	97 881	192	98 073
<b>June 2011</b>	96 761	187	96 948
<b>September 2011</b>	95 317	178	95 495
<b>December 2011</b>	94 352	172	94 524

Note: The source of data for this time series changed from February 1999. The source before February 1999 was IMS SAS jobs which read the Client Data Base (CDB) and the Payment Master File (PMF). Since February 1999 the source is the DVA Ad hoc Information System, which reads extracts from the CDB.

Due to system changes data from April to August 2000 was unavailable. June 2000 data was estimated.

**Table 04: ISS Recipients  
Yearly and Quarterly Time Series**

	<b>Income Support Supplement</b>
<b>At end June 2001</b>	79 491
<b>2002</b>	83 741
<b>2003</b>	86 443
<b>2004</b>	88 269
<b>2005</b>	88 493
<b>2006</b>	87 003
<b>2007</b>	84 471
<b>2008</b>	82 550
<b>2009</b>	80 521
<b>2010</b>	77 584
<b>2011</b>	73 970
<b>December 2008</b>	81 465
<b>March 2009</b>	80 968
<b>June 2009</b>	80 521
<b>September 2009</b>	79 900
<b>December 2009</b>	79 286
<b>March 2010</b>	78 322
<b>June 2010</b>	77 584
<b>September 2010</b>	76 674
<b>December 2010</b>	75 864
<b>March 2011</b>	74 920
<b>June 2011</b>	73 970
<b>September 2011</b>	72 750
<b>December 2011</b>	71 978

**Table 04A: Social Security Age Pensioners  
Yearly and Quarterly Time Series**

	<b>Social Security Age Pension</b>
<b>At end June 2001</b>	7 872
<b>2002</b>	7 462
<b>2003</b>	7 095
<b>2004</b>	6 663
<b>2005</b>	6 526
<b>2006</b>	6 385
<b>2007</b>	6 068
<b>2008</b>	5 896
<b>2009</b>	5 572
<b>2010</b>	5 167
<b>2011</b>	4 779
<b>December 2008</b>	5 755
<b>March 2009</b>	5 676
<b>June 2009</b>	5 572
<b>September 2009</b>	5 474
<b>December 2009</b>	5 389
<b>March 2010</b>	5 278
<b>June 2010</b>	5 167
<b>September 2010</b>	5 076
<b>December 2010</b>	4 956
<b>March 2011</b>	4 830
<b>June 2011</b>	4 779
<b>September 2011</b>	4 685
<b>December 2011</b>	4 590

Note: The source of data for this time series changed from February 1999. The source before February 1999 was IMS SAS jobs which read the Client Data Base (CDB) and the Payment Master File (PMF). Since February 1999 the source is the DVA Ad hoc Information System, which reads extracts from the CDB.

Due to system changes data from April to August 2000 was unavailable. June 2000 data was estimated.

**Table 05: Veteran Service Pensioners by Conflict and State - December 2011**

	<b>NSW</b>	<b>VIC</b>	<b>QLD</b>	<b>SA</b>	<b>WA</b>	<b>TAS</b>	<b>NT</b>	<b>ACT</b>	<b>O'seas</b>	<b>Total</b>
<b>Second World War</b>	10 276	7 418	6 226	2 812	2 604	1 314	34	254	26	30 964
<b>Korea and Malayan Forces</b>	1 810	847	1 425	323	496	179	22	59	21	5 182
<b>Far East Strategic Reserve</b>	883	393	767	224	356	80	28	59	9	2 799
<b>Vietnam</b>	7 926	4 935	9 987	2 780	3 477	1 189	180	442	165	31 081
<b>British Commonwealth</b>	1 962	1 489	1 567	1 188	1 209	198	17	58	170	7 858
<b>Allied Veterans</b>	2 697	1 749	495	391	404	39	11	59	93	5 938
<b>British Commonwealth &amp;</b>										
<b>Allied Mariners</b>	153	79	93	53	69	15	3	3	7	475
<b>Australian Mariners</b>	225	72	110	43	52	19	1	4	1	527
<b>Gulf War</b>	26	6	15	1	5	1	0	1	2	57
<b>East Timor</b>	58	35	116	10	11	9	4	1	1	245
<b>Other Post 1972 Conflicts</b>	48	31	86	8	17	13	0	2	2	207
<b>Unknown</b>	34	24	53	10	10	3	2	7	0	143
<b>All Wars and Conflicts</b>	26 098	17 078	20 940	7 843	8 710	3 059	302	949	497	85 476

Note: Conflict has been determined using SP Entitlement code. Please see Conflict Groupings note on first page.  
Source: DVA Ad hoc Information System.

**Table 06: Veteran Service Pensioners by Conflict and Age Group - December 2011**

	Under 55	55 to 59	60 to 64	65 to 69	70 to 74	75 to 79	80 to 84	85 to 89	90 or over	Total	Ave Age
<b>Second World War</b>	0	0	0	0	0	0	388	19 495	11 081	30 964	88.9
<b>Korea and Malayan Forces</b>	0	0	13	112	433	1 827	2 364	404	29	5 182	79.5
<b>Far East Strategic Reserve</b>	0	0	61	477	1 201	719	300	37	4	2 799	73.5
<b>Vietnam</b>	76	350	12 119	12 402	3 746	1 499	739	139	11	31 081	66.4
<b>British Commonwealth</b>	0	0	42	188	230	747	761	4 082	1 808	7 858	85.6
<b>Allied Veterans</b>	0	393	1 681	1 350	760	389	397	633	335	5 938	70.8
<b>British Commonwealth &amp; Allied Mariners</b>	0	0	0	0	0	0	117	293	65	475	86.4
<b>Australian Mariners</b>	0	0	1	2	0	0	148	264	112	527	86.6
<b>Gulf War</b>	39	4	13	1	0	0	0	0	0	57	50.5
<b>East Timor</b>	197	20	23	5	0	0	0	0	0	245	45.6
<b>Other Post 1972 Conflicts</b>	145	29	28	5	0	0	0	0	0	207	49.3
<b>Unknown</b>	1	5	19	49	37	15	16	1	0	143	69.8
<b>All Wars and Conflicts</b>	458	801	14 000	14 591	6 407	5 196	5 230	25 348	13 445	85 476	77.8

Note: Conflict has been determined using SP Entitlement code. Please see Conflict Groupings note on first page.  
Source: DVA Ad hoc Information System.



**Table 07: Income Support Beneficiaries by State, Benefit Entitlement and Age Group - December 2011**

<b>Total</b>	<b>Under 55</b>	<b>55 to 59</b>	<b>60 to 64</b>	<b>65 to 69</b>	<b>70 to 74</b>	<b>75 to 79</b>	<b>80 to 84</b>	<b>85 to 89</b>	<b>90 or over</b>	<b>Total</b>	<b>Ave Age</b>
<b>Old Age</b>	0	1	3 871	14 591	6 407	5 196	5 228	25 336	13 437	74 067	80.3
<b>Permanently Incapacitated</b>											
<b>Under Pension Age</b>	458	800	10 129	0	0	0	0	0	0	11 387	61.6
<b>Tuberculosis</b>	0	0	0	0	0	0	2	12	8	22	88.4
<b>Total Veterans</b>	458	801	14 000	14 591	6 407	5 196	5 230	25 348	13 445	85 476	77.8
<b>Female Veterans</b>											
<b>(Included Above)</b>	18	5	21	33	25	16	25	351	283	777	85.8
<b>Partners/Widows</b>	2 111	4 439	11 889	8 180	6 108	7 036	14 174	16 458	5 966	76 361	75.5
<b>Total Service Pensioners</b>	2 569	5 240	25 889	22 771	12 515	12 232	19 404	41 806	19 411	161 837	76.7
<b>Income Support Supplement</b>	265	441	1 074	1 744	2 800	5 937	18 841	26 551	14 325	71 978	84.3
<b>Social Security Age Pensioners</b>	2	3	12	299	304	350	1 181	1 839	600	4 590	83.2
<b>Commonwealth Seniors Health</b>											
<b>Card holders</b>	0	0	478	944	496	477	1 067	2 192	1 032	6 686	80.6
<b>Net Total Income Support</b>	2 836	5 684	27 453	25 758	16 115	18 996	40 493	72 388	35 368	245 091	79.2
<b>New South Wales</b>											
	<b>Under 55</b>	<b>55 to 59</b>	<b>60 to 64</b>	<b>65 to 69</b>	<b>70 to 74</b>	<b>75 to 79</b>	<b>80 to 84</b>	<b>85 to 89</b>	<b>90 or over</b>	<b>Total</b>	<b>Ave Age</b>
<b>Old Age</b>	0	1	1 045	3 982	1 770	1 563	1 774	8 266	4 291	22 692	81.0
<b>Permanently Incapacitated</b>											
<b>Under Pension Age</b>	105	395	2 899	0	0	0	0	0	0	3 399	61.5
<b>Tuberculosis</b>	0	0	0	0	0	0	1	1	5	7	89.1
<b>Total Veterans</b>	105	396	3 944	3 982	1 770	1 563	1 775	8 267	4 296	26 098	78.5
<b>Female Veterans</b>											
<b>(Included Above)</b>	1	2	10	10	11	6	10	57	69	176	85.0
<b>Partners/Widows</b>	604	1 319	3 296	2 196	1 774	2 115	4 307	5 064	1 818	22 493	76.0
<b>Total Service Pensioners</b>	709	1 715	7 240	6 178	3 544	3 678	6 082	13 331	6 114	48 591	77.3
<b>Income Support Supplement</b>	83	139	337	554	923	2 170	6 732	9 620	5 062	25 620	84.4
<b>Social Security Age Pensioners</b>	2	2	4	70	65	103	437	662	199	1 544	83.9
<b>Commonwealth Seniors Health</b>											
<b>Card holders</b>	0	0	115	237	123	152	321	674	320	1 942	81.4
<b>Net Total Income Support</b>	794	1 856	7 696	7 039	4 655	6 103	13 572	24 287	11 695	77 697	79.9

Note: Column Totals may include unknown ages.  
Source: DVA Ad hoc Information System.

**Table 07: Income Support Beneficiaries by State, Benefit Entitlement and Age Group - December 2011**

<b>Victoria</b>	<b>Under 55</b>	<b>55 to 59</b>	<b>60 to 64</b>	<b>65 to 69</b>	<b>70 to 74</b>	<b>75 to 79</b>	<b>80 to 84</b>	<b>85 to 89</b>	<b>90 or over</b>	<b>Total</b>	<b>Ave Age</b>
<b>Old Age</b>	0	0	1 024	2 632	971	803	912	5 814	3 161	15 317	81.2
<b>Permanently Incapacitated</b>											
<b>Under Pension Age</b>	68	85	1 603	0	0	0	0	0	0	1 756	61.7
<b>Tuberculosis</b>	0	0	0	0	0	0	0	4	1	5	88.0
<b>Total Veterans</b>	68	85	2 627	2 632	971	803	912	5 818	3 162	17 078	79.2
<b>Female Veterans</b>											
<b>(Included Above)</b>	1	0	6	5	3	2	3	52	50	122	86.7
<b>Partners/Widows</b>	280	783	2 241	1 347	964	1 379	3 206	3 918	1 361	15 479	77.1
<b>Total Service Pensioners</b>	348	868	4 868	3 979	1 935	2 182	4 118	9 736	4 523	32 557	78.2
<b>Income Support Supplement</b>	41	71	188	294	489	1 181	4 500	6 535	3 636	16 935	85.0
<b>Social Security Age Pensioners</b>	0	0	1	36	45	62	266	472	171	1 053	84.6
<b>Commonwealth Seniors Health</b>											
<b>Card holders</b>	0	0	92	172	62	77	251	533	282	1 469	82.2
<b>Net Total Income Support</b>	389	939	5 149	4 481	2 531	3 502	9 135	17 276	8 612	52 014	80.6
<b>Queensland</b>											
	<b>Under 55</b>	<b>55 to 59</b>	<b>60 to 64</b>	<b>65 to 69</b>	<b>70 to 74</b>	<b>75 to 79</b>	<b>80 to 84</b>	<b>85 to 89</b>	<b>90 or over</b>	<b>Total</b>	<b>Ave Age</b>
<b>Old Age</b>	0	0	881	4 293	2 083	1 525	1 186	4 901	2 810	17 679	78.6
<b>Permanently Incapacitated</b>											
<b>Under Pension Age</b>	198	164	2 891	0	0	0	0	0	0	3 253	61.3
<b>Tuberculosis</b>	0	0	0	0	0	0	1	5	2	8	88.3
<b>Total Veterans</b>	198	164	3 772	4 293	2 083	1 525	1 187	4 906	2 812	20 940	75.9
<b>Female Veterans</b>											
<b>(Included Above)</b>	11	1	2	7	4	5	6	52	50	138	83.2
<b>Partners/Widows</b>	671	1 189	3 291	2 564	1 741	1 567	2 692	2 889	1 150	17 754	73.2
<b>Total Service Pensioners</b>	869	1 353	7 063	6 857	3 824	3 092	3 879	7 795	3 962	38 694	74.7
<b>Income Support Supplement</b>	87	135	331	534	796	1 440	4 053	5 335	2 825	15 536	83.4
<b>Social Security Age Pensioners</b>	0	0	3	118	109	101	220	371	119	1 041	81.6
<b>Commonwealth Seniors Health</b>											
<b>Card holders</b>	0	0	120	245	141	101	184	325	147	1 263	78.2
<b>Net Total Income Support</b>	956	1 488	7 517	7 754	4 870	4 734	8 336	13 826	7 053	56 534	77.3

Note: Column Totals may include unknown ages.  
Source: DVA Ad hoc Information System.

**Table 07: Income Support Beneficiaries by State, Benefit Entitlement and Age Group - December 2011**

**South Australia**

	<b>Under 55</b>	<b>55 to 59</b>	<b>60 to 64</b>	<b>65 to 69</b>	<b>70 to 74</b>	<b>75 to 79</b>	<b>80 to 84</b>	<b>85 to 89</b>	<b>90 or over</b>	<b>Total</b>	<b>Ave Age</b>
<b>Old Age</b>	0	0	362	1 289	425	368	410	2 557	1 318	6 729	81.0
<b>Permanently Incapacitated</b>											
<b>Under Pension Age</b>	16	66	1 032	0	0	0	0	0	0	1 114	62.1
<b>Tuberculosis</b>	0	0	0	0	0	0	0	0	0	0	
<b>Total Veterans</b>	16	66	1 394	1 289	425	368	410	2 557	1 318	7 843	78.3
<b>Female Veterans</b>											
<b>(Included Above)</b>	1	0	1	2	1	1	2	21	22	51	87.2
<b>Partners/Widows</b>	182	435	1 164	695	455	666	1 516	1 938	683	7 734	76.6
<b>Total Service Pensioners</b>	198	501	2 558	1 984	880	1 034	1 926	4 495	2 001	15 577	77.5
<b>Income Support Supplement</b>	19	31	88	134	184	378	1 474	2 355	1 248	5 911	84.8
<b>Social Security Age Pensioners</b>	0	1	0	23	19	31	93	169	60	396	83.7
<b>Commonwealth Seniors Health</b>											
<b>Card holders</b>	0	0	46	77	29	30	94	226	89	591	81.2
<b>Net Total Income Support</b>	217	533	2 692	2 218	1 112	1 473	3 587	7 245	3 398	22 475	79.6

**Western Australia**

	<b>Under 55</b>	<b>55 to 59</b>	<b>60 to 64</b>	<b>65 to 69</b>	<b>70 to 74</b>	<b>75 to 79</b>	<b>80 to 84</b>	<b>85 to 89</b>	<b>90 or over</b>	<b>Total</b>	<b>Ave Age</b>
<b>Old Age</b>	0	0	340	1 568	760	662	602	2 371	1 198	7 501	79.6
<b>Permanently Incapacitated</b>											
<b>Under Pension Age</b>	43	48	1 118	0	0	0	0	0	0	1 209	61.9
<b>Tuberculosis</b>	0	0	0	0	0	0	0	0	0	0	
<b>Total Veterans</b>	43	48	1 458	1 568	760	662	602	2 371	1 198	8 710	77.2
<b>Female Veterans</b>											
<b>(Included Above)</b>	0	1	2	4	4	1	2	50	50	114	87.9
<b>Partners/Widows</b>	235	469	1 260	911	779	870	1 639	1 784	664	8 611	75.6
<b>Total Service Pensioners</b>	278	517	2 718	2 479	1 539	1 532	2 241	4 155	1 862	17 321	76.4
<b>Income Support Supplement</b>	21	41	78	131	239	430	1 266	1 696	1 029	4 931	84.0
<b>Social Security Age Pensioners</b>	0	0	2	41	45	32	107	140	41	408	81.7
<b>Commonwealth Seniors Health</b>											
<b>Card holders</b>	0	0	79	125	78	77	160	330	146	995	80.6
<b>Net Total Income Support</b>	299	558	2 877	2 776	1 901	2 071	3 774	6 321	3 078	23 655	78.3

Note: Column Totals may include unknown ages.  
Source: DVA Ad hoc Information System.

**Table 07: Income Support Beneficiaries by State, Benefit Entitlement and Age Group - December 2011**

<b>Tasmania</b>											
	<b>Under 55</b>	<b>55 to 59</b>	<b>60 to 64</b>	<b>65 to 69</b>	<b>70 to 74</b>	<b>75 to 79</b>	<b>80 to 84</b>	<b>85 to 89</b>	<b>90 or over</b>	<b>Total</b>	<b>Ave Age</b>
<b>Old Age</b>	0	0	125	516	189	130	200	1 007	472	2 639	80.8
<b>Permanently Incapacitated</b>											
<b>Under Pension Age</b>	16	23	379	0	0	0	0	0	0	418	61.7
<b>Tuberculosis</b>	0	0	0	0	0	0	0	2	0	2	87.5
<b>Total Veterans</b>	16	23	504	516	189	130	200	1 009	472	3 059	78.2
<b>Female Veterans</b>											
<b>(Included Above)</b>	2	0	0	4	1	0	1	114	39	161	87.3
<b>Partners/Widows</b>	85	181	423	260	219	251	544	572	190	2 725	75.3
<b>Total Service Pensioners</b>	101	204	927	776	408	381	744	1 581	662	5 784	76.8
<b>Income Support Supplement</b>	5	15	39	70	130	266	671	801	398	2 395	83.4
<b>Social Security Age Pensioners</b>	0	0	2	4	13	15	36	20	8	98	80.7
<b>Commonwealth Seniors Health</b>											
<b>Card holders</b>	0	0	9	16	8	12	23	46	27	141	81.9
<b>Net Total Income Support</b>	106	219	977	866	559	674	1 474	2 448	1 095	8 418	78.8
<b>Northern Territory</b>											
	<b>Under 55</b>	<b>55 to 59</b>	<b>60 to 64</b>	<b>65 to 69</b>	<b>70 to 74</b>	<b>75 to 79</b>	<b>80 to 84</b>	<b>85 to 89</b>	<b>90 or over</b>	<b>Total</b>	<b>Ave Age</b>
<b>Old Age</b>	0	0	36	74	44	18	19	34	14	239	73.3
<b>Permanently Incapacitated</b>											
<b>Under Pension Age</b>	3	8	52	0	0	0	0	0	0	63	60.9
<b>Tuberculosis</b>	0	0	0	0	0	0	0	0	0	0	
<b>Total Veterans</b>	3	8	88	74	44	18	19	34	14	302	70.7
<b>Female Veterans</b>											
<b>(Included Above)</b>	1	1	0	0	0	0	0	1	2	5	73.6
<b>Partners/Widows</b>	15	17	46	33	26	13	25	19	1	195	68.9
<b>Total Service Pensioners</b>	18	25	134	107	70	31	44	53	15	497	70.0
<b>Income Support Supplement</b>	3	2	3	10	12	10	14	17	7	78	77.2
<b>Social Security Age Pensioners</b>	0	0	0	3	1	0	4	0	0	8	75.4
<b>Commonwealth Seniors Health</b>											
<b>Card holders</b>	0	0	4	5	2	5	4	4	2	26	75.7
<b>Net Total Income Support</b>	21	27	141	125	85	46	66	74	24	609	71.2

Note: Column Totals may include unknown ages.  
Source: DVA Ad hoc Information System.

**Table 07: Income Support Beneficiaries by State, Benefit Entitlement and Age Group - December 2011**

**Australian Capital Territory**

	Under 55	55 to 59	60 to 64	65 to 69	70 to 74	75 to 79	80 to 84	85 to 89	90 or over	Total	Ave Age
<b>Old Age</b>	0	0	47	173	128	98	81	231	102	860	78.3
<b>Permanently Incapacitated</b>											
<b>Under Pension Age</b>	2	6	81	0	0	0	0	0	0	89	62.0
<b>Tuberculosis</b>	0	0	0	0	0	0	0	0	0	0	
<b>Total Veterans</b>	2	6	128	173	128	98	81	231	102	949	76.8
<b>Female Veterans</b>											
<b>(Included Above)</b>	0	0	0	1	1	1	1	3	0	7	79.9
<b>Partners/Widows</b>	16	37	136	140	101	119	157	161	50	917	74.8
<b>Total Service Pensioners</b>	18	43	264	313	229	217	238	392	152	1 866	75.8
<b>Income Support Supplement</b>	4	5	7	12	19	55	122	182	112	518	84.2
<b>Social Security Age Pensioners</b>	0	0	0	4	5	6	16	5	2	38	79.5
<b>Commonwealth Seniors Health</b>											
<b>Card holders</b>	0	0	13	67	53	23	30	53	19	258	76.4
<b>Net Total Income Support</b>	22	48	284	396	306	301	406	632	285	2 680	77.5

**Overseas**

	Under 55	55 to 59	60 to 64	65 to 69	70 to 74	75 to 79	80 to 84	85 to 89	90 or over	Total	Ave Age
<b>Old Age</b>	0	0	11	64	37	29	44	155	71	411	81.4
<b>Permanently Incapacitated</b>											
<b>Under Pension Age</b>	7	5	74	0	0	0	0	0	0	86	60.8
<b>Tuberculosis</b>	0	0	0	0	0	0	0	0	0	0	
<b>Total Veterans</b>	7	5	85	64	37	29	44	155	71	497	77.8
<b>Female Veterans</b>											
<b>(Included Above)</b>	1	0	0	0	0	0	0	1	1	3	75.0
<b>Partners/Widows</b>	23	9	32	34	49	56	88	113	49	453	77.9
<b>Total Service Pensioners</b>	30	14	117	98	86	85	132	268	120	950	77.8
<b>Income Support Supplement</b>	2	2	3	5	8	7	9	10	8	54	78.2
<b>Social Security Age Pensioners</b>	0	0	0	0	2	0	2	0	0	4	77.8
<b>Commonwealth Seniors Health</b>											
<b>Card holders</b>	0	0	0	0	0	0	0	1	0	1	88.0
<b>Net Total Income Support</b>	32	16	120	103	96	92	143	279	128	1 009	77.9

Note: Column Totals may include unknown ages.  
Source: DVA Ad hoc Information System.

**Table 08: Service Pensioners by Rate, Rate Level and State - December 2011**

			NSW	VIC	QLD	SA	WA	TAS	NT	ACT	O'seas	Total	
<b>Married</b>	<b>Less than</b>	<b>Persons</b>	12 197	8 354	12 678	3 729	4 987	1 539	152	1 066	205	44 907	
	<b>Maximum</b>	<b>Ave' payment</b>	\$343.03	\$345.02	\$342.52	\$346.92	\$345.31	\$351.30	\$330.21	\$242.13	\$375.48	\$341.83	
	<b>Maximum</b>	<b>Persons</b>	18 030	11 037	13 272	5 458	5 769	1 986	134	262	175	56 123	
		<b>Ave' payment</b>	\$519.47	\$519.43	\$519.44	\$519.49	\$519.61	\$519.40	\$519.40	\$519.40	\$519.40	\$527.15	\$519.49
	<b>Total</b>	<b>Persons</b>	30 227	19 391	25 950	9 187	10 756	3 525	286	1 328	380	101 030	
		<b>Ave' payment</b>	\$448.27	\$444.29	\$433.01	\$449.45	\$438.79	\$446.01	\$418.85	\$296.83	\$445.33	\$440.52	
<b>Single</b>	<b>Less than</b>	<b>Persons</b>	6 814	5 351	4 885	2 473	2 744	906	77	304	290	23 844	
	<b>Maximum</b>	<b>Ave' payment</b>	\$492.47	\$494.15	\$482.44	\$499.34	\$480.42	\$471.30	\$423.33	\$375.51	\$526.56	\$488.01	
	<b>Maximum</b>	<b>Persons</b>	11 543	7 808	7 848	3 911	3 816	1 353	134	234	280	36 927	
		<b>Ave' payment</b>	\$689.00	\$689.00	\$689.00	\$689.00	\$689.00	\$689.00	\$689.00	\$689.00	\$689.00	\$689.00	\$689.00
	<b>Total</b>	<b>Persons</b>	18 357	13 159	12 733	6 384	6 560	2 259	211	538	570	60 771	
		<b>Ave' payment</b>	\$616.05	\$609.76	\$609.75	\$615.53	\$601.75	\$601.69	\$592.05	\$511.86	\$606.35	\$610.14	
<b>Other</b>	<b>Fixed Rate</b>	<b>Persons</b>	7	7	11	6	5	0	0	0	0	36	
		<b>Ave' payment</b>	\$25.43	\$27.66	\$26.80	\$28.90	\$31.22					\$27.66	
<b>Total</b>	<b>Less than</b>	<b>Persons</b>	19 011	13 705	17 563	6 202	7 731	2 445	229	1 370	495	68 751	
	<b>Maximum</b>	<b>Ave' payment</b>	\$396.59	\$403.24	\$381.44	\$407.70	\$393.26	\$395.76	\$361.52	\$271.72	\$463.99	\$392.53	
	<b>Maximum</b>	<b>Persons</b>	29 573	18 845	21 120	9 369	9 585	3 339	268	496	455	93 050	
		<b>Ave' payment</b>	\$585.64	\$589.69	\$582.45	\$590.25	\$587.05	\$588.12	\$604.20	\$599.41	\$626.75	\$586.76	
	<b>Fixed Rate</b>	<b>Persons</b>	7	7	11	6	5	0	0	0	0	36	
		<b>Ave' payment</b>	\$25.43	\$27.66	\$26.80	\$28.90	\$31.22					\$27.66	
<b>Total</b>	<b>Persons</b>	48 591	32 557	38 694	15 577	17 321	5 784	497	1 866	950	161 837		
	<b>Ave' payment</b>	\$511.59	\$511.08	\$491.05	\$517.35	\$500.39	\$506.81	\$492.38	\$358.83	\$541.94	\$504.12		

Source: DVA Ad hoc Information System.

**Table 09: Disability Pensioners by Rate and State - December 2011**

		NSW	VIC	QLD	SA	WA	TAS	NT	ACT	O'seas	Total
<b>General Rate</b>	<b>010</b>	2 044	1 408	2 180	591	790	172	80	444	65	7 774
	<b>015</b>	40	34	14	21	27	2	2	1	4	145
	<b>020</b>	1 847	1 314	2 172	585	707	191	78	322	68	7 284
	<b>025</b>	26	16	6	6	11	3	0	4	1	73
	<b>030</b>	2 260	1 596	2 584	651	946	262	93	421	71	8 884
	<b>035</b>	5	5	1	1	1	0	0	0	0	13
	<b>040</b>	2 431	1 680	2 680	623	833	289	81	329	64	9 010
	<b>045</b>	1	2	0	0	1	0	0	0	0	4
	<b>050</b>	1 826	1 276	1 784	414	576	231	54	222	57	6 440
	<b>055</b>	1	0	0	1	2	0	0	0	0	4
	<b>060</b>	1 773	1 185	1 704	394	580	186	46	202	41	6 111
	<b>065</b>	0	1	0	0	0	0	0	0	0	1
	<b>070</b>	1 211	775	1 138	289	341	127	39	92	26	4 038
	<b>075</b>	3	1	2	2	2	0	0	0	0	10
	<b>080</b>	1 501	948	1 264	308	429	141	30	137	35	4 793
	<b>085</b>	0	0	1	0	2	0	0	0	0	3
	<b>090</b>	1 473	727	1 432	309	496	163	51	105	43	4 799
	<b>095</b>	0	0	0	0	0	0	0	0	0	0
	<b>100</b>	4 876	2 976	3 562	918	1 339	400	63	284	60	14 478
	<b>EDA</b>	3 495	2 625	2 315	531	423	184	9	73	18	9 673
<b>Total</b>		24 813	16 569	22 839	5 644	7 506	2 351	626	2 636	553	83 537
<b>Intermediate</b>	<b>Intermediate</b>	240	115	227	73	75	24	4	15	11	784
	<b>Total</b>	240	115	227	73	75	24	4	15	11	784
<b>Special Rate</b>	<b>Blind</b>	181	93	109	19	32	14	2	3	3	456
	<b>TPI</b>	7 867	4 331	8 999	2 372	3 189	1 195	145	389	205	28 692
	<b>TTI</b>	14	10	31	6	3	2	1	1	1	69
	<b>Total</b>	8 062	4 434	9 139	2 397	3 224	1 211	148	393	209	29 217
<b>Grand Total</b>		33 115	21 118	32 205	8 114	10 805	3 586	778	3 044	773	113 538

Source: DVA Ad hoc Information System.

**Table 10: Disability Pensioners by Rate and Conflict - December 2011**

		Second World War	Korea, Malaya & FESR	Vietnam	Gulf War	East Timor	Afghanistan	War in Iraq (2003)	Other Operations	Peace-keeping Forces	Serving Member	Not Stated	All Wars
<b>General Rate</b>	<b>010</b>	1 965	379	964	47	212	19	8	37	53	4 066	24	7 774
	<b>015</b>	130	4	8	0	0	0	0	0	0	3	0	145
	<b>020</b>	1 933	535	887	40	186	20	8	37	55	3 565	18	7 284
	<b>025</b>	64	4	2	0	0	0	0	0	0	3	0	73
	<b>030</b>	2 475	679	1 005	44	261	27	12	46	62	4 254	19	8 884
	<b>035</b>	13	0	0	0	0	0	0	0	0	0	0	13
	<b>040</b>	2 999	839	1 183	49	289	31	15	62	71	3 460	12	9 010
	<b>045</b>	3	1	0	0	0	0	0	0	0	0	0	4
	<b>050</b>	2 373	562	858	31	164	18	12	51	65	2 303	3	6 440
	<b>055</b>	4	0	0	0	0	0	0	0	0	0	0	4
	<b>060</b>	2 116	559	1 021	42	161	12	8	63	58	2 062	9	6 111
	<b>065</b>	1	0	0	0	0	0	0	0	0	0	0	1
	<b>070</b>	1 664	383	677	21	100	14	1	44	38	1 094	2	4 038
	<b>075</b>	8	0	0	0	0	0	0	0	0	2	0	10
	<b>080</b>	2 150	479	835	16	135	15	4	49	38	1 065	7	4 793
	<b>085</b>	2	1	0	0	0	0	0	0	0	0	0	3
	<b>090</b>	1 999	521	1 077	28	135	13	6	39	40	936	5	4 799
	<b>095</b>	0	0	0	0	0	0	0	0	0	0	0	0
	<b>100</b>	7 352	1 676	2 790	62	207	20	14	97	96	2 054	110	14 478
	<b>EDA</b>	7 849	1 332	416	0	0	0	0	0	5	64	7	9 673
<b>Total</b>	35 100	7 954	11 723	380	1 850	189	88	525	581	24 931	216	83 537	
<b>Inter-mediate</b>	<b>Inter-mediate</b>	130	60	312	3	14	2	0	7	7	249	0	784
	<b>Total</b>	130	60	312	3	14	2	0	7	7	249	0	784
<b>Special Rate</b>	<b>Blind</b>	414	23	15	0	0	0	0	0	0	4	0	456
	<b>TPI</b>	2 022	2 224	20 409	73	382	19	6	243	183	3 115	16	28 692
	<b>TTI</b>	0	0	10	4	26	1	3	4	2	19	0	69
	<b>Total</b>	2 436	2 247	20 434	77	408	20	9	247	185	3 138	16	29 217
<b>Grand Total</b>		37 666	10 261	32 469	460	2 272	211	97	779	773	28 318	232	113 538

Note: Conflict has been determined using earliest accepted disability conflict. Please see Conflict Groupings note on first page.  
Source: DVA Ad hoc Information System.



**Table 11: Disability Pensioners by Conflict, Rate Group and State - December 2011**

	NSW	VIC	QLD	SA	WA	TAS	NT	ACT	O'seas	Total	
<b>Second World War</b>	<b>General Rate - 10-45%</b>	3 135	2 337	1 732	927	932	263	10	199	47	9 582
	<b>General Rate - 50-95%</b>	3 785	2 480	2 009	768	773	329	7	114	52	10 317
	<b>General Rate - 100%</b>	2 875	1 803	1 346	460	546	211	7	92	12	7 352
	<b>General Rate - EDA</b>	2 907	2 283	1 693	442	317	143	5	53	6	7 849
	<b>Intermediate</b>	74	24	15	10	3	2	0	1	1	130
	<b>Special Rate</b>	1 006	469	440	129	148	197	4	34	9	2 436
	<b>Total</b>	13 782	9 396	7 235	2 736	2 719	1 145	33	493	127	37 666
	<b>Korea, Malaya &amp; FESR</b>	<b>General Rate - 10-45%</b>	666	369	710	162	323	80	13	102	16
<b>General Rate - 50-95%</b>		737	344	827	125	257	109	12	77	17	2 505
<b>General Rate - 100%</b>		549	216	505	105	197	57	2	37	8	1 676
<b>General Rate - EDA</b>		465	244	418	61	84	34	2	16	8	1 332
<b>Intermediate</b>		25	6	14	7	4	2	1	0	1	60
<b>Special Rate</b>		640	249	748	152	319	68	13	42	16	2 247
<b>Total</b>		3 082	1 428	3 222	612	1 184	350	43	274	66	10 261

Note: Conflict has been determined using earliest accepted disability conflict. Please see Conflict Groupings note on first page.  
Source: DVA Ad hoc Information System.

**Table 11: Disability Pensioners by Conflict, Rate Group and State - December 2011**

	NSW	VIC	QLD	SA	WA	TAS	NT	ACT	O'seas	Total
<b>Vietnam</b>										
General Rate - 10-45%	934	845	1 188	309	364	125	28	211	45	4 049
General Rate - 50-95%	1 163	863	1 303	356	390	142	45	156	50	4 468
General Rate - 100%	781	578	814	184	243	68	23	77	22	2 790
General Rate - EDA	107	85	166	24	21	5	1	3	4	416
Intermediate	86	59	87	23	38	6	3	7	3	312
Special Rate	5 503	3 257	6 258	1 854	2 277	787	96	253	149	20 434
<b>Total</b>	<b>8 574</b>	<b>5 687</b>	<b>9 816</b>	<b>2 750</b>	<b>3 333</b>	<b>1 133</b>	<b>196</b>	<b>707</b>	<b>273</b>	<b>32 469</b>
<b>Gulf War</b>										
General Rate - 10-45%	73	28	30	9	20	6	2	10	2	180
General Rate - 50-95%	48	15	39	4	14	3	4	9	2	138
General Rate - 100%	19	7	8	0	18	4	1	5	0	62
General Rate - EDA	0	0	0	0	0	0	0	0	0	0
Intermediate	0	0	1	0	0	1	0	0	1	3
Special Rate	36	9	18	1	6	1	0	3	3	77
<b>Total</b>	<b>176</b>	<b>59</b>	<b>96</b>	<b>14</b>	<b>58</b>	<b>15</b>	<b>7</b>	<b>27</b>	<b>8</b>	<b>460</b>

Note: Conflict has been determined using earliest accepted disability conflict. Please see Conflict Groupings note on first page.  
Source: DVA Ad hoc Information System.

**Table 11: Disability Pensioners by Conflict, Rate Group and State - December 2011**

	NSW	VIC	QLD	SA	WA	TAS	NT	ACT	O'seas	Total	
<b>East Timor</b>	<b>General Rate - 10-45%</b>	187	121	407	22	89	35	23	53	11	948
	<b>General Rate - 50-95%</b>	129	76	302	26	79	24	19	33	7	695
	<b>General Rate - 100%</b>	43	26	81	7	29	3	6	9	3	207
	<b>General Rate - EDA</b>	0	0	0	0	0	0	0	0	0	0
	<b>Intermediate</b>	3	1	6	1	1	0	0	1	1	14
	<b>Special Rate</b>	81	55	204	22	25	10	3	4	4	408
	<b>Total</b>	443	279	1 000	78	223	72	51	100	26	2 272
	<b>Afghanistan</b>	<b>General Rate - 10-45%</b>	29	7	20	1	22	5	2	10	1
<b>General Rate - 50-95%</b>		19	7	17	1	24	1	0	2	1	72
<b>General Rate - 100%</b>		6	1	5	1	3	0	1	3	0	20
<b>General Rate - EDA</b>		0	0	0	0	0	0	0	0	0	0
<b>Intermediate</b>		0	0	0	0	1	0	0	1	0	2
<b>Special Rate</b>		7	3	2	1	7	0	0	0	0	20
<b>Total</b>		61	18	44	4	57	6	3	16	2	211

Note: Conflict has been determined using earliest accepted disability conflict. Please see Conflict Groupings note on first page.  
Source: DVA Ad hoc Information System.

**Table 11: Disability Pensioners by Conflict, Rate Group and State - December 2011**

	NSW	VIC	QLD	SA	WA	TAS	NT	ACT	O'seas	Total	
<b>War in Iraq (2003)</b>	<b>General Rate - 10-45%</b>	14	7	13	2	2	1	1	3	0	43
	<b>General Rate - 50-95%</b>	11	4	7	2	3	0	0	4	0	31
	<b>General Rate - 100%</b>	2	4	5	2	1	0	0	0	0	14
	<b>General Rate - EDA</b>	0	0	0	0	0	0	0	0	0	0
	<b>Intermediate</b>	0	0	0	0	0	0	0	0	0	0
	<b>Special Rate</b>	3	1	3	1	1	0	0	0	0	9
	<b>Total</b>	30	16	28	7	7	1	1	7	0	97
	<b>Other Operations</b>										
<b>General Rate - 10-45%</b>	37	35	68	11	13	3	1	11	3	182	
<b>General Rate - 50-95%</b>	47	45	93	7	29	5	5	15	0	246	
<b>General Rate - 100%</b>	22	19	34	3	9	3	2	3	2	97	
<b>General Rate - EDA</b>	0	0	0	0	0	0	0	0	0	0	
<b>Intermediate</b>	0	0	3	1	2	1	0	0	0	7	
<b>Special Rate</b>	38	35	118	7	24	11	2	5	7	247	
<b>Total</b>	144	134	316	29	77	23	10	34	12	779	

Note: Conflict has been determined using earliest accepted disability conflict. Please see Conflict Groupings note on first page.  
Source: DVA Ad hoc Information System.

**Table 11: Disability Pensioners by Conflict, Rate Group and State - December 2011**

	NSW	VIC	QLD	SA	WA	TAS	NT	ACT	O'seas	Total		
<b>Peacekeeping Forces</b>	<b>General Rate - 10-45%</b>	57	37	100	7	11	5	5	14	5	241	
	<b>General Rate - 50-95%</b>	55	32	95	7	18	7	3	16	6	239	
	<b>General Rate - 100%</b>	29	9	26	6	14	3	2	6	1	96	
	<b>General Rate - EDA</b>	1	1	0	3	0	0	0	0	0	5	
	<b>Intermediate</b>	0	0	6	1	0	0	0	0	0	7	
	<b>Special Rate</b>	36	26	76	11	18	7	3	8	0	185	
	<b>Total</b>	178	105	303	35	61	22	13	44	12	773	
	<b>Serving Member</b>	<b>General Rate - 10-45%</b>	3 513	2 244	5 354	1 022	1 529	394	248	905	142	15 351
		<b>General Rate - 50-95%</b>	1 790	1 042	2 627	418	839	228	125	326	67	7 462
<b>General Rate - 100%</b>		523	289	714	130	272	46	19	50	11	2 054	
<b>General Rate - EDA</b>		13	10	35	1	1	2	1	1	0	64	
<b>Intermediate</b>		52	25	95	30	26	12	0	5	4	249	
<b>Special Rate</b>		707	327	1 269	218	398	127	27	44	21	3 138	
<b>Total</b>		6 598	3 937	10 094	1 819	3 065	809	420	1 331	245	28 318	

Note: Conflict has been determined using earliest accepted disability conflict. Please see Conflict Groupings note on first page.  
Source: DVA Ad hoc Information System.

**Table 11: Disability Pensioners by Conflict, Rate Group and State - December 2011**

	NSW	VIC	QLD	SA	WA	TAS	NT	ACT	O'seas	Total	
<b>Not Stated</b>	<b>General Rate - 10-45%</b>	9	25	15	6	11	2	1	3	1	73
	<b>General Rate - 50-95%</b>	4	5	6	3	2	0	0	6	0	26
	<b>General Rate - 100%</b>	27	24	24	20	7	5	0	2	1	110
	<b>General Rate - EDA</b>	2	2	3	0	0	0	0	0	0	7
	<b>Intermediate</b>	0	0	0	0	0	0	0	0	0	0
	<b>Special Rate</b>	5	3	3	1	1	3	0	0	0	16
	<b>Total</b>	47	59	51	30	21	10	1	11	2	232
	<b>All Wars and Conflicts</b>	<b>General Rate - 10-45%</b>	8 654	6 055	9 637	2 478	3 316	919	334	1 521	273
<b>General Rate - 50-95%</b>		7 788	4 913	7 325	1 717	2 428	848	220	758	202	26 199
<b>General Rate - 100%</b>		4 876	2 976	3 562	918	1 339	400	63	284	60	14 478
<b>General Rate - EDA</b>		3 495	2 625	2 315	531	423	184	9	73	18	9 673
<b>Intermediate</b>		240	115	227	73	75	24	4	15	11	784
<b>Special Rate</b>		8 062	4 434	9 139	2 397	3 224	1 211	148	393	209	29 217
<b>Total</b>		33 115	21 118	32 205	8 114	10 805	3 586	778	3 044	773	113 538

Note: Conflict has been determined using earliest accepted disability conflict. Please see Conflict Groupings note on first page.  
Source: DVA Ad hoc Information System.

**Table 12: Disability Pensioners by State, Age Group and Conflict - December 2011**

<b>Total</b>												
	<b>Second World War</b>	<b>Korea, Malaya &amp; FESR</b>	<b>Vietnam</b>	<b>Gulf War</b>	<b>East Timor</b>	<b>Afghanistan</b>	<b>War in Iraq (2003)</b>	<b>Other Operations</b>	<b>Peace-keeping Forces</b>	<b>Serving Member</b>	<b>Not Stated</b>	<b>All Wars</b>
<b>Under 55</b>	0	0	29	404	2 051	195	83	630	442	14 305	36	18 175
<b>55 to 59</b>	0	0	648	39	142	13	11	106	119	6 168	7	7 253
<b>60 to 64</b>	0	272	14 917	12	59	3	3	33	99	4 363	13	19 774
<b>65 to 69</b>	0	2 077	12 713	3	18	0	0	9	58	1 829	7	16 714
<b>70 to 74</b>	0	2 757	2 640	2	2	0	0	0	32	944	16	6 393
<b>75 to 79</b>	0	2 707	1 010	0	0	0	0	1	14	451	26	4 209
<b>80 to 84</b>	2 350	2 180	432	0	0	0	0	0	7	206	47	5 222
<b>85 to 89</b>	23 435	247	74	0	0	0	0	0	1	48	62	23 867
<b>90 or over</b>	11 881	21	6	0	0	0	0	0	1	4	18	11 931
<b>Unknown</b>	0	0	0	0	0	0	0	0	0	0	0	0
<b>Total</b>	37 666	10 261	32 469	460	2 272	211	97	779	773	28 318	232	113 538
<b>Average Age</b>	88.4	74.5	65.4	47.3	43.3	43.5	44.6	48.1	53.0	54.8	74.9	70.5

<b>New South Wales</b>												
	<b>Second World War</b>	<b>Korea, Malaya &amp; FESR</b>	<b>Vietnam</b>	<b>Gulf War</b>	<b>East Timor</b>	<b>Afghanistan</b>	<b>War in Iraq (2003)</b>	<b>Other Operations</b>	<b>Peace-keeping Forces</b>	<b>Serving Member</b>	<b>Not Stated</b>	<b>All Wars</b>
<b>Under 55</b>	0	0	2	153	398	53	26	117	99	3 321	1	4 170
<b>55 to 59</b>	0	0	181	13	34	7	2	18	21	1 348	0	1 624
<b>60 to 64</b>	0	98	3 860	7	7	1	2	7	20	1 059	0	5 061
<b>65 to 69</b>	0	495	3 439	1	3	0	0	2	17	428	0	4 385
<b>70 to 74</b>	0	728	659	2	1	0	0	0	14	248	4	1 656
<b>75 to 79</b>	0	873	272	0	0	0	0	0	5	115	8	1 273
<b>80 to 84</b>	922	780	137	0	0	0	0	0	2	63	16	1 920
<b>85 to 89</b>	8 571	98	22	0	0	0	0	0	0	15	16	8 722
<b>90 or over</b>	4 289	10	2	0	0	0	0	0	0	1	2	4 304
<b>Unknown</b>	0	0	0	0	0	0	0	0	0	0	0	0
<b>Total</b>	13 782	3 082	8 574	176	443	61	30	144	178	6 598	47	33 115
<b>Average Age</b>	88.4	75.4	65.4	48.4	43.5	44.0	42.6	48.4	54.2	55.0	81.3	73.3

Note: Conflict has been determined using earliest accepted disability conflict. Please see Conflict Groupings note on first page.  
Source: DVA Ad hoc Information System.

**Table 12: Disability Pensioners by State, Age Group and Conflict - December 2011**

Victoria												
	Second World War	Korea, Malaya & FESR	Vietnam	Gulf War	East Timor	Afghanistan	War in Iraq (2003)	Other Operations	Peace-keeping Forces	Serving Member	Not Stated	All Wars
Under 55	0	0	2	51	253	18	13	120	63	2 045	11	2 576
55 to 59	0	0	82	7	19	0	3	12	11	912	2	1 048
60 to 64	0	28	2 667	1	6	0	0	1	16	555	8	3 282
65 to 69	0	261	2 357	0	1	0	0	1	7	229	4	2 860
70 to 74	0	354	363	0	0	0	0	0	6	111	2	836
75 to 79	0	391	130	0	0	0	0	0	1	47	6	575
80 to 84	514	359	74	0	0	0	0	0	0	30	7	984
85 to 89	5 890	33	11	0	0	0	0	0	0	8	13	5 955
90 or over	2 992	2	1	0	0	0	0	0	1	0	6	3 002
Unknown	0	0	0	0	0	0	0	0	0	0	0	0
<b>Total</b>	<b>9 396</b>	<b>1 428</b>	<b>5 687</b>	<b>59</b>	<b>279</b>	<b>18</b>	<b>16</b>	<b>134</b>	<b>105</b>	<b>3 937</b>	<b>59</b>	<b>21 118</b>
<b>Average Age</b>	<b>88.5</b>	<b>75.1</b>	<b>65.2</b>	<b>46.8</b>	<b>42.7</b>	<b>42.0</b>	<b>44.4</b>	<b>46.9</b>	<b>52.5</b>	<b>54.4</b>	<b>72.5</b>	<b>73.7</b>

Queensland												
	Second World War	Korea, Malaya & FESR	Vietnam	Gulf War	East Timor	Afghanistan	War in Iraq (2003)	Other Operations	Peace-keeping Forces	Serving Member	Not Stated	All Wars
Under 55	0	0	13	82	907	40	24	251	190	4 877	8	6 392
55 to 59	0	0	202	9	55	3	3	46	51	2 199	3	2 571
60 to 64	0	66	4 296	4	30	1	1	18	38	1 687	4	6 145
65 to 69	0	671	3 801	1	8	0	0	1	14	726	1	5 223
70 to 74	0	960	977	0	0	0	0	0	6	365	4	2 312
75 to 79	0	881	365	0	0	0	0	0	3	173	4	1 426
80 to 84	430	576	133	0	0	0	0	0	1	55	10	1 205
85 to 89	4 431	64	26	0	0	0	0	0	0	10	12	4 543
90 or over	2 374	4	3	0	0	0	0	0	0	2	5	2 388
Unknown	0	0	0	0	0	0	0	0	0	0	0	0
<b>Total</b>	<b>7 235</b>	<b>3 222</b>	<b>9 816</b>	<b>96</b>	<b>1 000</b>	<b>44</b>	<b>28</b>	<b>316</b>	<b>303</b>	<b>10 094</b>	<b>51</b>	<b>32 205</b>
<b>Average Age</b>	<b>88.5</b>	<b>74.2</b>	<b>65.7</b>	<b>47.2</b>	<b>43.4</b>	<b>42.8</b>	<b>45.9</b>	<b>48.2</b>	<b>51.3</b>	<b>55.2</b>	<b>73.9</b>	<b>67.3</b>

Note: Conflict has been determined using earliest accepted disability conflict. Please see Conflict Groupings note on first page.  
Source: DVA Ad hoc Information System.



**Table 12: Disability Pensioners by State, Age Group and Conflict - December 2011**

**South Australia**

	Second World War	Korea, Malaya & FESR	Vietnam	Gulf War	East Timor	Afghanistan	War in Iraq (2003)	Other Operations	Peace-keeping Forces	Serving Member	Not Stated	All Wars
Under 55	0	0	3	11	66	2	6	22	13	926	3	1 052
55 to 59	0	0	63	3	8	1	1	6	8	451	2	543
60 to 64	0	28	1 420	0	3	1	0	1	3	258	0	1 714
65 to 69	0	193	1 030	0	1	0	0	0	5	103	0	1 332
70 to 74	0	166	159	0	0	0	0	0	1	46	2	374
75 to 79	0	120	54	0	0	0	0	0	4	20	2	200
80 to 84	150	90	17	0	0	0	0	0	0	13	3	273
85 to 89	1 743	14	4	0	0	0	0	0	1	1	13	1 776
90 or over	843	1	0	0	0	0	0	0	0	1	5	850
Unknown	0	0	0	0	0	0	0	0	0	0	0	0
<b>Total</b>	<b>2 736</b>	<b>612</b>	<b>2 750</b>	<b>14</b>	<b>78</b>	<b>4</b>	<b>7</b>	<b>29</b>	<b>35</b>	<b>1 819</b>	<b>30</b>	<b>8 114</b>
<b>Average Age</b>	<b>88.5</b>	<b>72.9</b>	<b>64.7</b>	<b>47.1</b>	<b>45.2</b>	<b>51.8</b>	<b>45.0</b>	<b>49.1</b>	<b>58.1</b>	<b>54.5</b>	<b>80.0</b>	<b>70.8</b>

**Western Australia**

	Second World War	Korea, Malaya & FESR	Vietnam	Gulf War	East Timor	Afghanistan	War in Iraq (2003)	Other Operations	Peace-keeping Forces	Serving Member	Not Stated	All Wars
Under 55	0	0	2	57	205	56	7	66	30	1 657	3	2 083
55 to 59	0	0	65	1	10	1	0	6	13	655	0	751
60 to 64	0	30	1 666	0	4	0	0	2	7	403	0	2 112
65 to 69	0	302	1 223	0	3	0	0	3	8	176	1	1 716
70 to 74	0	353	245	0	1	0	0	0	0	95	3	697
75 to 79	0	267	95	0	0	0	0	0	0	48	4	414
80 to 84	200	216	32	0	0	0	0	0	3	28	7	486
85 to 89	1 689	14	5	0	0	0	0	0	0	3	3	1 714
90 or over	830	2	0	0	0	0	0	0	0	0	0	832
Unknown	0	0	0	0	0	0	0	0	0	0	0	0
<b>Total</b>	<b>2 719</b>	<b>1 184</b>	<b>3 333</b>	<b>58</b>	<b>223</b>	<b>57</b>	<b>7</b>	<b>77</b>	<b>61</b>	<b>3 065</b>	<b>21</b>	<b>10 805</b>
<b>Average Age</b>	<b>88.3</b>	<b>73.5</b>	<b>65.2</b>	<b>44.5</b>	<b>42.4</b>	<b>43.2</b>	<b>42.6</b>	<b>46.6</b>	<b>54.9</b>	<b>54.3</b>	<b>74.2</b>	<b>67.9</b>

Note: Conflict has been determined using earliest accepted disability conflict. Please see Conflict Groupings note on first page.  
Source: DVA Ad hoc Information System.

**Table 12: Disability Pensioners by State, Age Group and Conflict - December 2011**

Tasmania												
	Second World War	Korea, Malaya & FESR	Vietnam	Gulf War	East Timor	Afghanistan	War in Iraq (2003)	Other Operations	Peace-keeping Forces	Serving Member	Not Stated	All Wars
Under 55	0	0	3	15	63	6	1	13	11	431	2	545
55 to 59	0	0	28	0	4	0	0	7	3	206	0	248
60 to 64	0	13	540	0	4	0	0	1	6	111	1	676
65 to 69	0	76	448	0	1	0	0	1	1	40	1	568
70 to 74	0	98	76	0	0	0	0	0	1	13	0	188
75 to 79	0	75	19	0	0	0	0	1	0	6	1	102
80 to 84	84	80	15	0	0	0	0	0	0	1	2	182
85 to 89	710	7	4	0	0	0	0	0	0	1	3	725
90 or over	351	1	0	0	0	0	0	0	0	0	0	352
Unknown	0	0	0	0	0	0	0	0	0	0	0	0
<b>Total</b>	<b>1 145</b>	<b>350</b>	<b>1 133</b>	<b>15</b>	<b>72</b>	<b>6</b>	<b>1</b>	<b>23</b>	<b>22</b>	<b>809</b>	<b>10</b>	<b>3 586</b>
<b>Average Age</b>	<b>88.3</b>	<b>74.2</b>	<b>64.9</b>	<b>45.0</b>	<b>43.8</b>	<b>38.3</b>	<b>50.0</b>	<b>51.3</b>	<b>53.2</b>	<b>53.6</b>	<b>72.8</b>	<b>70.1</b>

Northern Territory												
	Second World War	Korea, Malaya & FESR	Vietnam	Gulf War	East Timor	Afghanistan	War in Iraq (2003)	Other Operations	Peace-keeping Forces	Serving Member	Not Stated	All Wars
Under 55	0	0	0	6	47	3	1	8	7	253	1	326
55 to 59	0	0	7	1	4	0	0	0	3	84	0	99
60 to 64	0	2	111	0	0	0	0	1	1	56	0	171
65 to 69	0	15	58	0	0	0	0	1	1	15	0	90
70 to 74	0	11	14	0	0	0	0	0	1	7	0	33
75 to 79	0	6	4	0	0	0	0	0	0	2	0	12
80 to 84	4	6	2	0	0	0	0	0	0	1	0	13
85 to 89	20	3	0	0	0	0	0	0	0	2	0	25
90 or over	9	0	0	0	0	0	0	0	0	0	0	9
Unknown	0	0	0	0	0	0	0	0	0	0	0	0
<b>Total</b>	<b>33</b>	<b>43</b>	<b>196</b>	<b>7</b>	<b>51</b>	<b>3</b>	<b>1</b>	<b>10</b>	<b>13</b>	<b>420</b>	<b>1</b>	<b>778</b>
<b>Average Age</b>	<b>87.9</b>	<b>73.0</b>	<b>64.6</b>	<b>49.4</b>	<b>42.4</b>	<b>49.0</b>	<b>45.0</b>	<b>49.5</b>	<b>51.5</b>	<b>52.7</b>	<b>54.0</b>	<b>57.5</b>

Note: Conflict has been determined using earliest accepted disability conflict. Please see Conflict Groupings note on first page.

Source: DVA Ad hoc Information System.

**Table 12: Disability Pensioners by State, Age Group and Conflict - December 2011**

**Australian Capital Territory**

	Second World War	Korea, Malaya & FESR	Vietnam	Gulf War	East Timor	Afghanistan	War in Iraq (2003)	Other Operations	Peace-keeping Forces	Serving Member	Not Stated	All Wars
Under 55	0	0	2	22	89	15	5	26	23	656	6	844
55 to 59	0	0	15	4	6	1	2	6	7	260	0	301
60 to 64	0	7	224	0	4	0	0	2	6	203	0	446
65 to 69	0	49	266	1	1	0	0	0	4	99	0	420
70 to 74	0	71	115	0	0	0	0	0	2	54	1	243
75 to 79	0	79	63	0	0	0	0	0	1	38	1	182
80 to 84	35	58	20	0	0	0	0	0	1	15	2	131
85 to 89	313	10	2	0	0	0	0	0	0	6	1	332
90 or over	145	0	0	0	0	0	0	0	0	0	0	145
Unknown	0	0	0	0	0	0	0	0	0	0	0	0
<b>Total</b>	<b>493</b>	<b>274</b>	<b>707</b>	<b>27</b>	<b>100</b>	<b>16</b>	<b>7</b>	<b>34</b>	<b>44</b>	<b>1 331</b>	<b>11</b>	<b>3 044</b>
<b>Average Age</b>	<b>88.3</b>	<b>74.8</b>	<b>67.3</b>	<b>48.9</b>	<b>43.9</b>	<b>45.5</b>	<b>48.9</b>	<b>50.2</b>	<b>55.3</b>	<b>55.7</b>	<b>57.3</b>	<b>64.8</b>

**Overseas**

	Second World War	Korea, Malaya & FESR	Vietnam	Gulf War	East Timor	Afghanistan	War in Iraq (2003)	Other Operations	Peace-keeping Forces	Serving Member	Not Stated	All Wars
Under 55	0	0	2	7	23	2	0	7	6	139	1	187
55 to 59	0	0	5	1	2	0	0	5	2	53	0	68
60 to 64	0	0	133	0	1	0	0	0	2	31	0	167
65 to 69	0	15	91	0	0	0	0	0	1	13	0	120
70 to 74	0	16	32	0	0	0	0	0	1	5	0	54
75 to 79	0	15	8	0	0	0	0	0	0	2	0	25
80 to 84	11	15	2	0	0	0	0	0	0	0	0	28
85 to 89	68	4	0	0	0	0	0	0	0	2	1	75
90 or over	48	1	0	0	0	0	0	0	0	0	0	49
Unknown	0	0	0	0	0	0	0	0	0	0	0	0
<b>Total</b>	<b>127</b>	<b>66</b>	<b>273</b>	<b>8</b>	<b>26</b>	<b>2</b>	<b>0</b>	<b>12</b>	<b>12</b>	<b>245</b>	<b>2</b>	<b>773</b>
<b>Average Age</b>	<b>89.0</b>	<b>75.4</b>	<b>65.3</b>	<b>46.1</b>	<b>43.1</b>	<b>43.5</b>		<b>51.4</b>	<b>51.5</b>	<b>53.3</b>	<b>70.0</b>	<b>64.9</b>

Note: Conflict has been determined using earliest accepted disability conflict. Please see Conflict Groupings note on first page.

Source: DVA Ad hoc Information System.

**Table 13: War Widow Pensioners by Age Group and State - December 2011**

	<b>NSW</b>	<b>VIC</b>	<b>QLD</b>	<b>SA</b>	<b>WA</b>	<b>TAS</b>	<b>NT</b>	<b>ACT</b>	<b>O'seas</b>	<b>Total</b>
<b>Under 55</b>	188	112	211	48	54	16	3	17	28	677
<b>55 to 59</b>	290	132	291	75	100	29	5	24	11	957
<b>60 to 64</b>	597	354	627	168	169	71	20	44	14	2 064
<b>65 to 69</b>	791	444	756	180	186	90	14	51	22	2 534
<b>70 to 74</b>	1 252	672	1 022	230	327	150	19	70	22	3 764
<b>75 to 79</b>	2 747	1 543	1 763	457	551	296	13	141	35	7 546
<b>80 to 84</b>	8 409	5 801	4 954	1 772	1 625	777	27	287	44	23 696
<b>85 to 89</b>	12 332	8 611	6 593	2 933	2 270	1 008	28	395	67	34 237
<b>90 or over</b>	6 711	4 860	3 552	1 592	1 371	502	15	220	54	18 877
<b>Unknown</b>	0	0	0	0	0	0	0	0	0	0
<b>Total</b>	33 317	22 529	19 769	7 455	6 653	2 939	144	1 249	297	94 352
<b>Average Age</b>	84.2	84.7	82.7	84.4	83.5	83.2	76.5	82.1	77.3	83.9

Source: DVA Ad hoc Information System.

**Table 14: War Widow Pensioners by Conflict and State - December 2011**

	<b>NSW</b>	<b>VIC</b>	<b>QLD</b>	<b>SA</b>	<b>WA</b>	<b>TAS</b>	<b>NT</b>	<b>ACT</b>	<b>O'seas</b>	<b>Total</b>
<b>First World War</b>	71	60	50	16	16	11	1	0	3	228
<b>Second World War</b>	29 632	21 016	16 627	6 790	5 652	2 647	95	887	216	83 562
<b>Korea &amp; Malaya Forces</b>	1 211	468	755	161	277	109	12	68	24	3 085
<b>Far East Strategic Reserve</b>	183	84	131	25	58	18	5	9	3	516
<b>Vietnam</b>	935	680	992	319	286	113	25	86	30	3 466
<b>Defence/Peacekeeping Forces</b>	969	123	1 088	93	320	27	4	195	18	2 837
<b>Seaman's War Pension</b>	314	98	126	50	44	14	2	4	3	655
<b>New Guinea Civilians</b>	2	0	0	0	0	0	0	0	0	2
<b>Gulf War</b>	0	0	0	1	0	0	0	0	0	1
<b>All Wars and Conflicts</b>	33 317	22 529	19 769	7 455	6 653	2 939	144	1 249	297	94 352

Note: Conflict has been determined using File Prefix.  
Source: DVA Ad hoc Information System.

**Table 15: Widows Receiving Income Support Supplement by Rate and State - December 2011**

	<b>NSW</b>	<b>VIC</b>	<b>QLD</b>	<b>SA</b>	<b>WA</b>	<b>TAS</b>	<b>NT</b>	<b>ACT</b>	<b>O'seas</b>	<b>Total</b>
<b>Less than \$226.80</b>	2 578	1 918	1 820	591	571	252	15	105	16	7 866
<b>\$226.80</b>	22 925	15 008	13 691	5 320	4 354	2 142	63	410	37	63 950
<b>More than \$226.80</b>	117	9	25	0	6	1	0	3	1	162
<b>Total</b>	25 620	16 935	15 536	5 911	4 931	2 395	78	518	54	71 978
<b>Average Payment</b>	\$219.49	\$217.65	\$217.80	\$218.40	\$217.45	\$218.26	\$216.64	\$208.38	\$198.62	\$218.33

Source: DVA Ad hoc Information System.

**Table 16: Orphan Pensioners by Age Group and State - December 2011**

	<b>NSW</b>	<b>VIC</b>	<b>QLD</b>	<b>SA</b>	<b>WA</b>	<b>TAS</b>	<b>NT</b>	<b>ACT</b>	<b>O'seas</b>	<b>Total</b>
<b>Under 10</b>	13	4	7	4	2	0	0	2	3	35
<b>10 to 14</b>	24	20	39	6	4	1	0	6	6	106
<b>15 to 19</b>	8	6	10	3	3	0	0	0	1	31
<b>20 to 24</b>	0	0	0	0	0	0	0	0	0	0
<b>25 to 29</b>	0	0	0	0	0	0	0	0	0	0
<b>Total</b>	45	30	56	13	9	1	0	8	10	172
<b>Average Age</b>	11.3	12.7	12.3	11.7	12.3	14.0		11.6	10.9	12.0

Source: DVA Ad hoc Information System.

**Table 17: Orphan Pensioners by Conflict and State - December 2011**

	NSW	VIC	QLD	SA	WA	TAS	NT	ACT	O'seas	Total
<b>Second World War</b>	5	4	5	2	0	0	0	0	2	18
<b>Korea and Malaya Forces</b>	0	4	0	1	0	0	0	0	1	6
<b>Far East Strategic reserve</b>	0	0	0	0	0	0	0	0	0	0
<b>Vietnam</b>	13	9	16	0	2	1	0	3	3	47
<b>Defence/ Peacekeeping Forces</b>	27	12	35	8	7	0	0	5	4	98
<b>Seaman's War Pension</b>	0	0	0	0	0	0	0	0	0	0
<b>New Guinea Civilians</b>	0	0	0	0	0	0	0	0	0	0
<b>Gulf War</b>	0	1	0	2	0	0	0	0	0	3
<b>All Wars and Conflicts</b>	45	30	56	13	9	1	0	8	10	172

Note: Conflict has been determined using File Prefix.  
Source: DVA Ad hoc Information System.



**Table 18: Disability Pensioners on Service Pension by Rate and State - December 2011**

		NSW	VIC	QLD	SA	WA	TAS	NT	ACT	O'seas	Total
<b>General Rate</b>	<b>010</b>	445	342	391	164	175	40	3	33	5	1 598
	<b>015</b>	16	17	6	9	13	1	0	0	1	63
	<b>020</b>	484	338	462	175	187	66	10	39	1	1 762
	<b>025</b>	11	6	2	3	4	0	0	1	0	27
	<b>030</b>	611	497	558	229	247	85	5	43	5	2 280
	<b>035</b>	2	3	1	1	1	0	0	0	0	8
	<b>040</b>	825	576	748	248	251	124	10	35	5	2 822
	<b>045</b>	0	0	0	0	1	0	0	0	0	1
	<b>050</b>	699	516	563	190	198	106	6	44	4	2 326
	<b>055</b>	0	0	0	0	1	0	0	0	0	1
	<b>060</b>	722	509	577	188	175	79	7	35	4	2 296
	<b>065</b>	0	1	0	0	0	0	0	0	0	1
	<b>070</b>	594	353	437	138	118	69	4	19	2	1 734
	<b>075</b>	2	0	0	1	1	0	0	0	0	4
	<b>080</b>	782	484	549	152	186	93	8	22	3	2 279
	<b>085</b>	0	0	1	0	2	0	0	0	0	3
	<b>090</b>	762	417	719	158	243	112	14	25	9	2 459
	<b>095</b>	0	0	0	0	0	0	0	0	0	0
	<b>100</b>	2 524	1 522	1 798	523	638	277	21	90	18	7 411
	<b>EDA</b>	2 672	1 875	1 802	408	356	161	7	47	9	7 337
<b>Total</b>		11 151	7 456	8 614	2 587	2 797	1 213	95	433	66	34 412
<b>Intermediate</b>	<b>Intermediate</b>	120	54	79	26	20	7	3	4	1	314
	<b>Total</b>	120	54	79	26	20	7	3	4	1	314
<b>Special Rate</b>	<b>Blind</b>	132	70	82	14	26	14	1	2	1	342
	<b>TPI</b>	6 025	3 375	6 775	1 922	2 435	973	90	208	127	21 930
	<b>TTI</b>	1	1	1	1	0	0	0	0	0	4
	<b>Total</b>	6 158	3 446	6 858	1 937	2 461	987	91	210	128	22 276
<b>Grand Total</b>		17 429	10 956	15 551	4 550	5 278	2 207	189	647	195	57 002

Source: DVA Ad hoc Information System.

**Table 19: Disability Pensioners on Service Pension by Rate and Conflict - December 2011**

		Second World War	Korea, Malaya & FESR	Vietnam	Gulf War	East Timor	Afghanistan	War in Iraq (2003)	Other Operations	Peace-keeping Forces	Serving Member	Not Stated	All Wars
<b>General Rate</b>	<b>010</b>	876	254	387	2	0	0	0	0	1	77	1	1 598
	<b>015</b>	59	3	0	0	0	0	0	0	0	1	0	63
	<b>020</b>	939	366	381	0	2	0	0	0	0	74	0	1 762
	<b>025</b>	23	3	1	0	0	0	0	0	0	0	0	27
	<b>030</b>	1 250	486	472	0	2	0	0	1	0	67	2	2 280
	<b>035</b>	8	0	0	0	0	0	0	0	0	0	0	8
	<b>040</b>	1 582	626	547	0	6	0	0	0	0	60	1	2 822
	<b>045</b>	0	1	0	0	0	0	0	0	0	0	0	1
	<b>050</b>	1 391	443	437	1	0	0	0	1	0	53	0	2 326
	<b>055</b>	1	0	0	0	0	0	0	0	0	0	0	1
	<b>060</b>	1 237	436	571	1	6	0	0	1	0	43	1	2 296
	<b>065</b>	1	0	0	0	0	0	0	0	0	0	0	1
	<b>070</b>	1 037	307	363	0	2	0	0	0	0	24	1	1 734
	<b>075</b>	4	0	0	0	0	0	0	0	0	0	0	4
	<b>080</b>	1 385	382	475	1	5	0	0	5	0	25	1	2 279
	<b>085</b>	2	1	0	0	0	0	0	0	0	0	0	3
	<b>090</b>	1 361	438	628	4	5	0	0	1	1	21	0	2 459
	<b>095</b>	0	0	0	0	0	0	0	0	0	0	0	0
	<b>100</b>	4 212	1 408	1 666	3	8	0	0	10	0	46	58	7 411
	<b>EDA</b>	5 748	1 219	364	0	0	0	0	0	0	5	1	7 337
<b>Total</b>	21 116	6 373	6 292	12	36	0	0	19	2	496	66	34 412	
<b>Inter-mediate</b>	<b>Inter-mediate</b>	87	47	170	0	2	0	0	1	0	7	0	314
	<b>Total</b>	87	47	170	0	2	0	0	1	0	7	0	314
<b>Special Rate</b>	<b>Blind</b>	307	20	15	0	0	0	0	0	0	0	0	342
	<b>TPI</b>	1 319	1 962	17 929	44	198	10	2	173	44	237	12	21 930
	<b>TTI</b>	0	0	4	0	0	0	0	0	0	0	0	4
<b>Total</b>	1 626	1 982	17 948	44	198	10	2	173	44	237	12	22 276	
<b>Grand Total</b>		22 829	8 402	24 410	56	236	10	2	193	46	740	78	57 002

Note: Conflict has been determined using earliest accepted disability conflict. Please see Conflict Groupings note on first page.  
Source: DVA Ad hoc Information System.

**Table 20: Disability Pensioners on Service Pension by Conflict, Rate Group and State - December 2011**

	NSW	VIC	QLD	SA	WA	TAS	NT	ACT	O'seas	Total	
<b>Second World War</b>	<b>General Rate - 10-45%</b>	1 462	1 115	936	511	463	174	3	68	5	4 737
	<b>General Rate - 50-95%</b>	2 307	1 513	1 280	499	496	261	5	52	6	6 419
	<b>General Rate - 100%</b>	1 591	1 001	782	294	327	171	5	39	2	4 212
	<b>General Rate - EDA</b>	2 148	1 578	1 274	325	259	128	4	31	1	5 748
	<b>Intermediate</b>	45	20	12	5	2	2	0	1	0	87
	<b>Special Rate</b>	643	293	307	88	103	171	2	15	4	1 626
	<b>Total</b>	8 196	5 520	4 591	1 722	1 650	907	19	206	18	22 829
	<b>Korea, Malaya &amp; FESR</b>	<b>General Rate - 10-45%</b>	477	277	520	129	225	63	11	32	5
<b>General Rate - 50-95%</b>		584	276	679	111	210	100	8	34	5	2 007
<b>General Rate - 100%</b>		461	166	440	95	167	53	1	22	3	1 408
<b>General Rate - EDA</b>		429	223	379	59	79	29	2	14	5	1 219
<b>Intermediate</b>		20	5	12	6	3	1	0	0	0	47
<b>Special Rate</b>		550	213	684	139	289	61	9	26	11	1 982
<b>Total</b>		2 521	1 160	2 714	539	973	307	31	128	29	8 402

Note: Conflict has been determined using earliest accepted disability conflict. Please see Conflict Groupings note on first page.

Source: DVA Ad hoc Information System.

**Table 20: Disability Pensioners on Service Pension by Conflict, Rate Group and State - December 2011**

	NSW	VIC	QLD	SA	WA	TAS	NT	ACT	O'seas	Total
<b>Vietnam</b>										
General Rate - 10-45%	382	362	593	168	160	67	12	39	5	1 788
General Rate - 50-95%	614	471	809	204	197	94	22	52	11	2 474
General Rate - 100%	440	331	537	124	133	50	14	25	12	1 666
General Rate - EDA	94	73	146	24	17	4	1	2	3	364
Intermediate	51	28	52	14	14	4	3	3	1	170
Special Rate	4 783	2 845	5 576	1 676	1 996	731	74	163	104	17 948
<b>Total</b>	<b>6 364</b>	<b>4 110</b>	<b>7 713</b>	<b>2 210</b>	<b>2 517</b>	<b>950</b>	<b>126</b>	<b>284</b>	<b>136</b>	<b>24 410</b>
<b>Gulf War</b>										
General Rate - 10-45%	0	0	1	0	0	1	0	0	0	2
General Rate - 50-95%	3	1	2	0	0	0	0	1	0	7
General Rate - 100%	1	0	1	0	0	1	0	0	0	3
General Rate - EDA	0	0	0	0	0	0	0	0	0	0
Intermediate	0	0	0	0	0	0	0	0	0	0
Special Rate	18	6	11	1	5	0	0	0	3	44
<b>Total</b>	<b>22</b>	<b>7</b>	<b>15</b>	<b>1</b>	<b>5</b>	<b>2</b>	<b>0</b>	<b>1</b>	<b>3</b>	<b>56</b>

Note: Conflict has been determined using earliest accepted disability conflict. Please see Conflict Groupings note on first page.

Source: DVA Ad hoc Information System.

**Table 20: Disability Pensioners on Service Pension by Conflict, Rate Group and State - December 2011**

	NSW	VIC	QLD	SA	WA	TAS	NT	ACT	O'seas	Total
<b>East Timor</b>	<b>General Rate -</b>									
	<b>10-45%</b>	0	0	6	0	1	3	0	0	10
	<b>General Rate -</b>									
	<b>50-95%</b>	4	3	8	1	1	1	0	0	18
	<b>General Rate -</b>									
	<b>100%</b>	4	1	2	0	0	0	1	0	8
	<b>General Rate -</b>									
	<b>EDA</b>	0	0	0	0	0	0	0	0	0
	<b>Intermediate</b>	1	1	0	0	0	0	0	0	2
<b>Special Rate</b>	45	25	97	9	13	6	1	1	1	198
<b>Total</b>	54	30	113	10	15	10	2	1	1	236
<b>Afghanistan</b>	<b>General Rate -</b>									
	<b>10-45%</b>	0	0	0	0	0	0	0	0	0
	<b>General Rate -</b>									
	<b>50-95%</b>	0	0	0	0	0	0	0	0	0
	<b>General Rate -</b>									
	<b>100%</b>	0	0	0	0	0	0	0	0	0
	<b>General Rate -</b>									
	<b>EDA</b>	0	0	0	0	0	0	0	0	0
	<b>Intermediate</b>	0	0	0	0	0	0	0	0	0
<b>Special Rate</b>	3	1	1	0	5	0	0	0	0	10
<b>Total</b>	3	1	1	0	5	0	0	0	0	10

Note: Conflict has been determined using earliest accepted disability conflict. Please see Conflict Groupings note on first page.

Source: DVA Ad hoc Information System.

**Table 20: Disability Pensioners on Service Pension by Conflict, Rate Group and State - December 2011**

	NSW	VIC	QLD	SA	WA	TAS	NT	ACT	O'seas	Total
<b>War in Iraq (2003)</b>	<b>General Rate - 10-45%</b>	0	0	0	0	0	0	0	0	0
	<b>General Rate - 50-95%</b>	0	0	0	0	0	0	0	0	0
	<b>General Rate - 100%</b>	0	0	0	0	0	0	0	0	0
	<b>General Rate - EDA</b>	0	0	0	0	0	0	0	0	0
	<b>Intermediate</b>	0	0	0	0	0	0	0	0	0
	<b>Special Rate</b>	0	0	0	1	1	0	0	0	2
	<b>Total</b>	0	0	0	1	1	0	0	0	2
	<b>Other Operations</b>									
<b>General Rate - 10-45%</b>	0	0	1	0	0	0	0	0	0	1
<b>General Rate - 50-95%</b>	1	0	5	0	1	1	0	0	0	8
<b>General Rate - 100%</b>	3	0	4	1	1	1	0	0	0	10
<b>General Rate - EDA</b>	0	0	0	0	0	0	0	0	0	0
<b>Intermediate</b>	0	0	1	0	0	0	0	0	0	1
<b>Special Rate</b>	30	28	78	4	15	10	2	2	4	173
<b>Total</b>	34	28	89	5	17	12	2	2	4	193

Note: Conflict has been determined using earliest accepted disability conflict. Please see Conflict Groupings note on first page.

Source: DVA Ad hoc Information System.

**Table 20: Disability Pensioners on Service Pension by Conflict, Rate Group and State - December 2011**

	NSW	VIC	QLD	SA	WA	TAS	NT	ACT	O'seas	Total
<b>Peacekeeping Forces</b>	General Rate - 10-45%	1	0	0	0	0	0	0	0	1
	General Rate - 50-95%	0	0	1	0	0	0	0	0	1
	General Rate - 100%	0	0	0	0	0	0	0	0	0
	General Rate - EDA	0	0	0	0	0	0	0	0	0
	Intermediate	0	0	0	0	0	0	0	0	0
	Special Rate	9	9	18	2	4	2	0	0	44
	<b>Total</b>	10	9	19	2	4	2	0	0	46
	<b>Serving Member</b>	General Rate - 10-45%	70	24	110	21	30	8	2	12
General Rate - 50-95%		47	16	61	12	18	2	4	6	166
General Rate - 100%		10	5	15	3	8	0	0	4	46
General Rate - EDA		1	1	2	0	1	0	0	0	5
Intermediate Rate		3	0	2	1	1	0	0	0	7
Special Rate		73	23	84	16	29	5	3	3	237
<b>Total</b>		204	69	274	53	87	15	9	25	740

Note: Conflict has been determined using earliest accepted disability conflict. Please see Conflict Groupings note on first page.

Source: DVA Ad hoc Information System.

**Table 20: Disability Pensioners on Service Pension by Conflict, Rate Group and State - December 2011**

	NSW	VIC	QLD	SA	WA	TAS	NT	ACT	O'seas	Total	
<b>Not Stated</b>	<b>General Rate -</b>										
	<b>10-45%</b>	2	1	1	0	0	0	0	0	4	
	<b>General Rate -</b>										
	<b>50-95%</b>	1	0	1	0	1	0	0	0	3	
	<b>General Rate -</b>										
	<b>100%</b>	14	18	17	6	2	1	0	0	58	
	<b>General Rate -</b>										
	<b>EDA</b>	0	0	1	0	0	0	0	0	1	
<b>Intermediate</b>	0	0	0	0	0	0	0	0	0		
<b>Special Rate</b>	4	3	2	1	1	1	0	0	0	12	
<b>Total</b>	21	22	22	7	4	2	0	0	0	78	
<b>All Wars and Conflicts</b>	<b>General Rate -</b>										
	<b>10-45%</b>	2394	1779	2168	829	879	316	28	151	17	8561
	<b>General Rate -</b>										
	<b>50-95%</b>	3 561	2 280	2 846	827	924	459	39	145	22	11 103
	<b>General Rate -</b>										
	<b>100%</b>	2 524	1 522	1 798	523	638	277	21	90	18	7 411
	<b>General Rate -</b>										
	<b>EDA</b>	2 672	1 875	1 802	408	356	161	7	47	9	7 337
<b>Intermediate</b>	120	54	79	26	20	7	3	4	1	314	
<b>Special Rate</b>	6 158	3 446	6 858	1 937	2 461	987	91	210	128	22 276	
<b>Total</b>	17 429	10 956	15 551	4 550	5 278	2 207	189	647	195	57 002	

Note: Conflict has been determined using earliest accepted disability conflict. Please see Conflict Groupings note on first page.

Source: DVA Ad hoc Information System.



**Table 21: Disability Pensioners on Service Pension by State, Age Group and Conflict - December 2011**

<b>Total</b>												
	<b>Second World War</b>	<b>Korea, Malaya &amp; FESR</b>	<b>Vietnam</b>	<b>Gulf War</b>	<b>East Timor</b>	<b>Afghanistan</b>	<b>War in Iraq (2003)</b>	<b>Other Operations</b>	<b>Peace-keeping Forces</b>	<b>Serving Member</b>	<b>Not Stated</b>	<b>All Wars</b>
<b>Under 55</b>	0	0	3	41	195	9	2	144	35	45	0	474
<b>55 to 59</b>	0	0	300	8	16	1	0	34	5	51	0	415
<b>60 to 64</b>	0	201	10 929	5	17	0	0	10	3	170	6	11 341
<b>65 to 69</b>	0	1 624	9 906	1	7	0	0	4	2	181	1	11 726
<b>70 to 74</b>	0	2 282	2 125	1	1	0	0	0	1	150	0	4 560
<b>75 to 79</b>	0	2 263	763	0	0	0	0	1	0	79	7	3 113
<b>80 to 84</b>	702	1 817	332	0	0	0	0	0	0	41	15	2 907
<b>85 to 89</b>	14 281	200	48	0	0	0	0	0	0	19	36	14 584
<b>90 or over</b>	7 846	15	4	0	0	0	0	0	0	4	13	7 882
<b>Total</b>	22 829	8 402	24 410	56	236	10	2	193	46	740	78	57 002
<b>Average Age</b>	88.8	74.6	65.6	49.6	45.0	43.3	50.0	48.6	48.6	67.6	83.9	76.1

<b>New South Wales</b>												
	<b>Second World War</b>	<b>Korea, Malaya &amp; FESR</b>	<b>Vietnam</b>	<b>Gulf War</b>	<b>East Timor</b>	<b>Afghanistan</b>	<b>War in Iraq (2003)</b>	<b>Other Operations</b>	<b>Peace-keeping Forces</b>	<b>Serving Member</b>	<b>Not Stated</b>	<b>All Wars</b>
<b>Under 55</b>	0	0	1	15	50	3	0	22	7	12	0	110
<b>55 to 59</b>	0	0	84	3	1	0	0	7	2	15	0	112
<b>60 to 64</b>	0	76	2 798	3	1	0	0	4	0	53	0	2 935
<b>65 to 69</b>	0	365	2 644	0	1	0	0	1	0	42	0	3 053
<b>70 to 74</b>	0	603	516	1	1	0	0	0	1	41	0	1 163
<b>75 to 79</b>	0	724	197	0	0	0	0	0	0	22	3	946
<b>80 to 84</b>	300	661	105	0	0	0	0	0	0	12	6	1 084
<b>85 to 89</b>	5 113	85	17	0	0	0	0	0	0	6	10	5 231
<b>90 or over</b>	2 783	7	2	0	0	0	0	0	0	1	2	2 795
<b>Total</b>	8 196	2 521	6 364	22	54	3	0	34	10	204	21	17 429
<b>Average Age</b>	88.7	75.6	65.6	51.4	43.8	42.0		51.0	50.2	67.4	84.8	77.8

Note: Conflict has been determined using earliest accepted disability conflict. Please see Conflict Groupings note on first page.  
Source: DVA Ad hoc Information System.

**Table 21: Disability Pensioners on Service Pension by State, Age Group and Conflict - December 2011**

<b>Victoria</b>												
	<b>Second World War</b>	<b>Korea, Malaya &amp; FESR</b>	<b>Vietnam</b>	<b>Gulf War</b>	<b>East Timor</b>	<b>Afghanistan</b>	<b>War in Iraq (2003)</b>	<b>Other Operations</b>	<b>Peace-keeping Forces</b>	<b>Serving Member</b>	<b>Not Stated</b>	<b>All Wars</b>
<b>Under 55</b>	0	0	0	6	27	1	0	24	8	4	0	70
<b>55 to 59</b>	0	0	27	1	1	0	0	3	0	2	0	34
<b>60 to 64</b>	0	21	1 882	0	2	0	0	1	1	14	4	1 925
<b>65 to 69</b>	0	200	1 756	0	0	0	0	0	0	20	0	1 976
<b>70 to 74</b>	0	293	290	0	0	0	0	0	0	14	0	597
<b>75 to 79</b>	0	321	92	0	0	0	0	0	0	8	1	422
<b>80 to 84</b>	114	296	59	0	0	0	0	0	0	3	2	474
<b>85 to 89</b>	3 470	28	4	0	0	0	0	0	0	4	11	3 517
<b>90 or over</b>	1 936	1	0	0	0	0	0	0	0	0	4	1 941
<b>Total</b>	5 520	1 160	4 110	7	30	1	0	28	9	69	22	10 956
<b>Average Age</b>	88.9	75.2	65.4	46.3	41.5	32.0		46.1	45.4	68.8	83.0	78.2

<b>Queensland</b>												
	<b>Second World War</b>	<b>Korea, Malaya &amp; FESR</b>	<b>Vietnam</b>	<b>Gulf War</b>	<b>East Timor</b>	<b>Afghanistan</b>	<b>War in Iraq (2003)</b>	<b>Other Operations</b>	<b>Peace-keeping Forces</b>	<b>Serving Member</b>	<b>Not Stated</b>	<b>All Wars</b>
<b>Under 55</b>	0	0	1	10	93	1	0	66	15	15	0	201
<b>55 to 59</b>	0	0	109	3	7	0	0	18	1	23	0	161
<b>60 to 64</b>	0	45	3 250	2	9	0	0	5	2	62	1	3 376
<b>65 to 69</b>	0	551	3 098	0	4	0	0	0	1	71	1	3 726
<b>70 to 74</b>	0	812	830	0	0	0	0	0	0	60	0	1 702
<b>75 to 79</b>	0	762	304	0	0	0	0	0	0	28	1	1 095
<b>80 to 84</b>	123	487	102	0	0	0	0	0	0	8	5	725
<b>85 to 89</b>	2 802	53	17	0	0	0	0	0	0	5	9	2 886
<b>90 or over</b>	1 666	4	2	0	0	0	0	0	0	2	5	1 679
<b>Total</b>	4 591	2 714	7 713	15	113	1	0	89	19	274	22	15 551
<b>Average Age</b>	88.9	74.3	65.9	49.7	45.7	41.0		48.6	47.9	67.2	84.2	73.9

Note: Conflict has been determined using earliest accepted disability conflict. Please see Conflict Groupings note on first page.  
 Source: DVA Ad hoc Information System.

**Table 21: Disability Pensioners on Service Pension by State, Age Group and Conflict - December 2011**

**South Australia**

	Second World War	Korea, Malaya & FESR	Vietnam	Gulf War	East Timor	Afghan-istan	War in Iraq (2003)	Other Operations	Peace-keeping Forces	Serving Member	Not Stated	All Wars
<b>Under 55</b>	0	0	1	1	6	0	1	4	2	4	0	19
<b>55 to 59</b>	0	0	31	0	3	0	0	1	0	3	0	38
<b>60 to 64</b>	0	24	1 118	0	1	0	0	0	0	15	0	1 158
<b>65 to 69</b>	0	164	864	0	0	0	0	0	0	14	0	1 042
<b>70 to 74</b>	0	146	135	0	0	0	0	0	0	9	0	290
<b>75 to 79</b>	0	109	43	0	0	0	0	0	0	1	1	154
<b>80 to 84</b>	43	85	14	0	0	0	0	0	0	5	0	147
<b>85 to 89</b>	1 120	11	4	0	0	0	0	0	0	1	4	1 140
<b>90 or over</b>	559	0	0	0	0	0	0	0	0	1	2	562
<b>Total</b>	1 722	539	2 210	1	10	0	1	5	2	53	7	4 550
<b>Average Age</b>	88.7	73.0	64.9	46.0	48.5		46.0	47.4	49.0	66.9	87.7	74.9

**Western Australia**

	Second World War	Korea, Malaya & FESR	Vietnam	Gulf War	East Timor	Afghan-istan	War in Iraq (2003)	Other Operations	Peace-keeping Forces	Serving Member	Not Stated	All Wars
<b>Under 55</b>	0	0	0	5	11	4	1	14	2	7	0	44
<b>55 to 59</b>	0	0	25	0	2	1	0	2	1	3	0	34
<b>60 to 64</b>	0	20	1 198	0	1	0	0	0	0	15	0	1 234
<b>65 to 69</b>	0	240	967	0	1	0	0	1	1	22	0	1 232
<b>70 to 74</b>	0	291	215	0	0	0	0	0	0	19	0	525
<b>75 to 79</b>	0	232	81	0	0	0	0	0	0	12	1	326
<b>80 to 84</b>	66	176	28	0	0	0	0	0	0	9	2	281
<b>85 to 89</b>	1 048	13	3	0	0	0	0	0	0	0	1	1 065
<b>90 or over</b>	536	1	0	0	0	0	0	0	0	0	0	537
<b>Total</b>	1 650	973	2 517	5	15	5	1	17	4	87	4	5 278
<b>Average Age</b>	88.6	73.7	65.5	47.0	44.8	46.8	54.0	47.4	53.5	68.3	80.8	74.1

Note: Conflict has been determined using earliest accepted disability conflict. Please see Conflict Groupings note on first page.  
Source: DVA Ad hoc Information System.

**Table 21: Disability Pensioners on Service Pension by State, Age Group and Conflict - December 2011**

<b>Tasmania</b>													
	Second World War	Korea, Malaya & FESR	Vietnam	Gulf War	East Timor	Afghan-istan	War in Iraq (2003)	Other Operations	Peace-keeping Forces	Serving Member	Not Stated	All Wars	
Under 55	0	0	0	2	5	0	0	8	1	1	0	17	
55 to 59	0	0	18	0	1	0	0	2	1	2	0	24	
60 to 64	0	13	444	0	3	0	0	0	0	3	1	464	
65 to 69	0	60	392	0	1	0	0	1	0	5	0	459	
70 to 74	0	88	64	0	0	0	0	0	0	1	0	153	
75 to 79	0	68	17	0	0	0	0	1	0	2	0	88	
80 to 84	42	73	12	0	0	0	0	0	0	0	0	127	
85 to 89	577	4	3	0	0	0	0	0	0	1	1	586	
90 or over	288	1	0	0	0	0	0	0	0	0	0	289	
<b>Total</b>	<b>907</b>	<b>307</b>	<b>950</b>	<b>2</b>	<b>10</b>	<b>0</b>	<b>0</b>	<b>12</b>	<b>2</b>	<b>15</b>	<b>2</b>	<b>2 207</b>	
<b>Average Age</b>	<b>88.5</b>	<b>74.3</b>	<b>65.1</b>	<b>42.5</b>	<b>53.1</b>			<b>50.6</b>	<b>51.0</b>	<b>66.7</b>	<b>73.5</b>	<b>75.8</b>	
<b>Northern Territory</b>													
	Second World War	Korea, Malaya & FESR	Vietnam	Gulf War	East Timor	Afghan-istan	War in Iraq (2003)	Other Operations	Peace-keeping Forces	Serving Member	Not Stated	All Wars	
Under 55	0	0	0	0	1	0	0	1	0	2	0	4	
55 to 59	0	0	2	0	1	0	0	0	0	1	0	4	
60 to 64	0	1	66	0	0	0	0	0	0	3	0	70	
65 to 69	0	13	40	0	0	0	0	1	0	0	0	54	
70 to 74	0	7	12	0	0	0	0	0	0	1	0	20	
75 to 79	0	4	4	0	0	0	0	0	0	0	0	8	
80 to 84	0	5	2	0	0	0	0	0	0	0	0	7	
85 to 89	11	1	0	0	0	0	0	0	0	2	0	14	
90 or over	8	0	0	0	0	0	0	0	0	0	0	8	
<b>Total</b>	<b>19</b>	<b>31</b>	<b>126</b>	<b>0</b>	<b>2</b>	<b>0</b>	<b>0</b>	<b>2</b>	<b>0</b>	<b>9</b>	<b>0</b>	<b>189</b>	
<b>Average Age</b>	<b>89.1</b>	<b>72.2</b>	<b>65.2</b>		<b>45.5</b>			<b>54.0</b>		<b>63.9</b>		<b>68.4</b>	

Note: Conflict has been determined using earliest accepted disability conflict. Please see Conflict Groupings note on first page.  
Source: DVA Ad hoc Information System.

**Table 21: Disability Pensioners on Service Pension by State, Age Group and Conflict - December 2011**

**Australian Capital Territory**

	Second World War	Korea, Malaya & FESR	Vietnam	Gulf War	East Timor	Afghan-istan	War in Iraq (2003)	Other Operations	Peace-keeping Forces	Serving Member	Not Stated	All Wars
Under 55	0	0	0	0	1	0	0	1	0	0	0	2
55 to 59	0	0	1	0	0	0	0	1	0	1	0	3
60 to 64	0	1	100	0	0	0	0	0	0	3	0	104
65 to 69	0	22	105	1	0	0	0	0	0	7	0	135
70 to 74	0	34	47	0	0	0	0	0	0	5	0	86
75 to 79	0	35	21	0	0	0	0	0	0	5	0	61
80 to 84	11	31	10	0	0	0	0	0	0	4	0	56
85 to 89	132	5	0	0	0	0	0	0	0	0	0	137
90 or over	63	0	0	0	0	0	0	0	0	0	0	63
<b>Total</b>	206	128	284	1	1	0	0	2	0	25	0	647
<b>Average Age</b>	88.5	75.2	67.3	66.0	37.0			51.0		71.7		75.7

**Overseas**

	Second World War	Korea, Malaya & FESR	Vietnam	Gulf War	East Timor	Afghan-istan	War in Iraq (2003)	Other Operations	Peace-keeping Forces	Serving Member	Not Stated	All Wars
Under 55	0	0	0	2	1	0	0	4	0	0	0	7
55 to 59	0	0	3	1	0	0	0	0	0	1	0	5
60 to 64	0	0	73	0	0	0	0	0	0	2	0	75
65 to 69	0	9	40	0	0	0	0	0	0	0	0	49
70 to 74	0	8	16	0	0	0	0	0	0	0	0	24
75 to 79	0	8	4	0	0	0	0	0	0	1	0	13
80 to 84	3	3	0	0	0	0	0	0	0	0	0	6
85 to 89	8	0	0	0	0	0	0	0	0	0	0	8
90 or over	7	1	0	0	0	0	0	0	0	0	0	8
<b>Total</b>	18	29	136	3	1	0	0	4	0	4	0	195
<b>Average Age</b>	88.9	73.8	65.1	48.0	35.0			45.3		64.3		67.7

Note: Conflict has been determined using earliest accepted disability conflict. Please see Conflict Groupings note on first page.  
Source: DVA Ad hoc Information System.

**Table 22: Specific Disability Allowances by Item Number and State - December 2011**

	NSW	VIC	QLD	SA	WA	TAS	NT	ACT	O'seas	Total
<b>001</b> Two arms amputated	0	1	1	1	1	0	0	0	0	4
<b>002</b> Two legs and one arm amputated	0	1	0	0	0	0	0	0	0	1
<b>003</b> Two legs amputated above the knee	4	3	6	2	4	0	0	1	0	20
<b>004</b> Two legs amputated and blinded in one eye	0	0	0	0	0	0	0	0	0	0
<b>005</b> One arm and one leg amputated and blinded in one eye	0	0	0	0	0	0	0	0	0	0
<b>006</b> One leg and one arm amputated	2	0	1	0	1	0	0	0	0	4
<b>007</b> One leg amputated above, and one leg amputated below, the knee	0	0	1	0	0	0	0	0	0	1
<b>008</b> Two legs amputated below the knee	4	3	4	2	1	0	0	1	0	15
<b>009</b> One arm amputated and blinded in one eye	0	0	0	0	0	0	0	0	0	0
<b>010</b> One leg amputated and blinded in one eye	1	0	0	0	0	0	0	0	0	1
<b>011</b> One leg amputated above the knee	13	7	5	5	10	1	0	0	0	41
<b>012</b> One leg amputated below the knee	23	13	17	5	8	2	0	2	0	70
<b>013</b> One arm amputated above the elbow	3	4	2	2	1	1	0	0	0	13
<b>014</b> One arm amputated below the elbow	1	1	1	1	2	0	0	0	0	6
<b>015</b> Blinded in one eye	308	157	133	33	42	14	1	6	4	698
<b>Total</b>	359	190	171	51	70	18	1	10	4	874

Source: DVA Ad hoc Information System.

**Table 23: Social Security Age Pensioners by Age Group and State - December 2011**

	<b>NSW</b>	<b>VIC</b>	<b>QLD</b>	<b>SA</b>	<b>WA</b>	<b>TAS</b>	<b>NT</b>	<b>ACT</b>	<b>O'seas</b>	<b>Total</b>
<b>Under 55</b>	2	0	0	0	0	0	0	0	0	2
<b>55 to 59</b>	2	0	0	1	0	0	0	0	0	3
<b>60 to 64</b>	4	1	3	0	2	2	0	0	0	12
<b>65 to 69</b>	70	36	118	23	41	4	3	4	0	299
<b>70 to 74</b>	65	45	109	19	45	13	1	5	2	304
<b>75 to 79</b>	103	62	101	31	32	15	0	6	0	350
<b>80 to 84</b>	437	266	220	93	107	36	4	16	2	1 181
<b>85 to 89</b>	662	472	371	169	140	20	0	5	0	1 839
<b>90 or over</b>	199	171	119	60	41	8	0	2	0	600
<b>Unknown</b>	0	0	0	0	0	0	0	0	0	0
<b>Total</b>	1 544	1 053	1 041	396	408	98	8	38	4	4 590
<b>Average Age</b>	83.9	84.6	81.6	83.7	81.7	80.7	75.4	79.5	77.8	83.0

Source: DVA Ad hoc Information System.

**Table 24: Disability Pensioners Also Receiving Social Security Age Pension by  
Disability Pension Rate and State - December 2011**

		NSW	VIC	QLD	SA	WA	TAS	NT	ACT	O'seas	Total
<b>General Rate</b>	<b>010</b>	33	22	23	11	9	3	0	1	0	102
	<b>015</b>	3	2	0	1	2	0	1	0	0	9
	<b>020</b>	26	22	25	16	13	5	0	1	0	108
	<b>025</b>	1	0	0	0	1	0	0	0	0	2
	<b>030</b>	31	34	36	22	19	1	0	3	0	146
	<b>035</b>	0	0	0	0	0	0	0	0	0	0
	<b>040</b>	49	40	37	19	17	3	0	5	0	170
	<b>045</b>	1	1	0	0	0	0	0	0	0	2
	<b>050</b>	31	18	24	10	14	2	0	1	0	100
	<b>055</b>	0	0	0	0	0	0	0	0	0	0
	<b>060</b>	56	25	37	9	8	5	0	1	0	141
	<b>065</b>	0	0	0	0	0	0	0	0	0	0
	<b>070</b>	35	30	26	5	6	5	0	1	0	108
	<b>075</b>	0	0	0	0	1	0	0	0	0	1
	<b>080</b>	34	29	35	11	6	1	0	2	0	118
	<b>085</b>	0	0	0	0	0	0	0	0	0	0
	<b>090</b>	26	16	30	6	12	0	1	0	1	92
	<b>095</b>	0	0	0	0	0	0	0	0	0	0
	<b>100</b>	287	159	175	55	67	16	1	5	0	765
	<b>EDA</b>	209	168	130	40	13	8	0	3	0	571
<b>Total</b>		822	566	578	205	188	49	3	23	1	2 435
<b>Intermediate</b>	<b>Intermediate</b>	1	1	2	2	0	0	0	0	1	7
	<b>Total</b>	1	1	2	2	0	0	0	0	1	7
<b>Special Rate</b>	<b>Blind</b>	11	7	10	1	2	0	0	0	0	31
	<b>TPI</b>	57	32	50	14	24	7	0	1	1	186
	<b>TTI</b>	0	0	0	0	0	0	0	0	0	0
	<b>Total</b>	68	39	60	15	26	7	0	1	1	217
<b>Grand Total</b>		891	606	640	222	214	56	3	24	3	2 659

Source: DVA Ad hoc Information System.



**Table 25: Disability Pensioners also Receiving Social Security Age Pension by Conflict,  
Disability Pension Rate Group and Age Group - December 2011**

		65 to 69	70 to 74	75 to 79	80 to 84	85 to 89	90 or Over	Total
<b>Second World War</b>	<b>General Rate - 10-45%</b>	0	0	0	64	275	98	437
	<b>General Rate - 50-95%</b>	0	0	0	72	262	100	434
	<b>General Rate - 100%</b>	0	0	0	141	396	116	653
	<b>General Rate - EDA</b>	0	0	0	157	297	80	534
	<b>Intermediate Rate</b>	0	0	0	1	2	1	4
	<b>Special Rate</b>	0	0	0	37	80	20	137
	<b>Total</b>	0	0	0	472	1312	415	2199
	-----							
<b>Korea, Malaya &amp; FESR</b>	<b>General Rate - 10-45%</b>	5	5	9	6	0	0	25
	<b>General Rate - 50-95%</b>	5	9	6	5	1	0	26
	<b>General Rate - 100%</b>	2	12	9	7	0	0	30
	<b>General Rate - EDA</b>	1	4	4	4	0	0	13
	<b>Intermediate Rate</b>	0	0	0	0	0	0	0
	<b>Special Rate</b>	4	7	2	3	0	0	16
	<b>Total</b>	17	37	30	25	1	0	110
	-----							

Note: Conflict has been determined using earliest accepted disability conflict. Please see Conflict Groupings note on first page.  
Source: DVA Ad hoc Information System.

**Table 25: Disability Pensioners also Receiving Social Security Age Pension by Conflict,  
Disability Pension Rate Group and Age Group - December 2011**

		65 to 69	70 to 74	75 to 79	80 to 84	85 to 89	90 or Over	Total
<b>Vietnam</b>	<b>General Rate -</b>							
	<b>10-45%</b>	1	2	1	1	0	0	5
	<b>General Rate -</b>							
	<b>50-95%</b>	0	4	2	0	0	0	6
	<b>General Rate -</b>							
	<b>100%</b>	1	3	0	1	0	0	5
	<b>General Rate -</b>							
	<b>EDA</b>	0	2	1	0	0	0	3
	<b>Intermediate Rate</b>	0	0	0	0	0	0	0
<b>Special Rate</b>	1	1	0	0	0	0	2	
<b>Total</b>	3	12	4	2	0	0	21	
<b>Gulf War</b>	<b>General Rate -</b>							
	<b>10-45%</b>	0	0	0	0	0	0	0
	<b>General Rate -</b>							
	<b>50-95%</b>	0	0	0	0	0	0	0
	<b>General Rate -</b>							
	<b>100%</b>	0	0	0	0	0	0	0
	<b>General Rate -</b>							
	<b>EDA</b>	0	0	0	0	0	0	0
	<b>Intermediate Rate</b>	0	0	0	0	0	0	0
<b>Special Rate</b>	0	0	0	0	0	0	0	
<b>Total</b>	0	0	0	0	0	0	0	

Note: Conflict has been determined using earliest accepted disability conflict. Please see Conflict Groupings note on first page.  
Source: DVA Ad hoc Information System.

**Table 25: Disability Pensioners also Receiving Social Security Age Pension by Conflict,  
Disability Pension Rate Group and Age Group - December 2011**

		65 to 69	70 to 74	75 to 79	80 to 84	85 to 89	90 or Over	Total
<b>East Timor</b>	<b>General Rate -</b>							
	<b>10-45%</b>	0	0	0	0	0	0	0
	<b>General Rate -</b>							
	<b>50-95%</b>	0	0	0	0	0	0	0
	<b>General Rate -</b>							
	<b>100%</b>	0	0	0	0	0	0	0
	<b>General Rate -</b>							
	<b>EDA</b>	0	0	0	0	0	0	0
	<b>Intermediate Rate</b>	0	0	0	0	0	0	0
<b>Special Rate</b>	0	0	0	0	0	0	0	
<b>Total</b>	0	0	0	0	0	0	0	
<b>Afghanistan</b>	<b>General Rate -</b>							
	<b>10-45%</b>	0	0	0	0	0	0	0
	<b>General Rate -</b>							
	<b>50-95%</b>	0	0	0	0	0	0	0
	<b>General Rate -</b>							
	<b>100%</b>	0	0	0	0	0	0	0
	<b>General Rate -</b>							
	<b>EDA</b>	0	0	0	0	0	0	0
	<b>Intermediate Rate</b>	0	0	0	0	0	0	0
<b>Special Rate</b>	0	0	0	0	0	0	0	
<b>Total</b>	0	0	0	0	0	0	0	

Note: Conflict has been determined using earliest accepted disability conflict. Please see Conflict Groupings note on first page.  
Source: DVA Ad hoc Information System.

**Table 25: Disability Pensioners also Receiving Social Security Age Pension by Conflict,  
Disability Pension Rate Group and Age Group - December 2011**

	65 to 69	70 to 74	75 to 79	80 to 84	85 to 89	90 or Over	Total
<b>War in Iraq (2003)</b>							
General Rate -							
10-45%	0	0	0	0	0	0	0
General Rate -							
50-95%	0	0	0	0	0	0	0
General Rate -							
100%	0	0	0	0	0	0	0
General Rate -							
EDA	0	0	0	0	0	0	0
Intermediate Rate	0	0	0	0	0	0	0
Special Rate	0	0	0	0	0	0	0
<b>Total</b>	<b>0</b>	<b>0</b>	<b>0</b>	<b>0</b>	<b>0</b>	<b>0</b>	<b>0</b>
-----							
<b>Other Operations</b>							
General Rate -							
10-45%	0	0	0	0	0	0	0
General Rate -							
50-95%	0	0	0	0	0	0	0
General Rate -							
100%	0	0	0	0	0	0	0
General Rate -							
EDA	0	0	0	0	0	0	0
Intermediate Rate	0	0	0	0	0	0	0
Special Rate	0	0	0	0	0	0	0
<b>Total</b>	<b>0</b>	<b>0</b>	<b>0</b>	<b>0</b>	<b>0</b>	<b>0</b>	<b>0</b>
-----							

Note: Conflict has been determined using earliest accepted disability conflict. Please see Conflict Groupings note on first page.  
Source: DVA Ad hoc Information System.

**Table 25: Disability Pensioners also Receiving Social Security Age Pension by Conflict,  
Disability Pension Rate Group and Age Group - December 2011**

		65 to 69	70 to 74	75 to 79	80 to 84	85 to 89	90 or Over	Total	
<b>Peacekeeping Forces</b>	<b>General Rate - 10-45%</b>	0	0	1	0	0	0	1	
	<b>General Rate - 50-95%</b>	0	3	0	0	0	0	3	
	<b>General Rate - 100%</b>	0	2	0	0	0	0	2	
	<b>General Rate - EDA</b>	0	2	2	0	0	0	4	
	<b>Intermediate Rate</b>	0	0	0	0	0	0	0	
	<b>Special Rate</b>	1	1	0	0	0	0	2	
	<b>Total</b>	1	8	3	0	0	0	12	
	<b>Serving Member</b>	<b>General Rate - 10-45%</b>	31	18	12	7	1	0	69
		<b>General Rate - 50-95%</b>	39	25	16	8	1	0	89
<b>General Rate - 100%</b>		31	22	9	3	1	0	66	
<b>General Rate - EDA</b>		4	3	6	0	0	0	13	
<b>Intermediate Rate</b>		2	1	0	0	0	0	3	
<b>Special Rate</b>		36	17	7	0	0	0	60	
<b>Total</b>		143	86	50	18	3	0	300	

Note: Conflict has been determined using earliest accepted disability conflict. Please see Conflict Groupings note on first page.  
Source: DVA Ad hoc Information System.

**Table 25: Disability Pensioners also Receiving Social Security Age Pension by Conflict,  
Disability Pension Rate Group and Age Group - December 2011**

		65 to 69	70 to 74	75 to 79	80 to 84	85 to 89	90 or Over	Total
<b>Not Stated</b>	<b>General Rate -</b>							
	<b>10-45%</b>	0	0	1	1	0	0	2
	<b>General Rate -</b>							
	<b>50-95%</b>	0	1	1	0	0	0	2
	<b>General Rate -</b>							
	<b>100%</b>	0	1	2	4	2	0	9
	<b>General Rate -</b>							
	<b>EDA</b>	0	0	0	4	0	0	4
	<b>Intermediate Rate</b>	0	0	0	0	0	0	0
<b>Special Rate</b>	0	0	0	0	0	0	0	
<b>Total</b>	0	2	4	9	2	0	17	
<b>All Wars and Conflicts</b>	<b>General Rate -</b>							
	<b>10-45%</b>	37	25	24	79	276	98	539
	<b>General Rate -</b>							
	<b>50-95%</b>	44	42	25	85	264	100	560
	<b>General Rate -</b>							
	<b>100%</b>	34	40	20	156	399	116	765
	<b>General Rate -</b>							
	<b>EDA</b>	5	11	13	165	297	80	571
	<b>Intermediate Rate</b>	2	1	0	1	2	1	7
<b>Special Rate</b>	42	26	9	40	80	20	217	
<b>Total</b>	164	145	91	526	1318	415	2659	

Note: Conflict has been determined using earliest accepted disability conflict. Please see Conflict Groupings note on first page.  
Source: DVA Ad hoc Information System.

**Table 26: Defence Force Income Support Allowance by Type and State - December 2011**

		<b>NSW</b>	<b>VIC</b>	<b>QLD</b>	<b>SA</b>	<b>WA</b>	<b>TAS</b>	<b>NT</b>	<b>ACT</b>	<b>O'seas</b>	<b>Total</b>
<b>DFISA Centrelink</b>	<b>Persons</b>	4 134	2 779	3 899	841	1 159	341	37	212	25	13 427
<b>Pension</b>	<b>Ave' Payment</b>	\$94.39	\$87.43	\$102.64	\$98.43	\$106.16	\$115.26	\$88.17	\$57.28	\$60.40	\$96.48
<b>DFISA Centrelink</b>	<b>Persons</b>	69	51	108	29	33	15	2	3	0	310
<b>Benefit</b>	<b>Ave' Payment</b>	\$82.95	\$98.46	\$104.51	\$65.26	\$111.86	\$98.55	\$103.83	\$15.91		\$94.68
<b>DFISA DVA</b>	<b>Persons</b>	1 248	837	869	302	292	82	5	38	4	3 677
	<b>Ave' Payment</b>	\$113.21	\$111.27	\$110.57	\$103.23	\$99.83	\$126.23	\$91.64	\$81.41	\$239.93	\$110.33
<b>Total</b>	<b>Persons</b>	5 451	3 667	4 876	1 172	1 484	438	44	253	29	17 414
	<b>Ave' Payment</b>	\$98.55	\$93.02	\$104.09	\$98.84	\$105.04	\$116.74	\$89.27	\$60.41	\$85.16	\$99.37

Source: DVA Ad hoc Information System.

**Table 27: Defence Force Income Support Allowance by Type and Age Group - December 2011**

	<b>Under 55</b>	<b>55 to 59</b>	<b>60 to 64</b>	<b>65 to 69</b>	<b>70 to 74</b>	<b>75 to 79</b>	<b>80 to 84</b>	<b>85 to 89</b>	<b>90 or over</b>	<b>Unknown</b>	<b>Total</b>
<b>DFISA Centrelink Pension</b>	1 355	1 159	1 303	1 513	1 107	828	1 934	3 203	1 025	0	13 427
<b>DFISA Centrelink Benefit</b>	152	68	88	0	0	0	0	1	1	0	310
<b>DFISA DVA</b>	2	2	13	273	273	268	952	1 469	425	0	3 677
<b>Total</b>	1 509	1 229	1 404	1 786	1 380	1 096	2 886	4 673	1 451	0	17 414

Source: DVA Ad hoc Information System.



**Table 28: Defence Force Income Support allowance also Receiving Disability Pension by Conflict and State - December 2011**

	<b>NSW</b>	<b>VIC</b>	<b>QLD</b>	<b>SA</b>	<b>WA</b>	<b>TAS</b>	<b>NT</b>	<b>ACT</b>	<b>O'seas</b>	<b>Total</b>
<b>Second World War</b>	2 215	1 655	1 173	426	406	83	8	50	6	6 022
<b>Korea, Malaya &amp; FESR</b>	126	77	135	14	60	16	1	10	4	443
<b>Vietnam</b>	85	49	85	18	25	10	0	12	5	289
<b>Gulf War</b>	3	3	2	0	0	1	0	0	0	9
<b>East Timor</b>	2	5	17	3	4	2	1	0	0	34
<b>Afghanistan</b>	0	0	0	0	0	0	0	0	0	0
<b>War in Iraq (2003)</b>	2	0	2	0	0	0	0	0	0	4
<b>Other Operations</b>	4	3	6	1	1	0	0	0	0	15
<b>Peacekeeping Forces</b>	23	12	33	11	9	2	0	5	1	96
<b>Serving Member</b>	910	451	1 427	247	363	144	21	61	6	3 630
<b>Not Stated</b>	10	9	11	12	7	3	0	1	0	53
<b>All Wars and Conflicts</b>	3 380	2 264	2 891	732	875	261	31	139	22	10 595

Note: Conflict has been determined using earliest accepted disability conflict. Please see Conflict Groupings note on first page.  
Source: DVA Ad hoc Information System.